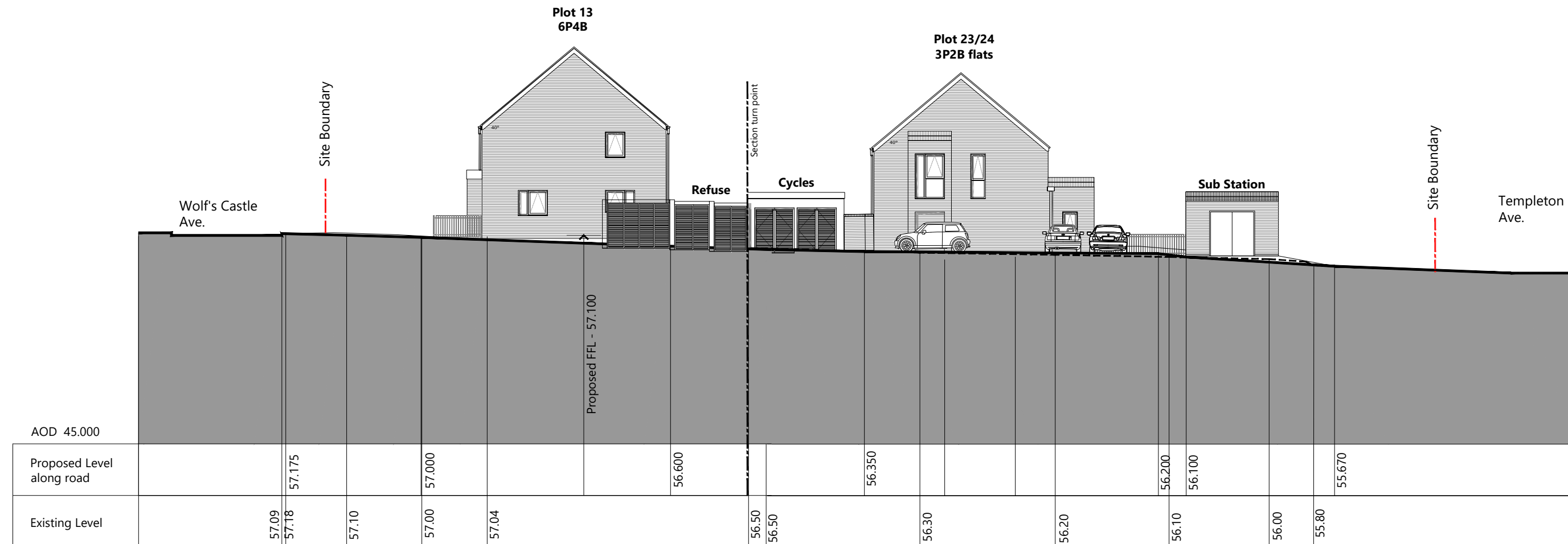
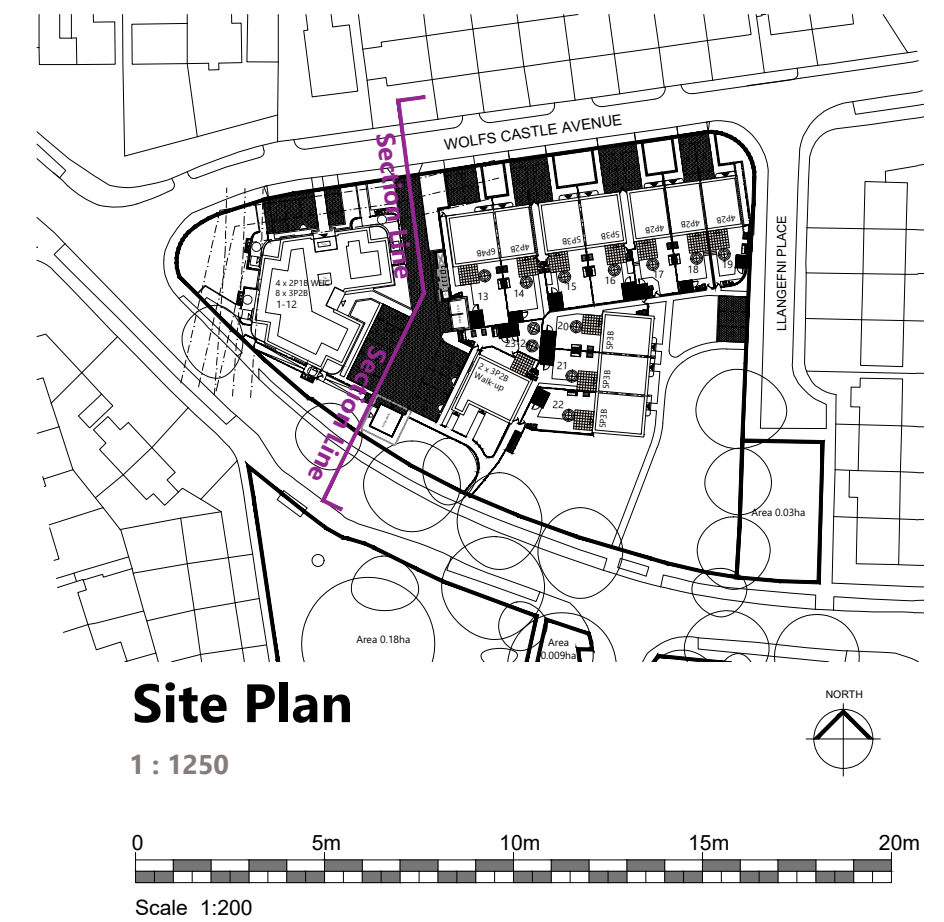


Proposed Site Section :

Wolf's Castle, Llanishen Cardiff County Council




Section 1 - 1 Proposed



This drawing must not be scaled. Figured dimensions and levels to be used. Any inaccuracies must be notified to the architect. Detail drawings and large scale drawings take precedence over smaller drawings.	Rev:		Rev:		Rev:	
	A	Updated in line with present site layout & Engineers Levels	art 06.01.26	-		
THIS DRAWING IS COPYRIGHT ©						

PRELIMINARY	✓
PLANNING	
DESIGN	
TENDER	
CONSTRUCTION	

 <p>powelldobson ARCHITECTS</p>	Drawing No.		Rev.
	24040 (05) 124		A

Cardiff Office: Suite 1F, Building One, Eastern Business Park, Wern Fawr Lane, Old St Mellons, Cardiff CF3 5EA
 Tel: +44 (0)33 33 201 001 Fax: +44 (0)29 2079 1212 email: cardiff@powelldobson.com

Contract:	Cardiff County Council	Scale:	1:200 @ A2
	Wolf's Castle	Date:	April 25
Title:	Proposed Site Section	Drawn:	art
		Checked:	-