

Ground Floor - Wheelchair Accessible 2P1B Apartments
GIA:

- Floor total: 338.9 m²
- Circulation: 46.9 m²

Total GIA: 966.7 m²



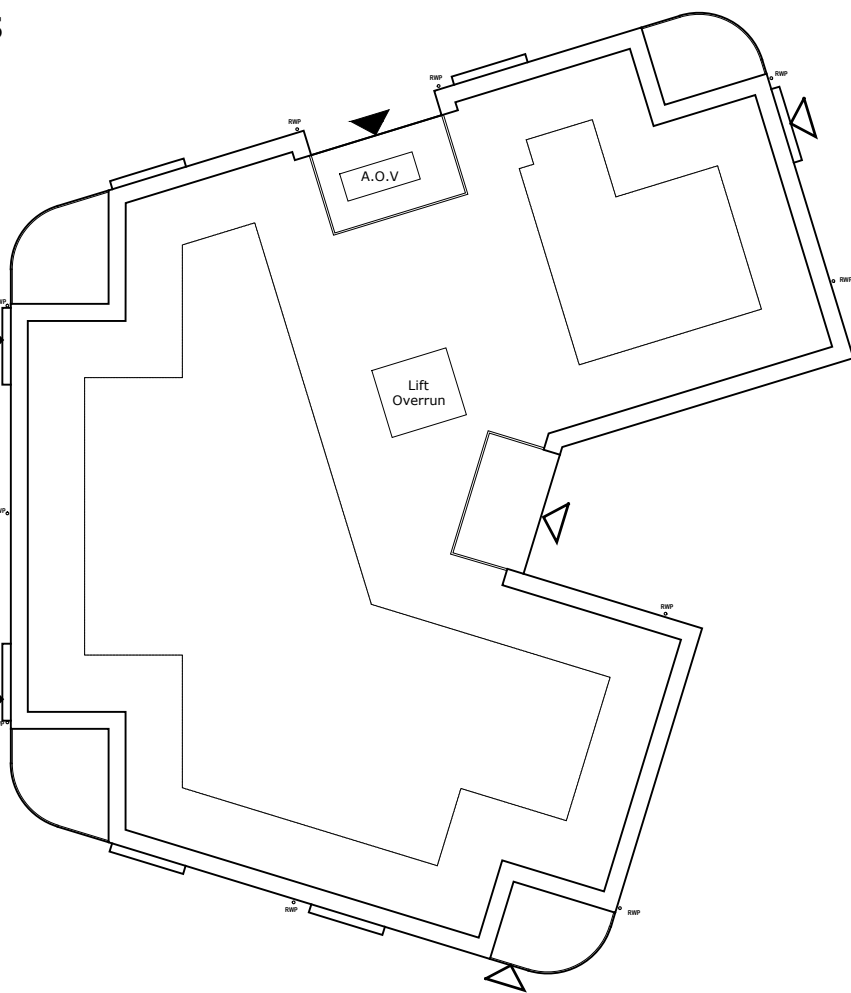
First Floor - General Needs 3P2B Apartments
GIA:

- Floor total: 313.9 m²
- Circulation: 43.7 m²

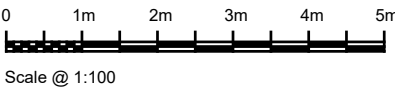


Second Floor - General Needs 3P2B Apartments
GIA:

- Floor total: 313.9 m²
- Circulation: 43.7 m²



Roof Plan



Figured dimensions and levels to be used.
Any inaccuracies must be notified to the architect.
Detail drawings and large scale drawings take precedence over smaller drawings.

Rev:	
A	GIA added. TP 02.06.2025
B	Columns below inset balconies added to GF apartments. GF kitchens reviewed. AJC 07.11.25
C	Ground floor apartments revised per compliance/accessibility officer comments. Footprint increased by 3m2 for improved internal layout. General coordination and minor layout amendments on 1F/2F to accommodate GF tweaks. Roof plan updated. Gardens drawn on GF for context. TP 09.12.2025

Chk'd:	Rev:
-	

Chk'd:	Rev:
-	

Chk'd:

PRELIMINARY	✓
PLANNING	
DESIGN	
TENDER	
CONSTRUCTION	

THIS DRAWING IS COPYRIGHT ©

powelldobson
ARCHITECTS

Cardiff Office: Suite 1F, Building One, Eastern Business Park, Wern Fawr Lane, Old St Mellons, Cardiff CF3 5EA
Tel: +44 (0)33 33 201 001 www.powelldobson.com

Contract: Cardiff Partnering 3; CCC and Lovells
Wolf's Castle, Llanishen
Title: Apartment Floor Plans

Drawing No.	Rev.
24040 (05) 116	C
Scale:	1: 100 @ A1
Date:	05/02/2025
Drawn:	TP
Checked:	Checked