



5-year UV Warranty

**DRI-Z** (waterproof)

STANDARD COLOUR RANGE



ALL OUR PRODUCTS ARE  
FULLY RECYCLABLE



Office Tel: +357 26 910 625

Fax: +357 26 423 067

Email: [shadeports.plus@cytanet.com.cy](mailto:shadeports.plus@cytanet.com.cy)



# DRI-Z

## STANDARD COLOUR RANGE

TOP

BOTTOM

Desert Sand



Terracotta



Royal Blue



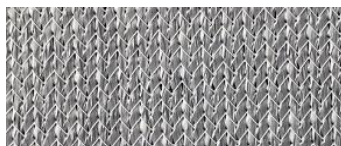
Arizona



Forest Green



Silver



DESIGN - MANUFACTURE - INSTALLATION



## DRI-Z WATERPROOF COVER

PROTECTING ALL YEAR ROUND

WWW.SHADEPORTSPLUS.COM

- Colourshade DRI-Z is a three bar knitted, lockstitch Z pattern, incorporating one monofilament and two type yarns for dimensional stability, tear and fray resistance.
- The Z pattern gives excellent weft and warp stability, due to throw of the weft yarns across the knitting needles during fabrication of the fabric.
- The Z pattern design achieves high density coverage with the weft yarns, giving up to 96% UV block out and exceptional water run off properties.
- The DRI-Z fabric is heat set using a stentering process, giving additional dimensional stability and strength as a result of shrinking and equalizing the yarns lengths and knots in a three bar lockstitch pattern.
- The stentering of the DRI-Z fabric assists in eliminating sagging and looseness in the fabric after installation.

COLOURSHADE DRI-Z	SHADE FACTOR %	UV BLOCK OUT %
Desert Sand	80%	92%
Arizona	84%	92%
Terracotta	84%	90%
Royal Blue	86%	94%
Forest Green	89%	96%
Silver	88%	93%



DESIGN - MANUFACTURE - INSTALLATION



DESIGNED TO PROTECT

WWW.SHADEPORTSPLUS.COM

WE'VE GOT YOU COVERED