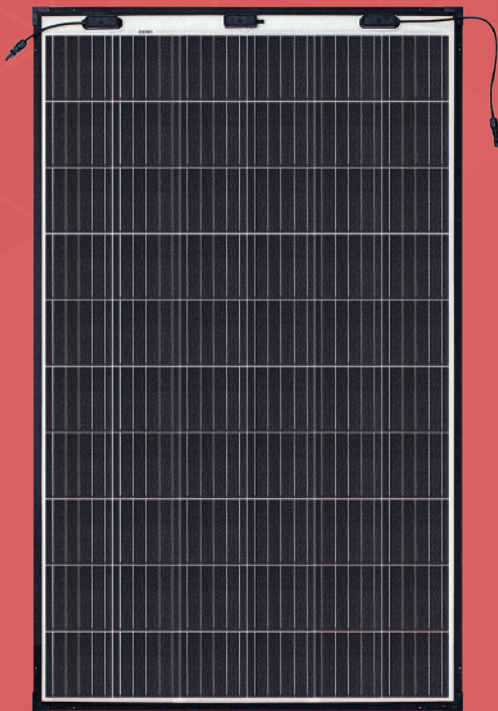


eArc

SMD310M-6X10UW

310 Watt

60 Cell Monocrystalline Module



Ultra-light: Glass free module weighs 6.0 kg, 70% lighter than conventional glass modules.



Fast-Installation: Through "Quick-Bonding" installation, eArc requires no penetration, reduces time on roof by 40% and eliminates the use of mounting hardware.



Aesthetic: Seamless integration with underlying installation surface.



Durable: eArc is the first glassless module to pass the same durability tests as conventional glass modules, including IEC 61215:2016, IEC61730:2016 and UL1703 (USA). eArc has also passed PID, salt mist and ammonia corrosion tests.

POWER OUTPUT RANGE 305~310 W

POWER TOLERANCE 0-5 W

10 Year Product Warranty

25 Year Linear Power Warranty

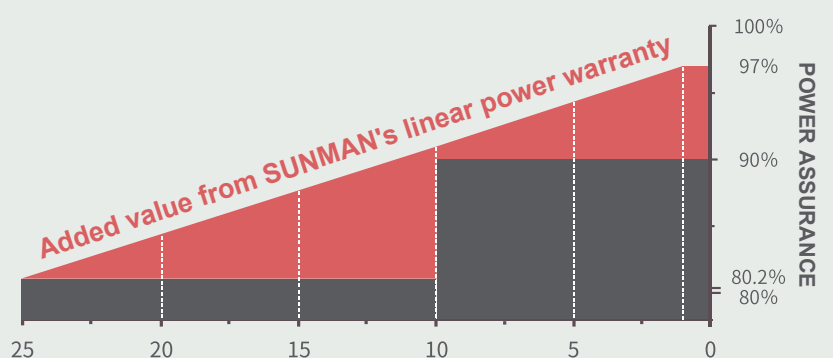


www.sunman-energy.com

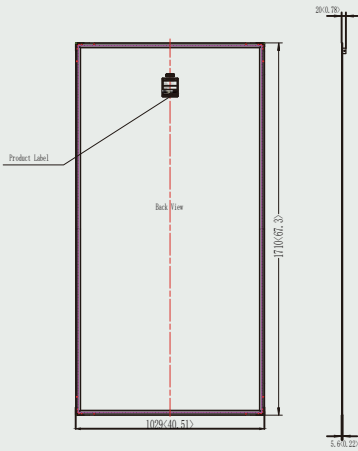
LINEAR PERFORMANCE WARRANTY

CAUTION: Read installation manual before using the product.

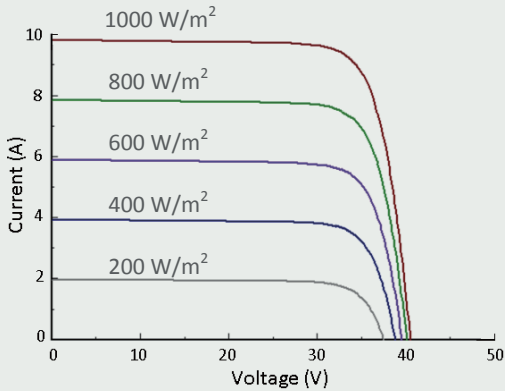
©2020 Sunman (zhenjiang) Co., Ltd. All rights reserved. Specifications included in this datasheet are subject to change without notice.



DIMENSIONS



I-V CURVE (310)



TEMPERATURE CHARACTERISTICS

Nominal Module Operating Temperature(NOMT)	41±2 °C
Temperature Coefficient of P_{max}	-0.38 %/°C
Temperature Coefficient of V_{oc}	-0.28 %/°C
Temperature Coefficient of I_{sc}	0.020 %/°C



SMDUW/IEC EN 2020B

ELECTRICAL CHARACTERISTICS

STC	SMD305M-6X10UW	SMD310M-6X10UW
Maximum Power (P_{max})	305	310
Maximum Power Voltage (V_{mp})	33.0	33.3
Maximum Power Current (I_{mp})	9.25	9.31
Open-circuit Voltage (V_{oc})	40.3	40.5
Short-circuit Current (I_{sc})	9.74	9.81
Module Efficiency (%)	17.3	17.6
Operating Temperature	-40 °C to 85 °C	
Maximum System Voltage	1000 V DC (IEC)	
Maximum Series Fuse Rating	20 A	
Application Class	Class A	
Power Tolerance	0/+5 W	

STC: Irradiance 1000W/m², Cell temperature 25°C, AM=1.5. Tolerances of P_{max} , V_{oc} and I_{sc} are within ±5%

NMOT	SMD305M-6X10UW	SMD310M-6X10UW
Maximum Power (P_{max})	229	233
Maximum Power Voltage (V_{mp})	30.5	30.7
Maximum Power Current (I_{mp})	7.51	7.59
Open-circuit Voltage (V_{oc})	37.4	37.6
Short-circuit Current (I_{sc})	7.96	8.04

NMOT: Irradiance 800W/m², Ambient temperature 20°C, AM=1.5, Wind speed 1 m/s.

MECHANICAL CHARACTERISTICS

Solar Cell	Monocrystalline silicon (158.75mm)
No. of Cells	60 (6×10)
Module Dimensions	1710×1029×5.6 mm
Weight	6.0 kg
Backsheet	White
Frame	Black Anodized Aluminium Alloy
J-box	IP 68 rated
Output Cables	Photovoltaic technology cable 4.0 mm 2, (+)150 / (-)450 mm
Connector	MC4 compatible

PACKAGING CONFIGURATION

	20' GP	40' HC
Module per pallet	30+50	50
Pieces per container	480	1200