

A faint, light gray map of North America, including Canada and the United States, serves as a background for the slide. The map is centered and covers most of the right half of the image.

BOUNTY GOLD CORP & LAST RESORT RESOURCES

2025 Critical Mineral Portfolio - Ontario

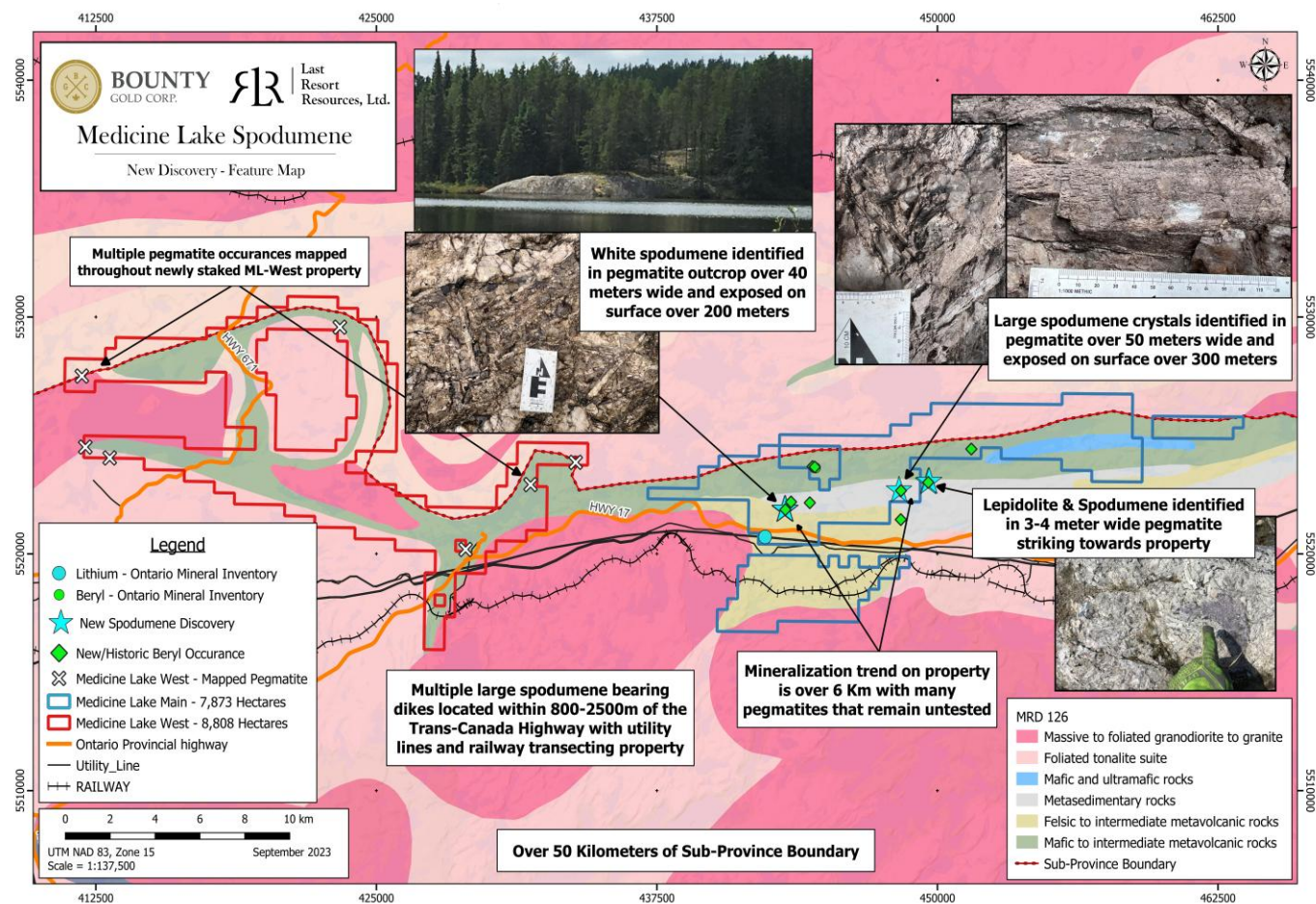
EXPLORATION SUCCESS

- 2022-23 Discovery of multiple 1-5 meter wide Spodumene Bearing Pegmatites over >1-Kilometer trend at Ear Falls
- 2023-24 Discovery of two 30+ meter wide Spodumene Bearing Pegmatites at Victory Project across a 6.5 Kilometer trend.
Winner of 2023 NWOPA Discovery of the Year Award.
- 2024 Discovery of 14 Spodumene Bearing Pegmatites across a 12 kilometer trend at Caron Lake Project.
Winner of 2024 NWOPA Discovery of the Year Award
- Several projects currently being advanced by industry leaders; Kenorland Minerals, Barrick Gold Corp, Libra Lithium & Kobold Metals, Saga Metals & Rio Tinto.

2025 PORTFOLIO SUMMARY

- Over 50,000 Hectares
- Multicommodity Potential – Targeting Critical Minerals
- Strong gold potential at newly staked Forester Lake.
- Projects located proximal to key infrastructure.
- Road accessible for cost effective exploration.
- Approved drilling/stripping permits at Victory.
- 3 projects with approved drilling permits.

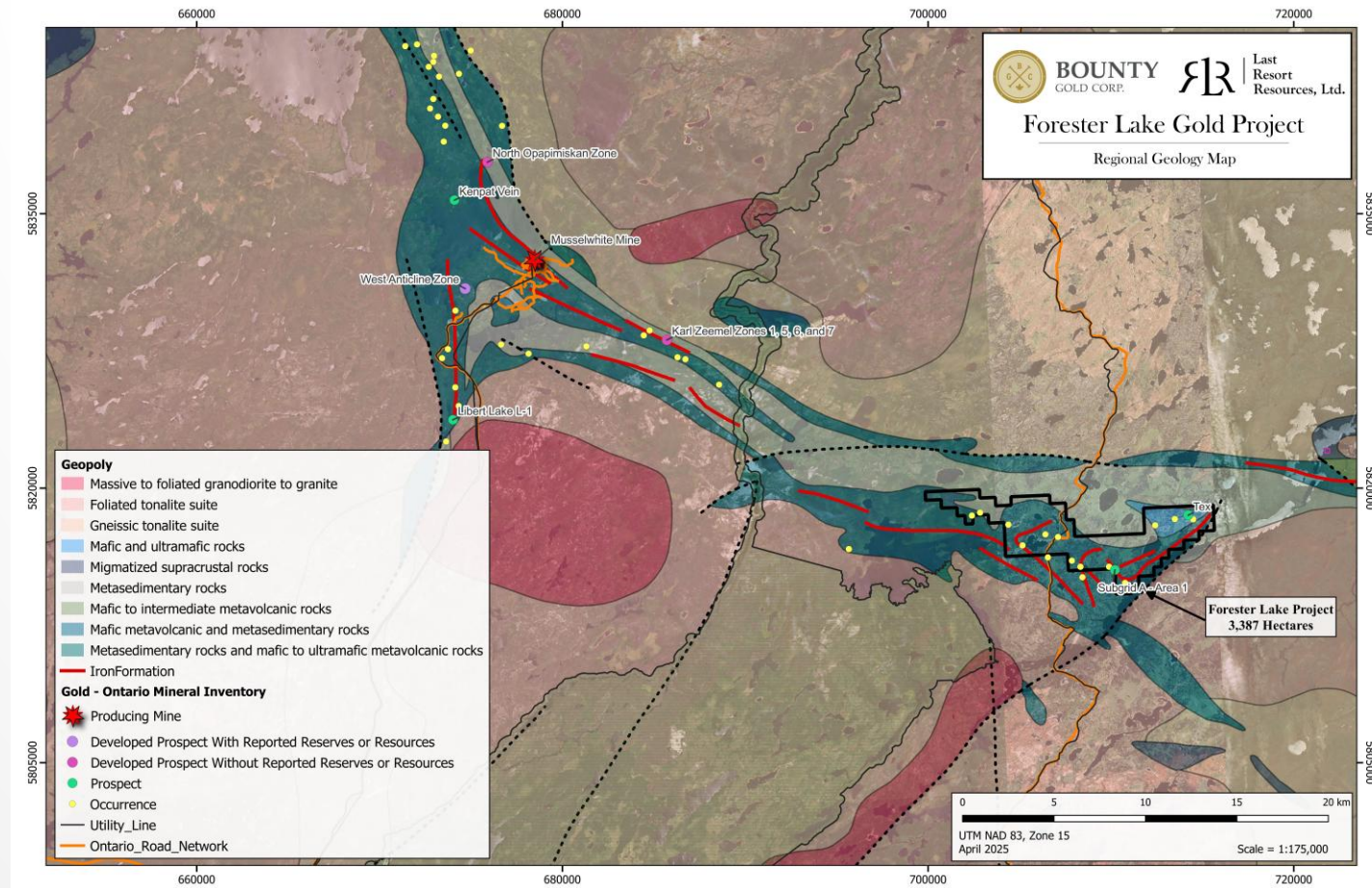
VICTORY PROJECT



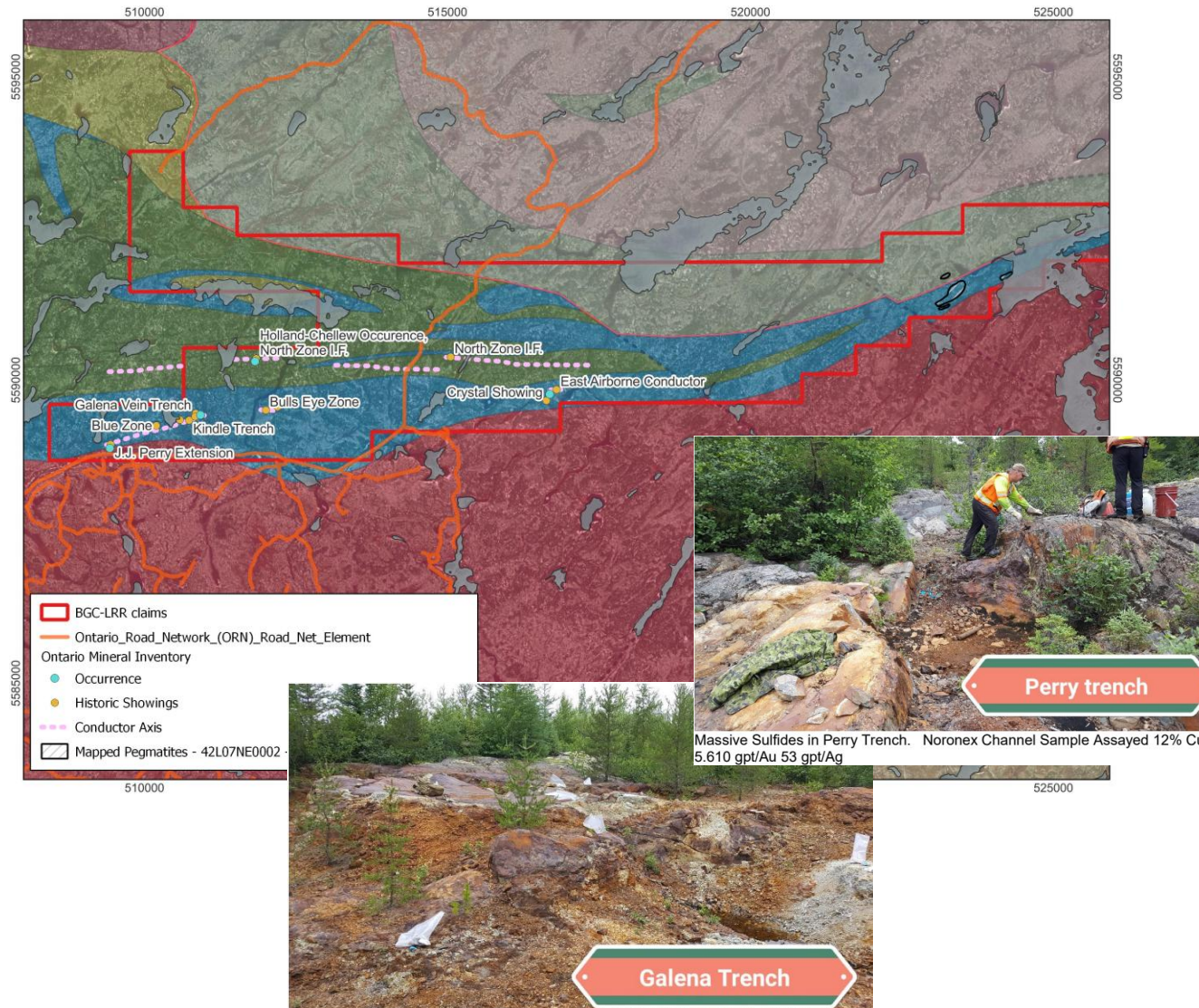
- 16,680 Hectares Proximal to Critical Infrastructure
- Multiple Occurrences of Base Metals and Uranium in Project Area
- Two Large Spodumene Pegmatites discovered within 800m & 2Km from Trans-Canada Highway.
- Lithium up to 5.11% Li₂O
 Cesium up to 468 ppm Tantalum up to 191 ppm
 Rubidium up to 9,698 ppm
 Gallium up to 385 ppm
- Fully Permitted for Drilling & Stripping
- K/Rb ratios as low 9 from bulk rock samples from pegmatite located 6.5 km east of known spodumene dykes. Mapped up to 130 meters wide and 700 meters long. Confirming spodumene here will double known mineralization trend to 13km.

FORESTER LAKE

- District-scale 3,300 ha property with powerline and seasonal road access, located just 35 km southeast of the producing Musselwhite Gold Mine.
- Two distinct gold systems identified: Musselwhite-style mineralization in folded iron formation, and intrusive-hosted gold in shear zones cutting gabbro and quartz diorite.
- High-grade gold values confirmed from both systems: 7.67 g/t Au over 2.85 m (2013 drilling), 3.89 g/t Au over 4.66 m (historic hole TN-86-02).
- Multiple grab samples from different areas have yielded spectacular grades from **118.63 g/t Au** up to **186.74 g/t Au**.
- Modern geophysics and historic compilation define multiple untested fold hinges and shear intersections, offering strong discovery potential across underexplored structural corridors.



MURIEL-MARR LAKE

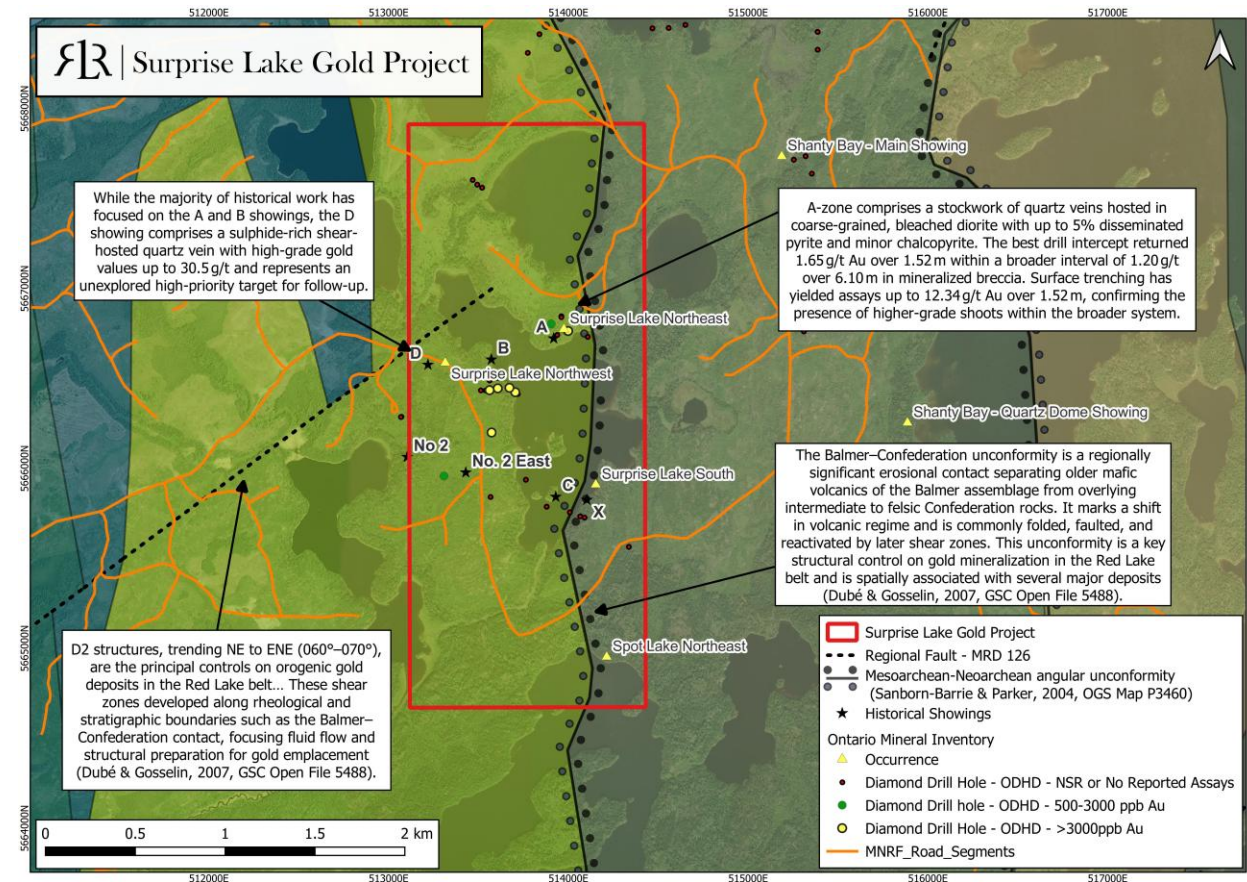
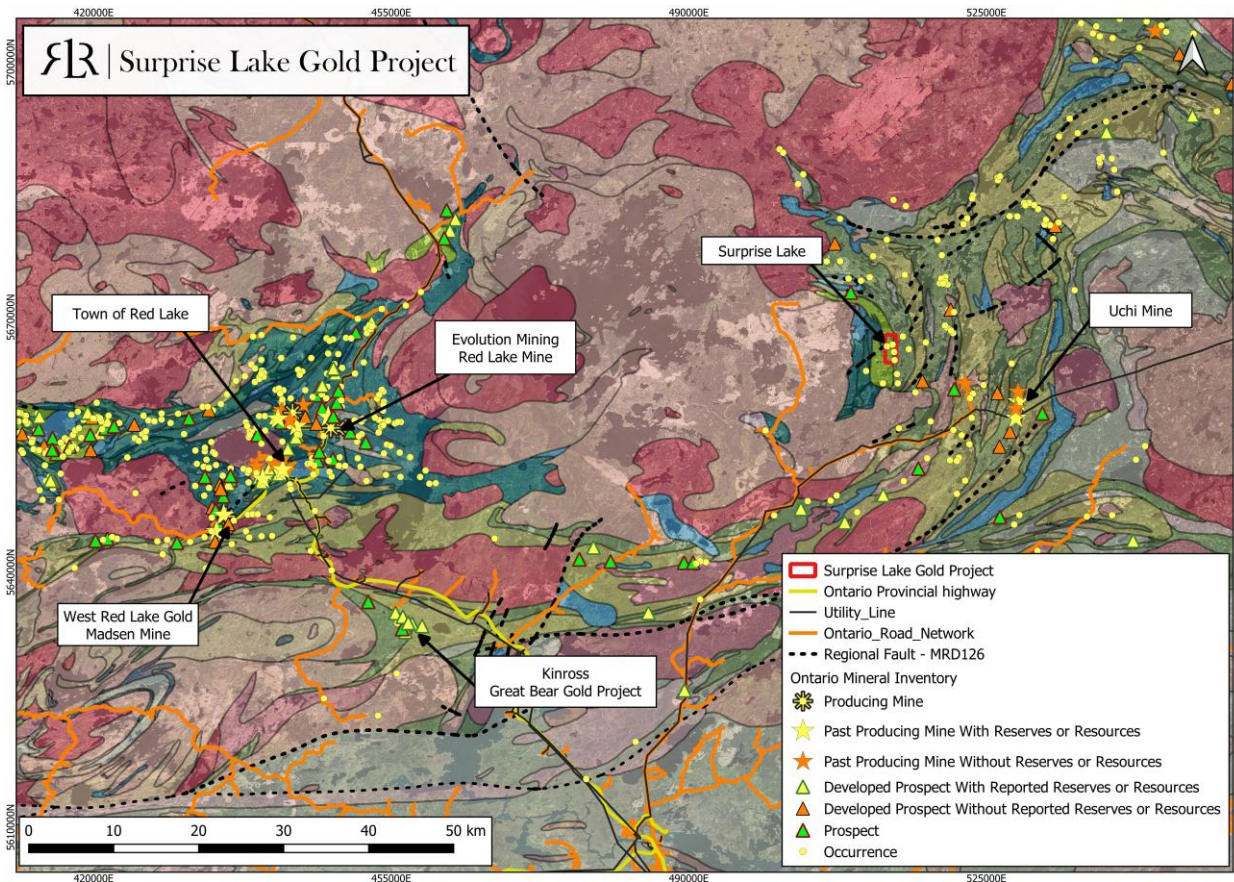


- 8,000+ Hectares covering >20 Kilometers of Subprovince Boundary
- 4 Historical Cu-Zn-Ag-Au Occurrences with Multiple EM Conductors across 6 km.
- Multicommodity potential with assays as high as 12% Cu, 5.8% Zn, 1540 g/t Ag, & 5.6 g/t Au.
- Large Tourmaline Bearing Pegmatites with LCT potential mapped up to 600m in length and 200m Wide.

SURPRISE LAKE

- Good road access, 45 Km East of Red Lake.
- Significant structural setting. D2 structures intersecting regional unconformity.

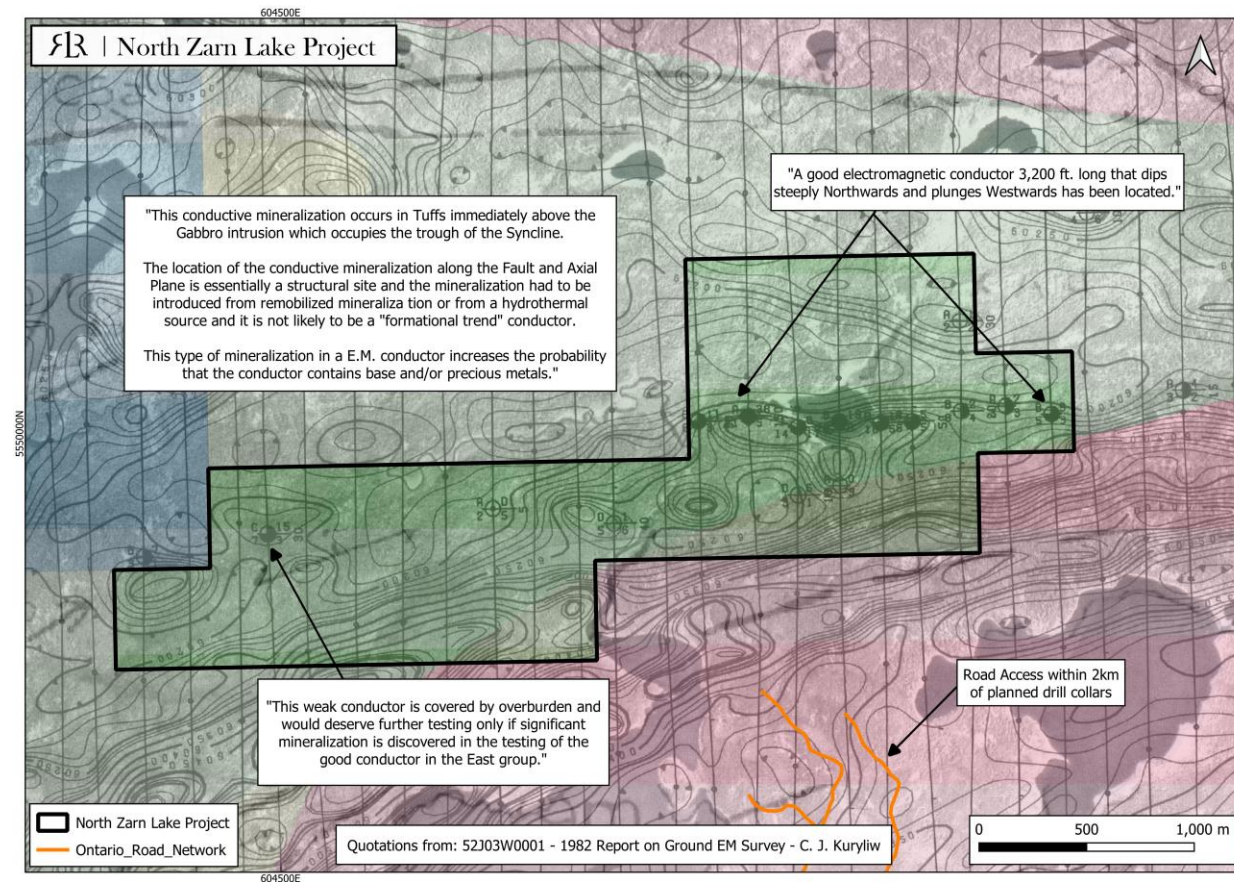
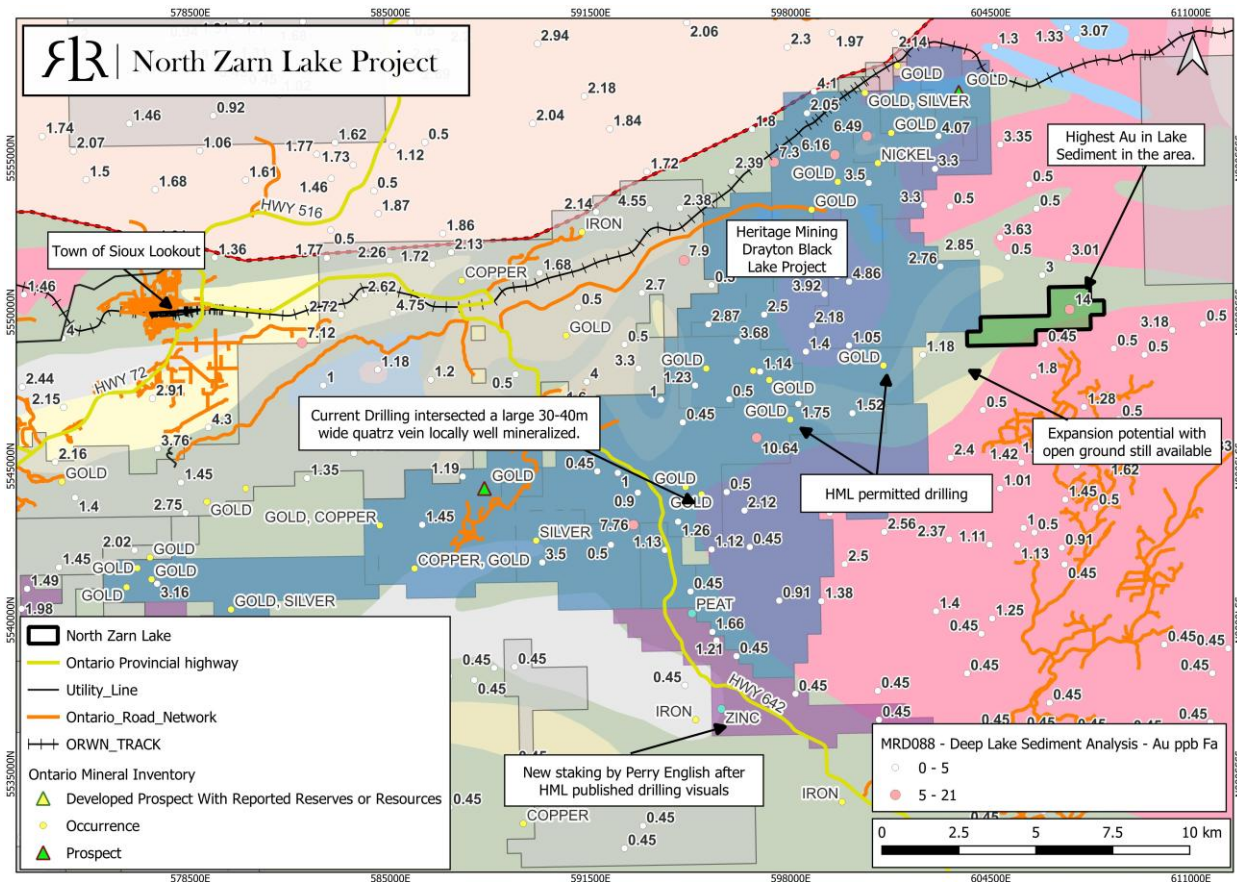
- Meaningful gold mineralization documented in multiple showings across property.
- Immediate target for follow-up includes, Quartz filled shear grading .89 oz/ton.



NORTH ZARN LAKE

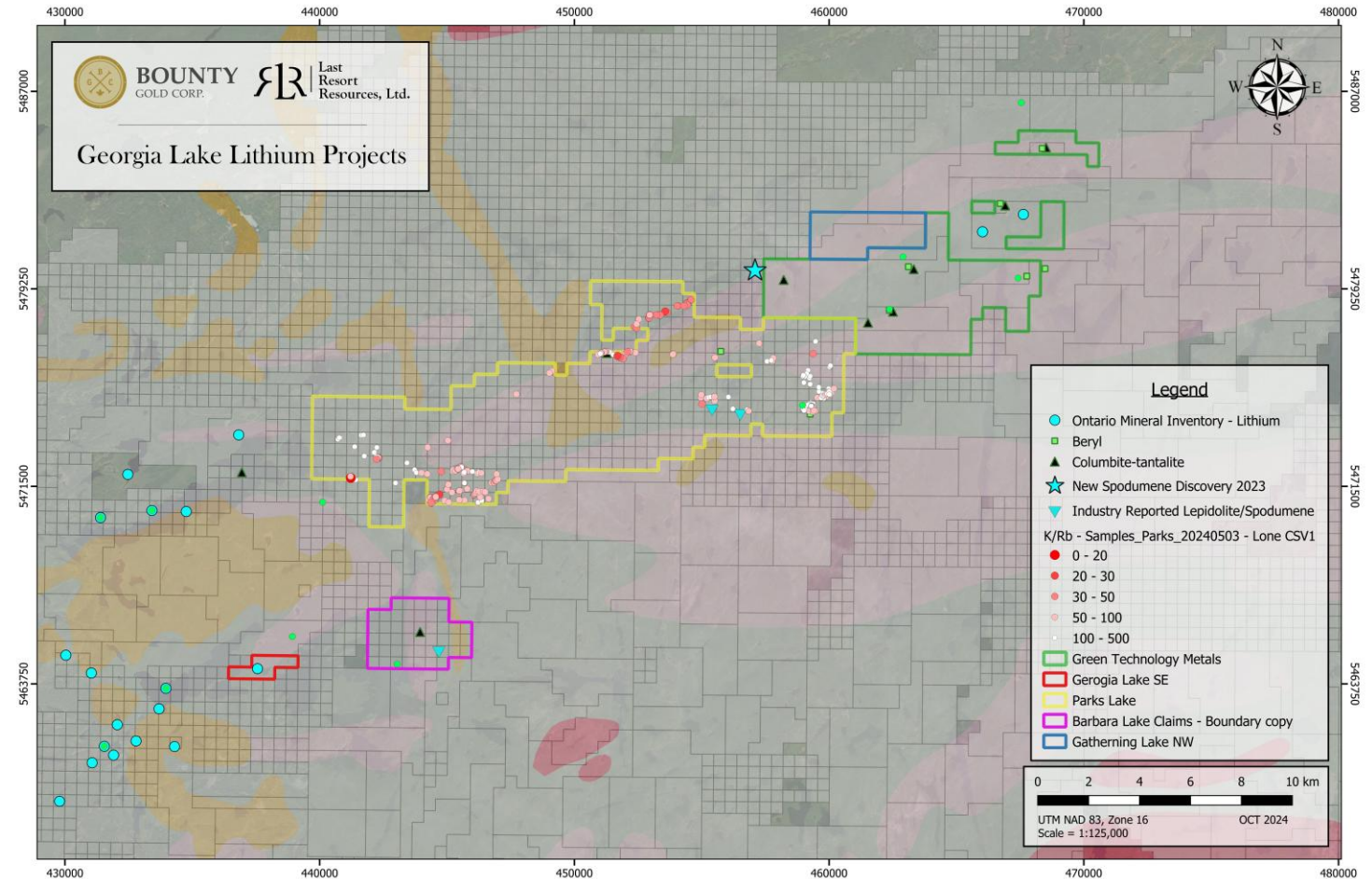
- 35 Km East of the town of Sioux Lookout.
- Contiguous with Heritage Mining Drayton Black Lake where current drilling has intersected a 30-40m wide sulfide quartz vein.

- "The structural environment of the conductor indicates the mineralization was introduced from remobilized minerals or from a hydrothermal source. This type of mineralization increases the probability of Base and/or precious metals occurring." 52J03SW0001- 1982



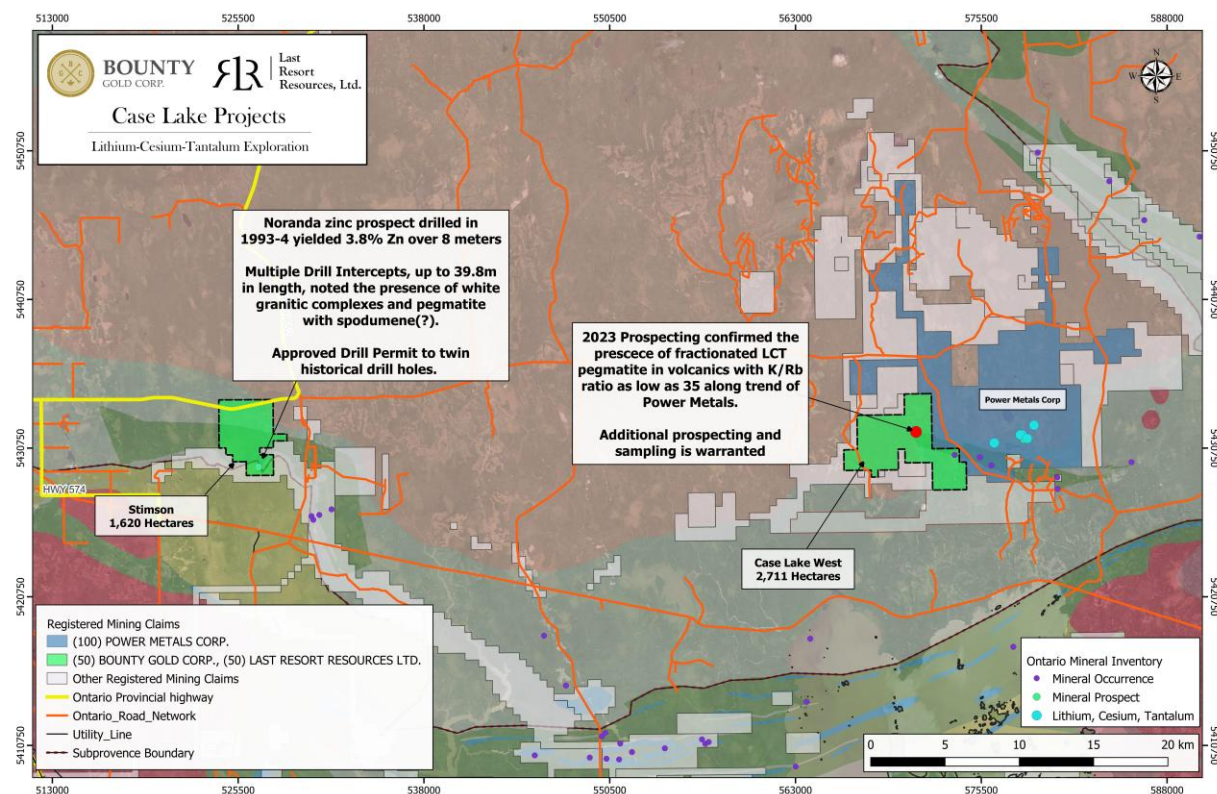
GEORGIA LAKE SE & PARKS LAKE

- Over 10,000 Hectares – District Scale Position
- Confirmed Spodumene Pegmatites estimated 5-10meters wide at G.L.SE. (drill permit pending)
- 2023 Tearlach Discovery within 2km from Parks.
- Multiple Other Reported Occurrences of Beryl, Tantalum, & Lepidolite.

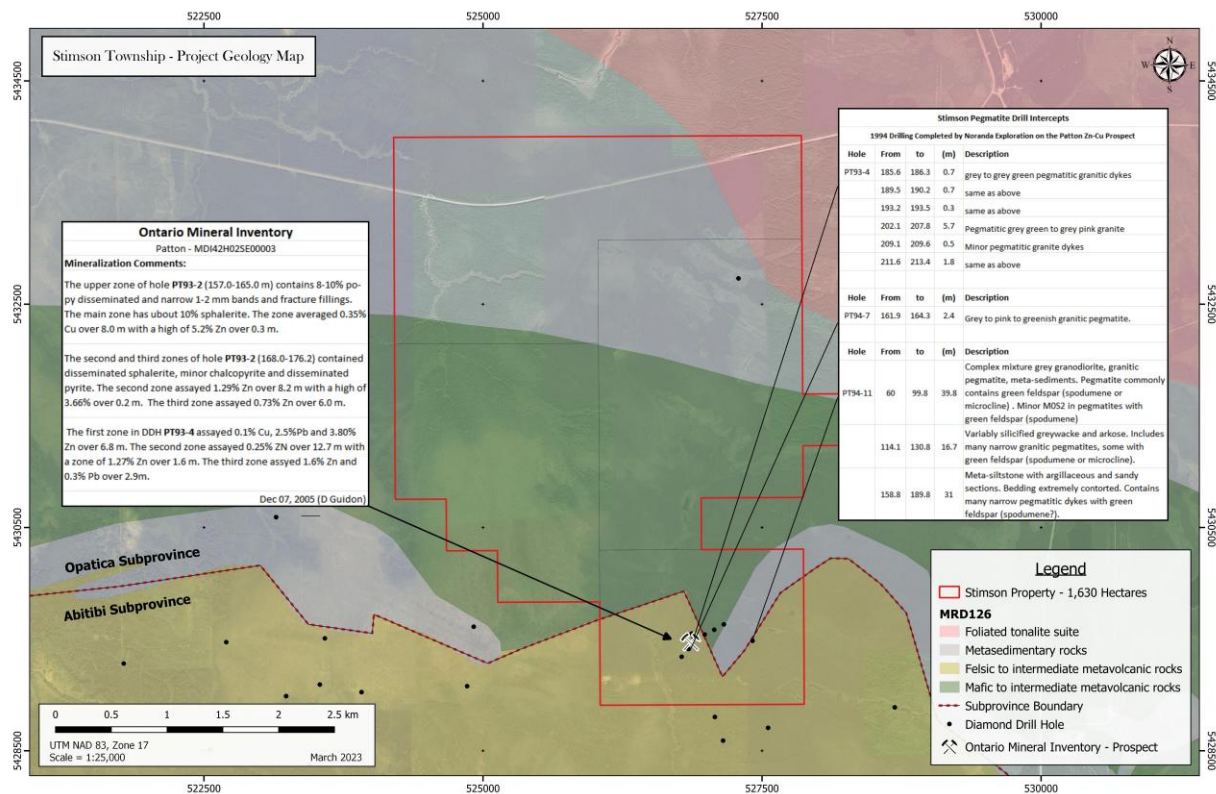


CASE LAKE WEST & STIMSON

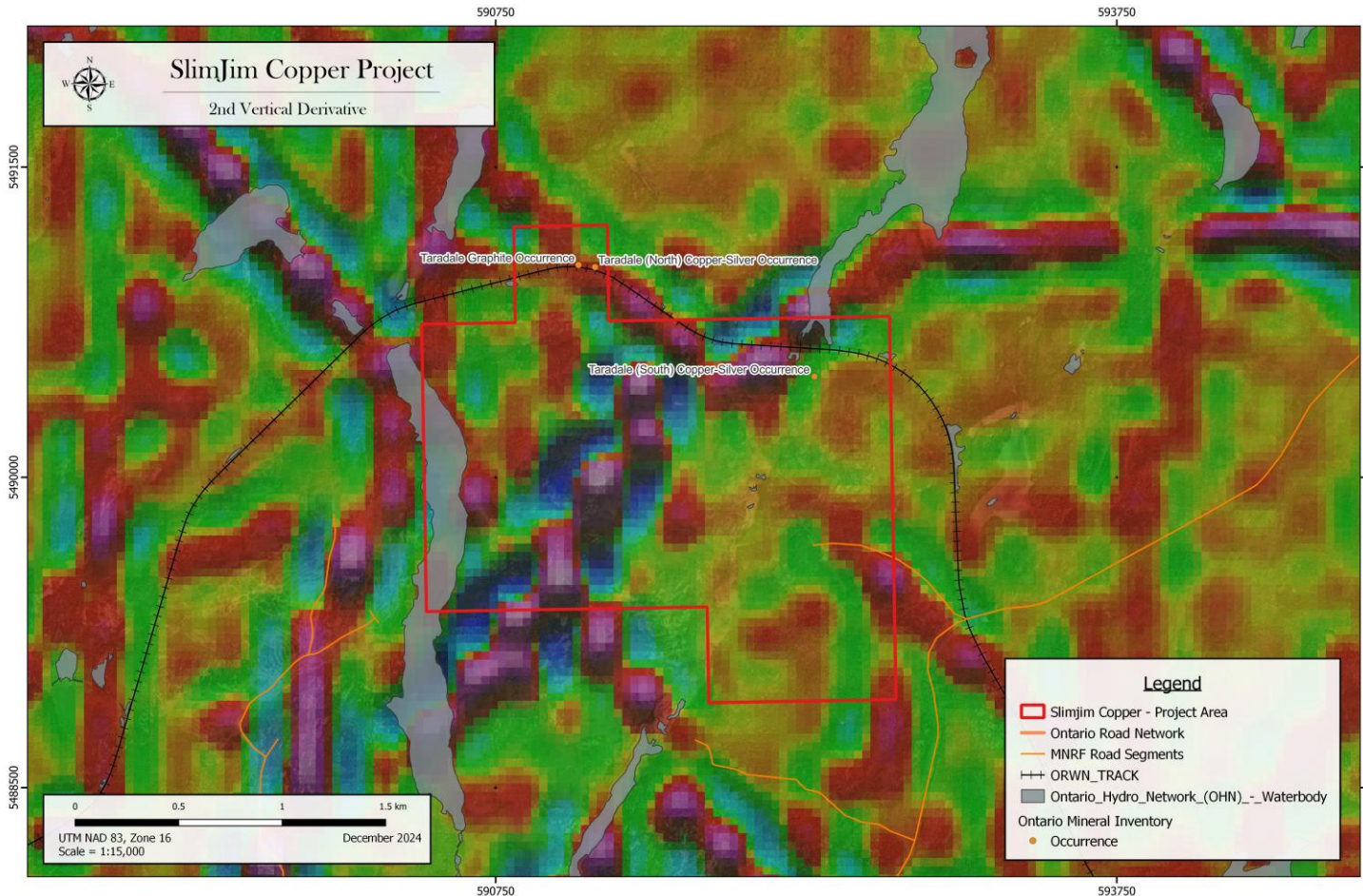
- 1,620 Hectares –Permitted for diamond drilling
- Noranda Zinc prospect drilled in 1993-4.
.1% Cu, 2.5% Pb, 3.8% Zn over 6.8 meters



- Paved highway transects property at Stimson
- Drill Intercepts (up to 39.8m in length) noted the presence of spodumene(?).



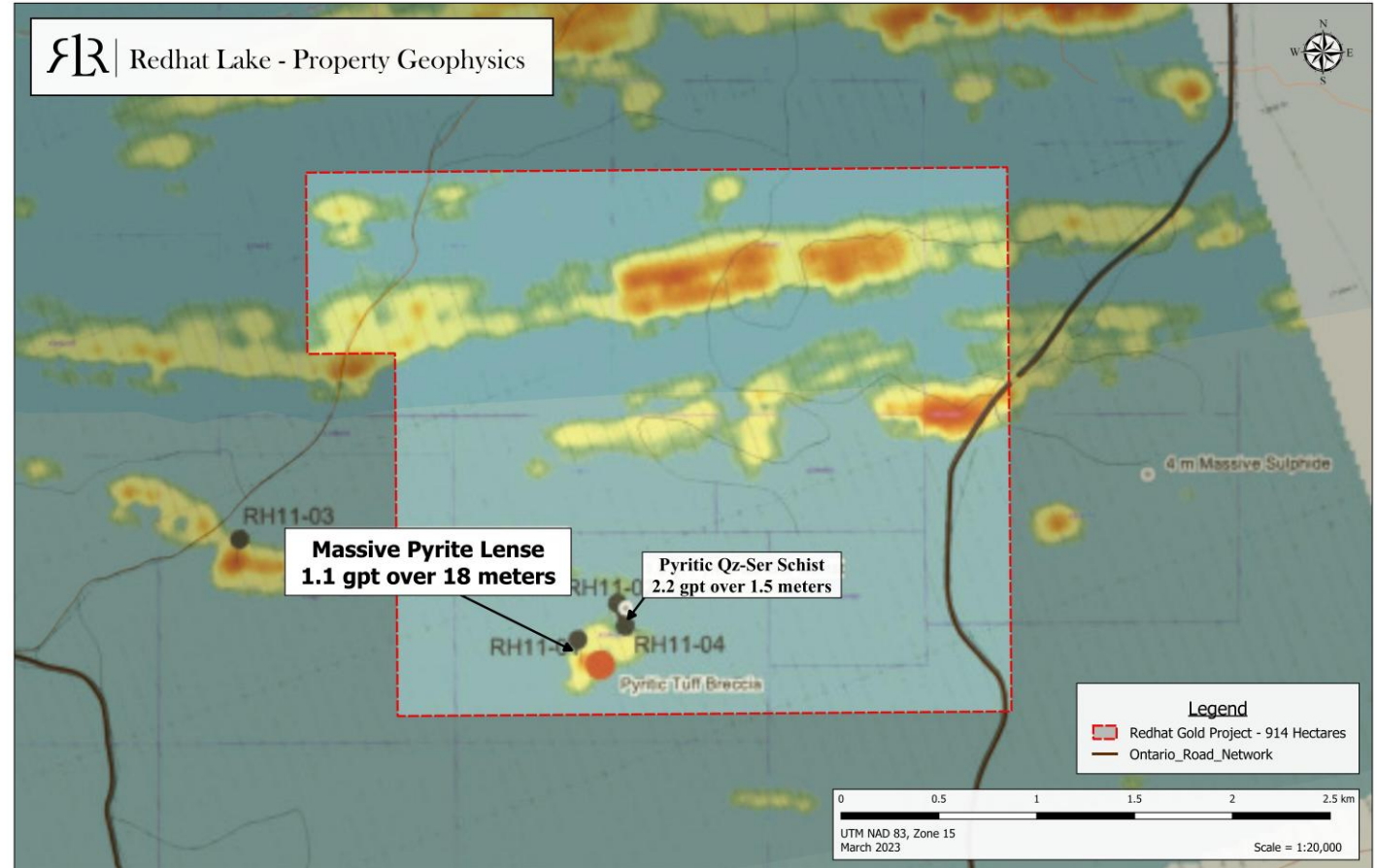
SLIMJIM COPPER-SILVER



- 377 hectares - Fully Permitted for diamond drilling
- Rail line transects property
- Channel samples taken across the width of the mineralized zone in 1971 returned a composite assay of **1.10% Cu** and 0.62 ounce Ag/ton **over 16.5 feet** (Bayne 1971).
- A 20 kg bulk sample collected from the occurrence in 1982 by Noranda is reported to have contained 6.8% Cu and 2.7 ounce Ag/ton (Scott and Maissan 1983).
- Follow up sampling in 2024 by LRR confirmed mineralization trend over 800m with assays of 1.2%-4.46% Cu and up to 79.7 g/t Ag.

REDHAT GOLD

- 900 Hectares – Road accessible
- Multiple Untested Conductors
- 2022 Sampling by LRR returned over 2 g/t Au from new showing.
- Located less than 10 kilometers from NexGold's Goliath Gold Project & contiguous with Canada Critical Resources Ltd



OTHER ONTARIO PROJECTS

- **Rich Lake** - 750 Hectares – Reports of pegmatites up to 70 meters wide with purple tourmaline (a significant fractionation indicator).
- **Solitude Lake** – 3960 Hectares – Multiple pegmatites in meta-volcanics within similar geological setting as Victory Project. 1st pass prospecting located elevated LiBs Values.
- **Ear Falls West** – 2046 Hectares – Along strike of 13 kilometer trend within which multiple spodumene bearing pegmatites have been discovered.
- **Crooked Green Lake** – 364 Hectares – Two Historic Copper showings with assays up to 1.32% Cu.