

BOUNTY GOLD CORP & LAST RESORT RESOURCES

2025 Critical Mineral Portfolio – Ontario



www.LastResortResources.com - Jace Angell - 780.201.3731 – LastResortResourcesLtd@gmail.com

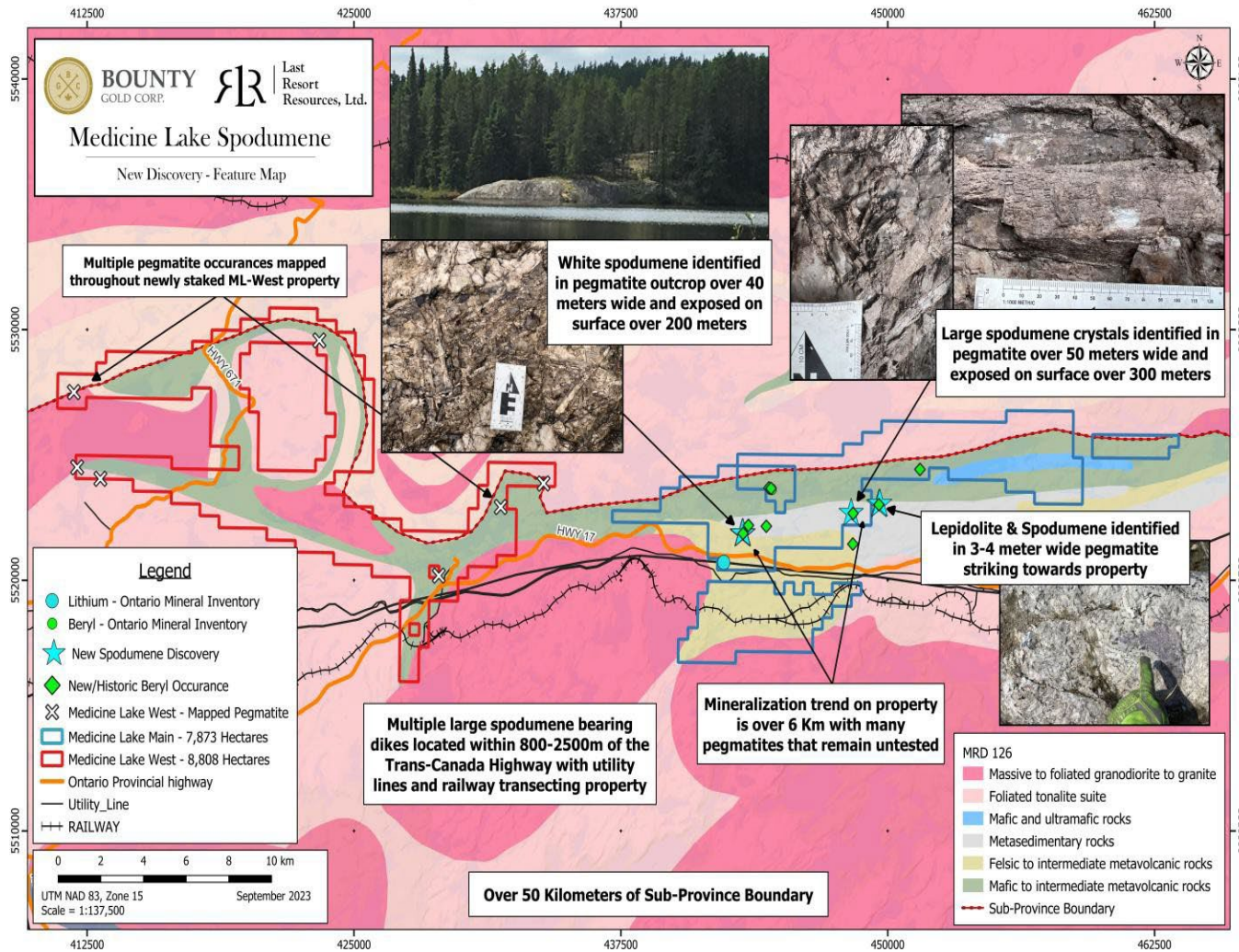
EXPLORATION SUCCESS

- 2022-23 Discovery of multiple 1–5-meter wide Spodumene Bearing Pegmatites over >1-Kilometer trend at Ear Falls
- 2023-24 Discovery of two 30+ meter wide Spodumene Bearing Pegmatites at Victory Project across a 6.5 Kilometer trend. Winner of NWOPA Discovery of the Year Award.
- 2024 Discovery of 14 Spodumene Bearing Pegmatites across a 12-kilometer trend at Caron Lake Project.
- Numerous projects successfully optioned with partners like Kenorland Minerals, Barrick Gold Corp, Libra Lithium & Kobold Metals, Xplore Resources, and Beyond Lithium.

2025 PORTFOLIO SUMMARY

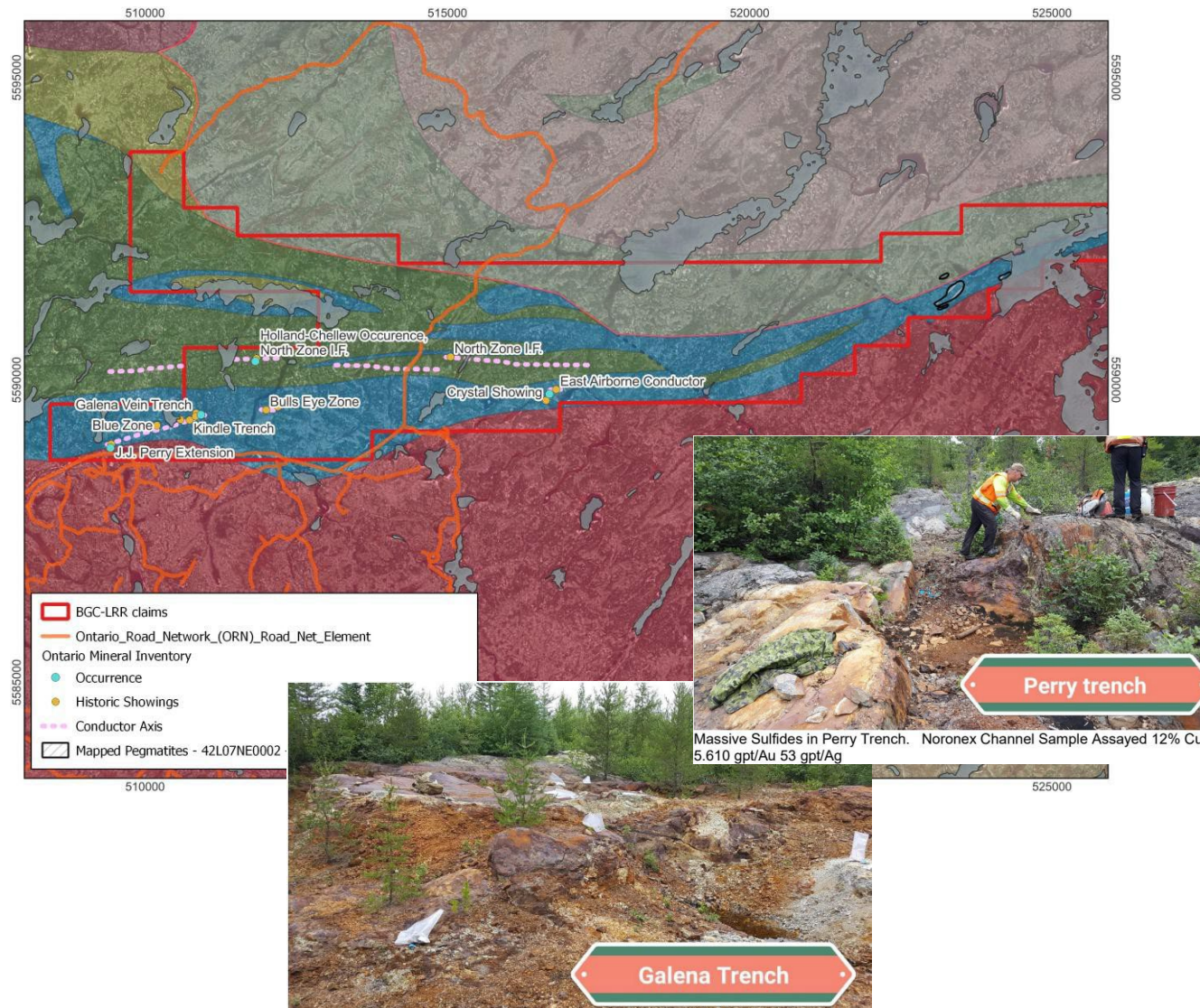
- Over 50,000 Hectares
- Multicommodity Potential – Targeting Critical Minerals
- Projects are located proximal to key infrastructure.
- Road accessible for cost effective exploration.
- Approved drilling/stripping permits at Victory.
- 3 projects with pending permit applications.

VICTORY PROJECT



- 16,680 Hectares Proximal to Critical Infrastructure
- Multiple Occurrences of Base Metals and Uranium in Project Area
- Two Large Spodumene Pegmatites discovered within 800m & 2Km from Trans-Canada Highway.
- Lithium up to 5.11% Li₂O
Cesium up to 468 ppm
Tantalum up to 191 ppm
Rubidium up to 9,698 ppm
Gallium up to 385 ppm
- Fully Permitted for Drilling & Stripping

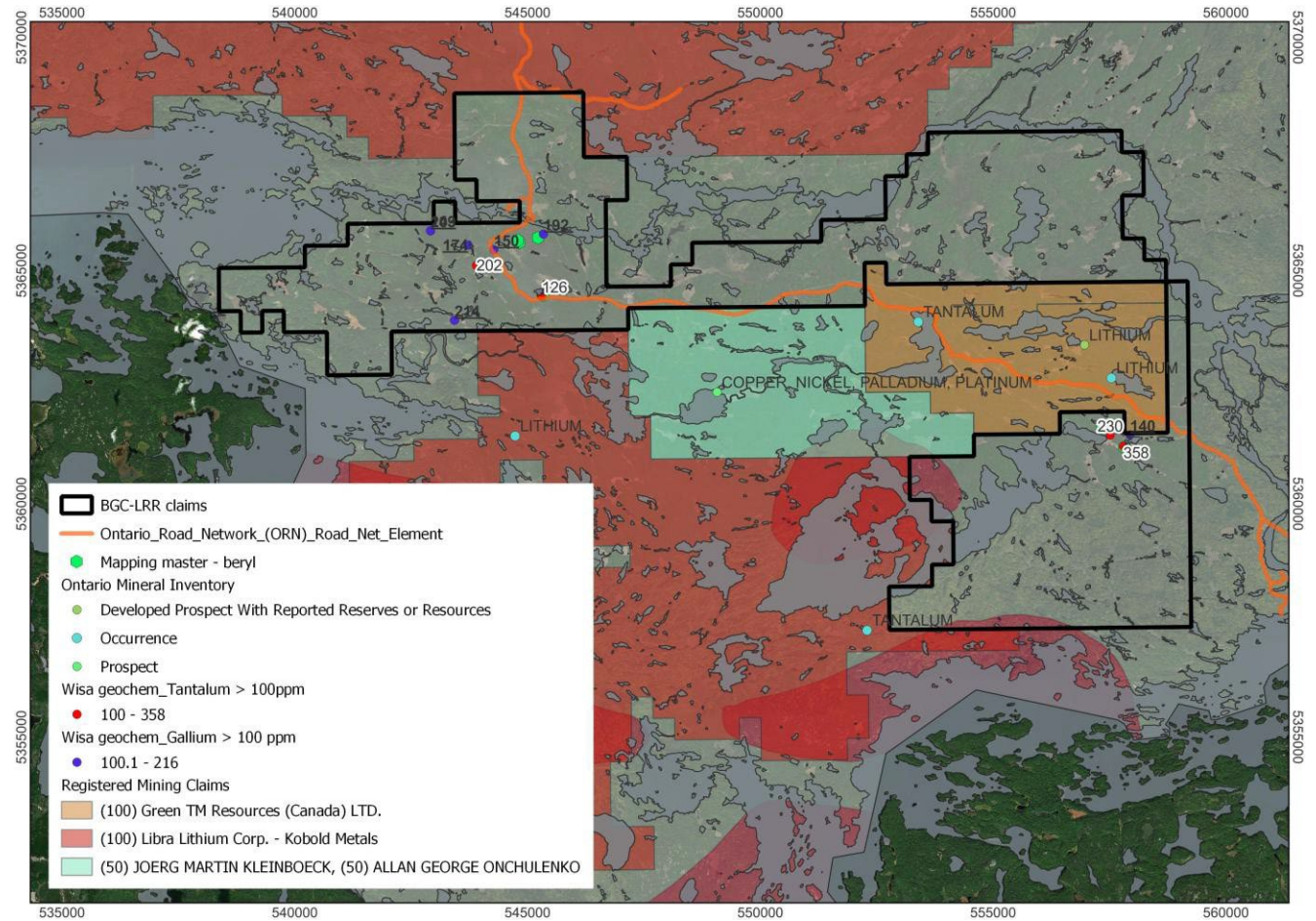
MURIEL-MARR LAKE



- 4,050 Hectares covering 18 Kilometers of Sub-province Boundary.
- 4 Historical Cu-Zn-Ag-Au Occurrences with Multiple EM Conductors across 6 km.
- Multicommodity potential with assays as high as 12% Cu, 5.8% Zn, 1540 g/t Ag, & 5.6 g/t Au.
- Large Tourmaline Bearing Pegmatites with LCT potential mapped up to 600m in length and 200m Wide.

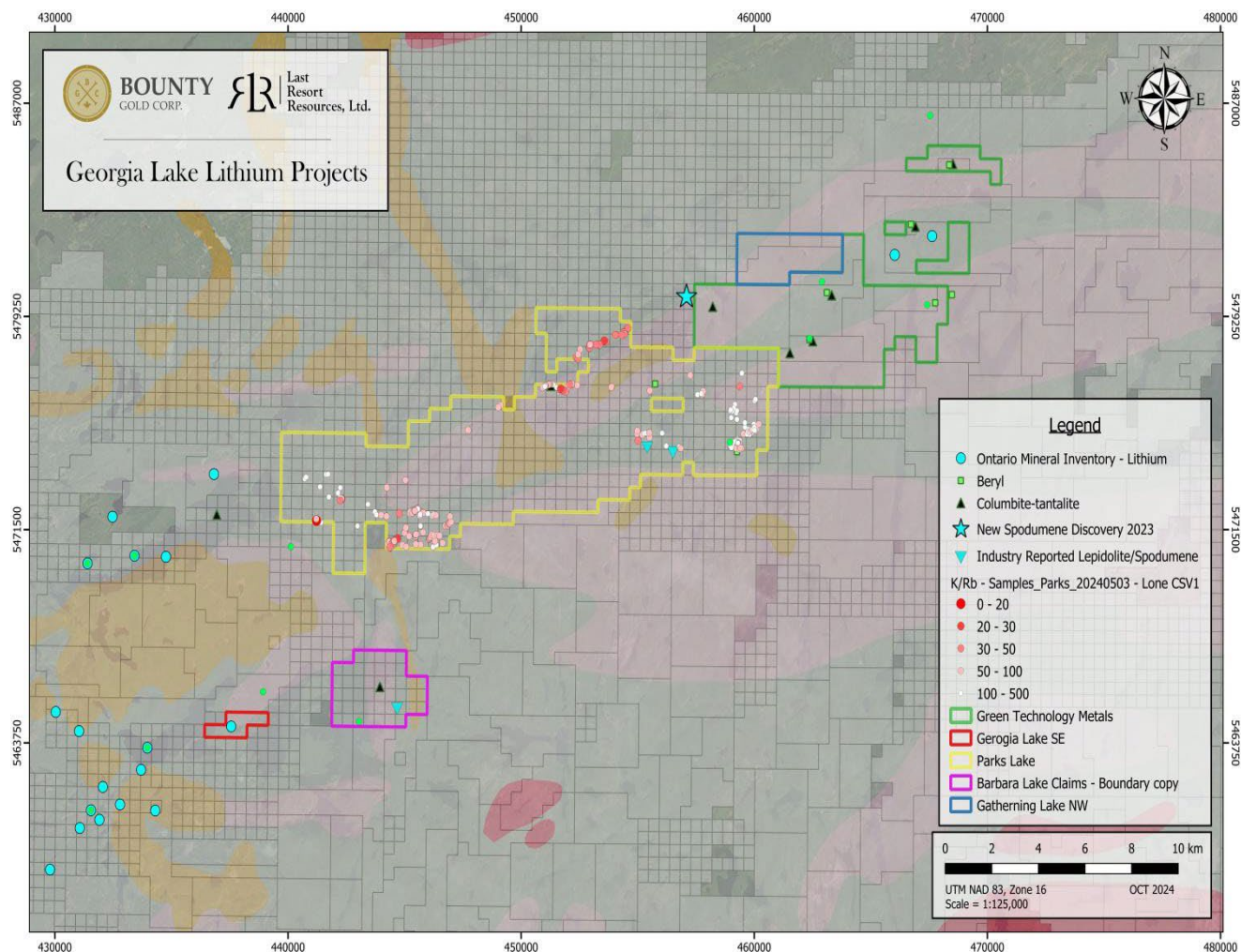
WISA LAKE

- 7600 hectares
- 2023-4 prospecting uncovered multiple Beryl & Tantalum Occurrences.
- 2024 Discovery by Libra Lithium >3km from property.
- Consistently Lower K/Rbs across property. Low of 18.
- Ta values up to 358ppm
- Ga values up to 216ppm

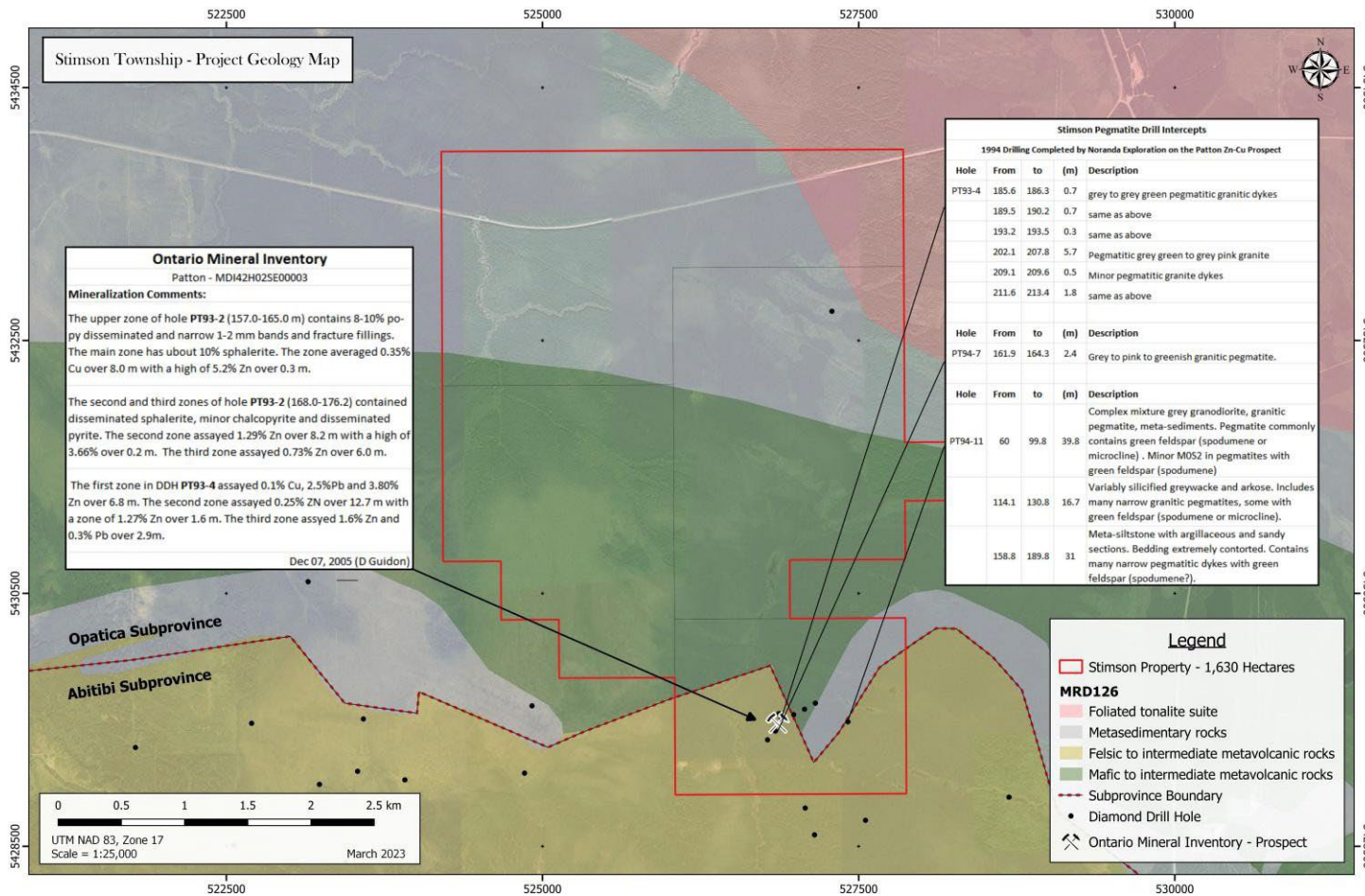


GEORGIA LAKE SE & PARKS LAKE

- Over 10,000 Hectares District Scale Position
- Confirmed Spodumene Pegmatites estimated 5-10meters wide at G.L.SE. (drill permit pending)
- 2023 Tearlach Discovery within 2km from Parks.
- Multiple Other Reported Occurrences of Beryl, Tantalum, & Lepidolite.

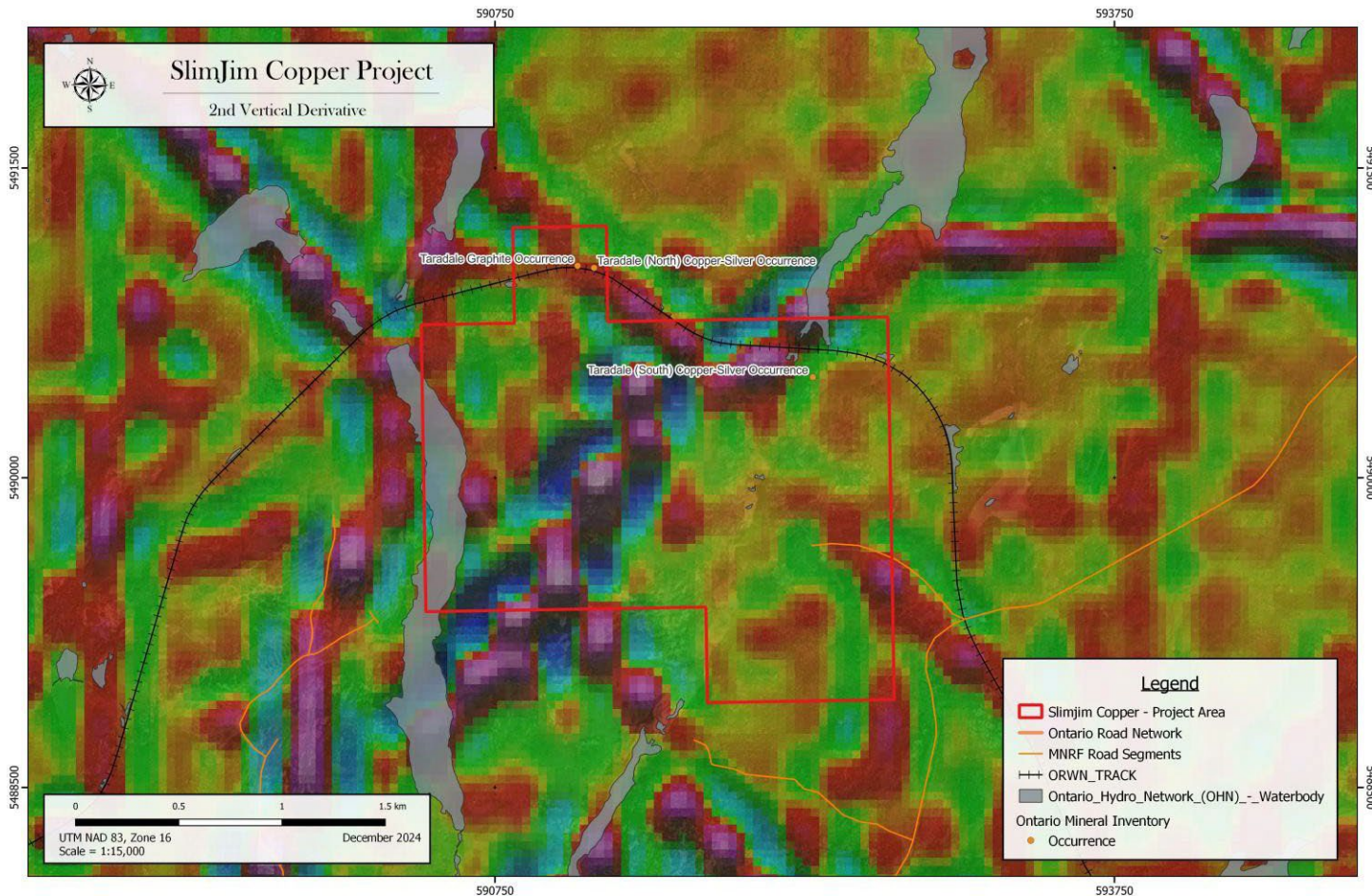


STIMSON



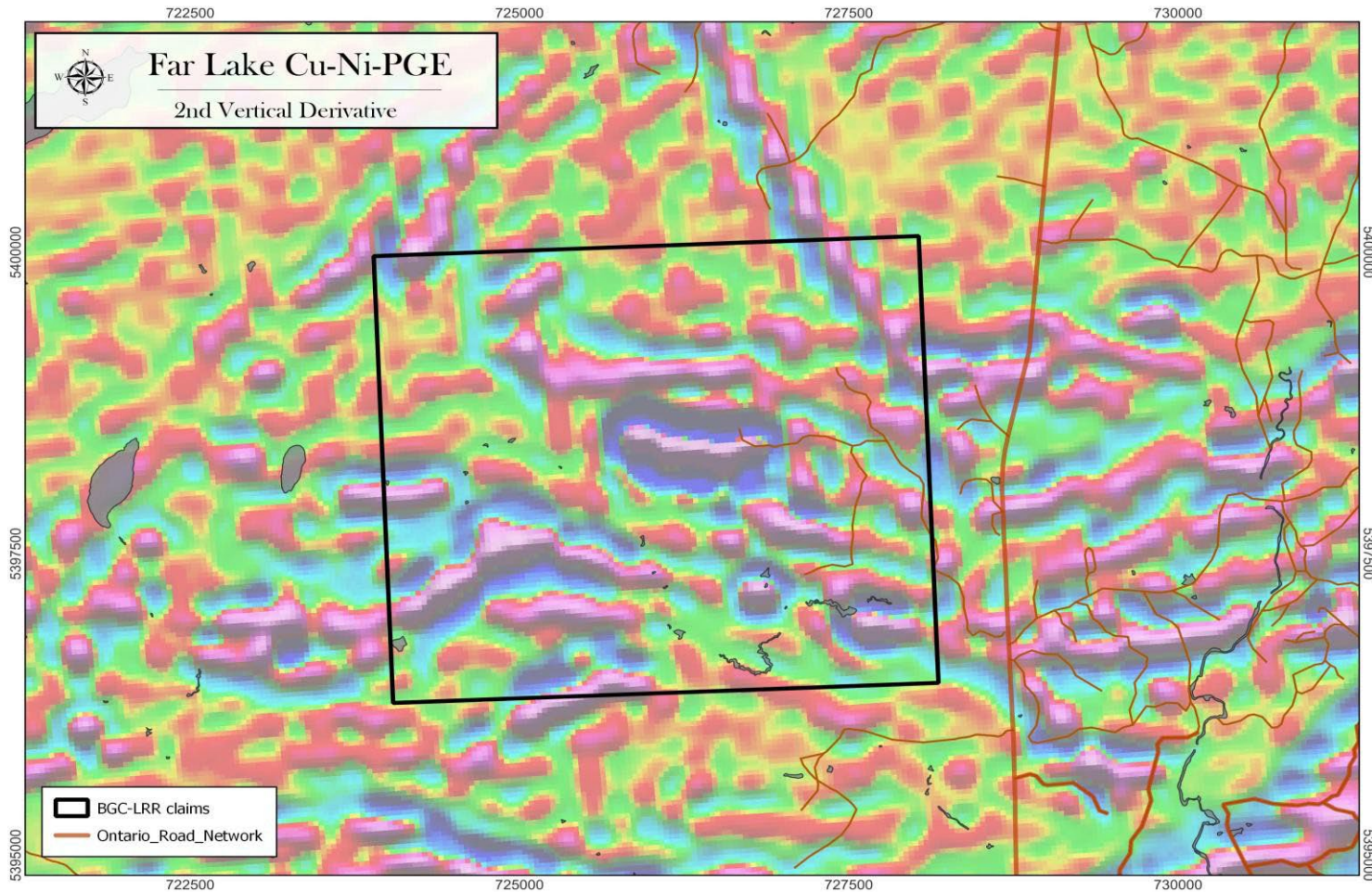
- 1,630 Hectares – Fully Permitted for diamond drilling
- Noranda Zinc prospect drilled in 1993-4. **3.8% Zn over 8 meters**
- Paved highway transects property
- Multiple Drill Intercepts (up to 39.8m in length) noted the presence of “spodumene(?)”
- 45 Km West of PWM Case Lake Cesium Deposit

SLIMJIM COPPER-SILVER



- 377 hectares - Fully Permitted for diamond drilling.
- Rail line transects property.
- Channel samples taken across the width of the mineralized zone in 1971 returned a composite assay of **1.10% Cu** and 0.62 ounce Ag/ton **over 16.5 feet** (Bayne 1971).
- A 20 kg bulk sample collected from the occurrence in 1982 by Noranda is reported to have contained 6.8% Cu and 2.7 ounce Ag/ton (Scott and Maissan 1983).
- Follow up sampling in 2024 by LRR confirmed mineralization trend over 800m with assays of 1.2%- 4.46% Cu and up to 79.7 g/t Ag.

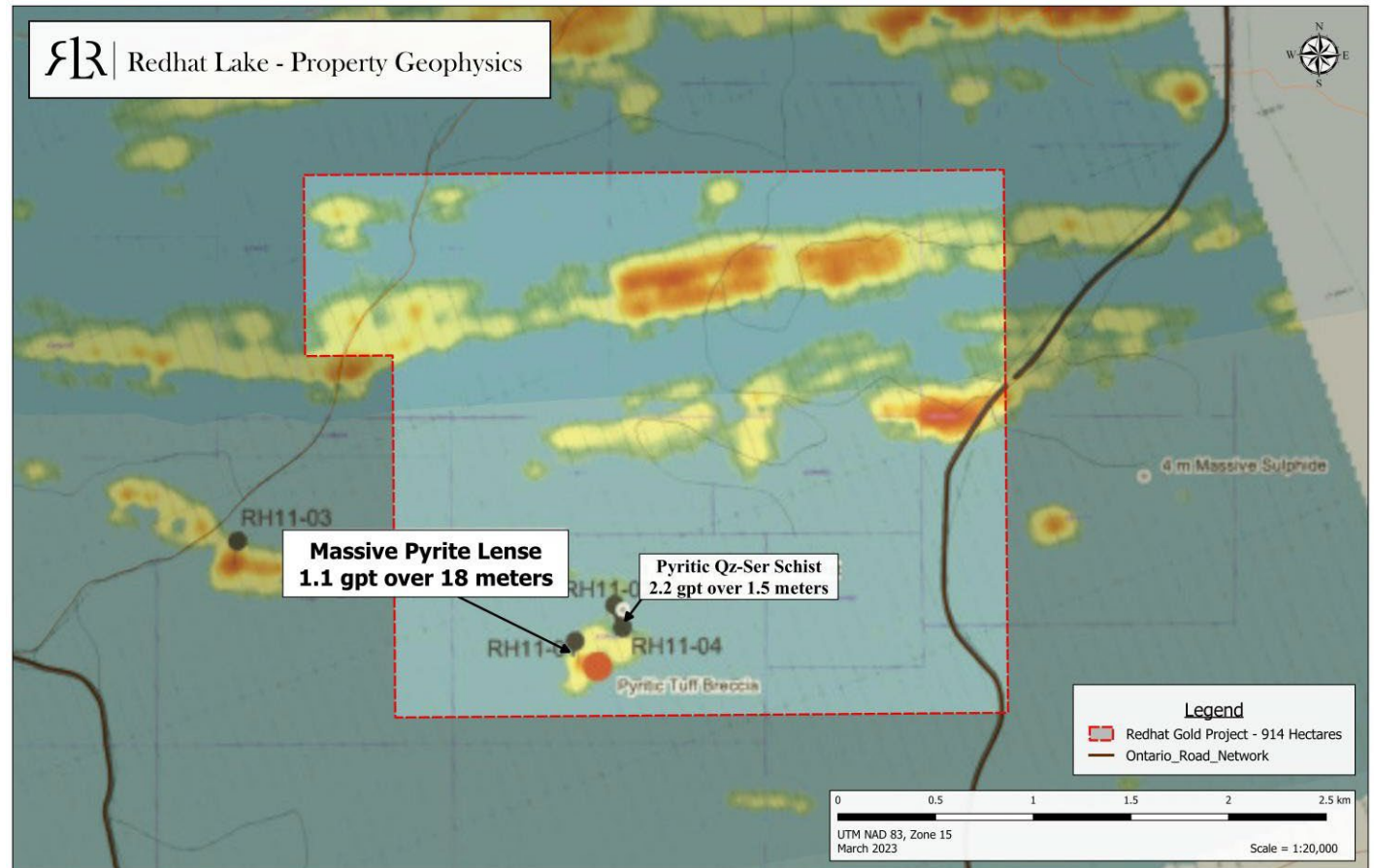
FAR LAKE CU-NI-PGE



- 1535 hectares
- A 2020 Ground magnetic survey confirms the Quectico supergrid survey (Data set 1037) a dipolar feature.
- The results of ground VLF survey shows two east-west VLF trends.
- Prospecting has located med- coarse grained pyroxenite with pyrite and magnetite.
- Native copper observed in nearby angular float.
- Pink& Purple tourmaline noted by OGS in nearby pegmatites provide evidence of added LCT potential.

REDHAT GOLD

- 900 Hectares – Road accessible
- Multiple Untested Conductors
- 2022 Sampling by LRR returned over 2 g/t Au from new showing.
- Located less than 10 kilometers from NexGold's Goliath Gold Project & contiguous with Canada Critical Resources Ltd



OTHER ONTARIO PROJECTS

- **Rich Lake** - 750 Hectares – Reports of pegmatites up to 70 meters wide with purple tourmaline (a significant fractionation indicator).
- **Solitude Lake** – 3960 Hectares – Multiple pegmatites in meta-volcanics within similar geological setting as Victory Project. 1st pass prospecting located elevated LiBs Values.
- **Ear Falls West** – 2046 Hectares – Along strike of 13-kilometer trend within which multiple spodumene bearing pegmatites have been discovered.
- **Crooked Green Lake** – 364 Hectares – Two Historic Copper showings with assays up to 1.32% Cu.