

# Ultraseal

High-Performance Insulated Glass



Superior Insulation  
with a full range of  
variations to suit your  
performance needs

**ULTRASEAL**  
Ultraseal Glass Corp

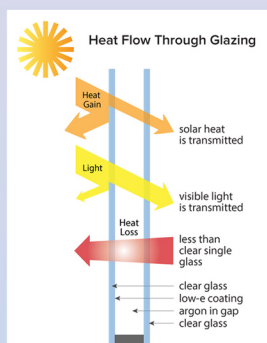
# Ultraseal

## Glass Data

Product		Glass Thickness	Spacer	Transmittance			Reflection			Winter U-Value		SHGC (100% Air)
				Visible	Solar	UV	Out	In	Solar	Air	Argon	
Double IG	Clear / Comfort Select 73 #3	3mm	1/2"	74%	605	44%	17%	16%	17%	0.33	0.29	0.73
	Clear / Comfort Select 63 #3	3mm	1/2"	80%	54%	33%	11%	11%	29%	0.3	0.25	0.62
	Comfort Select 63 #2 / U4	3mm	1/2"	67%	52%	33%	19%	20%	17%	0.26	0.23	0.6
	Comfort Select 73 #2 / U4	3mm	1/2"	72%	47%	25%	14%	15%	28%	0.24	0.2	0.53
Triple IG	Comfort Select 73 #2 / Clear / Clear	3mm	1/2"	68%	52%	36%	21%	22%	19%	0.24	0.21	0.59
	Comfort Select 63 #2 / Clear / Clear	3mm	1/2"	73%	47%	28%	16%	17%	30%	0.22	0.19	0.53

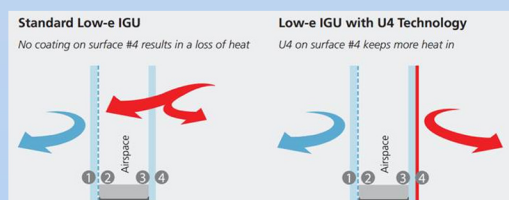
## Ultraseal Glass Benefit:

- Superior Insulation compared to anything single glazed
- Control Solar Heat Gain
- Reduce Heating and Cooling energy Waste
- Reduce Heating and Cooling energy Costs
- Increase the size of your window/door without compromising performance
- Control Visible Light levels / Glare factors
- Ultraviolet (UV) protection against fading factors
- Virtually eliminate Internal Condensation
- Superior Acoustics versus any monolithic option
- High Performance coated LowE options to meet Energy Efficiency demands from Building Codes

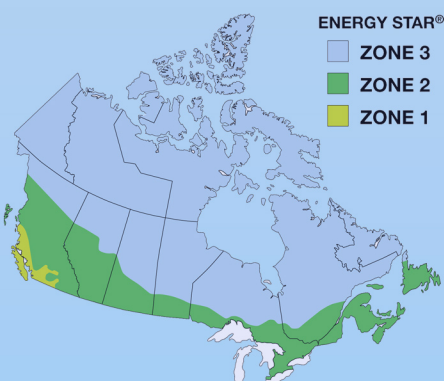


## U4 Technology:

Adding U4-- 4thSurface Technology to your IGUs is a true game-changer. You can improve your total window U-value performance by 0.04 or more, without changing your manufacturing processes.



Now, you will be able to exceed new ENERGY STAR standards and still maintain your competitive edge.



## Options:

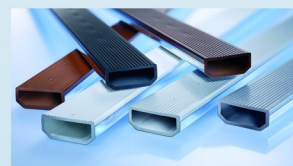
### Glass:

- Standard glass: AGC/Guardian float clear glass and clear LoE glass
- Tempered and laminated glass available



### Spacer:

- Warm edge spacer
- Aluminum spacer
- Color options in stock: Light grey, Black, White
- Special colors available upon request



### Sealant:

- Polysulphide: Adapted to all type of glass
- Hot melt: Adapted for small to medium openings

### Gas fills:

- Argon
- Lower conductivity insulates better than air
- Krypton
- Lowest conductivity of any gas used

### Grille bar:

- Rectangular: 1/4" x 5/8", 1/4" x 5/16"
- Pencil bar
- Georgian bar
- Various color options available



**ULTRASEAL**  
Ultraseal Glass Corp

Add: 88B Ronson Dr., Etobicoke, ON M9W 1B9

Tel: 416-240-1799, 416-247-5687

Fax: 416-244-1582