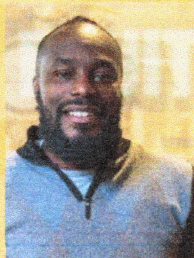


The Learning Tree

The Learning Tree is an association of neighbors that specializes in Asset Based Community Development, learning and education that improves the quality of lives of people, communities, schools and businesses.

De'Amon Harges
Social Banker



Amanda Wolf
Executive Spirit



Wildstyle Paschall
Roving Illustrator



Januarie York
Cultivator of Joy



Institutional readiness for using asset-based community development.

- What are you willing to share/give up?
- Who are you willing to learn from?
- What gifts are you willing to invest in?

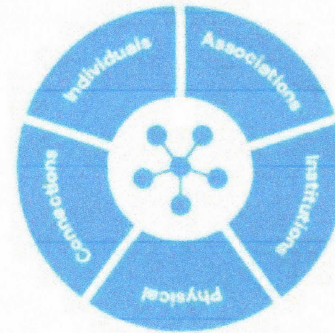
What is Asset Based Community Development?

Asset Based Community Development (ABCD) is a strategy for sustainable community-driven development.

Beyond the mobilization of a particular community, ABCD is concerned with how to link micro-assets to the macroenvironment.

The appeal of ABCD lies in its premise that communities can drive the development process themselves by identifying and mobilizing existing, but often unrecognized assets, and thereby responding to and creating local economic opportunity.

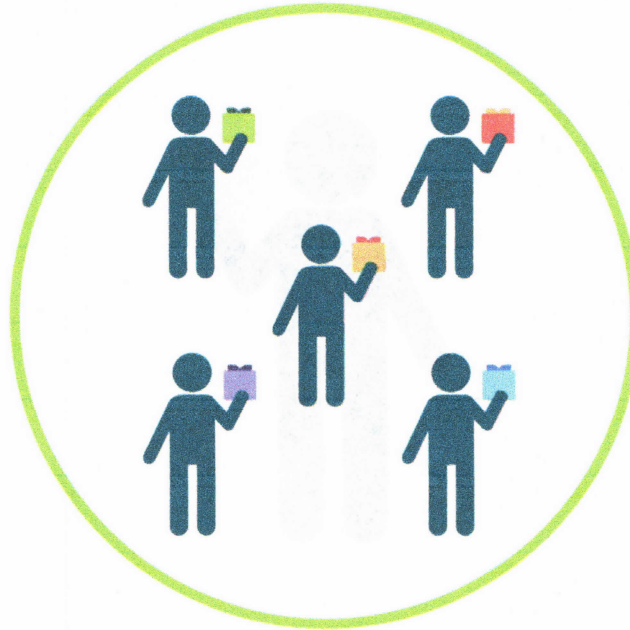
ABCD builds on the assets that are already found in the community and mobilizes individuals, associations, and institutions to come together to build on their assets—not concentrate on their needs. **The key is to begin to use what is already in the community.**



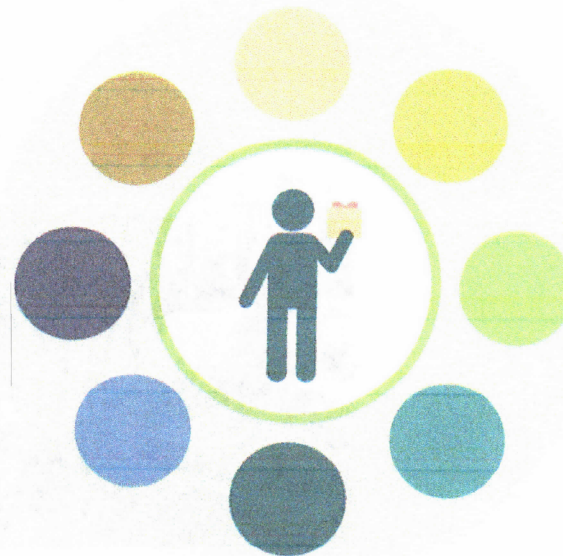
Gifts of Individuals



Gifts of Associations



Gifts of Healthy Institutions



Five Community Assets

1. Individuals
2. Associations
3. Institutions
4. Physical Space
5. Exchange

