



PRE-EMPLOYMENT MEDICAL

2024

Healthier Starts, Stronger Teams

ABOUT US



Our health services are physically based in Orange, located in the Central West of New South Wales, however we extend our assistance to companies and individuals across Australia and beyond. As a privately owned clinic, we specialize in offering a wide range of pre-employment medical assessments and support employers and individuals with various work-related health concerns.



Our services cater to a diverse range of clients, from individuals seeking to independently arrange and pay for their own health assessments to multinational corporations requiring onboarding of local or mobile workforces. We also work with local employers who prioritize responsible and forward-focused recruitment practices.



Dr Thim Yoon Chen
**GP with Post-Graduate Occupational
Medicine Qualifications**

B.Sc(Melb), MBBS, FRACGP FAFM(Malaysia)
AM(Malaysia), DTM&H(Bangkok), FAC
Tropical Medicine(QLD), FF Travel Medicine
(QLD)
Dip Dermatology (Wales), Dip STD & Aids
(Bangkok), LF Occupational Medicine Royal
College of Physicians (Ireland)



Dr Thim Yoon Chen

workplace safety

COST OF WORKPLACE INJURY

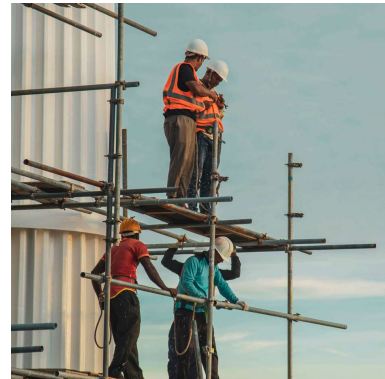
 **Workers Compensation
Claims in 2023**

110,000*

 **Total claim payments
made in 2023**

\$4.5B*

At The Wellness House, we are dedicated to assisting you in recognising the potentially catastrophic outcomes stemming from both physical and mental health issues among your employees.



Only 69% of workers return to work in 4 weeks*

Pre-employment medical assessments play a crucial role in safeguarding both employers and employees. By confirming the physical and mental fitness of employees to fulfill job requirements, these assessments mitigate the risk of workplace injuries and reduce employee turnover and workers' compensation claims.

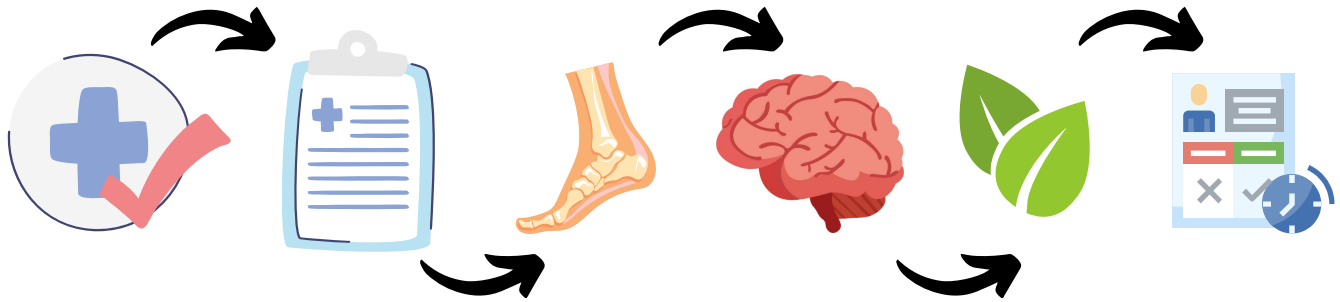
Ultimately, they contribute to enhanced employee satisfaction and productivity.

**Employees that do not complete
pre-employment
medicals are **2.38 times**ⁱ
more likely to experience a
musculoskeletal injury at work.**

The specific type of assessment conducted is tailored to align with the role prerequisites, industry standards, and work environment the employee will encounter. Our pre-employment medical assessments are fully customizable to accommodate the unique needs of each employee.

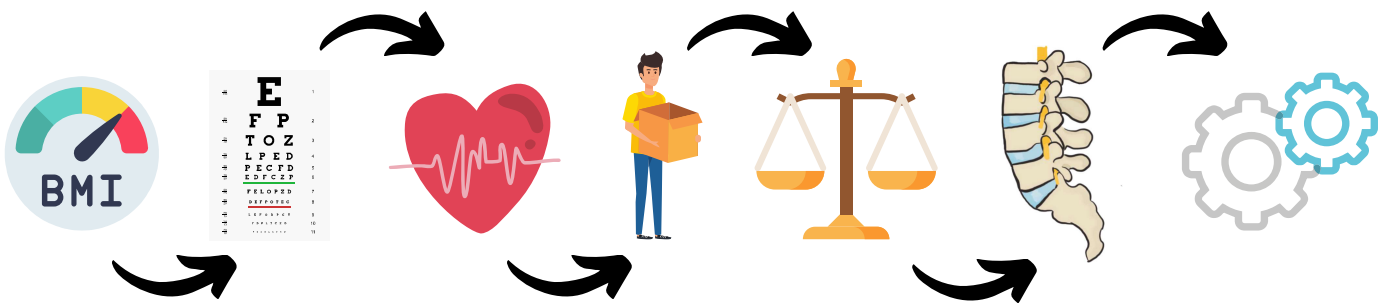
*The State Insurance Regulatory Authority (SIRA). (2023). Addendum to the 2022 Review of the Workers Compensation Scheme: Submission to the Standing Committee on Law and Justice (p. 2). Parliament of New South Wales.
i. Rosenblum, K. E., & Shankar, A. (2006). The effects of isokinetic pre-employment physical capability screening in the reduction of musculoskeletal disorders in a labor intensive work environment. *Work* (Reading, Mass.), 26(2), 215–228.

Preliminary assessment: E-Questionnaire



The health questionnaire serves as a crucial tool for gathering background information from employees, aiding in the assessment of their work history, overall health perception, past injuries, and psychological well-being. It incorporates established scales such as the Epworth Sleeping Scale, Kessler Psychological Distress Scale, and AUDIT Alcohol screening tool to ensure a thorough evaluation of the employee's history and functioning.

Medical Assessment: Pre-Employment Medical



Standard pre-employment health assessments encompass thorough evaluations of musculoskeletal health, psychosocial well-being, and medical history to assess potential risks.

Additional Screening:



In addition to standard pre-employment health assessments, optional add-on tests such as drug and alcohol screening, audiometry, spirometry, ILO reported chest x-rays, blood lead testing, and functional capacity tests by The Physio Station are available. These tests can be seamlessly integrated into any medical assessment for an additional fee. Certain roles may require specific additional testing due to their unique requirements or demanding physical nature.



Functional Capacity Assessments



The Physio Station offers Pre-Employment Screening to our clients, either standalone or in conjunction with the Pre-Employment Medicals conducted by The Wellness House doctors and nurses.

Screening involves taking a **current and past medical history, followed by a fitness test, range of motion tests, strength tests, and job-specific tests.** If we have conducted a Job Task Analysis for you we can use this to design a Pre-Employment Screening specific to your job roles, increasing the value of the report that we provide back to you.

Job Task Analysis

Job Task Analyses can be conducted to identify risks and manual hazardous tasks. This process involves observation of key manual tasks and a brief consultation of workers and managers.

Relevant Manual Hazardous Tasks may include;

- Repetitive or Sustained Force
- High or Sudden Force
- Repetitive Movement
- Sustained and/or Awkward Posture
- Exposure to Vibration

Following the conduction of a Job Task Analyses, a report is generated to the employer with recommendations to control musculoskeletal injury risk.

FEES

We are thrilled to introduce our innovative new service, redefining the landscape of our occupational health management. This innovative offering not only consolidates invoices and provides an efficient e-questionnaire system but also places a paramount emphasis on minimizing disruptions for managers and HR departments. With our comprehensive approach, we aim to revolutionize the way organizations manage their occupational health needs, ensuring seamless operations and unparalleled efficiency.

Key Features:

- Dedicated Occupational Health team
- E-Questionnaire for reduced wait times
- Monthly consolidated invoicing
- 24-hour provisional results turnaround
- Prioritized minimization of disruptions for managers and HR departments



| | Bronze \$499 | Silver \$587 | Gold \$763 |
|---|-----------------|-----------------|---------------|
| Medical History inc. Epworth, K10 and Alcohol Score | ✓ | ✓ | ✓ |
| Cardiovascular Assessment and Body Mass Index | ✓ | ✓ | ✓ |
| Vision and Colour Vision (Ishihara) | ✓ | ✓ | ✓ |
| Basic Frame, ROM, and Nervous System | ✓ | ✓ | ✓ |
| Neurological Examination | ✓ | ✓ | ✓ |
| Skin and Varicose Vein Examination | ✓ | ✓ | ✓ |
| Gastrointestinal | ✓ | ✓ | ✓ |
| ENT Assessment | ✓ | ✓ | ✓ |
| Instant DAS or Lab DAS | × | ✓ | ✓ |
| Urinalysis | × | ✓ | ✓ |
| Spirometry | ✓ | ✓ | ✓ |
| Audiometry | ✓ | ✓ | ✓ |
| ILO Chest X-Ray | ✓ | ✓ | ✓ |
| Functional Capacity Assessment @ The Physio Station | × | × | ✓ |

Includes GST

Standalone Items

| | Fee |
|---|-------|
| Instant DAS or Lab DAS | \$88 |
| Spirometry | \$88 |
| Vision and Colour Vision (Ishihara) | \$88 |
| Audiometry | \$88 |
| ILO Chest X-Ray (Referral Only) | \$75 |
| ILO Chest X-Ray @ PRP Imaging | \$196 |
| Functional Capacity Assessment @ The Physio Station | \$176 |
| Late Cancellation or No Show Fee (Medical Only) | \$150 |
| Late Cancellation or No Show (Functional Only) | \$98 |

Includes GST

Cancellation Fees

Services cancelled less than at least 24 hours notice will be billed as per the above service. If a candidate fails to attend their scheduled appointment/s this work will be billed as per the above. Candidate appointments that are rescheduled within 24 hours notice do not carry a fee.

Intellectual Property Rights

The intellectual property rights of these services remain the exclusive property of The Wellness House. Unauthorized copying or usage of these services is strictly prohibited without prior permission from The Wellness House.

Confidentiality

All information provided to the client and received by The Wellness House is treated with confidentiality and shall not be privy to any third party unless required by law.

PREMIUM PROGRAM

Unlock exclusive benefits with our premium program, available for just an additional \$20 per candidate.

The Wellness House a leading provider of occupational health services, is pleased to introduce our **PEM Premium Program**. Designed to alleviate the administrative burden of hiring companies, our program offers comprehensive support through an administration booking team, ensuring a seamless and efficient process for all involved parties. This program is tailored to meet the needs of hiring companies seeking a streamlined and hassle-free approach to managing occupational health assessments.

Dedicated Administration Team

Our experienced team will manage all aspects of appointment scheduling, candidate communication, and logistical coordination, allowing hiring companies to focus on their core business activities.

Comprehensive Coordination

From coordinating assessment dates to managing documentation, our administration booking team will handle every detail to ensure a smooth and hassle-free experience for all stakeholders.

Rescheduling Support

In the event of scheduling conflicts or unforeseen circumstances, our team will efficiently handle rescheduling tasks, guaranteeing minimal disruption to the hiring company's operations.

Candidate Outreach

We will proactively reach out to candidates to schedule their assessments, ensuring timely completion and minimizing delays in the hiring process.

Benefits

Time Savings: By outsourcing administrative tasks to our dedicated team, hiring companies can save valuable time and resources, allowing them to focus on strategic priorities.

Efficiency: Our streamlined approach reduces the risk of scheduling errors and ensures assessments are completed promptly, expediting the hiring process.

Enhanced Candidate Experience: Proactive communication and professional coordination contribute to a positive candidate experience, reflecting positively on the hiring company's employer brand.



Let's Join Forces for Workplace Wellness

 **Address**

The Wellness House
55 Bathurst Rd, Orange NSW 2800

 **Telephone**

02 6391 5900

 **Email**

admin@thewellnesshouse.com.au

 **Website**

www.thewellnesshouse.com.au