

AIMonitor - Smart Education System

by iRiS TechSol LLP

www.iristechno.in

Product Description

The **AIMonitor - Smart Education System** is an innovative AI-powered platform designed to revolutionize classroom management and education analytics. Catering to multiple user roles—Super Admin, Principal, Teachers, Students, Staff, and Parents—the system ensures streamlined operations and improved engagement through a **Web application** and **Mobile app**. Built on a modern **Edge computing architecture** and backed by a **Cloud server**, it combines low-latency processing with scalability for enhanced performance.

Web Application

The web application features a **user-friendly UI** and a vast array of tools for analytics and management:

- **Student-wise, Subject-wise, Topic-wise Performance:** Gain deep insights into individual student progress across subjects and topics.
- **Student Attendance and Lecture Management:** Automates attendance tracking and lecture scheduling for seamless operation.
- **Teacher Tools:** Teachers can publish tests, upload notes, and utilize **lecture analytics** to gather feedback and improve teaching methods.
- **Comprehensive Analytics Dashboard:** Provides actionable insights through a centralized interface, making performance, behavior, and engagement metrics easily accessible.

Mobile Application

The mobile application offers **real-time notifications** and enables students and parents to stay connected on the go:

- Students can **give tests**, **access notes**, and identify **weak areas** through personalized performance analytics.
- Teachers, staff, and parents can receive updates and insights in real time to stay informed and engaged.

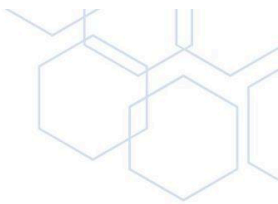
AI-Driven Security and Analytics Features

With robust security measures such as **Restricted area entry**, **People counting**, **Fire alarms**, **Arm detection**, **Panic Gesture detection**, **Fall Detection** the system ensures a safe and secure environment. It also provides advanced analytics, including **Attendance Monitoring**, **Tracking across cameras**, **Uniform Detection**, **Behavior analytics**, **Attentiveness monitoring**, and **performance tracking**, to foster an optimized and interactive learning ecosystem.

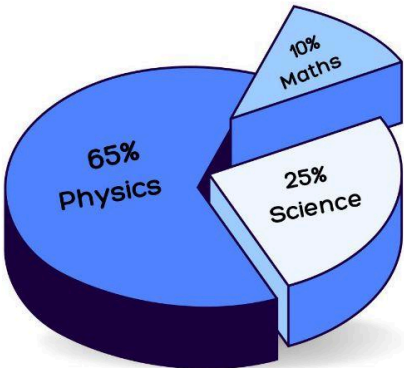
This AI-driven system combines Education, Safety, and Analytics into a single platform, empowering stakeholders to create a smarter, safer, and more engaging educational environment.



Behavior Analysis



Engagement Analytics:



Lecture Engagement Overview

Top Teacher: ▶▶ Prof. David | ▶▶ Prof. Sophia

81%

Attentive

12%

Unattentive

4%

Pro Activeness

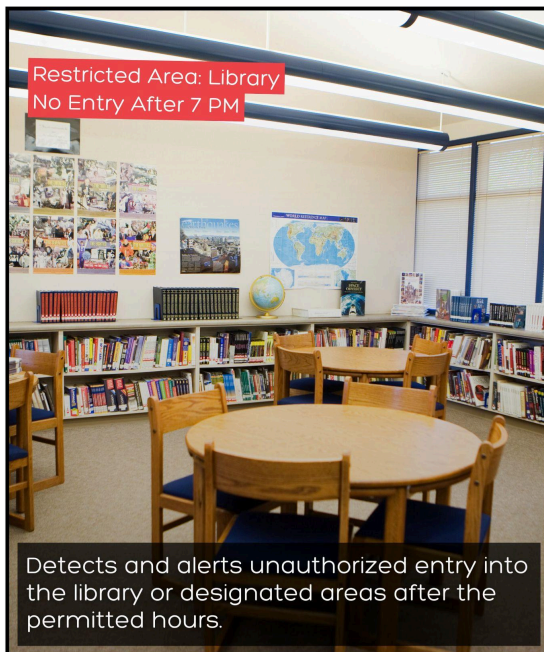
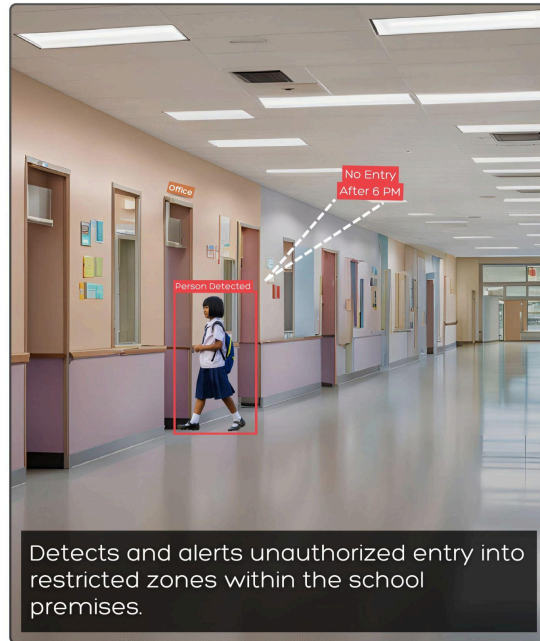
Subject ▼

Month ▼

	Attentive	Unattentive	ProActive
john Doe	81%	14%	5%
Jordon Luice	70%	18%	12%
Allex Mark	76%	16%	8%

Discover lecture-wise trends, student behavior insights, and top-performing teachers to drive impactful learning experiences.

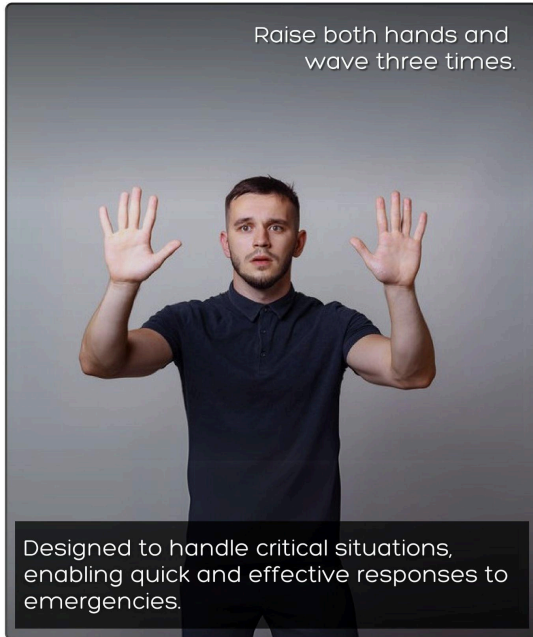
AIMonitor - Smart Education System by iRiS TechSol LLP



AIMonitor - Smart Education System by iRiS TechSol LLP



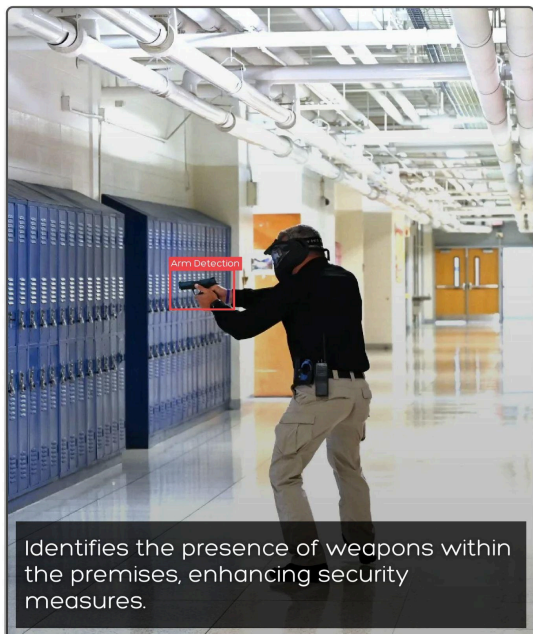
[Emergency Features]



[Crowd Alert]

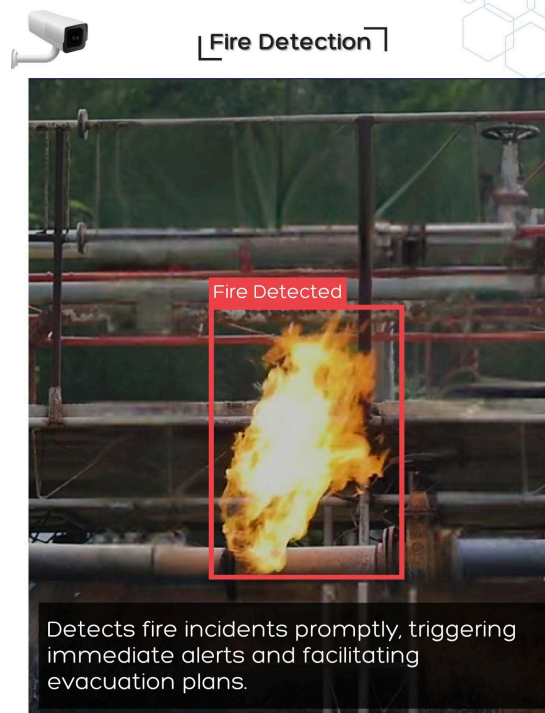
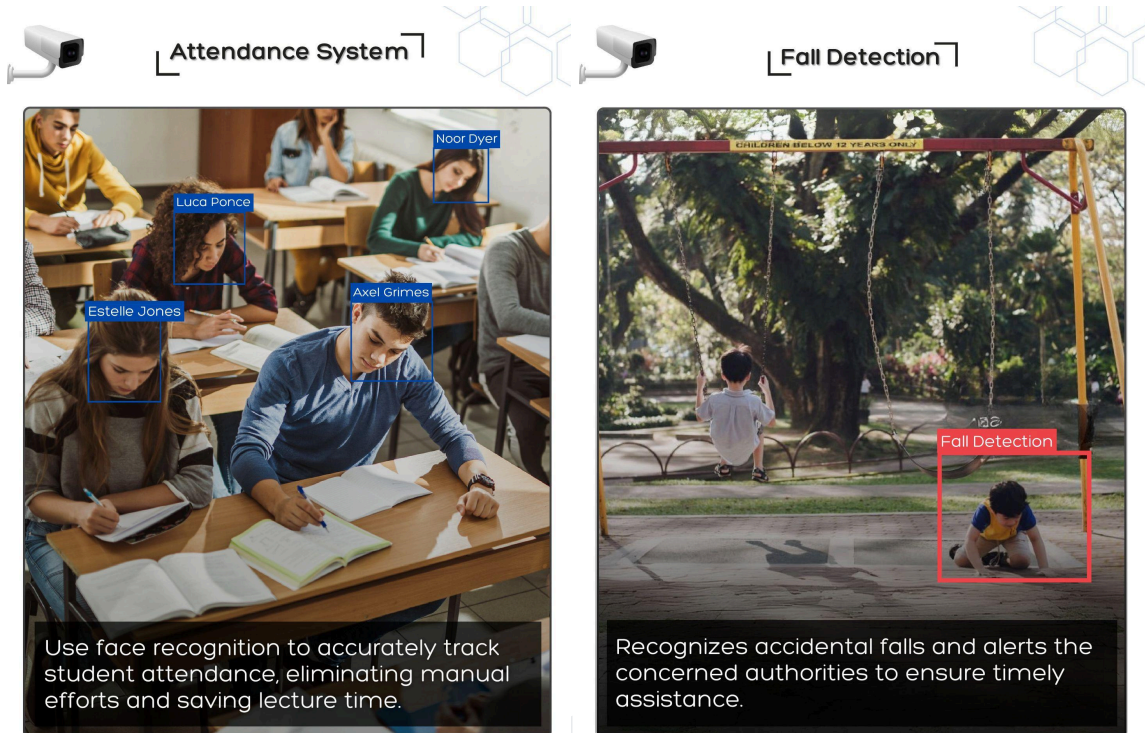


[Arm Detection]



[Pet Detection]





Product Features & Variants

Basic Package (Select any 1 feature among Optional features)

AI-Feature	Enable/Disable
People Count Alert (Optional)	<input checked="" type="radio"/>
Face Registration (Mandatory)	<input checked="" type="radio"/>
Face Recognition (Mandatory)	<input checked="" type="radio"/>
Attendance Monitoring (Mandatory)	<input checked="" type="radio"/>
Behaviour Analysis (Mandatory)	<input checked="" type="radio"/>
Attentiveness Analysis (Mandatory)	<input checked="" type="radio"/>
Fire Alerts (Optional)	<input checked="" type="radio"/>
Arm Detection Alerts (Optional)	<input checked="" type="radio"/>
Pet Detection Alerts (Optional)	<input checked="" type="radio"/>

Advance Package (Select any 3 features among Optional features)

AI-Feature	Enable/Disable
Restricted Area Alerts (Optional)	<input checked="" type="radio"/>
Fire Alerts (Optional)	<input checked="" type="radio"/>
Arm Detection Alerts (Optional)	<input checked="" type="radio"/>
Fall Detection Alerts (Optional)	<input checked="" type="radio"/>
Panic Gesture Alerts (Optional)	<input checked="" type="radio"/>
People Count Alerts (Optional)	<input checked="" type="radio"/>
Pet Detection Alerts (Optional)	<input checked="" type="radio"/>
Face Registration (Mandatory)	<input checked="" type="radio"/>
Face Recognition (Mandatory)	<input checked="" type="radio"/>
Attendance Monitoring (Mandatory)	<input checked="" type="radio"/>
Uniform Detection (Specific 1 property)(Optional)	<input checked="" type="radio"/>
Behaviour Analysis (Mandatory)	<input checked="" type="radio"/>
Attentiveness Analysis (Mandatory)	<input checked="" type="radio"/>
Tracking across Cameras (Optional)	<input checked="" type="radio"/>

Main Features Details

Behaviour Analysis :

We are able to detect student wise emotions if the student is registered using our face registration system. We are detecting **Alert, Excited, In-Doubt, Amazed, Struggling, and Impatient emotions** from the student's face with **accuracy**.

Attentive Analysis :

- Student's face is in-front of teacher (camera facing)
- If a student's face emotions are **Excited, Alert, Amazed, In-Doubt**.

UnAttentive Analysis :

- Student's face is **not** in-front of teacher (camera facing)
- If Student's face emotions are **Struggling, Hesitant**

Contact Details

iRiS TechSol LLP

www.iris techno.in

Registered Office:

#01, Shripad, Near Surdhara Circle, off Sarkhej -
Gandhinagar Highway, Thaltej,

Ahmedabad, Gujarat, India.

GST # 24AAFFI3230H1ZT

Email:

business@iris techno.in

ronak@iris techno.in

M: +91-82371 37372