



## ABBA SKYLIGHTS

RESIDENTIAL | INDUSTRIAL | COMMERCIAL | INSTITUTIONAL

*"A World of Skylight Options"*

**VELUX®**

Commercial

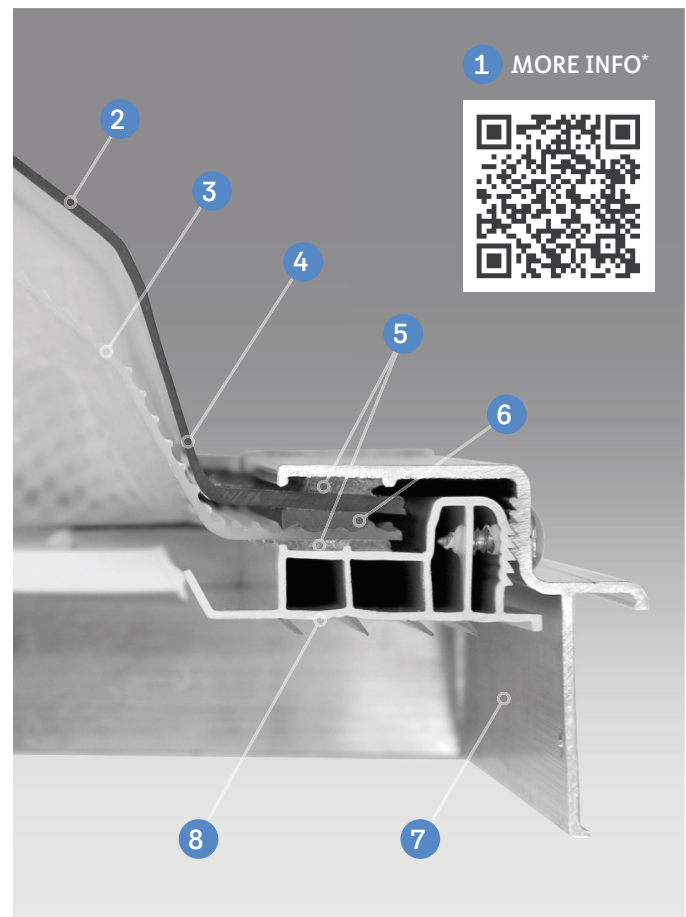
# The VELUX Dynamic Dome

A revolution in commercial skylights

The VELUX Dynamic Dome has once again revolutionized the commercial skylight market with features that emphasize our commitment to environmental sustainability and providing quality daylighting products.

## Upgraded Features

- 1 Sustainability** – VELUX is continuously seeking to minimize our carbon footprint which includes developing smart and energy saving products. The new design of a fully assembled 5'x6' Dynamic Dome sees a product carbon footprint reduction of 7.4%.
- 2 Outer Dome** – While keeping to its uncompromising strength and revolutionary engineering, the new optical outer dome design of the Dynamic Dome transmits 20% more light into spaces below.
- 3 White Prismatic Inner Dome** – The inner dome achieves 100% light diffusion and is available for larger size needs or to meet HVHZ code requirements.
- 4 Sidewall of Dome** – Masterfully designed to match the angles of the sun in the morning and afternoon hours (lower light periods) to improve light transmittance.
- 5 Impenetrable Water Protection** – The combination of two layers of InstantGlaze sealant ensures a fully watertight design.
- 6 Glazing Spacer** – Porous for any moisture that may form in between the domes.
- 7 One-Piece Aluminum Frame** – Improved frame strength and thermal performance from previous two-piece frame design.
- 8 PVC Thermal Break** – The unique two-way function of the PVC inner frame provides a 100% thermal break, as well as a water management system, evacuating all moisture to the exterior.
  - » Dry Installation - no curb sealants or tape needed
  - » Combined Wicking System: Absorbs moisture from the inner frame to evacuate to the exterior



# The VELUX Dynamic Dome



## Sizes for Dynamic Dome Skylights

	2448	2496	2412	3012	3636	3660	3672	3696	3612	4783	4848	4860	4872	4896	4812
W - inches x H - inches															
Curb-mount - outside curb	27" x 51"	27" x 99"	27" x 123"	33" x 123"	39" x 39"	39" x 63"	39" x 75"	39" x 99"	39" x 123"	50" x 86"	51" x 51"	51" x 63"	51" x 75"	51" x 99"	51" x 123"
Deck-mount - rough opening	24" x 48"	24" x 96"	24" x 120"	30" x 120"	36" x 36"	36" x 60"	36" x 72"	36" x 96"	36" x 120"	47" x 83"	48" x 48"	48" x 60"	48" x 72"	48" x 96"	48" x 120"
Maximum skylight clearance	28 1/4" x 52 1/4"	28 1/4" x 100 1/4"	28 1/4" x 124 1/4"	34 1/4" x 124 1/4"	40 1/4" x 40 1/4"	40 1/4" x 64 1/4"	40 1/4" x 76 1/4"	40 1/4" x 100 1/4"	40 1/4" x 124 1/4"	51 1/4" x 87 1/4"	52 1/4" x 52 1/4"	52 1/4" x 64 1/4"	52 1/4" x 76 1/4"	52 1/4" x 100 1/4"	52 1/4" x 124 1/4"

	5060	6060	6072	6096	6012	7272
Curb-mount - outside curb	62 3/8" x 74 3/8"	63" x 63"	63" x 75"	63" x 99"	63" x 123"	75" x 75"
Deck-mount - rough opening	59 3/8" x 71 3/8"	60" x 60"	60" x 72"	60" x 96"	60" x 120"	72" x 72"
Maximum skylight clearance	63 3/8" x 75 5/8"	64 1/4" x 64 1/4"	64 1/4" x 76 1/4"	64 1/4" x 101 1/4"	64 1/4" x 124 1/4"	76 1/4" x 76 1/4"



qr.codes.pro/uUxFeY

### Technical Documents:

- Testing and Certification
- Specifications
- CAD Files and BIM Models
- Installation Instructions
- LEED Data

## Options

LuxGuard  
(Polycarbonate)

15-Year Warranty - including  
hail breakage up to 2"

LuxGuard Plus  
(Polycarbonate) HVHZ and NOA

15-Year Warranty - including hail  
breakage up to 2"

IMA  
(Impact Modified Acrylic)

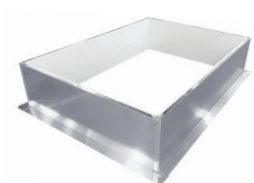
5-Year Warranty

Satin Sky  
(IR Acrylic)

5-Year Warranty  
Part of the Energy Dome Series

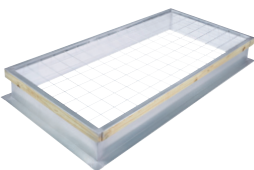
Custom sized curb-mount and deck-mount traditional domes are also available. See Traditional Dome Series.

## Curbs for Dynamic Dome



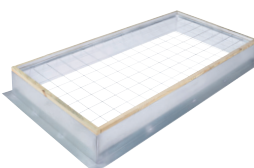
### Curb: CCAW

**Insulation:** Factory Insulated - Double Wall  
**Material:** Aluminum  
**Height Options:** 9", 12", 16"



### Curb: CCA6

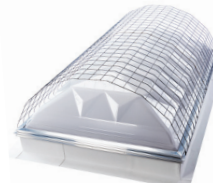
**Insulation:** Field Insulated - Single Wall  
**Material:** Galvanized Steel  
**Height Options:** 9", 12", 16", 18"



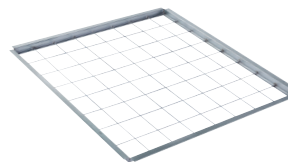
### Curb: CCA3

**Insulation:** Factory Insulated - Double Wall  
**Material:** Galvanized Steel  
**Height Options:** 9", 12", 16", 18"

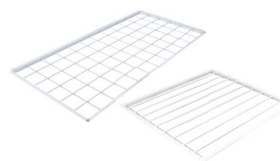
## Fall Protection for Dynamic Dome



**Exterior  
safety  
screen:**  
**CAE**



**Interior  
safety  
screen:**  
**CRGA ICD**  
6" o.c. mesh



**Interior  
security  
bars:**  
**CRGA BB/SB**  
8" o.c. mesh (BB)  
5" o.c. parallel (SB)



The safety of others is of the utmost importance to VELUX. In addition to selecting the correct skylight for the application, VELUX recommends that the customer consider protecting all skylight openings and skylights with one or more of the fall protection accessories. VELUX recommends that the building owner or manager restrict roof access only to personnel who have been sufficiently cautioned as to the location of the skylights, and warned not to sit, step or walk on the skylights. Building owner or manager should provide fall protection around the skylight in accordance with provincial regulations.