

VELUX®

The No Leak Skylight™



ABBA SKYLIGHTS

RESIDENTIAL | INDUSTRIAL | COMMERCIAL | INSTITUTIONAL

"A World of Skylight Options"

Sun Tunnel Skylights

Bright Natural Light.
Quick Installation.

Fill Every Room with Natural Light

Daylight is powerful, which is why every room deserves to be filled with it. The VELUX Sun Tunnel Skylight's versatile design offers quick and easy installation, letting you enjoy a new world of natural light in as soon as an afternoon.

Meet Your Sun Tunnel Skylight

- 1 Clear UV Resistant Dome**
Captures the most light possible with a clear dome.
- 2 Adjustable Pitch Adapter**
Pivots the tunnel towards the sun and allows for easier installation.
- 3 One-Piece Metal Flashing**
Provides maximum light capturing while guaranteeing no water penetration.
- 4 Tunnel Assembly System**
Offers quick and easy installation of tunnel.

Rigid Tunnel Option - 99% reflective, 24" sections assemble quickly with the **Flexi Loc™** tunnel system.

Flexible Tunnel Option - Faster method of installation with seamless all-in-one elbow and tunnel system.

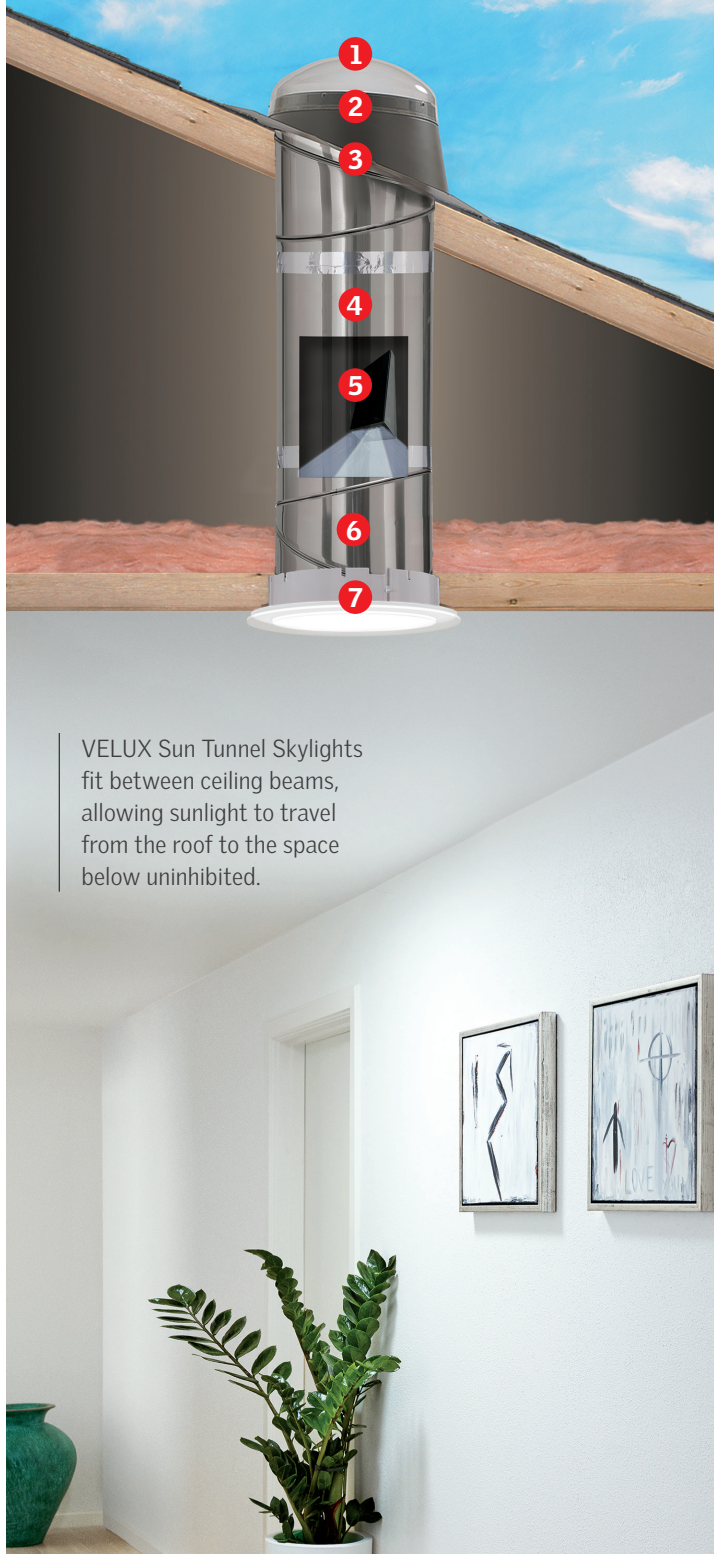
- 5 Solar Night Light (Rigid Tunnel)**
Ensures sun tunnels provide light all day *and* night.* *Optional add-on.*

*Must be purchased with sun tunnel to receive federal tax credit.
**Federal tax credit based off total product and installation cost.
Visit veluxusa.com/taxcredits

- 6 Adjustable Elbow (Rigid Tunnel)**
Rotates 45°. Elbows are 12" long.

- 7 Pre-Assembled Ceiling Ring**
Diffuses light into the space using an energy efficient frosted dual diffuser system. Diffuser options can be customized to meet décor and style.

Eligible for
30%
Federal Tax
Credit**



VELUX Sun Tunnel Skylights fit between ceiling beams, allowing sunlight to travel from the roof to the space below uninhibited.

Choosing Your Sun Tunnel Skylight

There are several sun tunnel options for you to choose from, but picking one for your home doesn't have to be complicated. We'll make it easy!

Two Types of Tunnels

Rigid Tunnels

- Designed as a highly reflective tunnel, the rigid tunnel lets in the most light.
- Enables longer runs
- Excellent for areas with less sunlight
- Easy assembly of tunnel with Flexi Loc™ system

Flexible Tunnels

- The flexible sun tunnel is movable and able to bend around tight, obstructed spaces
- Fast and easy installation
- Softens and provides additional light diffusion
- Excellent for sunny areas and short runs



Before

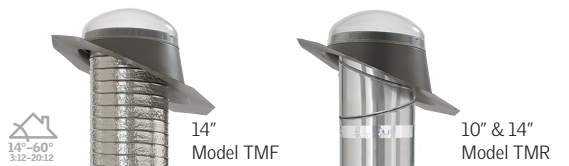


After



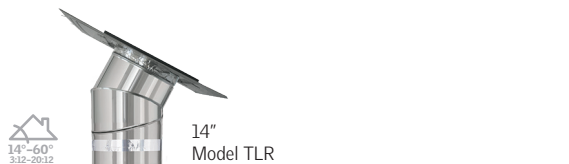
Low-Profile Metal Flashing:

- Best for south, west, and east facing roofs
- Parallel to roof and designed to blend with roofline



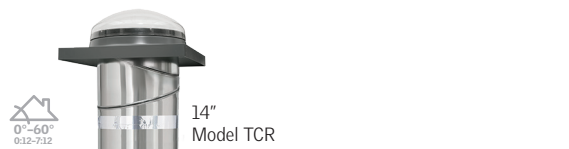
Pitched Metal Flashing:

- Provides consistent light distribution throughout the day
- Provides straighter tunnel run through many different roof pitches



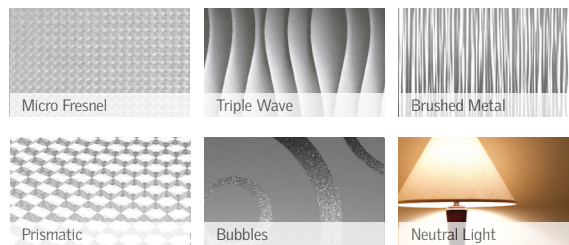
Low-Profile Flat Glass Flashing: (Available in 14\"/>

- Low-profile glass design creates sleek appearance
- Perfect for developments where local ordinances do not allow acrylic domes on the roof



Curb Metal Flashing:

- One-piece metal curb-mounted flashing
- Ideal for low roof slopes and/or tile roofing applications



Diffuser Options:

- Select from a range of micro-engineered decorative diffusers to increase interior aesthetics and visual appeal.

Accessories

Sun Tunnel Skylight Accessories

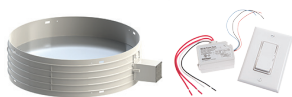
NEW

The VELUX Sun Tunnel Solar Night Light



Provides constant low-level light when the sun sets. Ensures sun tunnels provide light all day *and* night. Available for all residential rigid sun tunnels.

Daylight Controller (ZTP) Power Supply (ZZZ 233)



Allows the user to control the amount of daylight that enters a room. Perfect for rooms that require room darkening. Available in 14" for rigid tunnels.

Rigid Tube (ZTR)



Additional 24" tube section when tunnel length exceeds 48".

Suspension Wire kit (ZTZ 203)



12-gauge wire and fastener set to secure longer tunnel sections.

Universal Electric Light Kit (ZTL)



Energy efficient tubular daylight compatible with 26-watt CFL and LED bulbs. Installs easily within hard ceiling diffuser assemblies. *GU24 bulb base required. Available for all models.*

Vapor Barrier (ZTY)



Molded, impermeable, thin vapor barrier sheet prevents moisture from penetrating ceiling opening. Recommended for new installations in cold climates.

Elbows (ZTE)



Durable, interchangeable 45° elbows that are 12" long and come in 3 diameters. Multiple elbows can be joined together with rotating couplers.

Rotating Coupler (ZTZ 211)



Easy to install tunnel and elbow coupler that enables quick tunnel connections. Rotating joint helps align tunnel sections.

Energy Kit (ZTC 0041US)



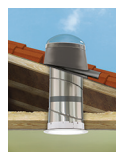
Designed to increase the energy efficiency of the VELUX Sun Tunnel Skylight while enabling it to be ENERGY STAR® certified.

Diffusion Enhancer (ZTZ 209)



A highly reflective, obscure 6" band designed to diffuse direct sunlight.

Pitched Tile Flashing (ZTM)



Painted, malleable, aluminum sheet provides a water-tight flashing without the use of sealants. Available for 10" and 14".

Curb-mounted Tile Flashing (ECW)



Pliable, pleated, curb-mounted tile flashing system engineered for tile roofing material. Available for 14".

Product Details

Rigid Units Include:

- Flashing complete with dome
- Two 12" elbows
- 24" extension
- Ceiling diffuser assembly complete with frosted diffuser

Flexible Units Include:

- Flashing complete with dome
- 8' of tunnel for 14" units
- 12' of tunnel for 22" units
- Ceiling diffuser assembly complete with frosted diffuser

Note: Additional tunnel available as needed

Square Footage Recommendations:

- 10" Rigid (TGR/TMR) - up to 200 sq.ft.
- 14" Rigid (TGR/TMR/TLR/TCR) - up to 325 sq.ft.
- 14" Flex (TGF/TMF) - up to 150 sq.ft.
- 22" Flex (TGF) - up to 325 sq.ft.

Note: These are all general guidelines. Sun angles, length of tunnel, roof orientation, tunnel straightness, and room consideration may affect this number.

Maximum Tunnel Length Recommendations:

- Rigid 10" is 20' and 14" is 30' (TGR/TMR/TLR/TCR)
- Flex 14" (TGF/TMF) is 8'
- Flex 22" (TGF) is 12'

Note: Orientation of roof and straightness of tunnel are both important factors.

Other Options:

- Impact models (for hurricane prone areas)
- Commercial Sun Tunnel Skylights for school and industrial applications