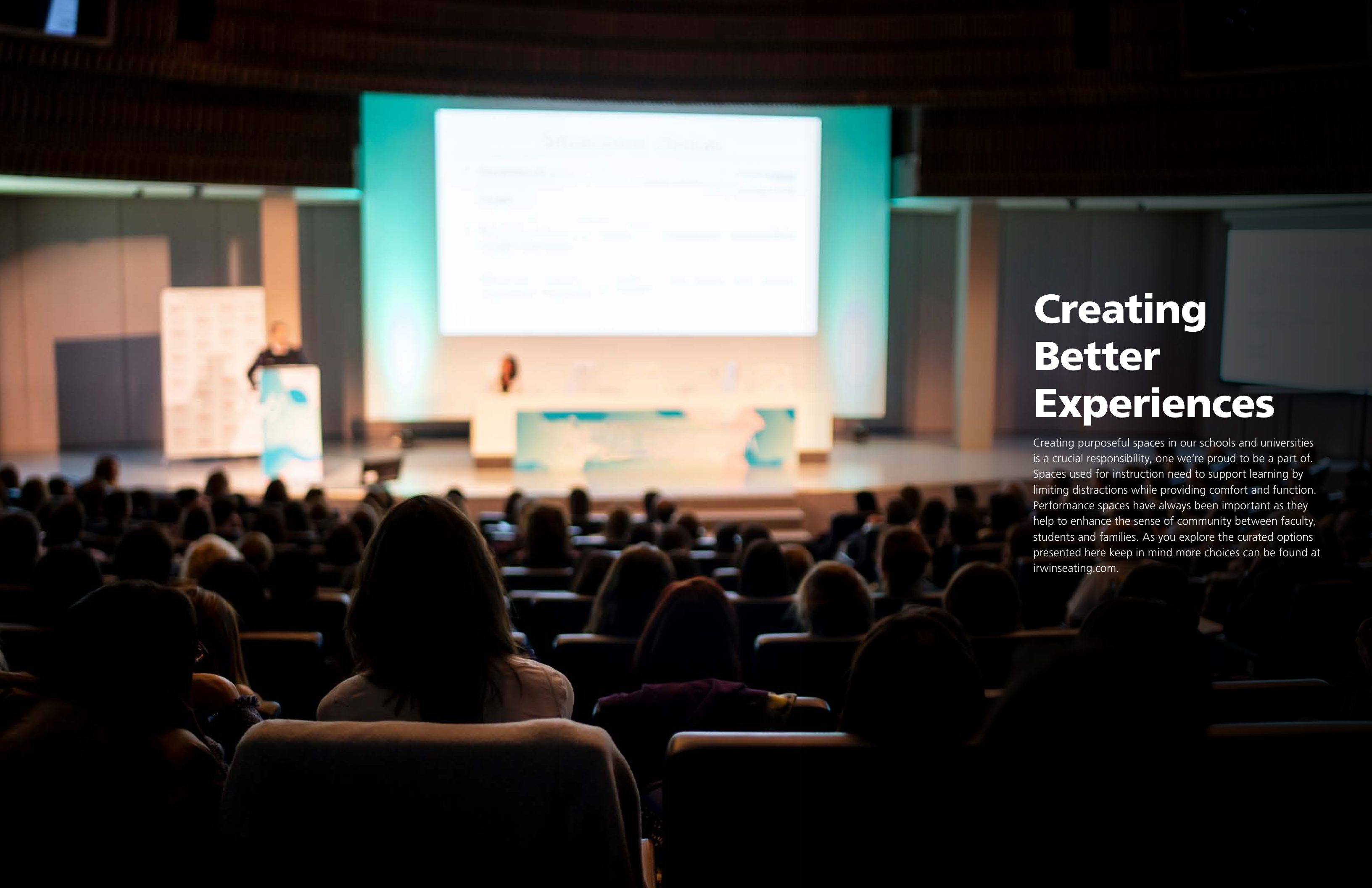




**IRWIN AUDITORIUM**



# Creating Better Experiences

Creating purposeful spaces in our schools and universities is a crucial responsibility, one we're proud to be a part of. Spaces used for instruction need to support learning by limiting distractions while providing comfort and function. Performance spaces have always been important as they help to enhance the sense of community between faculty, students and families. As you explore the curated options presented here keep in mind more choices can be found at [irwinseating.com](http://irwinseating.com).



# Marquee

Marquee backs are formed with integral lumbar support and a 36" back height to provide proper support for the lower back and shoulders. Marquee backs are tufted for a refined, crisp appearance and can be paired with a multitude of chair components, accessories and finishes to make it fit any aesthetic or function.

**A. Marquee No. 51.12.17.4**  
No. 51 Marquee back, No. 12 seat with ergo cushion assembly, No. 17 aisle panels with block front, comfort-curved solid hardwood armrests, concealed LED aisle lights

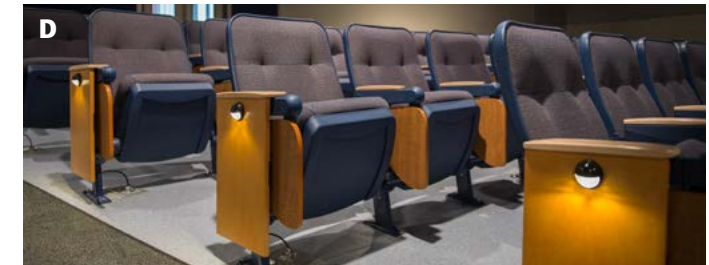
**B. Marquee No. 51.12.00.4**  
No. 51 Marquee back, No. 12 seat with serpentine spring substrate, No. 00 open aisle standard, comfort-curved solid hardwood armrests

**C. Marquee No. 51.20.10.4**  
No. 51 Marquee back, No. 20 wood bottom seat, No. 10 aisle panel with veneer insert panel, comfort-curved polymer armrests

**D. Uchida Hall**  
San Jose State University  
San Jose, California  
Marquee No. 51.12.60.4

**E. Smith Brasher Hall**  
Central New Mexico Community College  
Albuquerque, New Mexico  
Marquee No. 51.12.86.4

**F. American Leadership Academy**  
Gilbert, Arizona  
Marquee No. 51.12.10.4





# Citation

Citation backs are designed with a traditional rectangular shape and a 34" back height. Citation is available with a variety of seat components, aisle end panels, armrests and accessories to make it a functional and durable choice for your project.

**A. Citation No. 90.12.86.4**  
No. 90 back, No. 12 seat with ergo cushion assembly, No. 86 aisle panels, riser mounted, laminate surfaced solid hardwood armrests, writing tablets

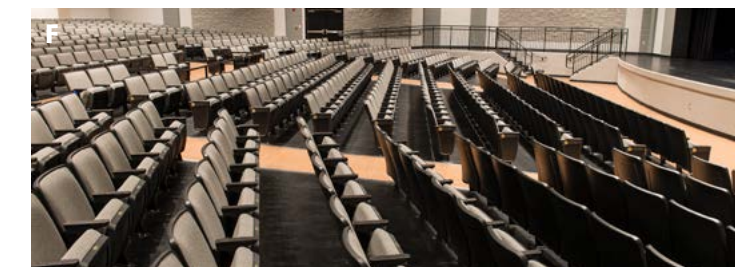
**B. Citation No. 90.12.00.4**  
No. 90 Citation back, No. 12 seat with a traditional serpentine spring support, No. 00 open aisle standard, comfort-curved polymer armrests

**C. Citation No. 90.12.10.4**  
No. 90 Citation back, No. 12 seat with serpentine spring cushion assembly, No. 10 aisle panels with veneer insert panel, comfort-curved solid hardwood armrests, LED aisle lights

**D. College of Health Professions**  
Virginia Commonwealth University  
Richmond, Virginia  
Citation No. 90.12.86.4

**E. Blocker Hall**  
Texas A & M University  
College Station, Texas  
Citation No. 90.12.00.4

**F. Coosa High School**  
Rome, Georgia  
Citation No. 90.12.10.4





# Millennium

Millennium backs feature the same durable construction as Citation only with an arched top. The backs can be tufted, and the rear panels are available in 15 standard colors to help match any decor.

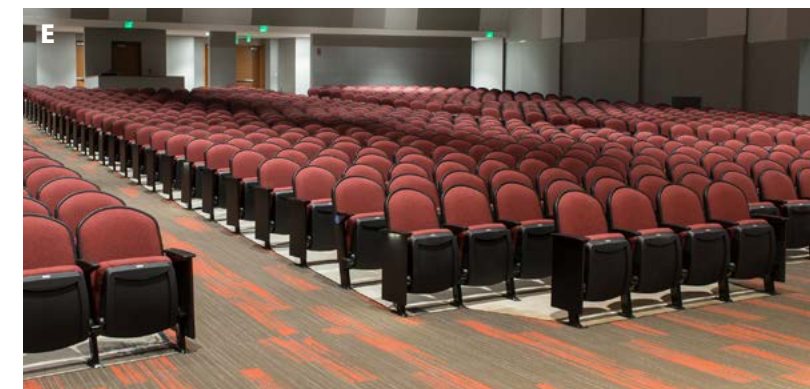
**A. Millennium No. 91.12.00.4**  
No. 91 back, No. 12 seat with ergo cushion assembly, No. 00 open aisle standards, comfort-curved polymer armrests, writing tablets, E-link power system

**B. Millennium No. 91.12.10.4**  
No. 91 Millennium back, No. 12 seat with serpentine spring cushion assembly, No. 10 aisle panels with veneer insert panel, comfort-curved solid hardwood armrests, low voltage LED aisle lights

**C. Millennium No. 91.12.66.4**  
No. 91 back, No. 12 seat with ergo cushion assembly, No. 66 veneer surfaced aisle panel with cantilevered mounting foot, flat solid hardwood armrests

**D. Flawn Hall**  
University Texas San Antonio  
San Antonio, Texas  
Millennium No. 91.12.14.4

**E. Archbishop Spaulding High School**  
Severn, Maryland  
Millennium No. 91.12.60.4





A

## Allegro & Andante

Allegro and Andante have identical construction with the exception of Allegro's back, which has a front-facing wood reveal along the top edge. Both backs are shaped with an arched top edge and are assembled with concealed fasteners for an uninterrupted decorator panel. Each model is available in heights of 30" and 35".



B



C

**A. Allegro No. 27.12.74.4**

No. 27 Allegro back, No. 12 seat with serpentine spring substrate and veneer insert panel, No. 74 aisle panel with block front, comfort-curved solid hardwood armrests

**B. Andante No. 37.12.17.4**

No. 37 Andante back, No. 12 seat with ergo cushion assembly, No. 17 aisle panel, laminate surfaced armrests, writing tablets

**C. Andante No. 37.21.14.4**

No. 37 Andante back, No. 21 fully upholstered seat, No. 14 aisle panel with block front, comfort-curved solid hardwood armrests

**D. Turner Auditorium**

Johns Hopkins University  
Baltimore, Maryland  
Allegro No. 27.17.17.4

**E. Beachwood High School**

Beachwood, Ohio  
Allegro No. 27.12.74.4

**F. Louise E. Addicott & Yatish J. Joshi Performance Hall**

Indiana University South Bend  
South Bend, Indiana  
Andante No. 37.12.17.4





## Saturn & Meteor

Depending on how you choose to accessorize your seating, Saturn and Meteor chairs are great choices for lecture halls, a recital space or a performing arts theatre. Both models are available in laminate or veneer back panel surfaces and are assembled with tamper resistant fasteners.



**A. Saturn No. 22.12.00.4**  
Laminate surfaced No. 22 Saturn back, No. 12 ergonomic seat, No. 00 open aisle standards, comfort curved, polymer armrests, foot shrouds

**B. Meteor No. 8.20.14.4**  
Veneer surfaced No. 8 Meteor back, No. 20 wood bottom seat, No. 14 inclined aisle panels, comfort-curved solid hardwood armrests, 151 square inch writing tablets

**C. Meteor No. 8.12.56.4**  
Veneer surfaced No. 8 Meteor back, No. 12 seat with serpentine spring substrate, No. 56 veneer surfaced aisle panels, flat solid hardwood armrests

**D. Greece Central PAC**  
Greece, New York  
Meteor No. 8.12.86.4

**E. Goucher College, Merrick Hall**  
Baltimore, Maryland  
Meteor No. 8.15.60.4

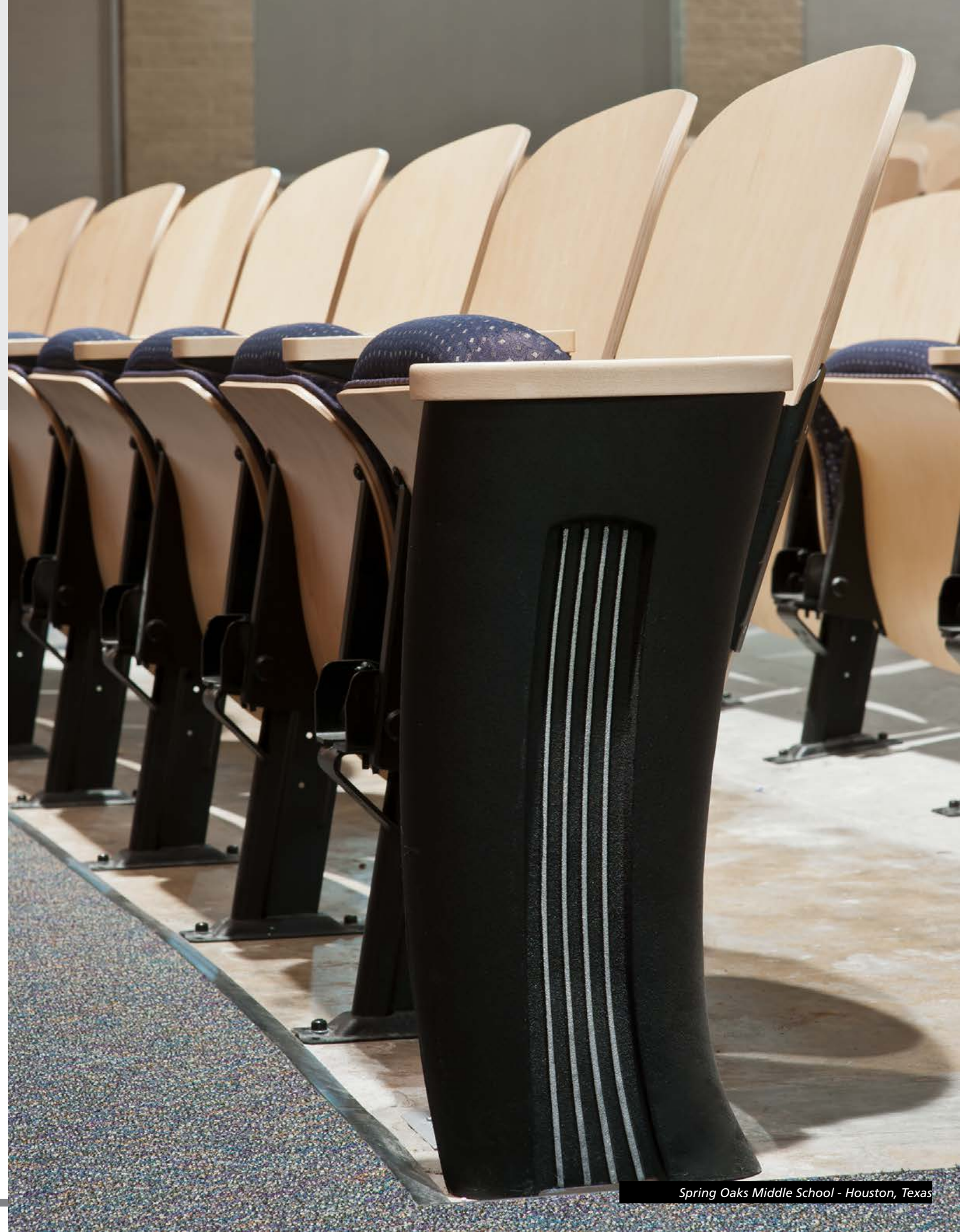




## Crusader

The Crusader is a classic design manufactured with modern technology to ensure durability. Backs and seats are formed from seven, cross banded hardwood plies and surfaced with grade A face veneer. Crusader backs can be paired with most seat components, writing tablets and aisle end panels.

*Pictured above Crusader No. 1.14.86.4 is shown with the No. 14 formed plywood, self-rising seat, No. 86 keystone aisle panel and flat solid hardwood armrests*







## Patriot

Patriot chairs feature ergonomically designed, molded polymer backs and seats for exceptional comfort and outstanding durability. Patriot seats are provided with a cam seat-lift mechanism that has surpassed 1 million cycles in independent testing.

**A. Patriot No. 30.52.36.30** is shown with laminate surfaced aisle panels and armrests, row letter and seat number plates and Tru-Fold writing tablets

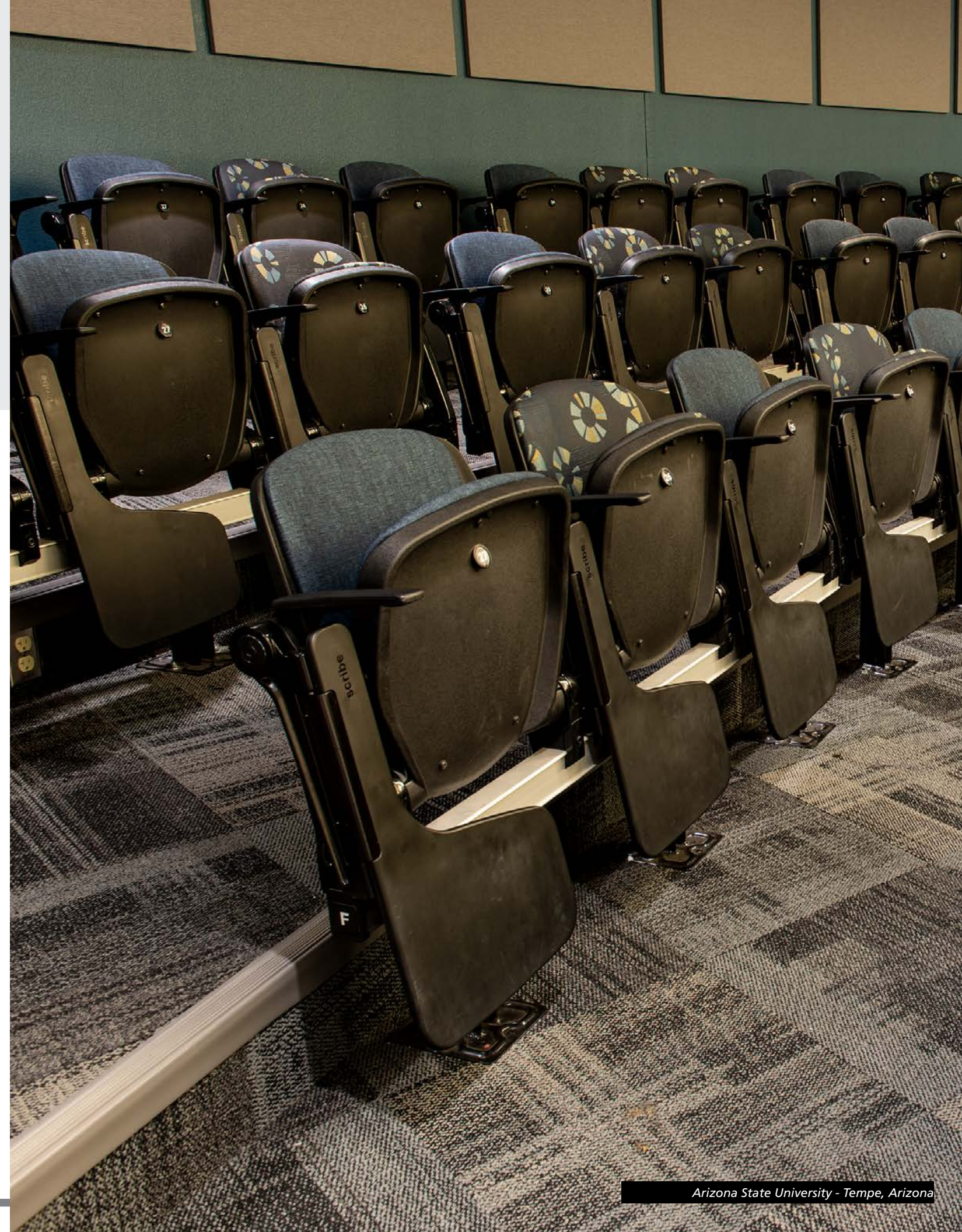
**B. Patriot No. 31.53.36.30** is shown with padded and upholstered backs and seats, laminate surfaced aisle panels and armrests, polymer center armrest



## Integra

The beam mount Integra is available with Scribe writing tablets, making it one of the few lecture hall seating products available for both fixed and telescopic applications. The generous writing tablet is molded from a durable phenolic plastic in one piece.

*Pictured above* Integra No. 215.215.13.13 non-upholstered backs and seats with floor mount stanchions and Scribe writing tablets



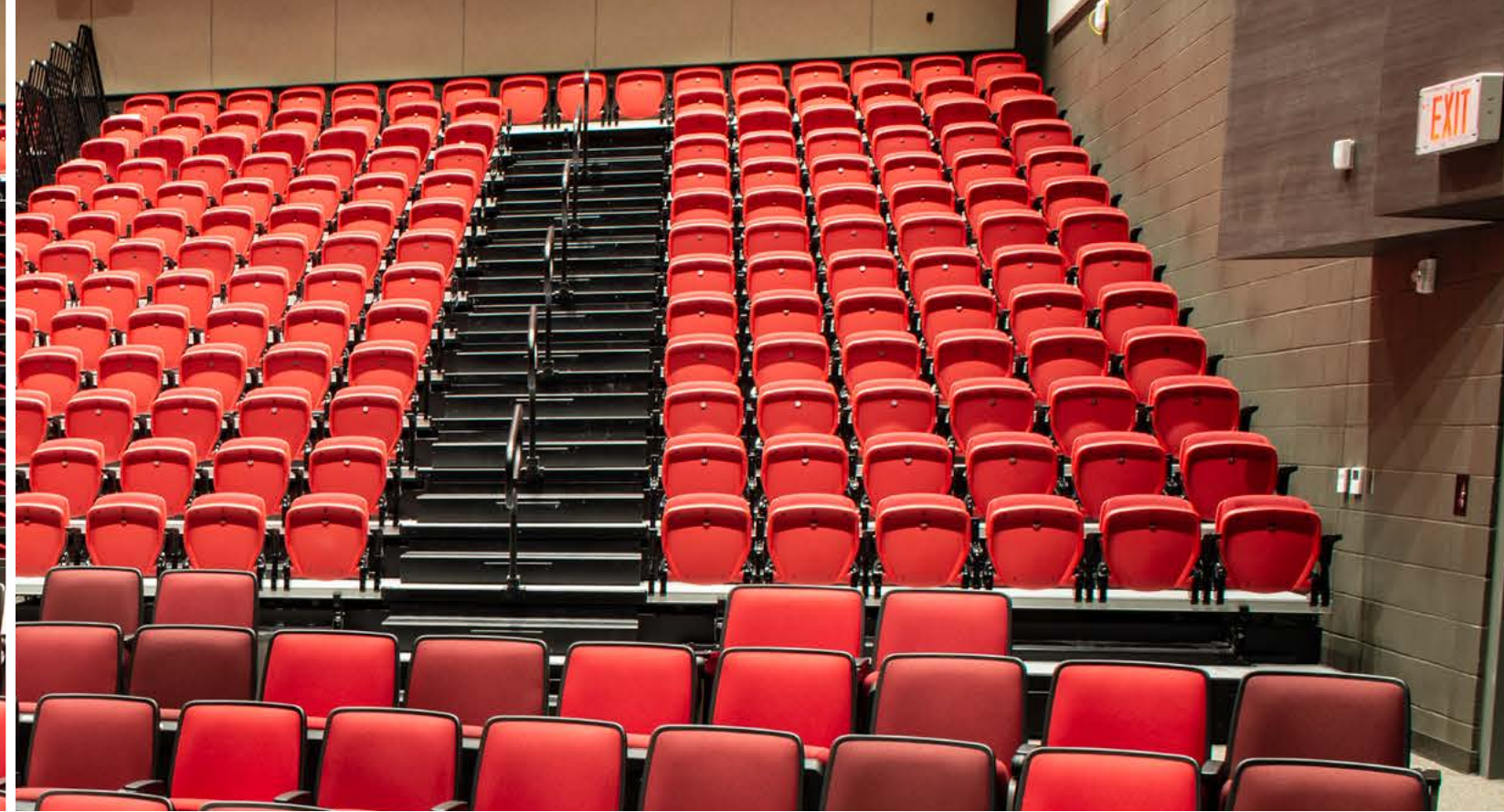


## Restoration Services

Restoration is an excellent way to maintain the original design intent of an auditorium or theatre while practicing environmental stewardship. Often, the best solution is a mix of new and original components. With 115 years of experience, the Irwin Seating team can help you honor the past while providing comfort and security for the future.

*Pictured above* American Seating 16M before and after restoration of all chair components

*Pictured opposite* new backs, seats and center standards with restored armrests and cast aisle end standards

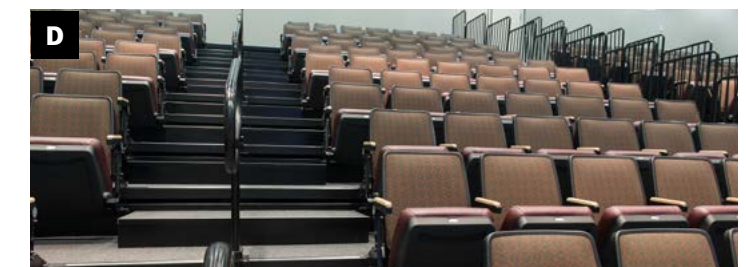


## Telescopic Seating

As our customers find more uses for their spaces, the use of retractable systems continues to grow in popularity. The innovative VersaTract telescopic seating supports this trend with understructure components that scale effortlessly.

With Irwin, you can choose the type of seating that suits your facility, whether it's beam-mount Integra chairs, Prestige Seating or any option in between. Our telescopic seating sets the standard by providing a stable walking surface and consistent, reliable operation.

A



**A. Furr High School**  
Houston, Texas  
Integra Chairs on VersaTract Bleachers

**B. Spring Hill High School**  
Chapin, South Carolina  
Integra Chairs on VersaTract Bleachers

**C. Denver Leadership Academy**  
Denver, Colorado  
Integra Chairs on VersaTract Bleachers

**D. Hacienda Heights Community Ctr.**  
Hacienda Heights, California  
Prestige Nose-Mount Citation



## Options & Accessories

When it comes to setting the right tone, seating can make a dramatic impression. This is why we provide a broad selection of options and accessories. Meet with our team to discover all of the ways you can create a custom seating experience.



Flat solid hardwood armrest



Laminate surfaced solid hardwood armrest



Comfort-Curved solid hardwood armrest



Comfort-Curved polymer armrest (No. 4 platform only)



Scrolled solid hardwood armrest (Nos. 8, 12 & 17 platforms only)



Marquee style solid hardwood armrest (Nos. 8, 12 & 17 platforms only)



Concealed LED aisle light



Row letter plate (2" shown with bronze finish)



Movable Base



Rear Mount Cupholder



Beacon LED aisle light



Seat number plate (shown with clear aluminum finish)



ADA Flip-Up Aisle End



Cupholder Armrest (varies by chair platform)



Focal LED aisle light



Donor plate (shown with clear aluminum finish)



ADA Swing-Away Aisle End



Foot Shrouds (No. 4 chair platform only)



Upholstered Seat Insert Panel for No. 12 seat



Cantilevered Aisle Standards



Veneer surfaced Seat Insert Panel for No. 12 seat



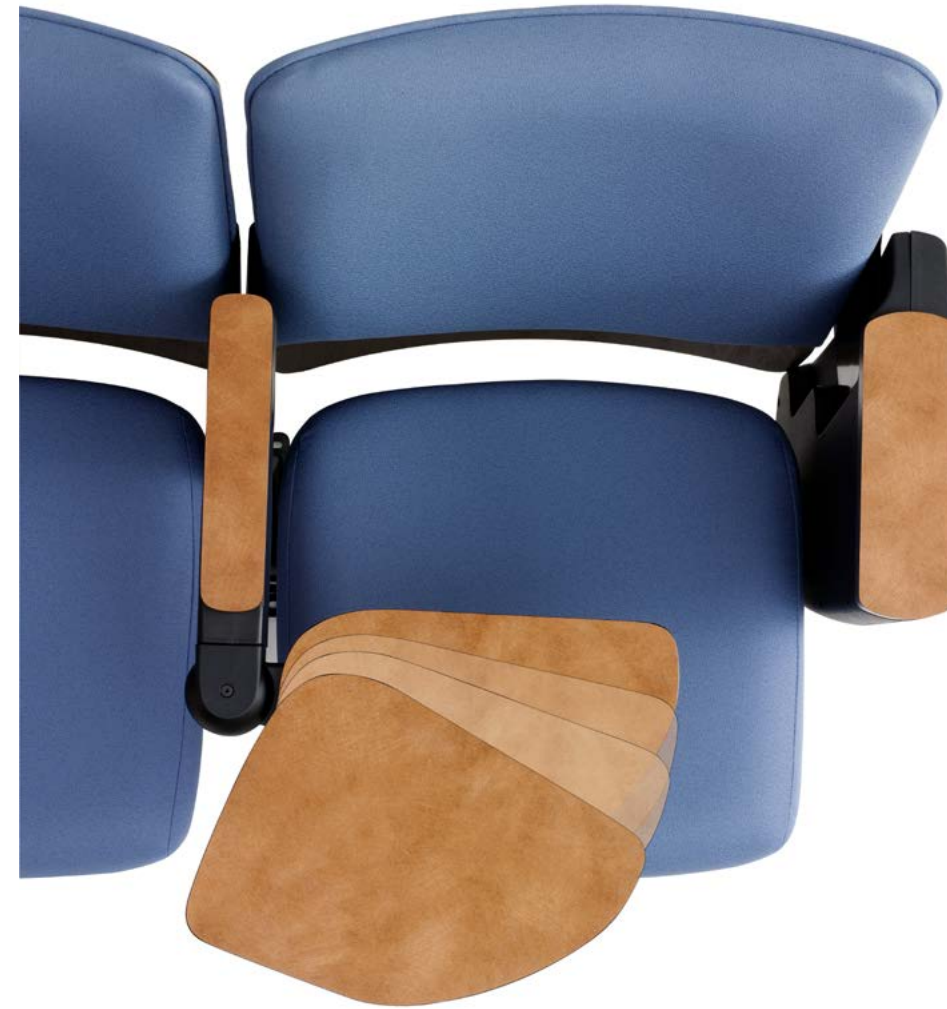
E-Link system with 120v plugs



Custom Embroidery



E-Link system with USB-B charging ports



X-Large (151 sq. in.)



Large (120 sq. in.)



Regular (100 sq. in.)



Small (83 sq. in.)

## Writing Tablets

The flexibility of the No. 4 chair platform extends to its accessories, and none illustrate this better than our self-storing tablet arm assembly. Available in four sizes, this tablet arm features a built-in, anti-panic mechanism for quick, easy storage under the armrest and a unique feature that allows the user to move the tablet in and out and place it into an optimal position for them. While these features are nice, they mean nothing if the assembly is not durable. Based on our testing (and thousands of installations), we know of no other self-storing writing tablet as strong as this one.

# Where People Come Together

## Model Numbering:

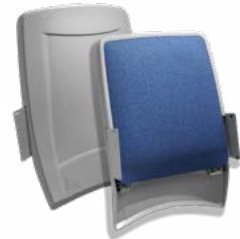


## We begin with you

Working with Irwin means having your choice of seating components. From the back to the aisle panel to the seat itself, we collaborate closely to ensure every detail brings your design vision to life.



## Chair Backs



- No. 90 Citation**
- Injection molded rear panel
  - 2" poly foam
  - Tufting available
  - Lumbar support available



- No. 91 Millennium**
- Injection molded rear panel
  - 2" poly foam
  - Tufting available
  - Lumbar support available



- No. 51 Marquee**
- Injection molded rear panel
  - 2" poly foam
  - Tufted cover
  - Ergonomically formed



- No. 1 Crusader**
- Non-upholstered back
  - Formed from 7-ply hardwood
  - Exposed fasteners
  - Available with extended kick plate



- No. 6 Century PAC**
- Veneer, laminate or upholstered rear panel
  - 2" poly foam, 3" available
  - 1-piece cover (2-pc available)
  - Concealed fasteners



- No. 8 Meteor**
- Veneer or laminate rear panel
  - 2" poly foam
  - 1-piece cover
  - Exposed fasteners



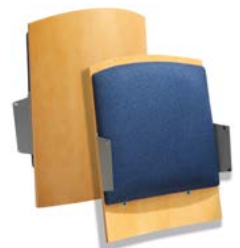
- No. 10 Grand Rapids**
- Veneer rear panel with matching face reveal
  - 2" poly foam
  - 1-piece cover
  - Concealed fasteners



- No. 11 Springfield**
- Veneer rear panel with matching face reveal
  - 2" poly foam
  - 1-piece cover
  - Concealed fasteners



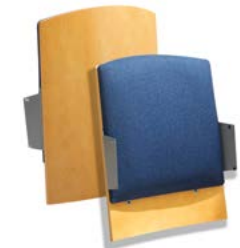
- No. 17 Davies**
- Veneer, laminate or upholstered rear panel
  - 2" poly foam, 3" available
  - 1-piece cover
  - Concealed fasteners



- No. 27 Allegro**
- Veneer rear panel with matching face reveal
  - 2" poly foam, 3" available
  - 1-piece cover
  - Concealed fasteners
  - High back available



- No. 29 Rialto**
- Veneer or laminate rear panel
  - 2" poly foam, 3" available
  - 1-piece cover
  - Exposed fasteners



- No. 37 Andante**
- Veneer rear panel
  - 2" poly foam, 3" available
  - 1-piece cover
  - Concealed fasteners
  - High back available



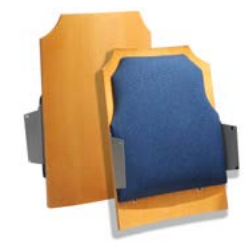
- No. 52 Marquee**
- Veneer rear panel
  - Tufted cover
  - 2" poly foam
  - Concealed fasteners
  - Ergonomically formed



- No. 53 Marquee**
- Upholstered rear panel
  - Tufted cover
  - 2" poly foam
  - Concealed fasteners
  - Ergonomically formed



- No. 69 Emerson**
- Veneer rear panel with matching face reveal
  - 2" poly foam
  - 1-piece cover
  - Exposed fasteners



- No. 81 Oriental**
- Veneer rear panel with matching face reveal
  - 2" poly foam
  - 1-piece cover
  - Concealed fasteners



- No. 82 Orpheum**
- Veneer, laminate or upholstered rear panel
  - 2" poly foam
  - 1-piece cover
  - Concealed fasteners



- No. 83 New Amsterdam**
- Veneer rear panel with matching face reveal
  - 2" poly foam
  - 1-piece cover
  - "Tall" back with concealed fasteners

## Seats



- No. 12 Seat**
- Composite seat foundation
  - 3" poly foam (4" loge available)
  - Available with serpentine spring or ergonomic substrate construction



- No. 20 Wood Bottom Seat**
- Composite seat foundation, 3" poly foam with an ergonomic substrate
  - Enclosed in a tailored cover
  - 5-ply, veneer surfaced panel



- No. 21 Fully Upholstered Seat**
- Composite seat foundation wrapped in fabric
  - 3" poly foam (4" loge available)
  - Available with serpentine spring or ergonomic substrate construction



- No. 6 Seat**
- Steel seat pan
  - Serpentine spring support
  - 3" poly foam (4" loge available)
  - Available with acoustical perforations and sound absorption pad



- No. 14 Crusader Seat**
- Self-rising, 7-ply hardwood plywood seat
  - Surfaced with wood veneer
  - Available with 11-ply hardwood veneer



- No. 15 Upholstered Crusader Seat**
- Self-rising, 7-ply hardwood plywood seat
  - Upholstered over 3" poly foam with decorative welt
  - Available with upholstered bottom cover



- No. 17 Allegro Wood Bottom Seat**
- Gravity-lift, 8-ply hardwood plywood seat
  - Upholstered over 3" poly foam
  - Available with decorative solid hardwood edge banding to conceal plies

## Aisle Panels



**No. 14 Inclined Full**

- Traditional aisle end panels available on the Nos. 4, 8, 12 and 17 platforms
- Panels are constructed from 3/4", 45 lb medium density fiberboard
- Surfaced with plastic laminate or wood veneer



**No. 17 Radiused**



**No. 56 Rounded Corner**



**No. 60 Rectangular**

- Seven of eight panels are available with a 1-3/4" block front (veneer only)
- Actual dimensions may differ slightly between platforms
- Some limitations in compatibility exist, contact your representative for details



**No. 66 Rounded**



**No. 74 Full**



**No. 86 Keystone**



**No. 80 Crescent**



**No. 00 Open**

- For use on the No. 4 platform only
- Engineered polymer armrest support
- Decorative seat landing bracket cover



**No. 10 Enclosed**

- For use on the No. 4 platform only
- Polymer aisle panel with veneer, laminate or upholstered insert panel

## Chair Platforms



- No. 4 Steel Platform**
- Inclined steel column with formed foot
  - Robotic welded
  - Engineered polymer armrest support
  - Floor or riser mounting



- No. 8 Steel Platform**
- 1" x 3" steel standards
  - Formed foot
  - Floor or riser mounting



- No. 12 Cast Iron Platform**
- Cast iron standards
  - Class 30 grey iron
  - Floor or riser mounting



- No. 17 Allegro Platform**
- Steel standards with a formed foot
  - Floor or riser mounting
  - Available for use with the No. 17 Wood Bottom Seat only



# Let's Collaborate

From Carnegie Hall to your local high school auditorium, every project is significant to us. If you have a project in the works, we would love to discuss your design goals.

## **Seating Division**

3251 Fruit Ridge Ave. NW  
Grand Rapids, MI 49544  
Phone: 866-464-7946  
Fax: 616-574-7411  
E-mail: [sales@irwinseating.com](mailto:sales@irwinseating.com)  
[www.irwinseating.com](http://www.irwinseating.com)

## **Telescopic Division**

610 East Cumberland Road  
Altamont, IL 62411  
Phone: 618-483-6157  
Fax: 618-483-5539

Back heights & sizes shown are nominal and actual dimensions will vary based on back pitch and chair platform.

Specifications, dimensions, chair models and color selections may change without notice, for the most up to date information contact your Irwin Seating Company sales manager or go to [www.irwinseating.com](http://www.irwinseating.com).

Color selections for many of the models shown in this catalog can be found at [www.irwinseating.com](http://www.irwinseating.com).

Printed in USA

© 2022 Irwin Seating Company, Grand Rapids, Michigan