

WORSHIP SEATING

Irwin Seating Company



The Irwin Difference

For over 100 years, Irwin Seating Company's focus has been on meeting our customers' need for comfortable, stylish and reliable auditorium / theater seating. We are proud of our heritage as an innovative, family-owned company who still manufactures products in the United States.

We understand that the unique design of each space means what worked well on one project may not work for another. So we start by asking questions, listening closely to the answers and then tailoring a solution for your specific needs. Our experience and expertise will assist you in every phase of your project; from initial chair selection and budget evaluation to layout / design through chair installation and beyond.

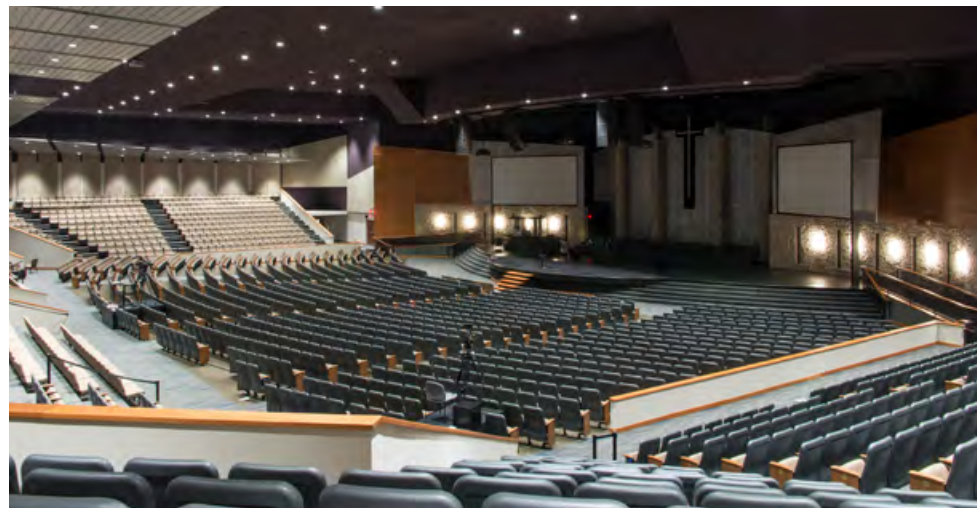
We recognize the importance of stewardship and understand seating must be reliable, easy to maintain and comfortable for years to come. Our chairs embody this understanding with quiet, comfortable components that are virtually maintenance-free, the use of engineered, impact resistant polymers, heavy gauge steel, and fabrics that pass the industry's most stringent tests.

Our service is as strong and reliable as our seating. Every person at Irwin Seating Company is focused on meeting customer needs at every stage of the project. Finally, with our Midwest manufacturing plants, we can easily provide parts and restoration services to make sure everything stays functional for as long as your chairs are in use.

Talk with your Irwin Seating representative today and experience the Irwin Difference.



Harvest Bible Chapel - Spring Lake, Michigan



Calvary Church - Naperville, Illinois



Journey Church - Kenosha, Wisconsin



Lawton First Assembly - Lawton, Oklahoma

The Irwin Difference

Every facility is unique in design and appearance, so we design our products in a modular fashion to put choice into your hands. We manufacture over 40 different backs, eight different seats and dozens of aisle panels and accessories. We've included our many popular components here, but others can be found at www.irwinseating.com.



CHAIR BACKS [No. 51 MARQUEE]

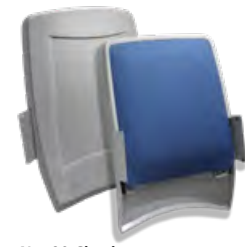
SEATS [No. 12]

AISLE END PANEL [No. 10]

CHAIR PLATFORM [No. 4]

(based on center standard)

Model: 51.12.10.4 Marquee



- No. 90 Citation**
- Injection molded rear panel
 - 2" poly foam
 - Available with tufted cover
 - Lumbar support available



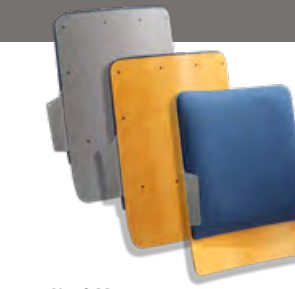
- No. 91 Millennium**
- Injection molded rear panel
 - 2" poly foam
 - Available with tufted cover
 - Lumbar support available



- No. 51 Marquee**
- Injection molded rear panel
 - 2" poly foam
 - Tufted cover
 - Ergonomically formed



- No. 6 Century PAC**
- Veneer, laminate or upholstered rear panel
 - 2" poly foam, 3" available
 - 1-piece cover (2-pc available)
 - Concealed fasteners



- No. 8 Meteor**
- Veneer or laminate rear panel
 - 2" poly foam
 - 1-piece cover
 - Exposed fasteners



- No. 10 Grand Rapids**
- Veneer rear panel with matching face reveal
 - 2" poly foam
 - 1-piece cover
 - Concealed fasteners



- No. 17 Davies**
- Veneer, laminate or upholstered rear panel
 - 2" poly foam, 3" available
 - 1-piece cover
 - Concealed fasteners



- No. 22 Saturn**
- Veneer or laminate rear panel
 - 2" poly foam
 - 1-piece cover
 - Exposed fasteners



- No. 27 Allegro**
- Veneer rear panel with matching face reveal
 - 2" poly foam, 3" available
 - 1-piece cover
 - Concealed fasteners
 - High-back available



- No. 37 Andante**
- Veneer rear panel
 - 2" poly foam, 3" available
 - 1-piece cover
 - Concealed fasteners
 - High-back available



- No. 52 Marquee**
- Veneer rear panel
 - Tufted cover
 - 2" poly foam
 - Concealed fasteners
 - Ergonomically formed



- No. 53 Marquee**
- Upholstered rear panel
 - Tufted cover
 - 2" poly foam
 - Concealed fasteners
 - Ergonomically formed



- No. 89 Fellowship**
- Veneer or upholstered rear panel
 - 2" poly foam with tufted cover
 - Ergonomically formed
 - Concealed fasteners
 - Available for the No 43 or 44 chair platforms only



- No. 6 Seat**
- Steel seat pan
 - Serpentine spring support
 - 3" poly foam (4" loge available)
 - Available with acoustical perforations and sound absorption pad



- No. 12 Seat**
- Plastic seat foundation
 - 3" poly foam (4" loge available)
 - Available with serpentine spring or ergonomic substrate construction



- No. 21 Fully Upholstered Seat**
- Plastic seat foundation
 - 3" poly foam (4" loge available)
 - Available with serpentine spring or ergonomic substrate construction



No. 17 Radius



No. 56 Rounded Corner



No. 60 Rectangular



No. 66 Rounded



No. 74 Full



No. 86 Keystone



No. 34 Tear Drop



No. 80 Crescent



No. 00 Open

- For use on the No. 4, 43, 44 platforms
- Engineered polymer armrest support
- Decorative seat landing bracket cover



No. 10 Enclosed

- For use on the No. 4, 43, 44 platforms
- Polymer aisle panel with veneer, laminate or upholstered insert panel



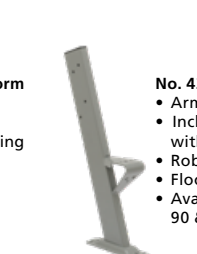
- No. 4 Steel Platform**
- Inclined steel column with formed foot
 - Robotic welded
 - Engineered polymer armrest support
 - Floor or riser mounting



- No. 8 Steel Platform**
- 1" x 3" steel standards
 - Formed foot
 - Floor or riser mounting



- No. 12 Cast Iron Platform**
- Cast iron standards
 - Class 30 grey iron
 - Floor or riser mounting



- No. 43 Armless Platform**
- Armless center standard
 - Inclined steel column with formed foot
 - Robotic welded
 - Floor or riser mounting
 - Available with Nos. 89, 90 & 91 backs only



- No. 44 FUA Platform**
- Flip-up armrest center standard
 - Inclined steel column with formed foot
 - Robotic welded
 - Floor or riser mounting
 - Available with Nos. 89, 90 & 91 backs only

Accessories & Options

It's often said details are what distinguish one project from another, so we offer a wide array of accessories designed specifically to help add those final touches of function, comfort and beauty. Availability varies by chair platform, please visit irwinseating.com or consult with your Irwin Seating Company representative for specifics.



Cantilever Steel Standards



Riser Mount Steel Standards



Bariatric Chair



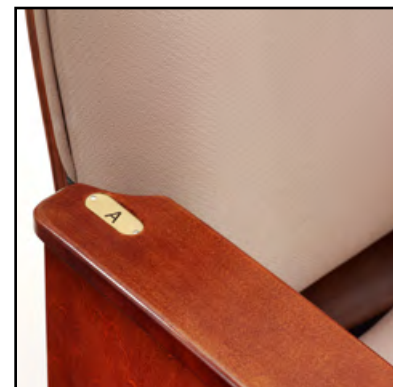
Caddy III Book Box



Seat Attached Book Box



No. 92 ADA Aisle Standard



Oval Row Letter Plate (bronze)



Round Row Letter Plate (aluminum)



Oval Seat Number Plate (bronze)



Beacon LED Aisle Light



Focal LED Aisle Light



Concealed LED Aisle Light



Standard Armrest (stained or surfaced with laminate)



Comfort Curved Wood Armrest †



Comfort Curved Polymer Armrest † (available in all plastic colors)



Rounded Wood Armrest ‡



Scrolled Wood Armrest ‡



Blow-Mold Plastic Armrest ‡ (black only)



Swing-Away Aisle Standard



Movable Base



Easeway Movable Base



Donor Plate



Rear Mount & Cupholder Arms



Lumbar Support Structure



Veneer Seat Insert



Upholstered Seat Insert



Foot Shroud (No. 4 platform only)

Caddy II Envelope Holder

Trim Area for Gate Fold

Fellowship



Fellowship is an attractive and versatile back. The back is formed with a compound curve for superior comfort. This back can be provided with a veneer surfaced or fully upholstered rear panels and is available in three heights – 34”, 38” or 41”. Fellowship is provided with a tufted cover for a crisp, tailored look and it’s available with the 43 & 44 chair platforms only.



- 89.12.66.44 Fellowship**
- No. 89 Fellowship back with veneer surfaced rear panel and tufted cover
 - No. 12 seat with suspension substrate
 - No. 66 veneer surfaced aisle panel
 - No. 44 chair platform with flip-up, comfort curved solid hardwood armrests and non-invasive center standard

Mishawaka First Baptist Church - Mishawaka, Indiana



- 89.12.34.44 Fellowship**
- No. 89 fully upholstered Fellowship back with integral formed lumbar support and tufted cover
 - No. 12 seat with ergonomic substrate
 - No. 34 veneer surfaced aisle panel formed with a lateral curve
 - No. 44 chair platform with flip-up hardwood armrests and non-invasive center standard

Bethel World Community Church - Brentwood, Tennessee



Citation

Citation backs are designed with a traditional rectangular shape and nominal 34" back height. Backs are assembled with 5-ply hardwood inner panels, polymer rear panels available in 15 standard colors and concealed attachment wings. Citation backs are available with optional tufted covers and our innovative molded polymer lumbar support structure for added comfort. Citation is available on steel or cast iron standards and with a variety of aisle end panels and armrests.



Moberly Baptist Church - Longview, Texas



- 90.12.86.43 Citation**
- No. 90 Citation backs
 - No. 12 seat with ergonomic substrate
 - No. 86 veneer surfaced aisle panel with solid Maple armrest
 - No. 43 armless chair platform with non-invasive center standard



- 90.12.10.4 Citation**
- No. 90 Citation backs
 - No. 12 seat with ergonomic substrate
 - No. 10 enclosed aisle end standards with laminate insert panel and LED aisle light
 - No. 4 chair platform with laminate surfaced armrests



- 90.12.74.4 Citation**
- No. 90 Citation backs
 - No. 12 seat with ergonomic substrate
 - No. 74 veneer surfaced aisle end panel
 - No. 4 chair platform with comfort-curved solid hardwood armrests

Kroc Center, Perry Chapel - Norfolk, Virginia



Millennium



Fellowship Bible Church – Little Rock, Arkansas

Millennium backs feature an elegant rounded top with a nominal 34" back height. Backs are assembled with 5-ply hardwood inner panels, polymer rear panels available in 15 standard colors and concealed attachment wings. Millennium is available with optional tufted covers and an innovative molded polymer lumbar support structure for added comfort.



91.12.66.4 Millennium

- No. 91 Millennium backs
- No. 12 seat with ergonomic substrate
- No. 66 laminate surfaced aisle panel with cantilevered mounting foot
- No. 4 chair platform with laminate surfaced, solid hardwood armrests

Weiss High School - Pflugerville, Texas



91.12.10.43 Millennium

- No. 91 Millennium backs
- No. 12 seat with ergonomic substrate
- No. 10 aisle end panel with laminate insert and polymer armrests
- No. 43 armless chair platform with non-invasive center standard



Marquee



The 5-ply hardwood inner panels for Marquee backs are formed with integral lumbar support for exceptional comfort. The No. 51 back is provided with a polymer rear panel, the No. 52 Marquee back is surfaced with wood veneer and the No. 53 features an upholstered rear panel. Marquee backs are tufted for a refined, crisp appearance and have a nominal 36" height. Marquee is available on steel or cast iron standards and with a variety of aisle end panels and armrests.

51.12.17.4 Marquee

- No. 51 Marquee back with integral formed lumbar support
- No. 12 seat with ergonomic substrate
- No. 17 veneer surfaced aisle panel with block front
- No. 4 chair platform with comfort-curved solid hardwood armrests, row letter & seat number plates and concealed aisle lights



51.12.00.4 Marquee

- No. 51 Marquee backs with integral formed lumbar support
- No. 12 seat with serpentine spring substrate
- No. 00 open aisle end standards
- No. 4 chair platform with comfort-curved solid hardwood armrests

Bonita Valley Community Church — Bonita, California



Jacksonville First Baptist Church — Jacksonville, Florida

51.12.10.4 Marquee

- No. 51 Marquee back with integral formed lumbar support
- No. 12 seat with ergonomic substrate
- No. 10 aisle panel with upholstered insert panel
- No. 4 chair platform with comfort-curved solid hardwood armrests



Meteor

Gold Canyon United Methodist - Gold Canyon, Arizona



Rear panels for the No. 8 Meteor are attached with exposed, tamper resistant fasteners. Meteor backs are formed with a rectangular shape with eased corners. Both Meteor and Saturn can be supplied in a number of configurations to help support the aesthetic design of the facility



- 8.12.56.4 Meteor**
- No. 8 laminate surfaced Meteor backs
 - No. 12 seat with ergonomic substrate
 - No. 56 veneer surfaced aisle end panel with 2" round row letter plates
 - No. 4 chair platform with solid hardwood armrests

Saturn

Brooklyn Tabernacle - Brooklyn, New York



Like the Meteor and No. 22 Saturn backs can be surfaced with wood veneer or laminate and are provided with a decorative welt around the perimeter of the back. Saturn backs feature a gentle radius. Nominal back height for Meteor and Saturn is 32" above a level floor.



- 22.12.86.4 Saturn**
- No. 22 veneer surfaced Saturn backs with tamper-resistant exposed fasteners
 - No. 12 seat with ergonomic substrate
 - No. 86 veneer surfaced aisle end panel
 - No. 4 chair platform with solid hardwood armrests and row letter / seat number plates

Telescopic Seating



Northwest High School - Jackson Michigan

Integra Seating:

The use of retractable systems in multi-purpose rooms continues to grow in popularity. Integra has the appearance, comfort and durability required in performance or multi-use spaces. The Integra beam mount system sets a new standard for functionality with the choice of manual or semi-automatic chair operation — both options reduce operation times and require minimal effort. For safety and ease of cleaning, the chair fold-down mechanisms are supplied with an attractive and protective dust / debris cover. To ensure durability, Integra has been engineered to meet all standard industry requirements for spectator seating as well as our own, more rigorous internal testing.

VersaTract is the most VERSAtile reTRACTable seating system available. This innovative telescoping seating system provides an incredibly stable walking surface and unmatched performance and reliability. We're so confident in the design, materials and construction of VersaTract it's backed by the industry's best warranty - 10 YEARS!

Talk with your Irwin Seating representative today and find out if Integra and VersaTract is the right choice for your facility.



Arizona Ballet - Phoenix, Arizona



Spring Hill High School - Chapin, South Carolina



First Presbyterian Church - Houston, Texas

Prestige Seating:

Prestige is the best of two worlds; the comfort of auditorium-style backs and seats on our VersaTract telescopic system. Prestige is a great choice for facilities needing high-end seating in a flexible space. Prestige is available with our most popular backs and seats and provides the same level of comfort and stability you've come to expect from Irwin Seating Company.

To accommodate row rise conditions, Prestige is available with either a nose-mount or forward-fold mechanism. Operation of the Prestige Series is made quick and simple with unique spring assist mechanisms to aid in the storage and deployment of the chairs. This innovative design greatly reduces setup and take-down times, while increasing the overall customer value.

The VersaTract system provides an incredibly stable walking surface for patrons and a easy, reliable operation for the staff having to setup or store the system for different events.



Jenny Wiley Theatre - Pikeville, Kentucky



Grace Community Church - Auburn, California



† available on the No. 4 chair platform only

‡ available on the Nos. 8 and 12 chair platforms only

Back heights & sizes shown are nominal and actual dimensions will vary based on back pitch and chair platform. Specifications, dimensions, chair models and color selections may change without notice, for the most up to date information contact your Irwin Seating Company sales manager or go to www.irwinseating.com. Color selections for many of the models shown in this catalog can be found at www.irwinseating.com.

Seating Division

3251 Fruit Ridge Ave. NW
Grand Rapids, MI 49544
Phone: 866-464-7946
Fax: 616-574-7411
E-mail: sales@irwinseating.com
www.irwinseating.com

Telescopic Division

610 East Cumberland Road
Altamont, IL 62411
Phone: 618-483-6157
Fax: 618-483-5539



Irwin Seating Company is proud to print this brochure on Forest Stewardship Council certified paper. FSC certification ensures that the paper used here contains fiber from well-managed and responsibly harvested forests that meet strict environmental and socioeconomic standards.