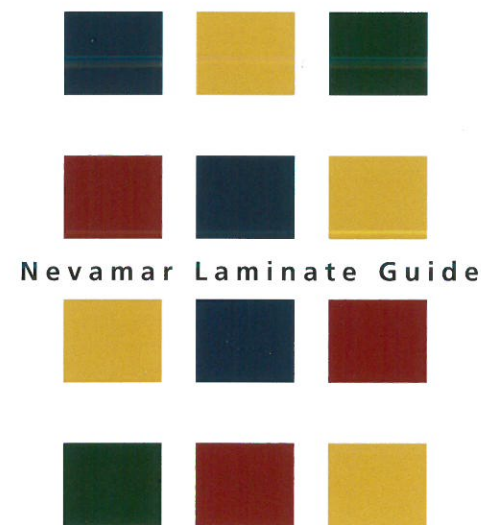




Dedicating ourselves to customer satisfaction, employee well being, and profitable growth.



Nevamar Laminate Guide

Laminate Standards:

Nevamar is a high-pressure decorative laminate available in solid colors, woodgrains and patterns for interior use on vertical and horizontal surfaces. It is applied where a decorative wear, heat and stain resistant surface is required.

The laminates shown in this guide have been reproduced using the latest in 4-color printing technology under controlled lighting. Different lighting conditions may affect the appearance of these colors. If an exact color match is required, you should obtain sample chips from your Irwin Seating Company representative. It is recommended that color selections be evaluated using sample chairs in the same environment and lighting conditions that the seating will be installed in.

Laminate surfaced products have lacquered edges to match the dominant color in the laminate. For a sample please contact your representative or the factory. Lecture room tables and modesty panels are not lacquered and finished as required with a variety of materials.

Horizontal Surfaces:
Thickness: H-4 (HGL) Grade = 0.039" (± .005); (1.0 mm ± .12)

Nevamar brand laminate H-4 (HGL) Horizontal Grade is manufactured to meet or exceed the requirements of ANSI/NEMA publication LD 3 current edition. American National Standard Performance Standards for Fabricated High Pressure Decorative Laminate Countertops ANSI A 161 2-1998 (Sponsored by National Association of Plastic Fabricators).

Vertical Surfaces:
Thickness: 0.028" (± .004); 0.7 mm (± .10)

Nevamar brand laminate VF-3 (VGP) Vertical Forming Grade is manufactured to meet or exceed the requirements of ANSI/NEMA publication LD 3 current edition. American National Standard Performance Standards for Fabricated High Pressure Decorative Laminate Countertops ANSI A 161 2-1998 (Sponsored by National Association of Plastic Fabricators).

Nevamar meets or exceeds performance standards published in the National Electrical Manufacturers Association's (NEMA) Standards Publication No. LD-3-2000.

Additional technical specifications can be found at www.nevamar.com.

Irwin Seating Company

3251 Fruit Ridge Ave. NW
Grand Rapids, MI 49544
Phone: 866-464-7946
Fax: 616-574-7411
E-mail: sales@irwinseating.com
www.irwinseating.com

Irwin Telescopic Seating Company

P.O. Box 320
Altamont, IL 62411
Phone: 618-483-6157
Fax: 618-483-5539
E-mail: itsc-sales@irwinseating.com



Irwin Seating Company is proud to print this brochure on Forest Stewardship Council® certified paper. FSC® certification ensures that the paper used here contains fiber from well-managed and responsibly harvested forests that meet strict environmental and socioeconomic standards.

IRWIN SEATING COMPANY



S6053T
Jett Black



MR6002T
Charcoal Matrix



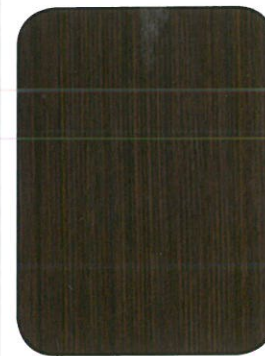
FS6001T
Rush



VA5002T
Easy Elegance



WK0024T
Palazzo



WZ0028PV
Kona Blend



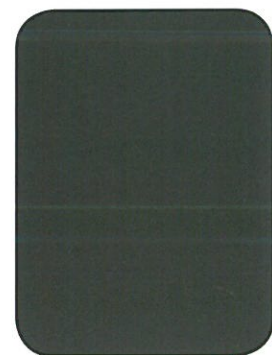
WS9450N/MG
Royal Mahogany



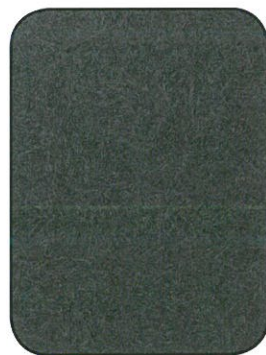
W8371T
Grand Island Maple



WZ0005N/MG
Recon Oak



S6054T
Wrought Iron



VS6001T
Vous Metal



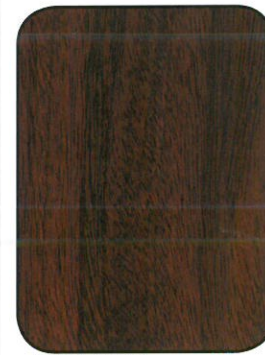
S6027T
Maritime Gray



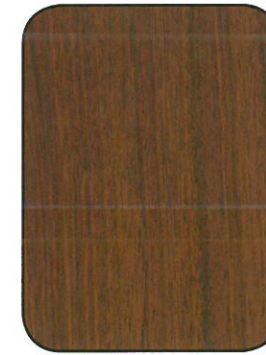
MXT003T
Silver Alu Metalx



WM0047T
Iconic Maple



W8343PV
Crest Mahogany



W8352V
Regency Mahogany



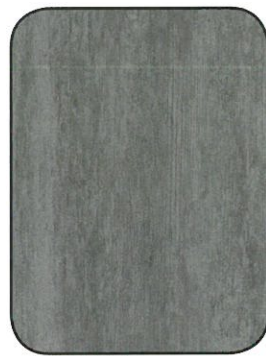
WM8350T
Carmel Sagawood



WF0002E/SD
Washington Apple



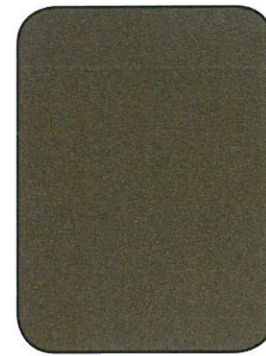
ALT005T
Wall Street Allusion



WZ0057T
Calypso



EM6001T
Aged Elements



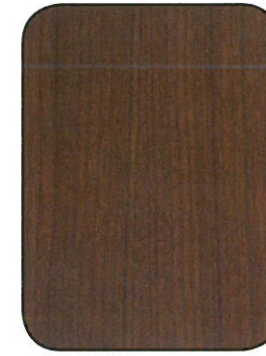
VS2002T
Vanilla Bean



VS2001T
Vois Fawn



WF0011T
Macchiato



W8294T
Crown Cherry



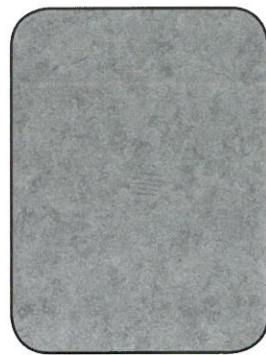
W8325T
Sovereign Cherry



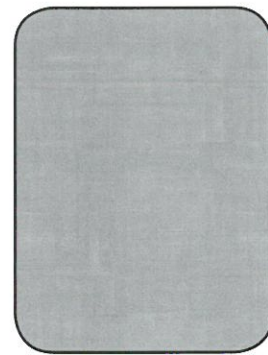
W8340T
Clear Maple



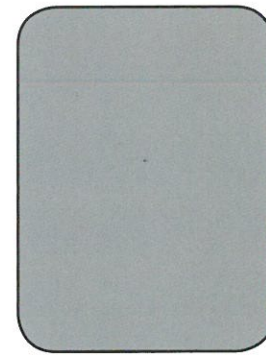
ALT001T
Tropical Allusion



AM6001T
Aluminite



LN6001T
Frappe



AG8000SD
Silver Dollar



WZ0054T
Breve



WZ6001T
Dry Creek Plum Tree



W8369T
Topaz Khayawood



WZ0003T
Tawny Satinwood



WM5528E/SD
Vermont Maple