

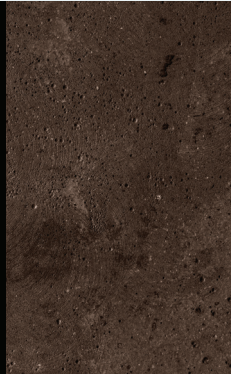
# HYDROSTAIN

## DECORATIVE INTERIOR CONCRETE STAIN

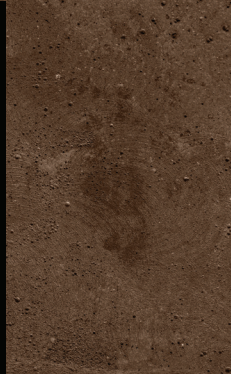
MAPLE SPRING



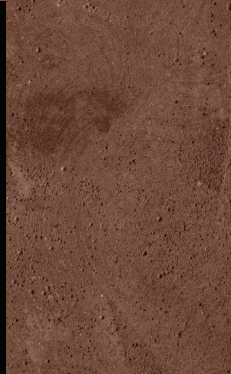
RIVERBANK



BAYOU



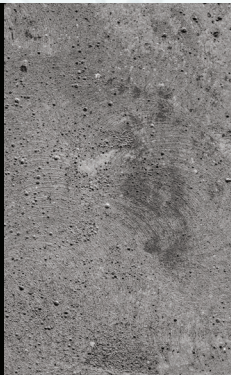
COPPER CREEK



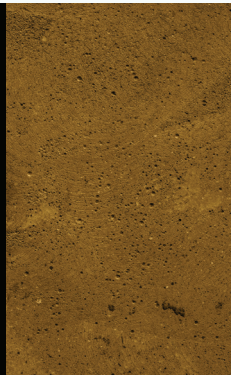
SEA GLASS



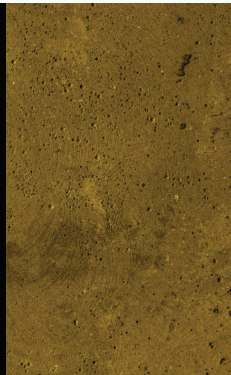
OTTER STONE



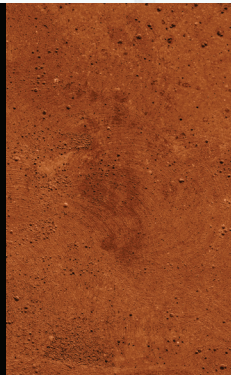
KELP FOREST



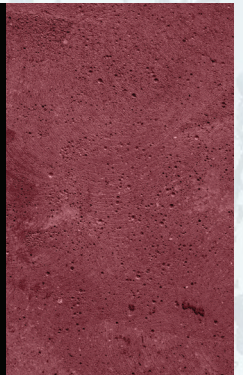
GOLDEN CAY



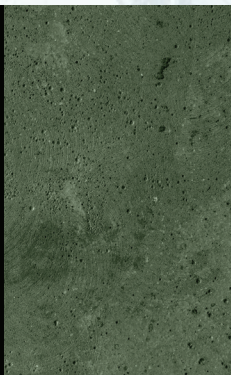
AUTUMN COVE



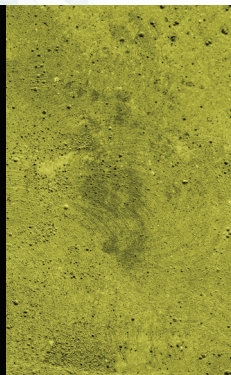
CORAL BLOOM



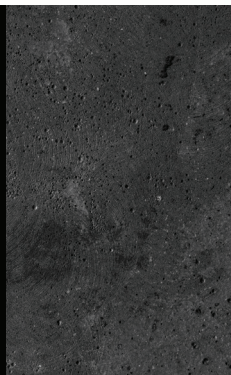
WATERCRESS



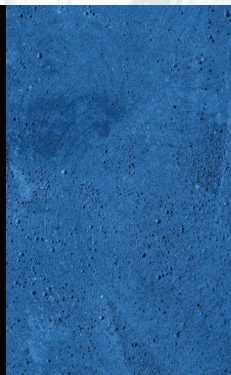
LILY PAD



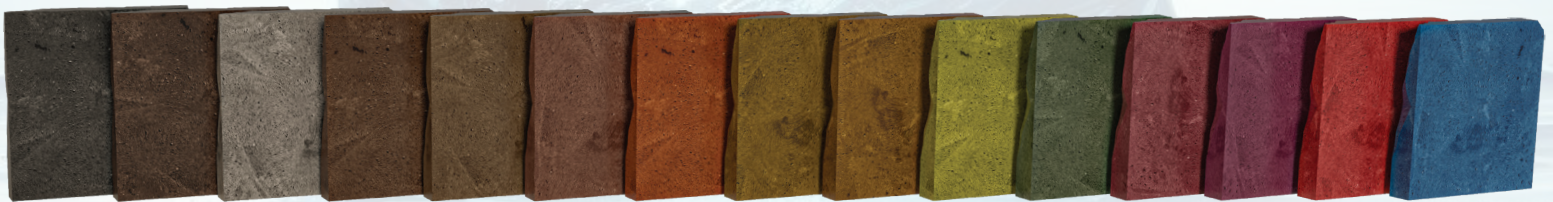
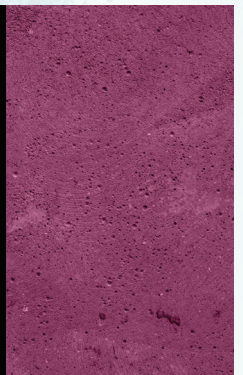
TYPHOON



TIDEPOL



LOTUS



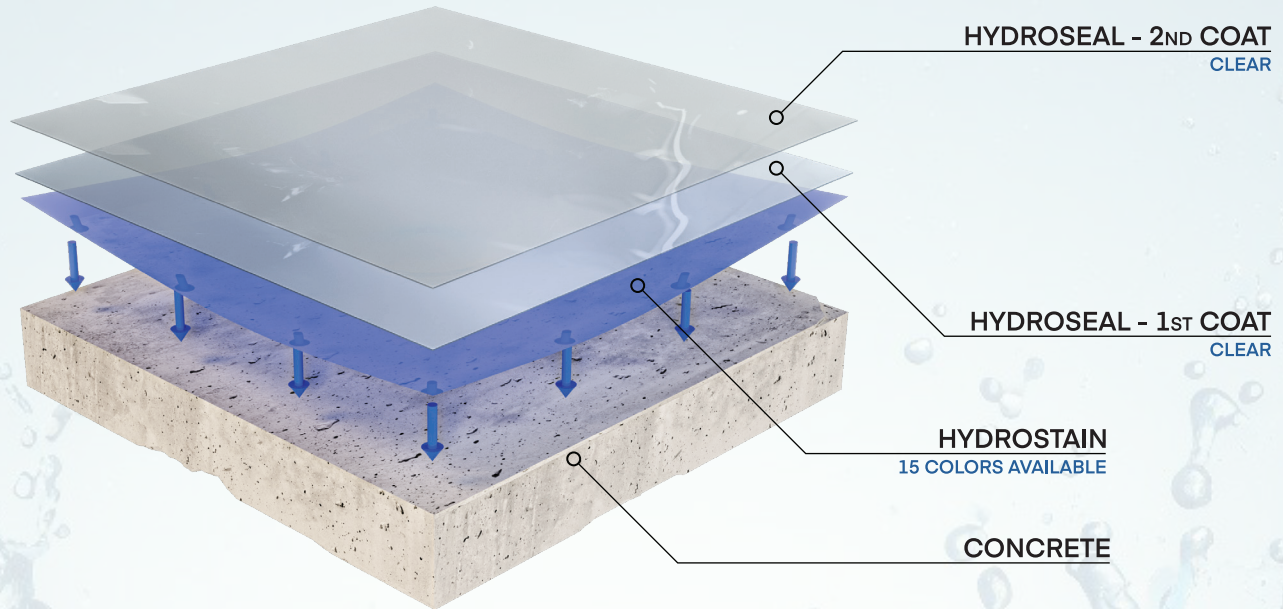
### ATTENTION

Chart is for reference only: Color variations are typical of transparent concrete dye. Final color selections must be determined with on-site system samples. For interior use only.



# HYDROSTAIN

## DECORATIVE INTERIOR CONCRETE STAIN



HydroStain is a penetrating concrete dye crafted to highlight and enhance the natural beauty of interior concrete surfaces with a rich, transparent finish. Unlike surface-level stains that can interfere with sealer adhesion, HydroStain penetrates deep into the concrete's pores to ensure a strong bond while allowing the natural variegated look of the concrete to show.

Once the dye dries to the touch, you're ready to apply HydroSeal, our clear, waterborne epoxy sealer, to lock in the color and provide a durable, long-lasting finish. This complete system lets you transform your space in just one day!

- Variegated look
- Enhances natural beauty of concrete
- Conveniently dilutes with water or acetone
- Stain and seal in one day
- Penetrating dye
- 8 oz concentrate (makes 1-gallon)
- Coverage rate 400 - 800ft<sup>2</sup> per gallon (depending on porosity)



### ATTENTION

Chart is for reference only: Color variations are typical of transparent concrete dye. Final color selections must be determined with on-site system samples. For interior use only.