



Leading in Times of Change





Welcome & Ice Breaker





Inclusion & Cultural Intelligence

- Global Mindset
- Inclusive Leadership
- National Cultural Dimensions



Global mindset

CURIOSITY

RESPECT

EMPATHY



THE STAGES - GLOBAL MINDSET

CURIOSITY

learn

seek

appreciate



GLOBAL MINDSET

CURIOSITY

learn
seek
encourage

RESPECT

remember
commit
acknowledge



GLOBAL MINDSET

CURIOSITY

learn
seek
encourage

RESPECT

remember
commit
acknowledge

EMPATHY

realize
understand
apologize





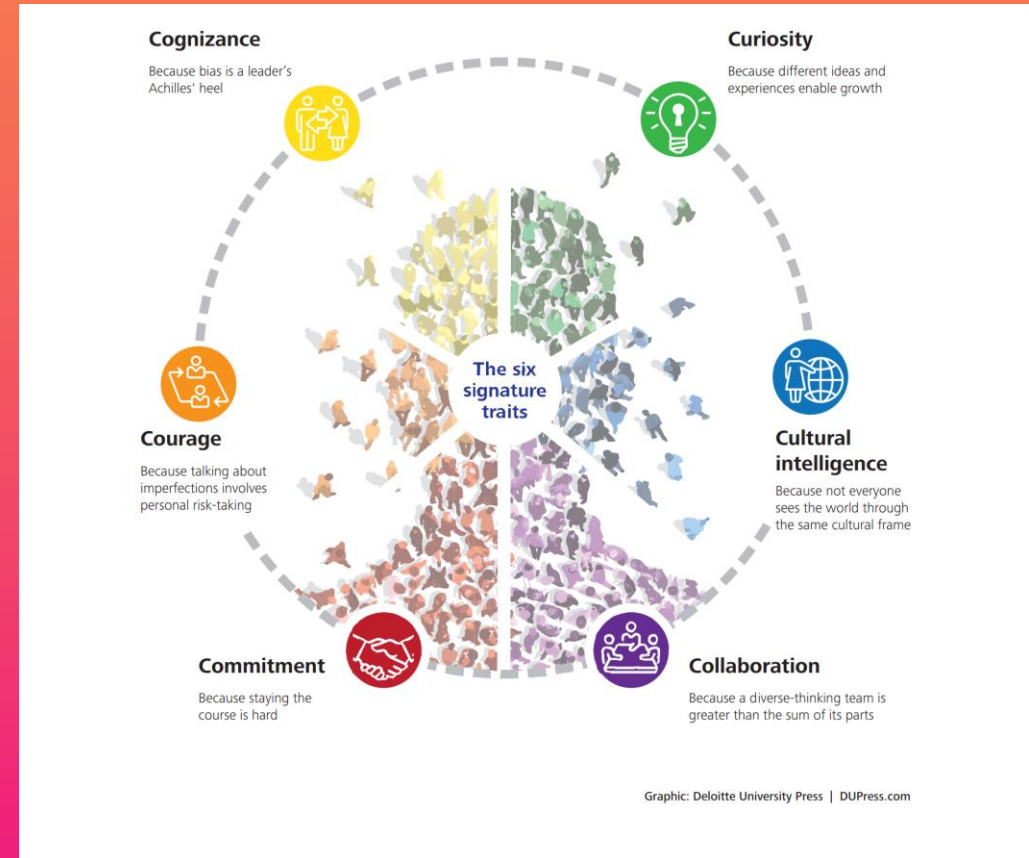
INCLUSIVE LEADERSHIP TRAITS

- What is a leadership trait that you admire in a leader (living or dead). Why?





INCLUSIVE LEADERSHIP TRAITS





What is culture?





- A way of life of a group of people, the behaviors, norms, beliefs, values and symbols that they accept without thinking about them, and that are passed along by communication and imitation from one generation to the next.
- Explicit culture
- Implicit culture



National Culture Dimensions

Individualism



Lower Power Distance



High Uncertainty
Avoidance



Tough



Time Dimension (Precise
vs. Loose)

Collectivism



Higher Power Distance



Low Uncertainty
Avoidance



Tender



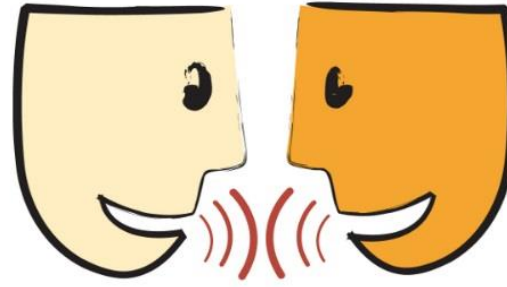
Time Dimension
(Sequential vs. Synchrony)



CASE STUDIES

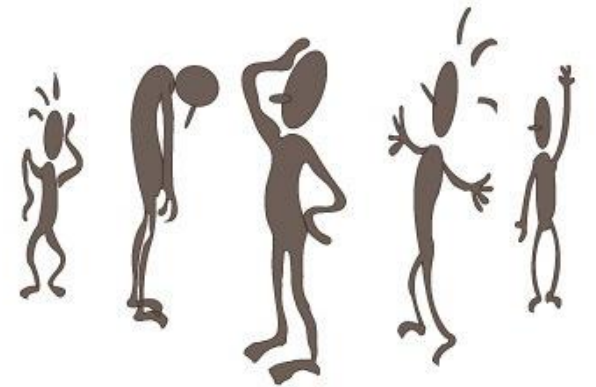


VERBAL COMMUNICATION



DISCUSSION

NON-VERBAL COMMUNICATION





cuisine

books

travel

similar interests

language





age

economic level

nationality

religion

political affiliation



Wangari

Kamau

GPHR, MSc



info@somaglobalconsulting.com



Wangari Kamau



Somaglobalconsulting.com



