

# CS CONTINUING EDUCATION PROGRAMS



## Never stop learning.

We share our experience and expertise through our CES-registered courses.

Our presenters offer participants valuable insight into the direction of our industry by exploring common issues and pragmatic considerations for performance, maintenance, sustainability and more.

All presenters are highly knowledgeable in the practical and technical aspects of the presented subject matter. Schedule requirements and availability are flexible. Refer to the following course descriptions for topic details and credit hours.

**Contact us to schedule a  
CES-registered presentation**

**Call us:** 800.233.8493

**Email us:** [SalesOps@c-sgroup.com](mailto:SalesOps@c-sgroup.com)



**Construction Specialties™**

*Making Buildings Better™*

## Acrovyn® Doors



### Interior Doorways: Life Extension Through Design

Architects  
Program Number: DOORS2019  
Level: 100  
Credit Awarded: 1 LU AIA, HSW

Interior Designers  
IDCEC Class Code: CC-106198-R1  
Credit Awarded: 1 LU IDCEC, HSW

### Participants will learn:

- Designer and Owner needs for commercial interior doorways
- The pitfalls of traditional doorways and doorway protection
- Industry guidelines and standards for performance
- Doorway design solutions to Increase durability
- Specification tips to ensure longevity and quality

## Cubicle Curtains + Tracks



### Combatting (HAI) Healthcare Associated Infections

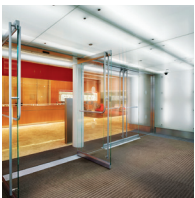
Architects  
Program Number: HAI2014  
Level: 100  
Credit Awarded: 1 LU AIA

Interior Designers  
IDCEC Class Code: CC-104598-R2  
Credit Awarded: 1 LU IDCEC

### Participants will learn:

- Understand the definition of hospital acquired infections (HAI)
- Identify contributing factors to HAI's
- Have awareness of the mortality rate associated with HAI's
- Have awareness of the financial impact HAI's have on the community and our healthcare system
- Understanding preventions and solutions that can lessen the impact of HAI's
- Case Studies

## Entrance Mats + Grids



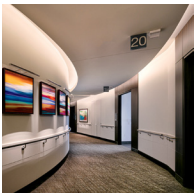
### Entrance Mats + Grids: Design with the elements in mind

Architects  
Program Number: EFSPR02  
Credit Awarded: 1 LU AIA, HSW, GBCI, AAHID

### Participants will learn:

- What are entrance flooring systems and why are they needed?
- How to reduce maintenance costs and slip/fall accidents
- How to properly design and integrate EFS into your design/building
- Environmental considerations with a focus on LEED® and Cradle 2 Cradle
- Making a great first impression

## Wall Protection



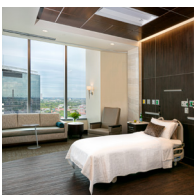
### Life Extension for Interior Surfaces

Architects  
Program Number: ACROV5  
Credit Awarded: 1 LU AIA, HSW

Interior Designers  
IDCEC Class Code: CEU-112953  
Credit Awarded: 1 LU IDCEC, HSW

### Learning objectives:

- Describe the kind of damage that occurs to building interiors, including what types of buildings wall damage is more likely to occur
- Discuss wall protection options which help to ensure safety for building occupants and longevity of the building interior
- Define the different wall protection applications, including how to seamlessly incorporate them into a space to maintain aesthetics
- Summarize how wall protection products contribute toward satisfying LEED® V4 credits as well as other green building program requirements



### The Evolution of Interior Wall Protection: From Functional to Inspirational Healthcare Spaces

Architects  
Program Number: EIWPO2  
Credit Awarded: 1 LU AIA, HSW

Interior Designers  
IDCEC Class Code: CEU-114444  
Credit Awarded: 1 LU IDCEC, HSW

### Learning objectives:

- Understand wall protection and how it has evolved into a dual-purpose product that not only protects the building long term but aesthetically enhances the healthcare space
- Discuss how reduced Medicare reimbursement for high HAI's and low HCAHPS scores have affected healthcare design and product selection
- Examine trends in specialized healthcare and how the continued desire to improve patient safety and healing is driving product innovations in wall protection accessories
- Explore new ways to use wall protection to create more inviting spaces which can increase patient well-being and minimize health and safety issues

## Sustainability

---



### **Why Sustainability and Material Health Matters to You**

Architects  
**Program Number:** SL1003  
**Level:** 100  
**Credit Awarded:** 1 LU AIA, HSW

Interior Designers  
**IDCEC Class Code:** CEU-106573-R1  
**Credit Awarded:** 1 LU IDCEC, HSW

A concise overview of the foundations of sustainability and material health; giving contextual solutions and mitigation strategies essential to good design.

Discuss origins and scope of contemporary sustainability in order to place its mitigation of environmental and human health issues into a business/world view.

### **Objectives**

- Describe contextual sustainability in order to understand and integrate its beneficial impacts into the design
- Overlay and relate design and materials selection to human health and environmental impacts
- Engage others in discussions supportive of selecting healthy and sustainable materials



### **Navigating The Material Health Landscape for Designing Healthy Buildings**

Architects  
**Program Number:** SS2003  
**Level:** 200/300  
**Credit Awarded:** 1 LU AIA, HSW

Interior Designers  
**IDCEC Class Code:** CC-106562-R1  
**Credit Awarded:** 1 LU IDCEC, HSW

This session will provide an overview of the foundations of sustainability and material health for the purpose of identifying contextual solutions and strategies essential for designing healthy buildings. Participants will learn how certifications, and declarations can help them design healthy buildings. It shouldn't be a battle for the best label, but rather the best products for your building.

### **Objectives**

- Be conversant as to the origins and scope of contemporary sustainability in order to place its mitigation of environmental and human health issues into a business/world view
- Understand the design/materials connection to human health and environmental impacts
- Meet the stakeholder's sustainable design requirements using multiple environmental and human health attributes to guide and determine the material selection and approval process

## Behavioral Health

---



### **Improving The Human Experience in Behavioral Health Settings: How to Create Comfortable, Safe, and Inviting Spaces Through Smart Design**

Architects  
**Program Number:** BH1121  
**Level:** 100  
**Credit Awarded:** 1 LU AIA, HSW

Interior Designers  
**IDCEC Class Code:** CC-115858-1000  
**Credit Awarded:** 1 LU IDCEC, HSW

In this presentation we will examine the current state of behavioral health in America, provide an overview of behavioral health facility types, therapy methods, patient safety considerations, and guidelines for facility design. This course will showcase principles to guide design including how to create safe social spaces, leverage biophilic design principles, phenomenology and tap into color theory, textures, and lighting to enhance healing. Additionally, this course features real life examples of implementing these principles to assist in the healing process, preserve patient dignity, and balance the safety of patients and staff.

### **Objectives**

- Recognize the heightened need for thoughtful design in behavioral health spaces
- Investigate elements of human centered design and how to create beautiful, safe, and engaging spaces that preserve patient dignity
- Understand design principles that contribute to a positive patient experience and support creating safe social spaces with biophilic design principals and tap into Phenomenology
- Learn how to balance design with safety through careful product and material selection