

## Acrovyn by Design® Patterns - Textile Collection



Acrovyn by Design® Textile Patterns from left: Wave Weave Maxi (in Conch), Muslin (in Oat), Hatch (in Verde), Corduroy (in Aqua).

Our Acrovyn by Design Patterns - Textile Collection allows you to quickly update a space with a textile look, without sacrificing the durability. Save time in the design process by simply choosing from a variety of color and pattern options ranging from bold to subtle. Whether updating an entire space, or creating a focal point, our Textile Collection easily helps liven up a space and keeps it looking good for years to come.

## Acrovyn by Design® Patterns - Textile Collection

### Wave Weave Mini



20047 Oyster



20042 Opal



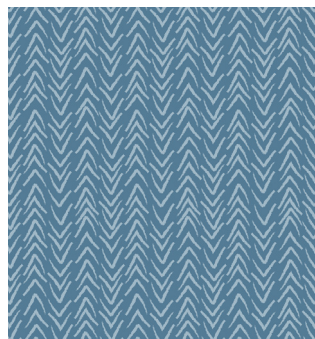
20044 Puka Shell



20043 Conch



20045 Flame Auger



20046 Blue Wave

### Wave Weave Maxi



20047 Oyster



20042 Opal



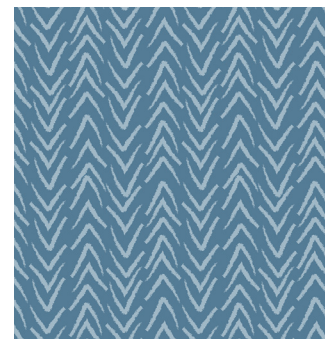
20044 Puka Shell



20043 Conch



20045 Flame Auger



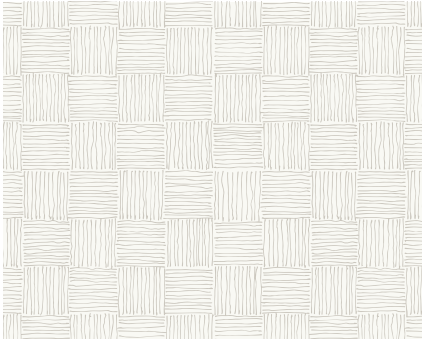
20046 Blue Wave

*Wave Weave is available in vertical and horizontal orientation.  
Mini and Maxi patterns repeat every 6" horizontally and vertically.*

*Due to differences in monitor resolutions, colors shown may vary. Please request samples prior to specifying.*

# Acrovyn by Design® Patterns - Textile Collection

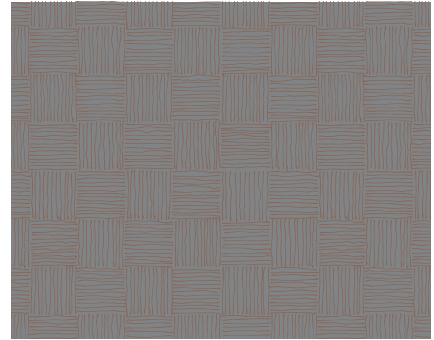
## Basket Weave



14108 Cotton



14113 Mist



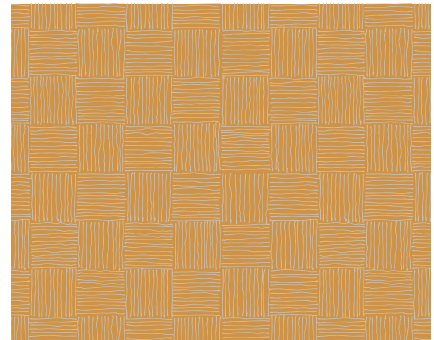
14114 Lava



14107 Gale



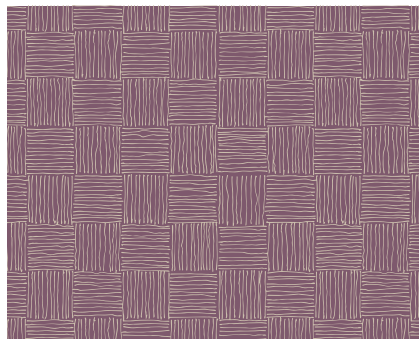
14109 Cashew



14110 Butternut



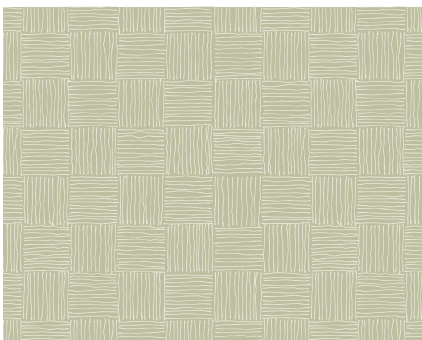
14104 Blush



14111 Eggplant



14103 Robin

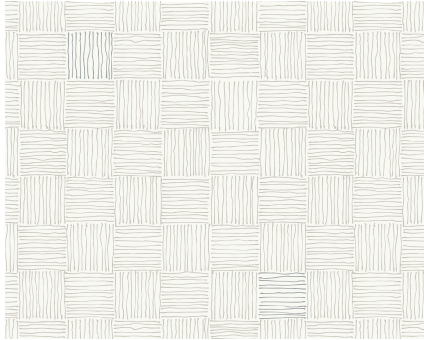


14112 Melon

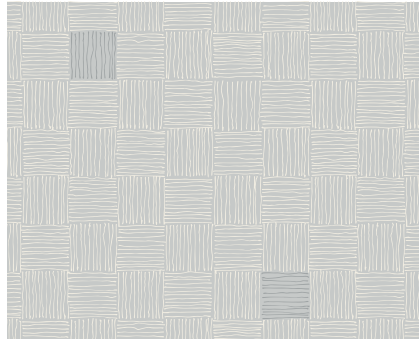
*Due to differences in monitor resolutions, colors shown may vary. Please request samples prior to specifying.*

## Acrovyn by Design® Patterns - Textile Collection

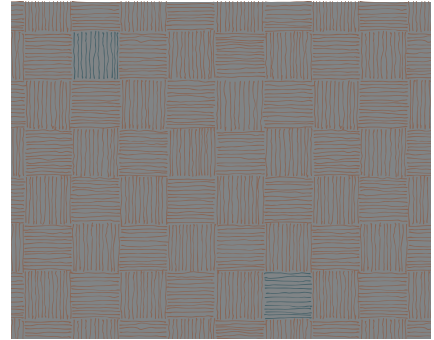
### Basket Weave Bold



14108 Cotton



14113 Mist



14114 Lava



14107 Gale



14109 Cashew



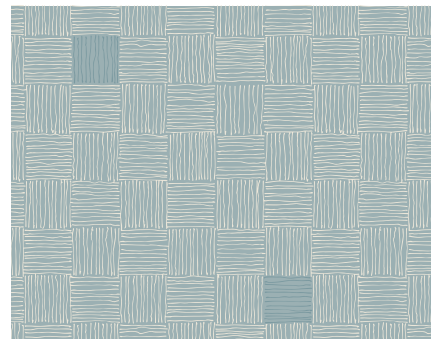
14110 Butternut



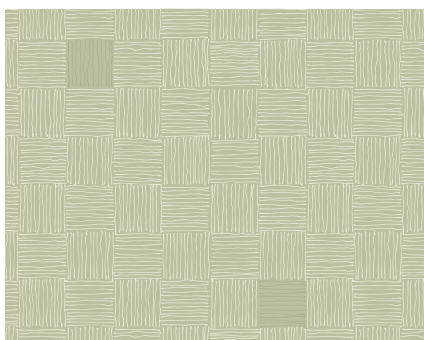
14104 Blush



14111 Eggplant



14103 Robin

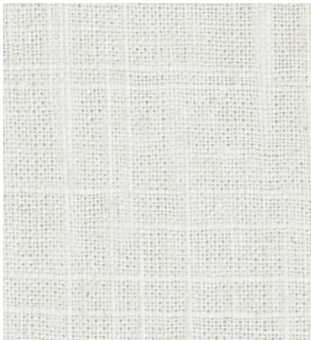


14112 Melon

*Due to differences in monitor resolutions, colors shown may vary. Please request samples prior to specifying.*

## Acrovyn by Design® Patterns - Textile Collection

### Hatch



14116 Mother of Pearl



14122 Shale



14123 Pewter



14124 Oat



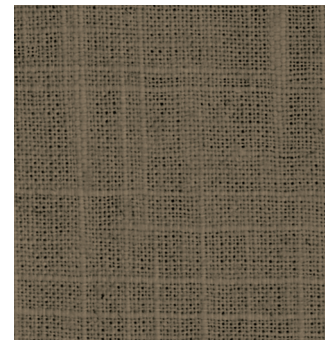
14117 Shea



14121 Gray Goose



14115 Lentil



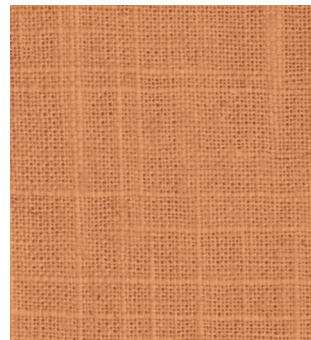
14127 Baked



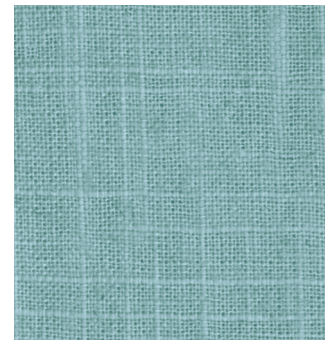
14118 Cornsilk



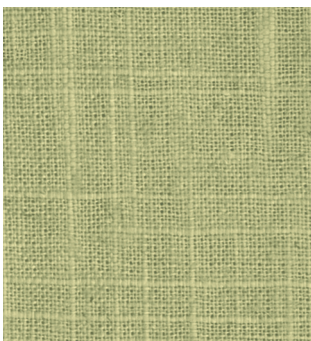
14119 Ochre



14120 Terracotta



14126 Aqua



14125 Verde

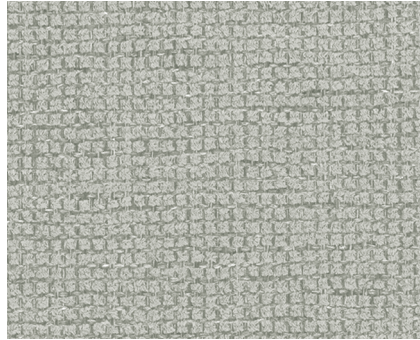
*Due to differences in monitor resolutions, colors shown may vary. Please request samples prior to specifying.*

## Acrovyn by Design<sup>®</sup> Patterns - Textile Collection

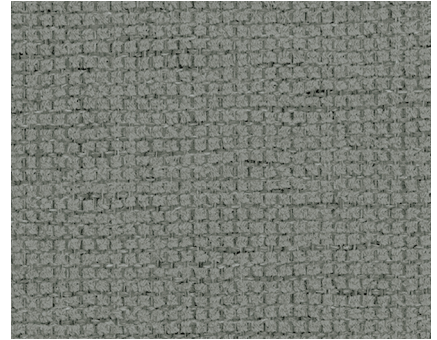
### Coarse Weave



14116 Mother of Pearl



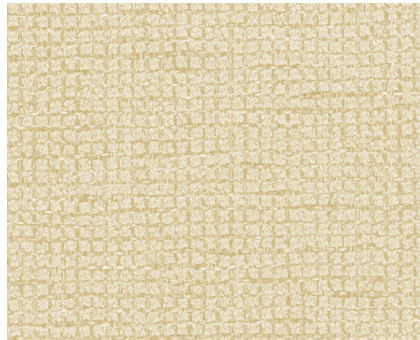
14123 Pewter



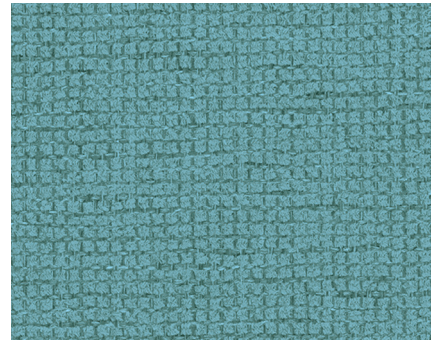
14131 Carbon



14121 Gray Goose



14118 Cornsilk

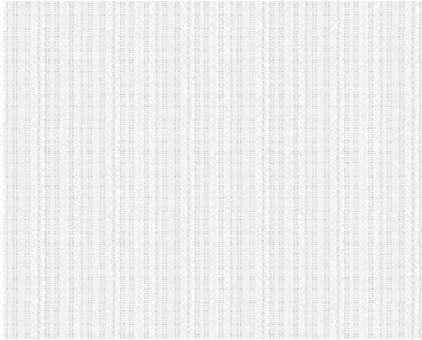


14126 Aqua

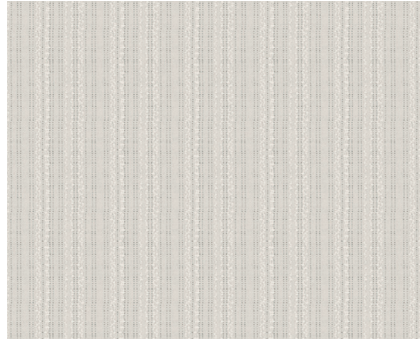
*Due to differences in monitor resolutions, colors shown may vary. Please request samples prior to specifying.*

## Acrovyn by Design® Patterns - Textile Collection

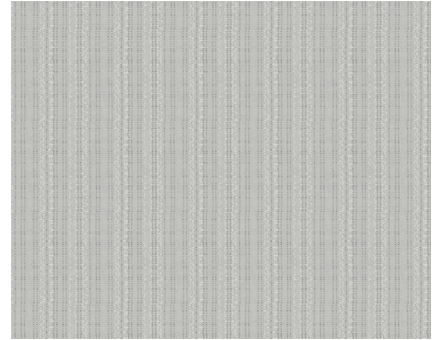
### Corduroy



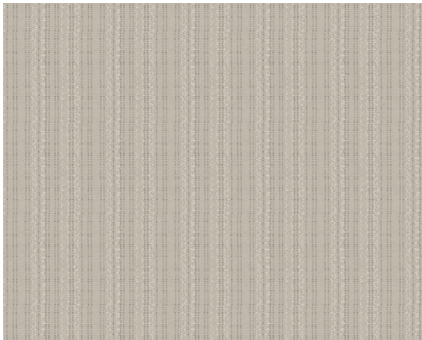
14116 Mother of Pearl



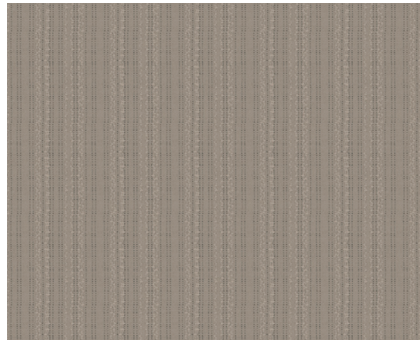
14121 Gray Goose



14123 Pewter



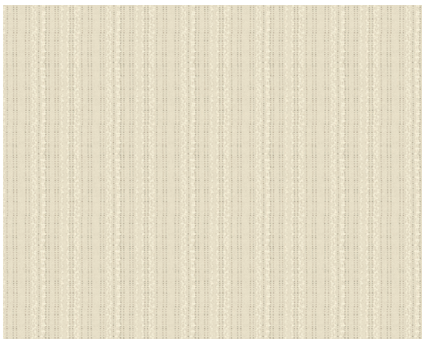
14128 Tanned



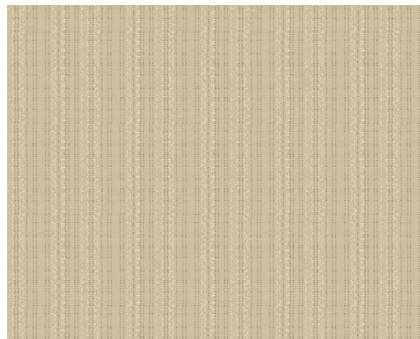
14129 Portobello



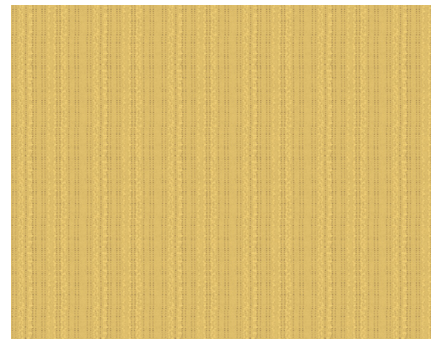
14130 Flax



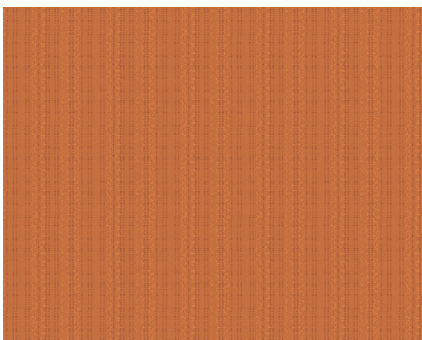
14118 Cornsilk



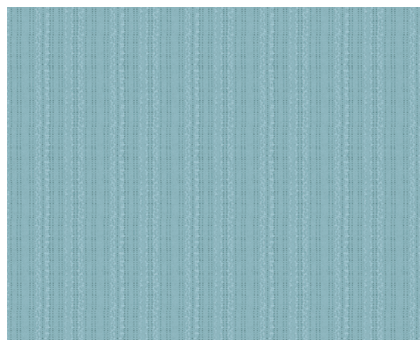
14124 Oat



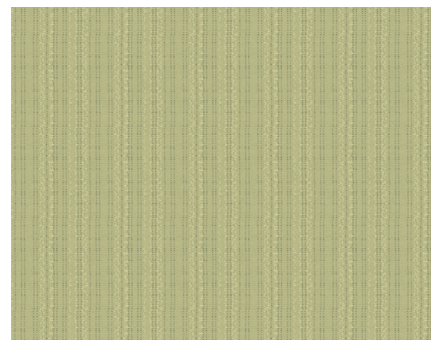
14119 Ochre



14120 Terracotta



14126 Aqua



14125 Verde

*Due to differences in monitor resolutions, colors shown may vary. Please request samples prior to specifying.*

## Acrovyn by Design<sup>®</sup> Patterns - Textile Collection

### Muslin



14116 Mother of Pearl



114121 Gray Goose



14123 Pewter



14117 Shea



14124 Oat



14130 Flax



14118 Cornsilk



14119 Ochre



14120 Terracotta



14126 Aqua



14125 Verde

*Due to differences in monitor resolutions, colors shown may vary. Please request samples prior to specifying.*