

SEEDS OF HOPE—A DEMONSTRATION PROJECT TO ADDRESS SENIOR HOMELESSNESS 6 CLAREMONT STREET, WORCESTER MASSACHUSETTS

This pilot program to create ADA Accessible 'Tiny Homes' is being developed through a partnership among the United Way of Central Massachusetts, Worcester Community Housing Resources, and Open Sky Community Services with the intent of developing cost effective affordable housing for older adults at risk of homelessness.

Projected Completion Date: December 2025

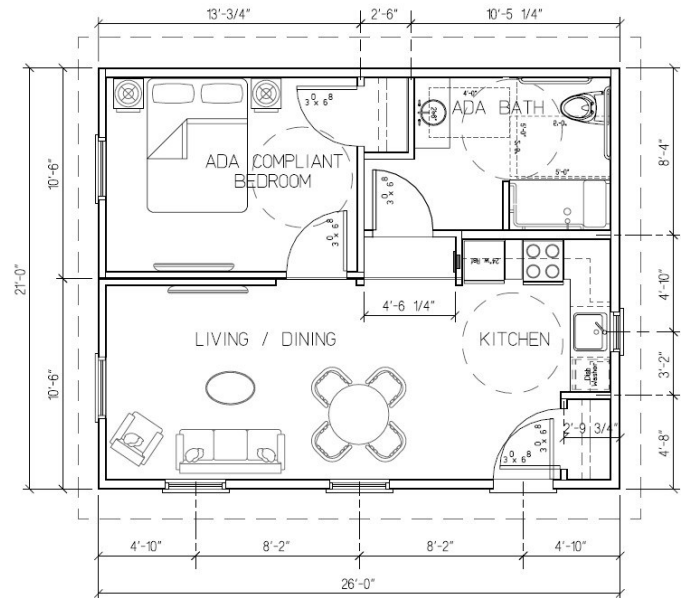
Location: Worcester, MA

Construction:

Pre-fabricated Modular Units with concrete foundation



Exterior Perspective View



Floor Plan — 546 square feet

- Factory constructed prefabricated units
- Significant costs savings and reduced construction time
- ADA Accessible one bedroom units
- Energy efficient, solar ready
- Full kitchen / dining rooms
- Window positioning provides dedicated, private outdoor space for each unit.



Interior Perspective View at Bedroom



Interior Perspective View at Livingroom

STRAVOS SUMMER RESIDENCE - 17 MOUNTAIN VIEW ROAD, TEMPLE MAINE

This hybrid modular / panelized / traditional stick frame project sited on a mountainside overlooking the pristine mountains and valleys in Southern Maine provides year round outdoor activities. The raised living level and extensive exterior deck provides unmatched panoramic views.

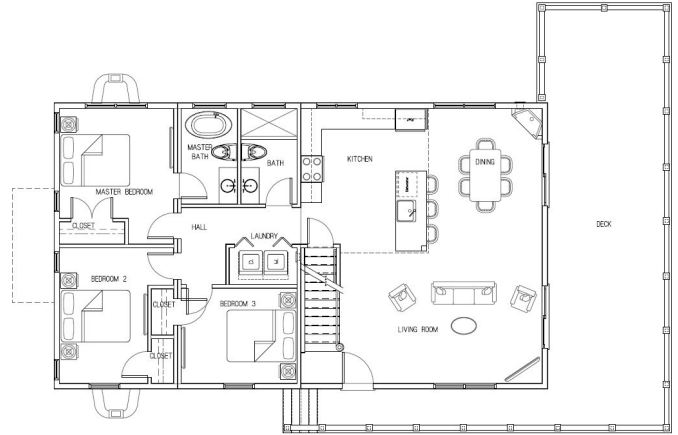
Completion Date: September 2025

Location: Temple, Maine

Construction:

Hybrid Modular / Panelized / Stick Built

Square Footage: 3,200 s.f.



First Floor Plan



Exterior Perspective View

- Unobstructed view of surrounding mountains
- Hybrid construction allows creativity, not limited by module placement
- Open space such as Great Room are panelized and stick built
- Bedrooms / Bathrooms are modular

- Module placement in one day
- Open plan with cathedral Great Room
- Composite exterior materials
- Exterior deck with drainage system allows space below deck as additional patio space.
- Energy efficient construction
- Potential lower level fit out for ADA Accessible Air BnB.



Interior Perspective View

HORAN SUMMER RESIDENCE - 29 MANDIGO ROAD, DENNIS MASSACHUSETTS

This hybrid modular / panelized / traditional stick frame project replaces a cherished family cottage on Mayflower Beach, Dennis Massachusetts. The raised living level, extensive exterior deck and Loft level balcony provides both flood protection and an unmatched panoramic view of Cape Cod Bay.

Completion Date: October 2025

Location: Dennis, Massachusetts

Construction:
Hybrid Modular / Panelized / Stick Built

Square Footage: 1,228 s.f.



Aerial View from Cape Cod Bay

- Unobstructed view of Cape Cod Bay
- Hybrid construction allows creativity, not limited by module placement
- Open space such as Great Room are panelized and stick built
- Bedrooms / Bathrooms / Kitchen are modular



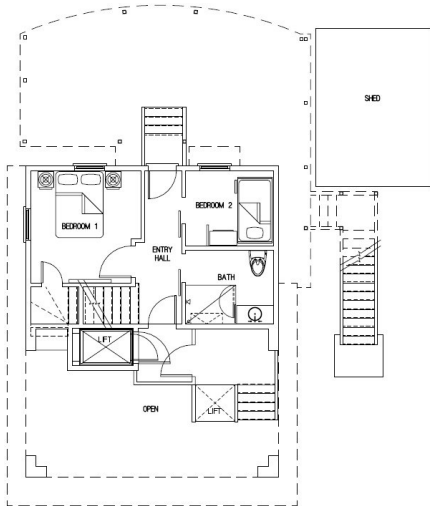
Exterior Perspective View

- Module placement in one day
- Open plan with cathedral Great Room and interior glass bridge leading to upper exterior balcony
- Composite exterior materials
- Exterior deck with drainage system allows space below deck as additional patio space.
- Energy efficient construction
- Psychological impact of seeing a project come to fruition quickly compared to the normal disruptions which typically come with long term construction projects.

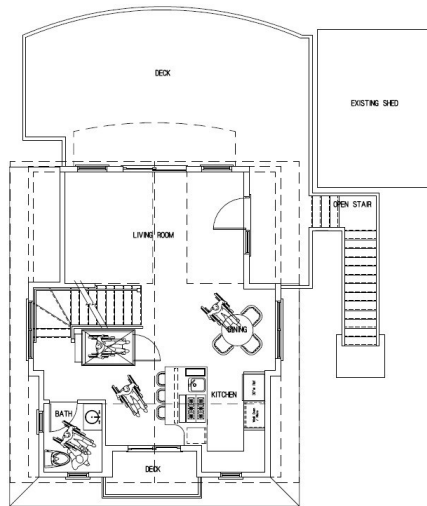


Interior Perspective View

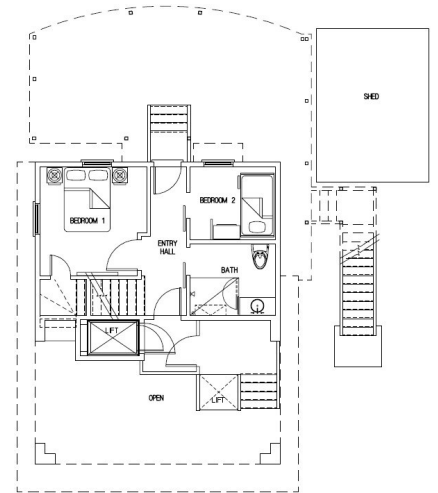
HORAN SUMMER RESIDENCE - 29 MANDIGO ROAD, DENNIS MASSACHUSETTS



Ground Floor Plan



First Floor Plan



Loft Floor Plan



Front Elevation



Right Elevation



Rear Elevation



Left Elevation