

BLACK EDUCATED LESBIANS





Who we are?

Black Educated Lesbians (BEL) is a global 501(c)(3) nonprofit organization founded on September 10, 2014. What began as a single Facebook group has evolved into a thriving international network, officially becoming a nonprofit in 2021. Our mission is to provide a platform where professional Black lesbians can engage in meaningful conversations about the issues that impact our lives—while fostering connection, support, and collective empowerment.

BEL currently operates 67 specialized Facebook groups that focus on a variety of interests, including Black Lesbian Couples, Parenting, Employment, and Career Development. We also lead 20 local chapters worldwide, including BEL-Metro Atlanta, BEL-Africa, BEL-Mexico, and BEL-Europe. Our expansive reach reflects the diversity of our community and ensures that Black lesbians across the globe have a safe, affirming space to connect, grow, and thrive.



Mission Statement

Black Educated Lesbians (BEL) exists to empower, connect, and uplift Professional Black lesbians—centered on the lives and experiences of Black lesbians—through community, leadership, wellness, and economic advancement. We create safe, affirming spaces that foster sisterhood, build legacy, and amplify the voices of Black lesbians globally. BEL is committed to cultivating visibility, healing, and generational impact through intentional programming and collective power.

Vision Statement

Black Educated Lesbians (BEL) envisions a world where Black lesbians—are fully affirmed, visible, and empowered to thrive in every aspect of life. We imagine a global community rooted in sisterhood, where wellness, leadership, legacy-building, and economic justice are not only accessible, but expected.

We see a future where Black lesbians lead boldly, live authentically, and create transformative change across industries, movements, and generations. BEL strives to be a guiding force in building that future—one where connection, care, and collective power uplift our community worldwide.



Our Programs



Mind, Body & Soul

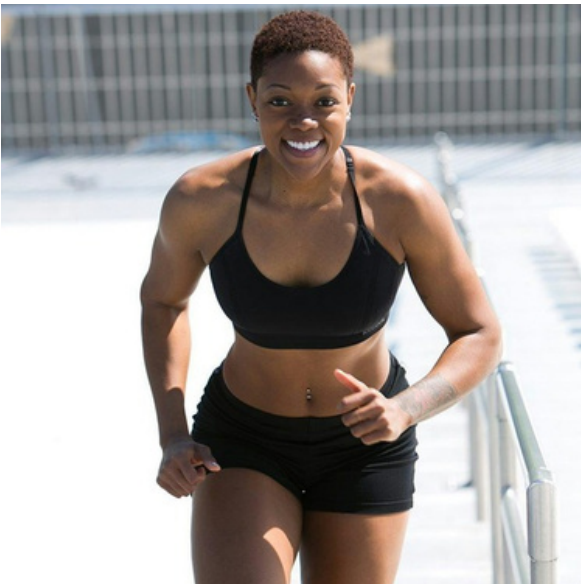
Theme: Mental Health, Healing, and Emotional Wellness

Purpose:

The Mind, Body & Soul program is BEL’s holistic wellness initiative designed to nourish our community from the inside out. We know that true power begins with wholeness—mentally, physically, and spiritually. This program provides intentional spaces for Black lesbians to pause, reflect, and restore balance in their daily lives.

Key Activities:

- Mental Health & Healing – Workshops, resources, and open conversations about emotional well-being, therapy, and breaking stigma.
- Meditation & Movement – Practices like yoga, stretching, breathwork, and mindfulness to release stress and reconnect with self.
- Music & Creative Expression – Using art, sound, and storytelling as pathways to joy, reflection, and community connection.



Be Strong & Healthy

Theme: Physical Wellness and Preventive Care

Purpose:

The Be Strong & Healthy program is BEL’s commitment to empowering Black lesbians to live vibrant, active, and balanced lives. Health is more than the absence of illness—it’s strength, energy, and joy in our bodies. This initiative focuses on physical fitness, nutrition, and holistic wellness as essential tools for leadership and longevity.

Key Activities:

- Fitness & Movement – Group activities, wellness walks, and exercise that encourage strength, stamina, and body confidence.
- Nutrition & Healthy Living – Education on everyday food choices, meal planning, and access to resources that fuel our bodies.
- Preventive Care – Raising awareness about health screenings, chronic conditions, and the importance of regular medical checkups.



BEL Wealth & Legacy

Theme: Financial Empowerment and Economic Justice

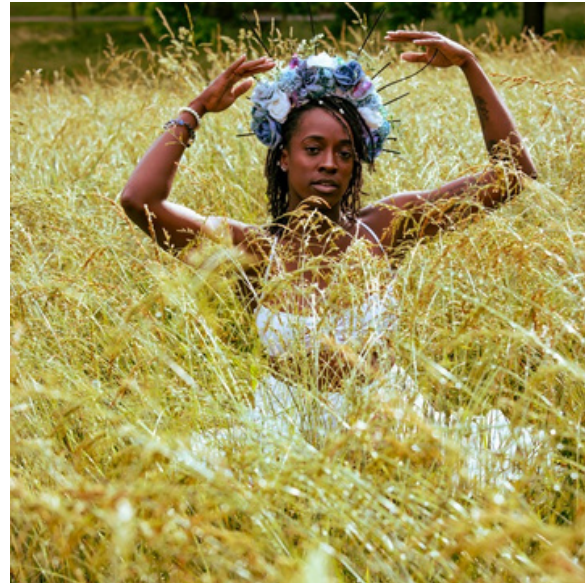
Purpose:

BEL Wealth & Legacy equips Black lesbians with the tools to build financial stability and long-term wealth. We believe financial freedom is a form of liberation—and a foundation for generational impact.

Key Activities:

- Financial Literacy – Budgeting, saving, credit repair, and debt management.
- Home Buying – Education and guidance on homeownership, including understanding the buying process, improving credit readiness, navigating mortgages, and avoiding predatory lending practices.
- Generational Wealth Building-Support around investing, retirement planning, insurance, estate basics, and legacy planning to help participants protect assets and pass wealth forward.

Our Programs



The SoulRoot Collective

Theme: Sustainability, Environmental Justice, and Cultural Healing

Purpose:

This initiative reconnects Black lesbians to the land, culture, and sustainability practices that affirm identity and promote collective well-being. Through urban gardening, eco-education, and ancestral healing workshops, The SoulRoot Collective cultivates resilience rooted in our cultural heritage.

Key Activities:

- Gardening & Food Justice – Hands-on opportunities to grow, share, and access nourishing foods.
- Environmental Advocacy – Promoting climate justice and sustainable practices that protect our communities.
- Cultural Preservation – Honoring ancestral wisdom, traditions, and stories that root us in identity.
- Community Connection – Building spaces for collective learning, celebration, and healing.



EmpowerHER

Theme: Cultivating Leadership, Mentorship & Legacy for Black Lesbians & Girls

Purpose:

EmpowerHER is a dynamic leadership and mentorship initiative under Black Educated Lesbians (BEL), intentionally designed to nurture the personal and professional growth of Black lesbians and girls across three critical life stages. Through curated experiences, strategic mentorship, and culturally grounded support, EmpowerHER ensures our community leads with confidence, care, and connection.

Key Activities:

- Youth Mentorship (Ages 16–21) – Building confidence, leadership skills, and identity affirmation in safe, supportive spaces.
- College & Graduate Support – Creating networks of guidance for students navigating academics, career preparation, and community engagement.
- Professional Development – Workshops and mentorship for career advancement, entrepreneurship, and leadership within organizations.
- Intergenerational Connection – Pairing experienced leaders with rising voices to strengthen community through shared knowledge and support.

BEL Subgroups

BEL offers approximately 40 subtopic groups designed to foster deeper conversations and provide support and advice on a wide range of topics. Many of these groups also host their own virtual meet-and-greets, creating additional opportunities for connection and community-building.

- Black Lesbian Bikers
- Black Lesbian Health & Fitness
- Black Lesbian Couples
- Black Lesbians Seeking Connections
- Black Lesbian Entrepreneurs
- Black Lesbian Parents
- Black Lesbian Mental Health Professionals
- Black Lesbian Community Organizers
- BEL-Seasoned Sisters

- Black Lesbians Mental Health Support
- Black Lesbians Investing & Personal Finance Group
- Black Lesbians Academia & Education
- Black Lesbians Book Club
- Black Lesbians Real Estate
- BEL-Travel
- Black Lesbians Gardening and Farming
- BEL Check In

- Black Lesbians Seeking Employment & Careers
- Black Lesbians in the Trucking Industry
- Black Lesbians Greek Sorority & Fraternity
- Black Lesbians Food & Wine
- Black Lesbians Connecting to MotherEarth 🌿
- Black Lesbians in Healthcare
- Black Lesbians in Tech
- Black Lesbians in the Military

Local Chapters

Our local chapters are designed to bring together like-minded individuals from the community, fostering a supportive environment for both social interactions and professional growth. While we aim to incorporate community service initiatives in the near future, our current focus is on building and expanding our membership base.

- BEL-Southern Louisiana Chapter
- BEL-DMV Chapter
- BEL-Houston Chapter
- BEL-Pacific West Coast Chapter
- BEL-KOI Chapter
- BEL-DFW Chapter
- BEL-Northern Cali Chapter
- BEL-Los Angeles Chapter
- BEL-Southern Cali/Las Vegas Chapter
- BEL-New York/New Jersey Chapter
- BEL-Chicago Chapter
- BEL-Metro Atlanta Chapter
- BEL-Nashville/Memphis Chapter
- BEL-Arkansas/Kansas/Missouri/Oklahoma Chapter
- BEL-Pennsylvania Chapter
- BEL-Detroit Metro Chapter
- BEL-The Carolinas Chapter
- BEL-Southern Georgia/Northern Florida Chapter
- BEL-Central Florida Chapter
- BEL-Southern Florida Chapter
- BEL-Alabama/Mississippi Chapter
- BEL-Arizona/New Mexico Chapter
- BEL-New England Chapter
- BEL-Mexico Chapter
- BEL-Africa Chapter
- BEL-Caribbean Chapter
- BEL-Europe Chapter
- BEL-Southeast Asia

Black Queer Women's Conference

The Black Queer Women's Conference is a powerful three-day experience designed to ignite purpose, amplify leadership, and strengthen the collective power of Professional Black lesbians. Bringing together professionals from across industries, this gathering creates a safe and affirming space where Black queer women can grow, connect, and thrive.

Over the course of three transformative days, attendees will engage in dynamic workshops, courageous conversations, healing-centered panels, and intentional networking opportunities. Together, we'll explore critical themes such as advocacy, wellness, legacy-building, and professional advancement.

This isn't just a conference—it's a movement. A space where sisterhood is strategy, authenticity is celebrated, and the future is being shaped by us, for us.



2025 Conference

The inaugural conference was held from September 18-20th in Metro Atlanta. The 3-Day Conference included a Welcome Reception and Vendor Fair. Over 85 people attended.

Topics Covered:
Healthy Relationships
Mental Health
Physical Health
Domestic Violence
Suicide Prevention
Parenting Panel
Financial Literacy
Reproductive Justice



**Georgia
Equality**
CELEBRATING 30 YEARS

Dr. Brandynicole, LLC
www.drbrandynicole.com PhD • LICSW • LCSW • PMH-C
Mental Health | Training | Consulting | Leadership Development



Our 2025 Sponsors

To bring this event to life, we were fortunate to secure the support of seven sponsors: one in-kind donation, one Friends of BEL sponsor, one Silver Level sponsor, three Gold Level sponsors, and one Platinum Level sponsor. Their generous contributions made this dream a reality, and we couldn't have done it without their support.





Birthing Advocacy

Doula Trainings

In-Kind Donations

We are currently in need of the following items and services:

- **Conference supplies:** Name badges, notebooks, tote bags, and other event materials.
- **Event refreshments:** Snacks and catering services for meals or breaks during the event.
- **Promotional items:** Branded merchandise such as Mugs or other promotional items for attendees.
- **Technology support:** Audio/Visual equipment such as microphones, projectors, and speakers.
- **Gift items:** Raffle prizes or giveaway items for attendees.
- **Printing services:** Conference programs, banners, flyers, and other printed materials.



Lesbifriends
TRAVEL

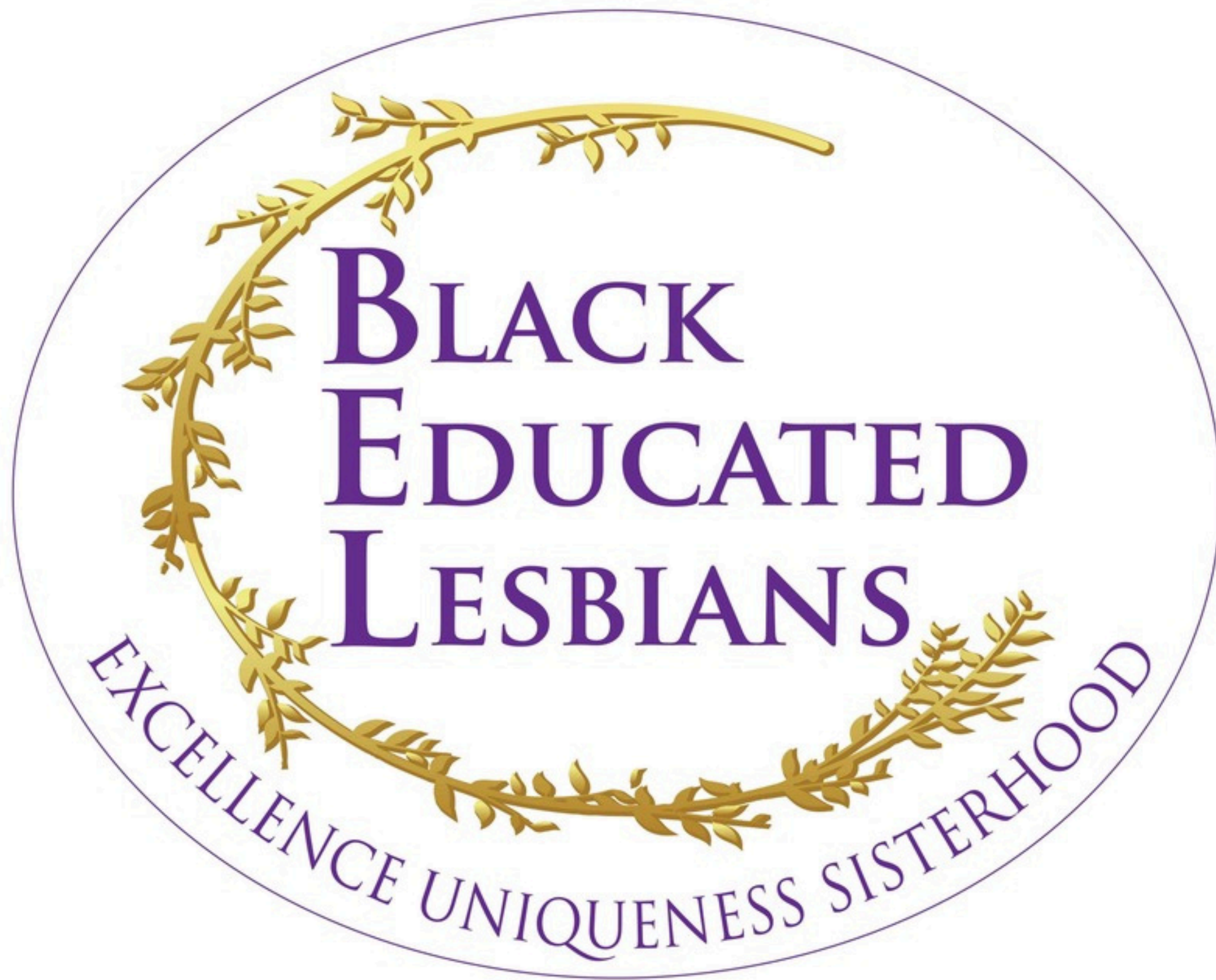


Thank You

With your support, we can turn this conference into an annual event that continues to empower and uplift our community for years to come.

Will you join us in making this vision a reality?





Contact Us



314-252-8039



www.blackeducatedlesbians.com



admin@blackeducatedlesbians.com



PO Box 938; Powder Springs, GA 30127