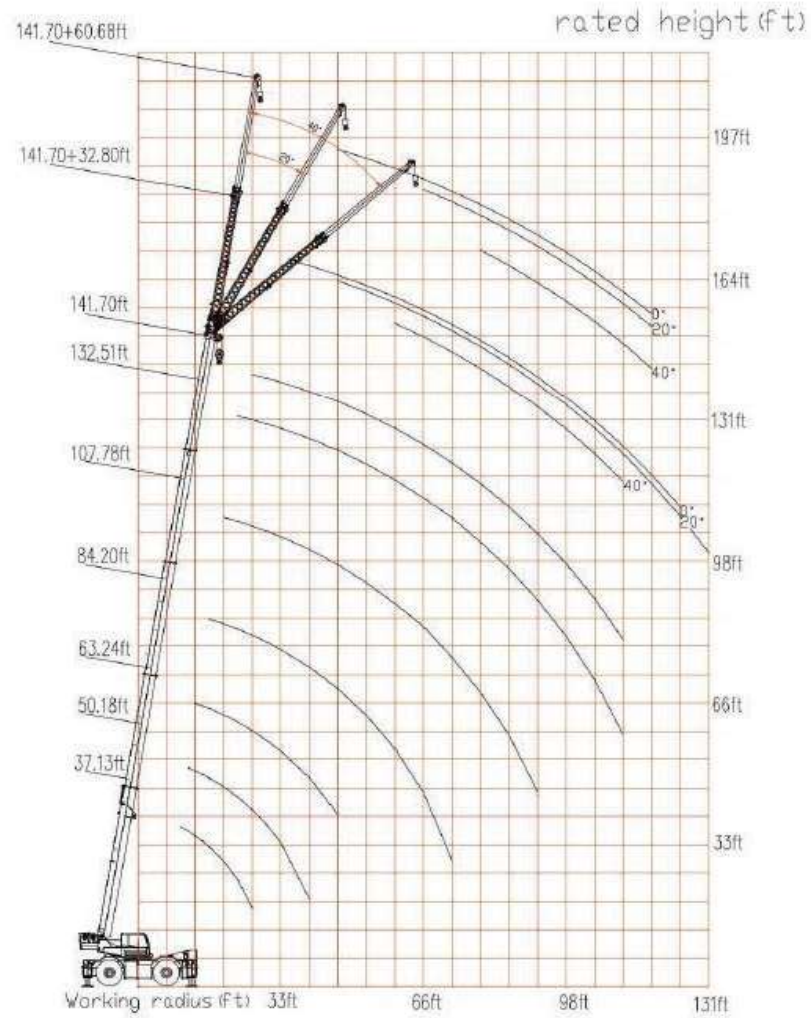


Lifting height curves



For more complete information on XCMG products, dealer services, and industry solutions, visit us on the web at www.xcmg.com

1st Jan 2014 XCMG
All Rights Reserved

Materials and specifications are subject to change without notice. Featured machines in photos may include additional equipment. See your XCMG dealer for available options.

XCMG, WWW.XCMG.COM, their respective logos, "XCMG For Your Success" and the POWER EDGE trade dress, as well as corporate and product identity used herein, are trademarks of XCMG and may not be used without permission.



XCMG For Your Success

Max. Rated Lifting Capacity	143299lb (70US, 65t)
Max. Lifting Torque	1530520 ft · lb (2033kN · m)
Fully Extended Boom Length	141' 8" (43.2m)
Engine Model	Cummins-QS86.2
Rated Engine Power	260hp (194kW)

RT70U

OFF-ROAD WHEELED CRANE

RT70U

Off-road Wheeled Crane

Product Profile

The RT70U, an off-road wheeled crane jointly developed by XCMG and a well-established German R&D institution, combines the flexibility of wheeled cranes and the great lifting and travel performance of crawler cranes. It is equipped with a two-axle off-road undercarriage and features 2 drive modes and 4 steering modes. This highly innovative product has adopted several cutting-edge technologies and has passed high-end market certifications such as the CE certification of Europe and the cTUVus certification of North America.

Product Highlights

Superior Performance

1. The 5-section quadrilateral arc boom has a full length of 141.7 ft., providing lifting performance comparable to competitive models of the same lifting capacity.
2. It provides 2 drive modes, 4 steering modes, forward and reverse gears, and the smallest turning radius in the industry, making it highly maneuverable and flexible.
3. The AWD system equipped with a differential lock, the special cross-country tread pattern tires and the powerful engine provide excellent off-road performance.
4. The hydraulic torque converter with a locking device improves acceleration performance by 10 per cent and provides great mobility.



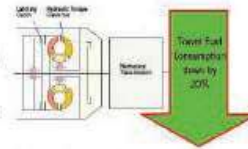
Safety and Reliability

1. The RT70U is designed in strict compliance with European and American safety standards to provide great safety.
2. Proprietary technologies such as the industry-unique automatic brakes and the automatic steering wheel alignment system significantly improve operational safety.
3. Active protection features such as overload, over-rewinding, over-unwinding, and over-extending protection provide great safety and reliability.



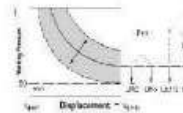
Energy-efficiency

1. The torque converter features a locking clutch to reduce fuel consumption during high-speed travel by about 20 percent.
2. The luffing system employs the gravity lowering method to save energy.
3. The electronic priority controlled hydraulic system with variable power reduces fuel consumption and extends the service life of elements by approximately 15 percent.



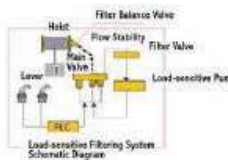
Manipulation Comfort

1. The load-sensitive filtration system filters the impact of load pressure changes on the oil pump flow changes, reducing system fluctuations and maintaining smooth operations.
2. The electric open system with multi-slope current control ensures jitter-free swing system operations.
3. The automated manual transmission makes it easy to shift gears.



Ease of Use

1. The steps and service accesses as well as controls are arranged with ease of use and service in mind.
2. The panoramic cab is equipped with a heavy-duty cooling/heating AC system and a high definition reverse camera system, providing a broad field of vision, improving ride comfort, effectively alleviating fatigue, and enhancing ease of use.
3. The hydraulic power steering system makes steering operations effortless.

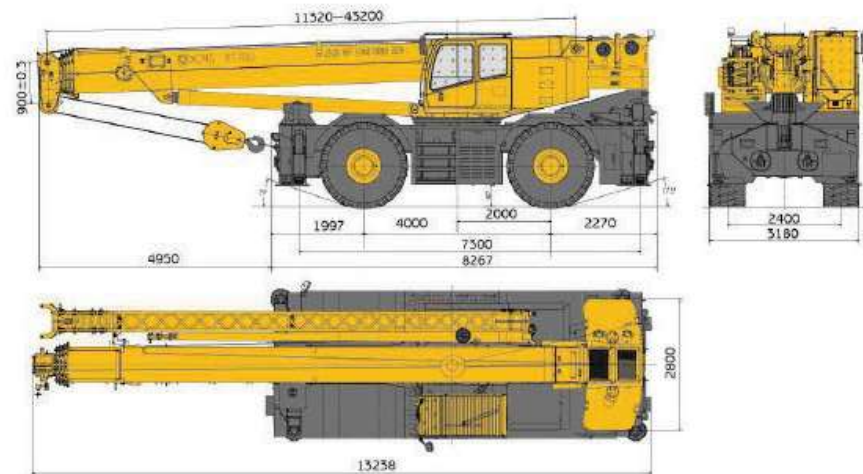


Product Certification

The product is certified by China Construction Machinery Quality Supervision and Inspection Center and TÜV Rheinland of Germany, and is granted China Special Equipment Manufacturing License, CE Certificate and cTUVus Certificate.



Outline Dimensions (mm)



Technical Specifications

Outline Specifications	Outline Dimensions (L*W*H)	518*125*148in	13.135*3.18*3.75m
	Outrigger Span (longitudinal/horizontal)	267.4/283.5in	7.3/7.2m
	Length of the Longest Boom	1700in	43.2m
Weight Specifications	Jib Length	689in	17.5m
	Curb Weight	100188lb	49000kg
	Axle Load (Front Axle/Rear Axle)	56298/51890lb	25500/23500kg
Travel Specifications	Max. Travel Speed	21.7mile/h	35km/h
	Drive Mode		4*2, 4*4
	Approach Angle/Departure Angle		20/17.5°
	Max. Gradability		66%
	Min. Turning Radius (four-wheel)	240in	6.1m
Lifting Performance	Max. Rated Lifting Capacity	70USt	6Et
	Max. Load Torque for Base Boom	1530520ft*lb	2033kN*m
	Max. Lifting Speed	426.6ft/min	130m/min
	Boom Elevating Time		80s
	Boom Extending Time		120s
	Max. Swing Speed		2.0r/min
	Outrigger Beams Extending/Retracting Time (synchronously)		40/30s
	Outrigger Jacks Extending/Retracting Time (synchronously)		55/40s

Lifting Load Tables

In compliance with ASME B30.5 Crane Rules (85% of tipping load)

Rated Outrigger Hoisting Capacity of RT70U (19841.4 lb counterweight, outriggers fully extended, 160° operation, 85% of tipping load)

Working Range	ft	37.1	50.2	63.2	84.2	107.8	131.3	141.7
9.8	143,299							
11.5	120,592	92,593						
13.1	110,230	92,593	77,161					
16.4	91,491	89,948	74,956	57,320				
19.7	73,854	71,870	69,445	55,997	39,683			
23.0	61,729	59,524	58,422	52,690	38,581	26,455		
26.2	51,808	50,265	49,604	50,706	37,919	26,455	19,841	
29.5		41,887	40,785	41,887	37,478	25,353	19,841	
32.8		36,817	36,155	37,478	36,376	24,692	19,180	
39.4		26,896	27,567	29,762	29,101	22,266	18,739	
45.9			19,046	22,805	24,912	21,385	17,857	
52.5				16,791	19,046	18,298	17,196	
59.1				12,530	14,786	16,039	15,212	
65.6				9,273	11,277	12,781	13,282	
72.2				6,766	8,771	10,024	10,526	
78.7					6,766	8,019	8,521	
85.3					5,012	6,265	6,766	
91.9					3,509	4,762	5,263	
98.4						3,509	4,010	
105.0						2,506	3,007	
111.5						1,504	2,005	
Ratio	14	9	7	5	4	3	2	
Hook	77 USt Hook (1480 lb)							
								39 USt Hook (889lb)
Max. Elevation Angle (°)	65	70	74	76	78	79	79	
Min. Elevation Angle (°)	26	22	34	20	25	27	36	
Boom Extending/Retracting Rate	Section 2	0.00%	50.00%	100.00%	100.00%	100.00%	100.00%	100.00%
	Section 3	0.00%	0.00%	0.00%	26.70%	56.70%	86.70%	100.00%
	Section 4	0.00%	0.00%	0.00%	26.70%	56.70%	86.70%	100.00%
	Section 5	0.00%	0.00%	0.00%	26.70%	56.70%	86.70%	100.00%