

# PODHOMES CATALOGUE



At **QBT Global**, we believe a home should do more than shelter; it should **inspire, rejuvenate, and connect you** to the world around you.

Our **PodHomes** are a celebration of refined living where **architecture meets artistry** and **modern engineering meets timeless comfort**.

Each PodHome is a **modular masterpiece** crafted with **precision**, designed with **purpose**, and finished with materials that **elevate** every detail.

Whether you're creating a **resort retreat, a weekend getaway, or a future-ready residence**, QBT PodHomes adapt to your space, your vision and your budget.



# WHY YOU AND WHY US?

Our PodHomes are expertly designed to serve **landowners, resort developers, farm houses, second-home owners, Airbnb hosts, eco-resorts, glamping sites and wellness retreats.**

The **benefits of PodHomes** by QBT Global are:

- > Turnkey solutions - We offer **fully furnished**, ready to move-in solutions
- > CFS (Cold Formed Steel) technology - New **advanced technical** building methods
- > Rapid deployment and low site disruption - Can be ready in as less as **45 days**
- > Energy efficient - Achieve upto a **30% decrease in your energy bills**
- > Durable - We offer a **30 year replacement warranty**





# AT A GLANCE

**\*Site readiness requirement (all models):** Foundation work will be required prior to starting PodHomes deployment. Local code compliance & permits required, to be arranged by client. Final specifications tailored to order.

Collection	Models	Interior Area	Handover Time	Best For
<b>Qubika</b> [ Compact Homes ]	S200, S300, S400	200 - 400 sq ft	Approx. 45 - 60 days	Single pods, densification, hillside or tight sites.  <b>Accomodates 2-4 PAX</b>
<b>Kasa</b> [ Signature Homes ]	K550, K650, K750	550 - 750 sq ft	Approx. 60 - 90 days	Premium stays, family-friendly.  <b>Accomodates 4 PAX</b>
<b>QuickHomes</b> [ Bespoke Villas ]	QH-Custom	750+ sq ft	Approx 90 - 120 days	Multi-bedroom luxury villas, client specific homes  <b>Accomodates 4+ PAX</b>



# THE QUBIKA COLLECTION

Perfection - delivered fast. The Qubika Collection celebrates clean geometry and modern design. Every piece has precise craftsmanship, and unbeatable value—all with rapid turnaround. Built to perform and made to last, get premium quality without the premium wait or price. **Proof that perfect can be quick, flawless and affordable.**

*Starting from ₹8 Lakhs onward.*





# S200

**Size:** L20' x W10' x H10'

**Built Up Area:** 200 sq ft

**Occupancy:** 2 PAX

**Layout:** 1 Bedroom/Living area + 1 Bathroom

## Standard Inclusions

- Bedroom: Bed, Side tables
- Bathroom: WC, Wash basin, Shower, Vents, Shower curtains, Mirror
- Living Area: Wall cabinet, Study table, Mirror
- Electrical: LED lighting, Sockets & switches, Wiring, Breakers, Power Inlet
- Plumbing: Cold/hot water pipe, Water inlet, Drainage
- Others: False ceiling, uPVC windows and door

## Add-ons

- Split Air-conditioner
- Water Purifier
- Hot Water Geyser





# S300

**Size:** L30' x W10' x H10'

**Built Up Area:** 300 sq ft

**Occupancy:** 2 PAX

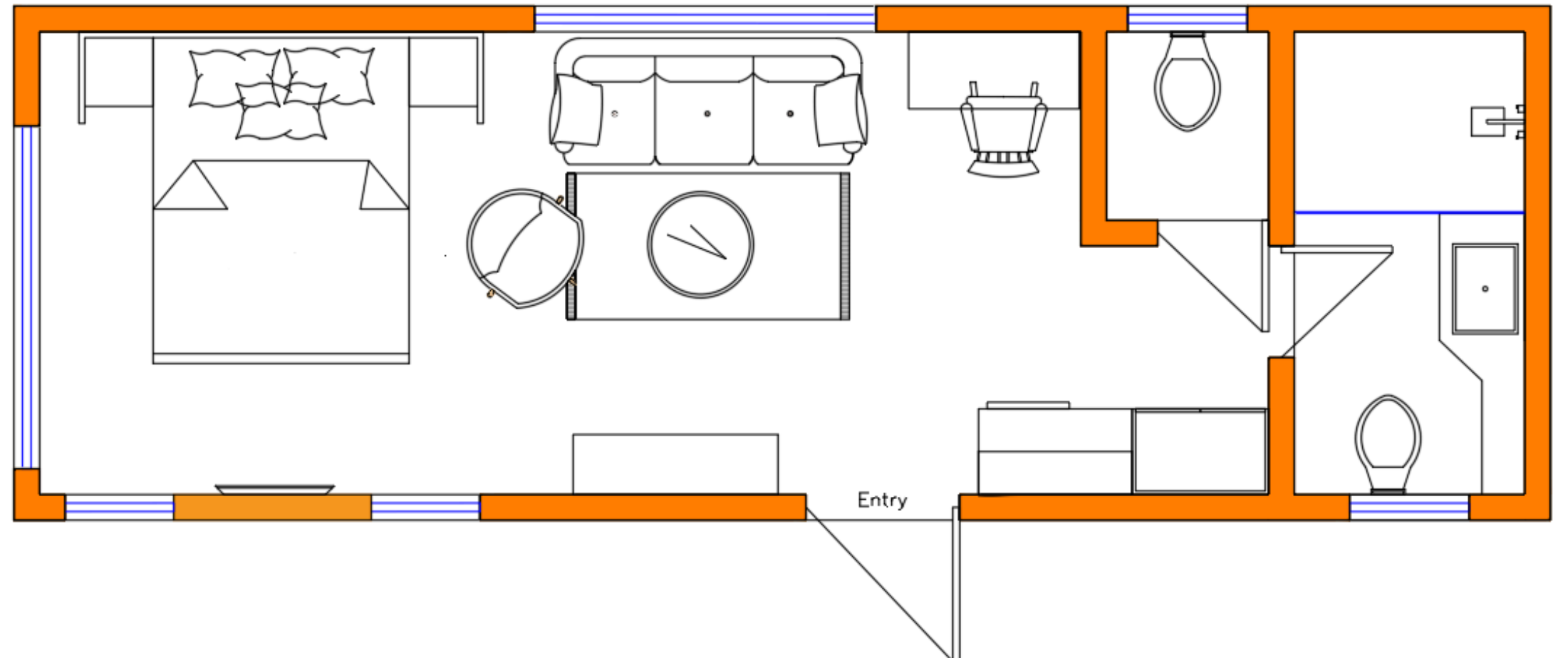
**Layout:** 1 Bedroom + 1.5 Bathroom + 1 Living area

## Standard Inclusions

- Bedroom: Bed, Side tables
- Bathroom: WC, Wash basin, Shower, Vents, Shower curtains, Mirror
- Living Area: Wall cabinet, Sofa-cum-bed, Coffee table, Cupboard, Kitchenette
- Electrical: LED lighting, Sockets & switches, Wiring, Breakers, Power Inlet
- Plumbing: Cold/hot water pipe, Water inlet, Drainage
- Others: False ceiling, uPVC windows and door

## Add-ons

- Split Air-conditioner
- Water Purifier
- Hot Water Geyser





# S400

**Size:** L27' x W20' x H10'

**Built Up Area:** 400 sq ft

**Occupancy:** 4 PAX

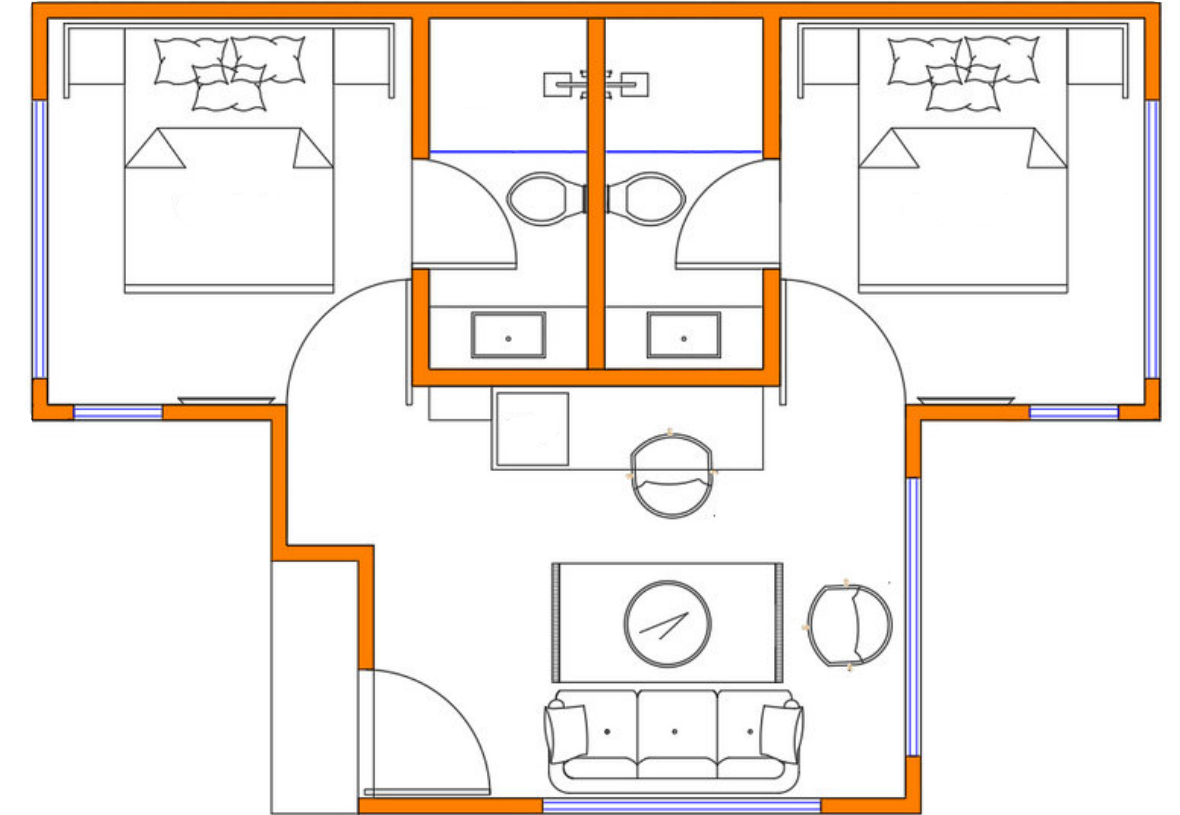
**Layout:** 2 Bedrooms + 2 Bathrooms + 1 Living room + Kitchenette (optional)

## Standard Inclusions

- Bedroom: Beds, Side tables
- Bathroom: WC, Wash basins, Showers, Vents, Shower curtains, Mirrors
- Living Room: Wall cabinet, Sofa, Coffee table, Cupboard, Kitchenette
- Electrical: LED lighting, Sockets & switches, Wiring, Breakers, Power Inlet
- Plumbing: Cold/hot water pipe, Water inlet, Drainage
- Others: False ceiling, uPVC windows and door

## Add-ons

- Split Air-conditioner
- Water Purifier
- Hot Water Geyser





# THE KASA COLLECTION

Big living, built small. The Kasa Collection turns compact design into a lifestyle upgrade - sleek, energy-smart, and Scandinavian inspired design. Each home is engineered for efficiency and effortless style; giving you premium comfort in the best way possible. Modern, modular, and made to move with you. **Because small is powerful and your home should be too.**

*Starting from ₹22 Lakhs onward.*





# K550

**Size:** L28' x W15' x H18'

**Built Up Area:** 550 sq ft

**Occupancy:** 4 PAX

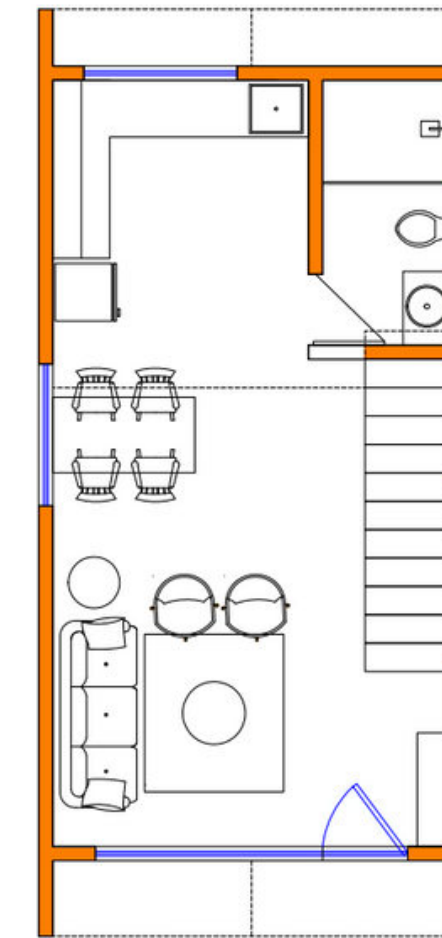
**Layout:** 1 Loft Bedroom + 1 Bathroom + 1 Living room + 1 Kitchen

## Standard Inclusions

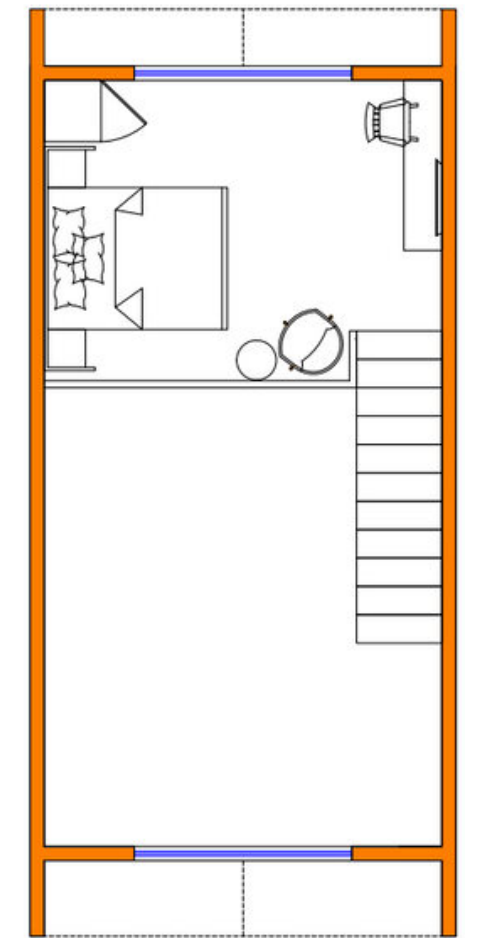
- Bedroom: Bed, Side table
- Bathroom: WC, Wash basins, Showers, Vents, Shower curtains, Mirrors
- Living Room: Wall cabinet, Sofa, High counter table
- Kitchen: Cabinets, Wall counters, Exhaust
- Electrical: LED lighting, Sockets & switches, Wiring, Breakers, Power Inlet
- Plumbing: Cold/hot water pipe, Water inlet, Drainage
- Others: False ceiling, uPVC windows and door, Roofing shingles

## Add-ons

- Touch switches
- Split Air-conditioner
- Water Purifier
- Hot Water Geyser
- Motorised Curtains
- Solar Panels



Ground Level Plan



Loft Level Plan



# K550

**Size:** L25' x W22' x H10'

**Built Up Area:** 550 sq ft

**Occupancy:** 4 PAX

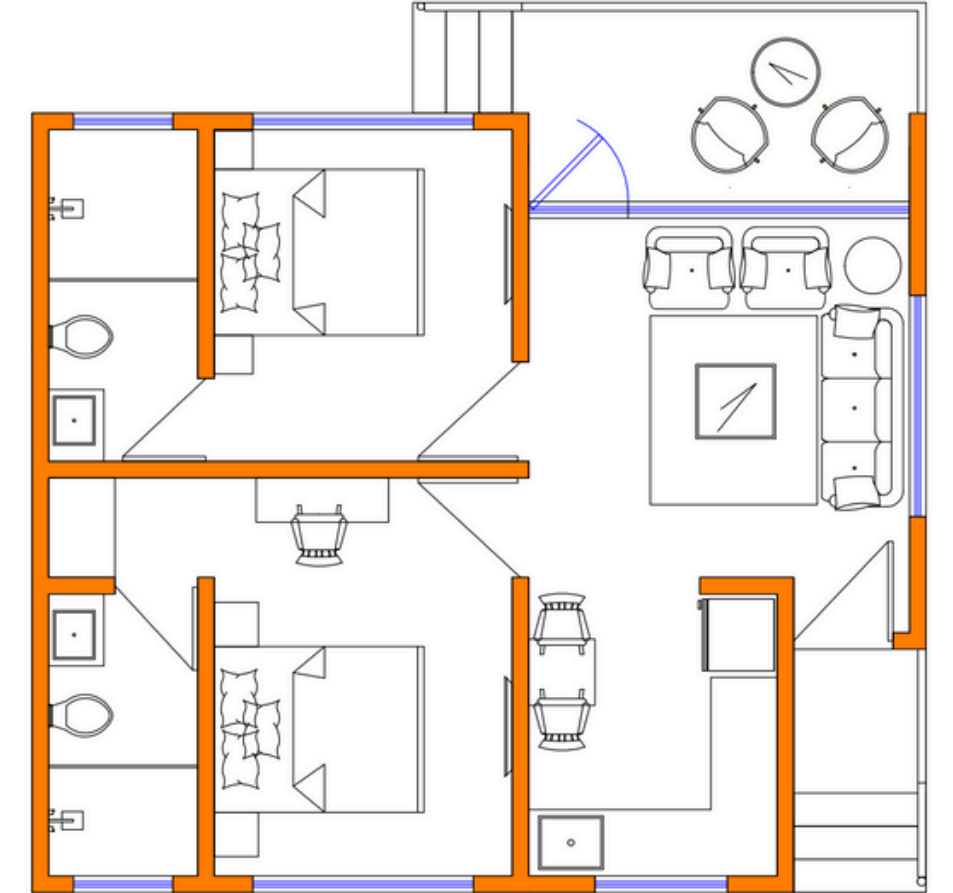
**Layout:** 2 Bedrooms + 2 Bathrooms + 1 Living room + 1 Kitchen

## Standard Inclusions

- Bedroom: Beds, Side tables
- Bathroom: WC, Wash basins, Showers, Vents, Shower curtains, Mirrors
- Living Room: Sofa, Coffee table, Cupboard
- Kitchen: Cabinets, Wall counters, Exhaust
- Electrical: LED lighting, Sockets & switches, Wiring, Breakers, Power Inlet
- Plumbing: Cold/hot water pipe, Water inlet, Drainage
- Others: False ceiling, uPVC windows and door, Roofing shingles

## Add-ons

- Touch switches
- Split Air-conditioner
- Water Purifier
- Hot Water Geyser
- Motorised Curtains
- Solar Panels





# K650

**Size:** L31' x W24' x H10'

**Built Up Area:** 650 sq ft

**Occupancy:** 4 PAX

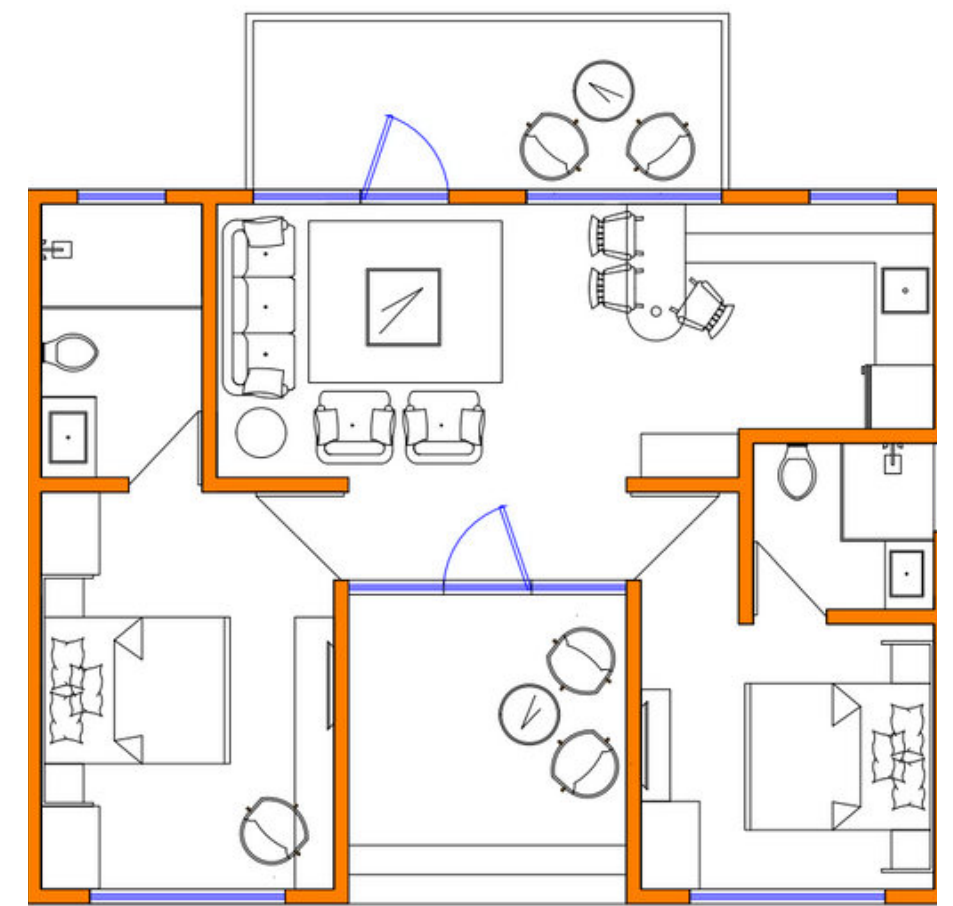
**Layout:** 2 Bedrooms + 2 Bathrooms + 1 Living room + 1 Kitchen

## Standard Inclusions

- Bedroom: Beds, Side tables
- Bathroom: WC, Wash basins, Showers, Vents, Shower curtains, Mirrors
- Living Room: Wall cabinet, Sofa, Coffee table, Cupboard
- Kitchen: Cabinets, Wall counters, Exhaust
- Electrical: LED lighting, Sockets & switches, Wiring, Breakers, Power Inlet
- Plumbing: Cold/hot water pipe, Water inlet, Drainage
- Others: False ceiling, uPVC windows and door

## Add-ons

- Touch switches
- Split Air-conditioner
- Water Purifier
- Hot Water Geyser
- Motorised Curtains
- Solar Panels





# K750

**Size:** L26' x W26' x H10' (+ Entryway L6' x W10' x H10')

**Built Up Area:** 750 sq ft

**Occupancy:** 4 PAX

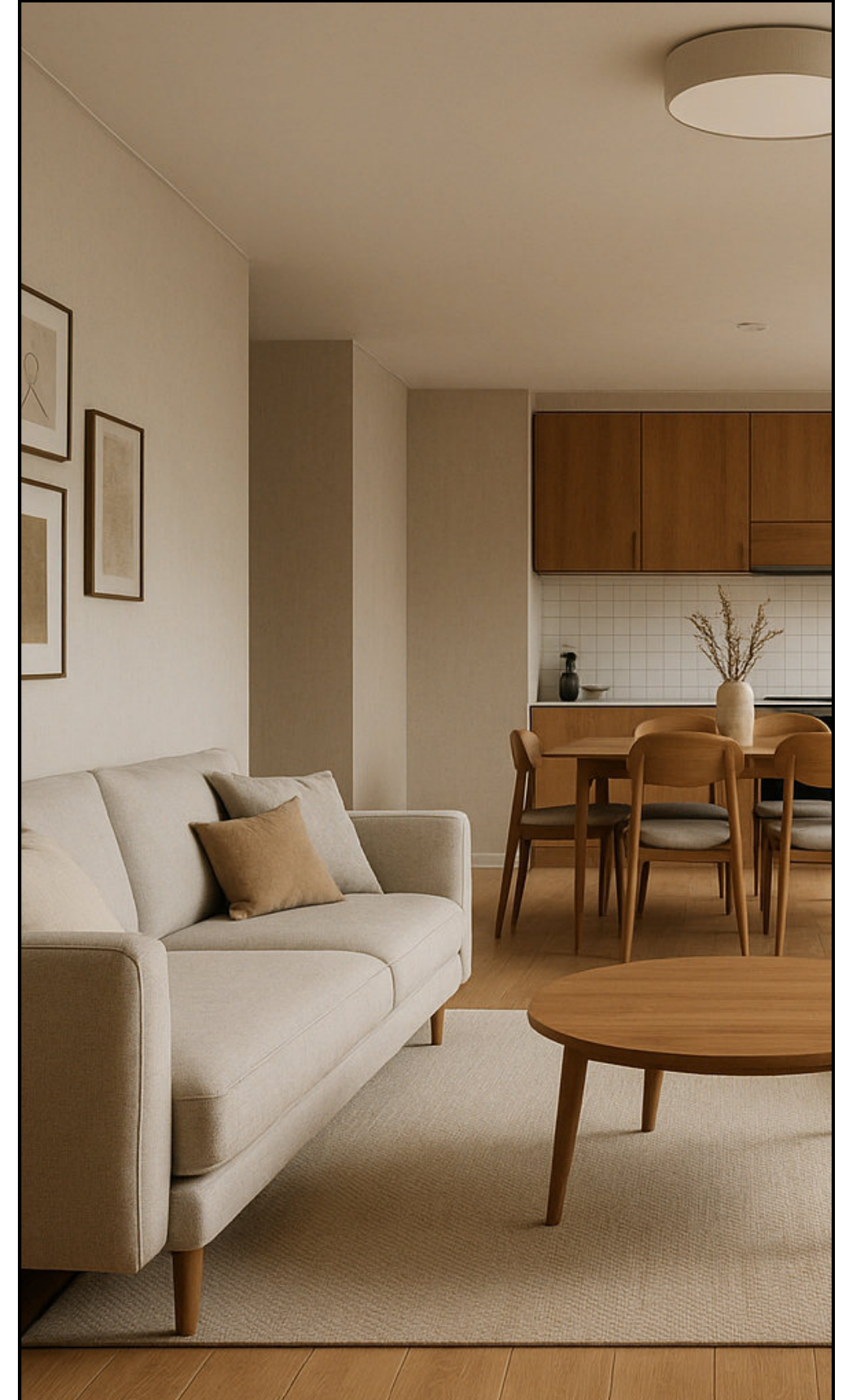
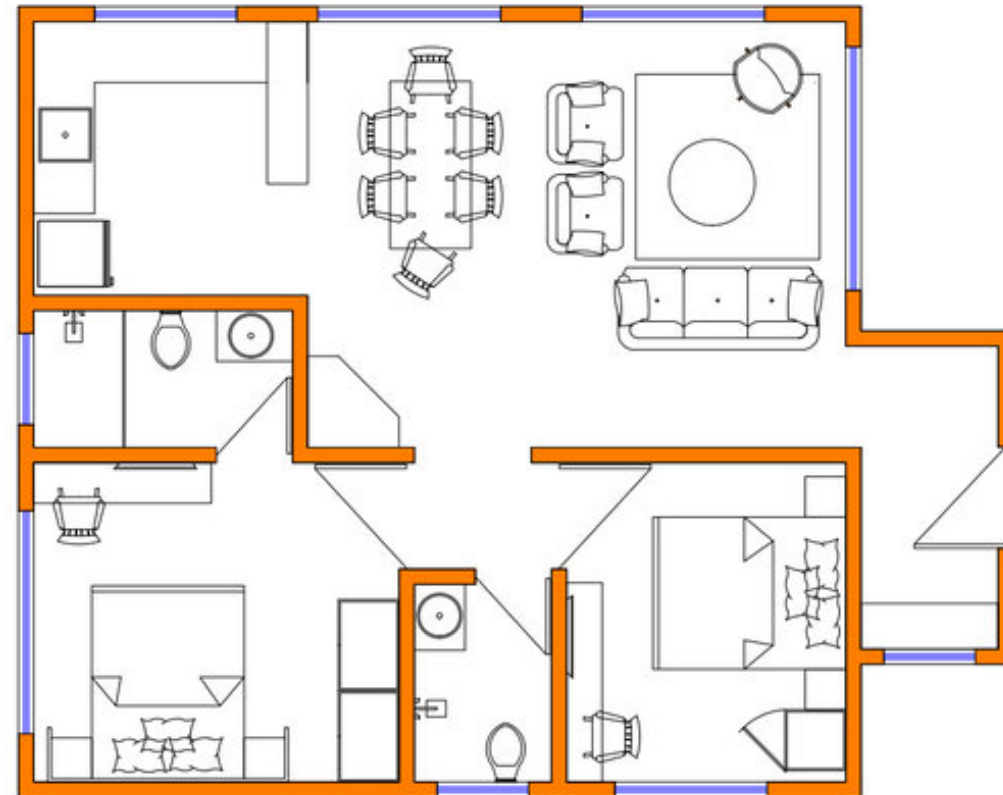
**Layout:** 2 Bedrooms + 2 Bathrooms + 1 Living room + 1 Kitchen + 1 Dining Area

## Standard Inclusions

- Bedroom: Beds, Side tables
- Bathroom: WC, Wash basins, Showers, Vents, Shower curtains, Mirrors
- Living Room: Wall cabinet, Sofa, Coffee table, Cupboard
- Kitchen: Cabinets, Wall counters, Exhaust
- Electrical: LED lighting, Sockets & switches, Wiring, Breakers, Power Inlet
- Plumbing: Cold/hot water pipe, Water inlet, Drainage
- Others: False ceiling, uPVC windows and door

## Add-ons

- Touch switches
- Split Air-conditioner
- Water Purifier
- Hot Water Geyser
- Motorised Curtains
- Solar Panels





# THE QUICKHOMES COLLECTION

Luxury built to last. The QuickHomes Collection brings villa-style elegance - crafted for generous space, lasting comfort, and refined design. Each home is built with durable materials and energy-efficient systems that keep it beautiful, strong, and sustainable year after year. With bespoke designs making it the choice for a holiday retreat or a statement residence, it delivers resort-level living with intelligent performance. **Built to perfection, timeless to live in.**

*Enquire to custom build your home*

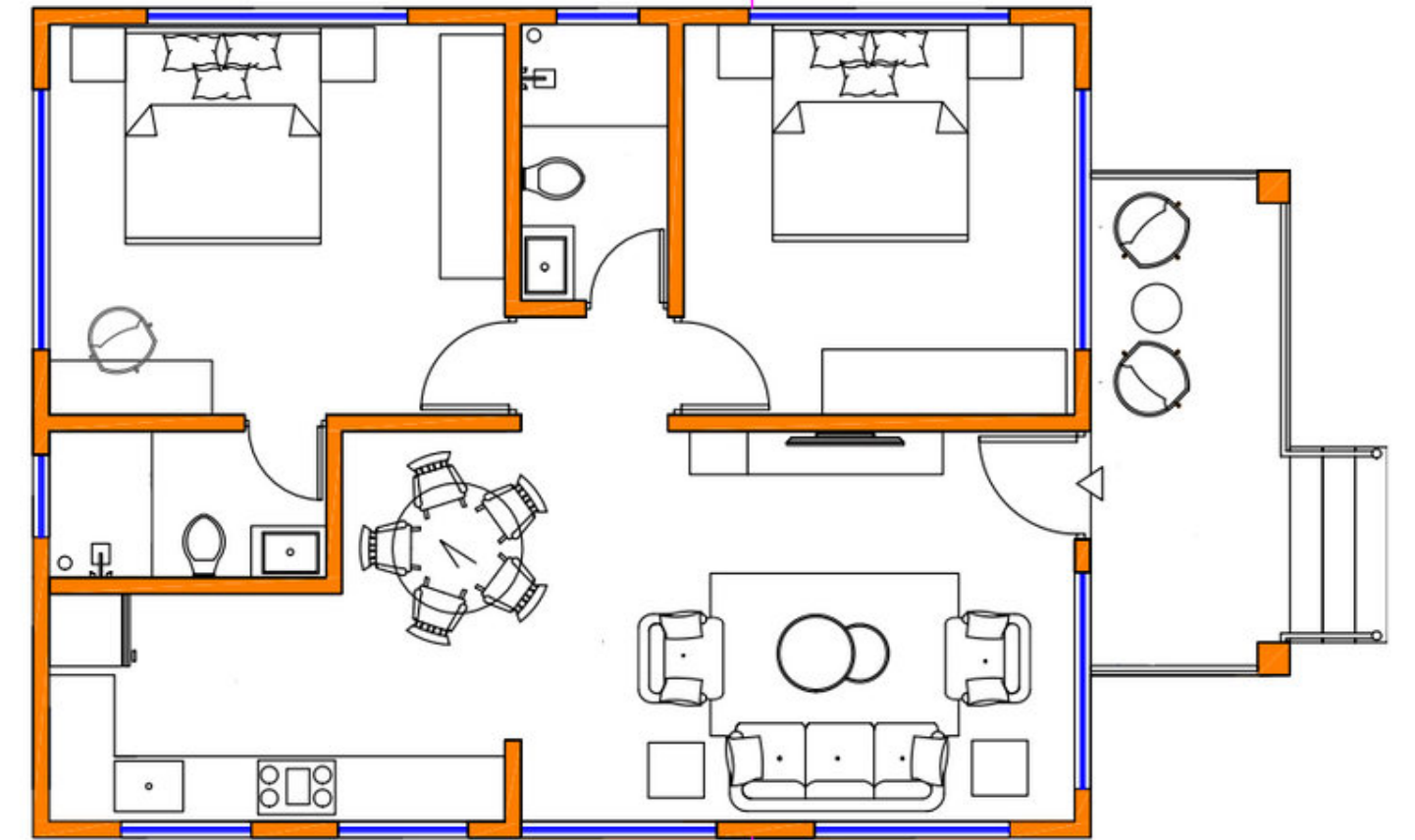






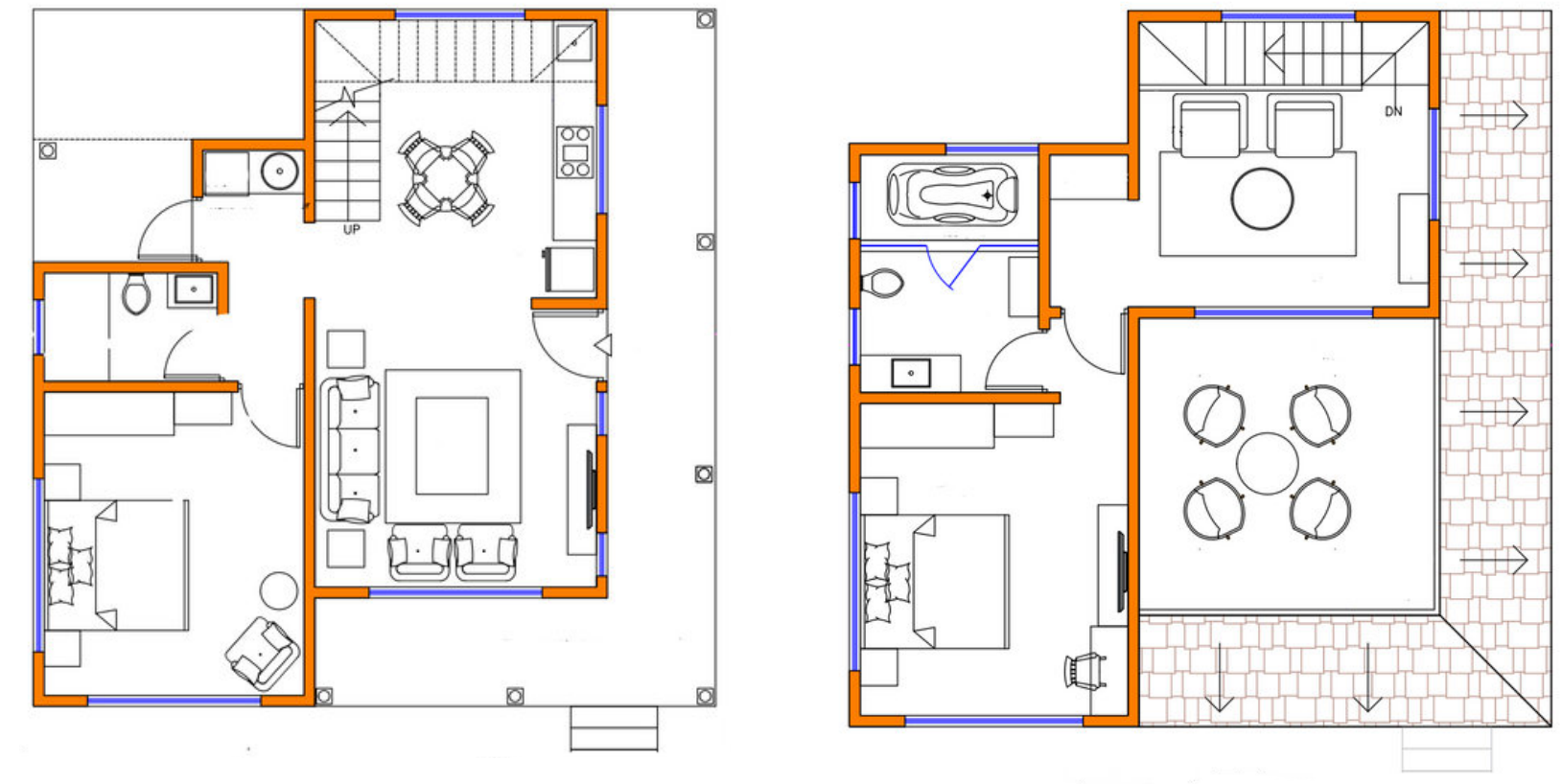
(Left) A-Frame 2 BHK house front entrance view - Total built up area of 1120 sq. ft. | (Right) A-Frame 3BHK house with balcony - Total built up area of 1475 sq. ft.





(Left) Render of 2BHK villa - Total built up area of 850 sq. ft. | (Right) Render of front view of the villa | (Right bottom) Floor plan for a proposed 2BHK villa





(Left) Render of 2BHK 2 floor house design - Total built up area of 1160 sq. ft. | (Right top) Render of back view of the house. | (Right bottom) Floor plans for a proposed 2BHK 2 floor house



A modern two-story house with large glass windows and a swimming pool at dusk. The house features a mix of light-colored walls and dark stone accents. The interior lights are on, showing a dining area and a living room. A swimming pool is in the foreground, and a well-manicured lawn is in front of it. The sky is a soft purple and blue.

For further enquiries, reach out to us at:

**QuickHomes BuildTech Private Limited**

Phone Number: +91 - 9987849216

Email: [contact@qbtglobal.com](mailto:contact@qbtglobal.com)

Website: [www.qbtglobal.com](http://www.qbtglobal.com)

Instagram: [qbt.global](https://www.instagram.com/qbt.global)

Facebook: [QuickHomes BuildTech](https://www.facebook.com/QuickHomesBuildTech)