

POLYMER
METERING
SYSTEMS

®

2KM

LIQUID
SILICONE
RUBBER

LSR

SilcoStar 924

**HYBRID DRIVEN
METERING SYSTEM
FOR PROCESSING
LSR**



WWW.2KM.ORG

**FUTURE PROOF
SOLUTIONS**



HYBRID DRIVEN TECHNOLOGY

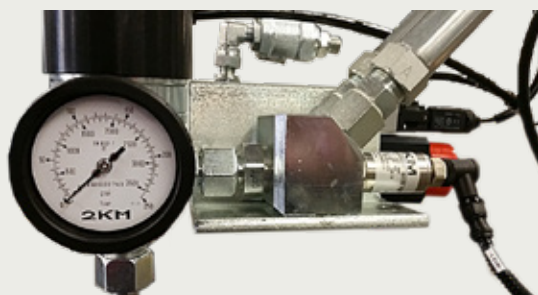
Strong hydraulic power pack with servo-electric driven gear pump 2.8 kW

OPTIMIZED BARREL EMPTYING

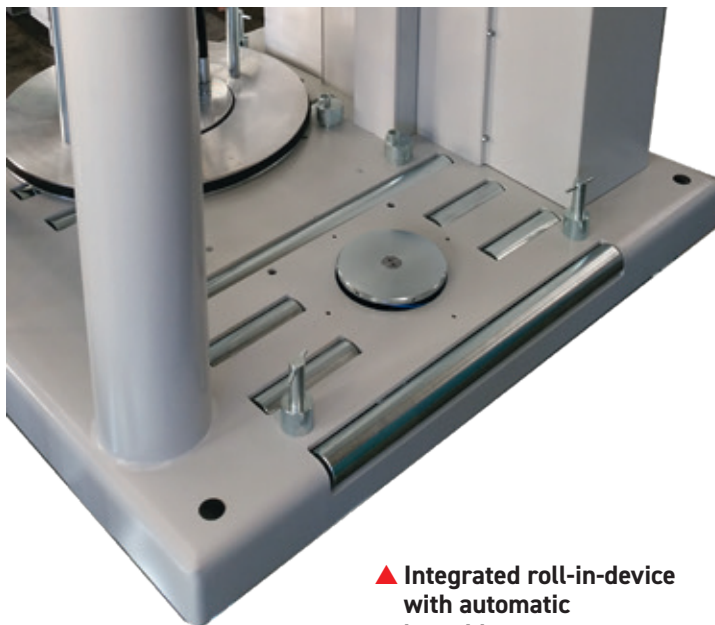
Thanks to the combination of two completely new developed systems, the residual quantity in the 200/20 l barrel can easily and comfortably be reduced to a minimum. The required follower plate deaeration in case of change of barrel is effected automatically and reduced to a minimum quantity thanks to a new technology. The barrel floor support avoids dents in the baseboard. Different filling quantities of the A and B component may be levelled out thanks to the use of a new metering pumps generation. This technology helps reduce the residual amount in the vessels to approx. 1%.

BASIC EQUIPMENT

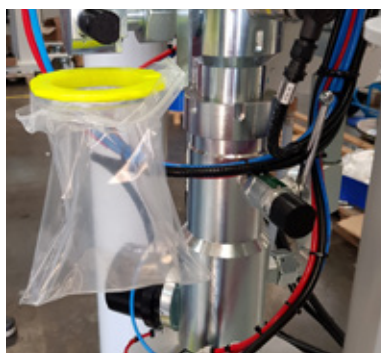
- Hybrid driven pumps (hydraulic with electro-servo drive)
- Pressure control of mixed material
- Variable mixing ratio (+/- 5 %)
- Filling level control
- 7" display with 2KM-visio software
- Adjustable mounting foot for easy placement of the machine
- Varnishing in standard paint (RAL 7035 and RAL 9003)



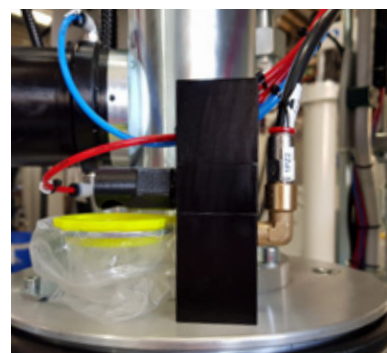
▲ Mixing block with mixed-pressure sensor

OPTIONS

▲ Integrated roll-in-device with automatic barrel bottom support

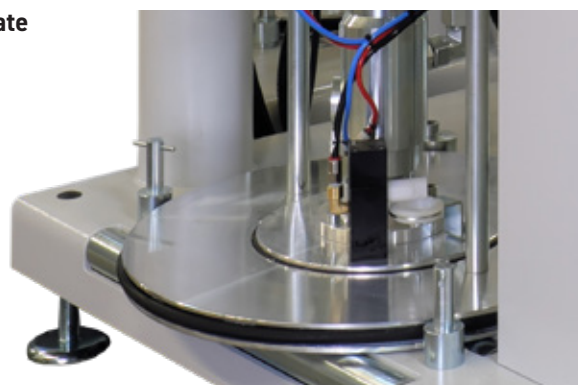


▲ Automatic pump deaeration with collection



▲ Follower plate with automatic deaeration

▶ Combo follower plate for 20 + 200 l





▲ 1 l colour supply pressure vessel with fill level indicator



▲ 10 l colour supply pump



▲ Movable 20 l colour supply pump with agitator



▲ Colour metering with metering valve and position indicator



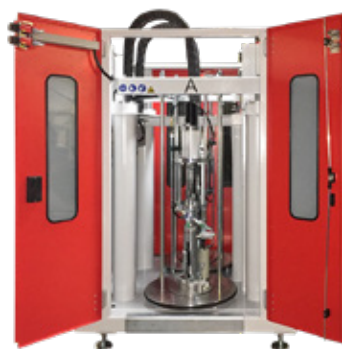
▲ Cooling jacket for static mixer



▲ Metering control of A + B



▲ Colour metering control with volume counter



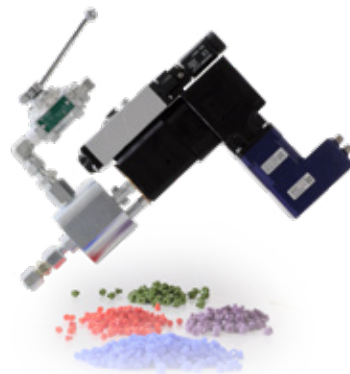
▲ Housing



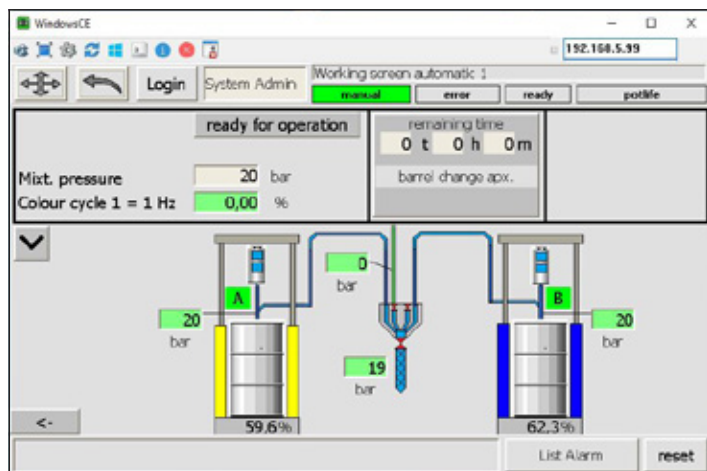
▲ CPP.reader



▲ CPP.interface



▲ Colourtech: automatic dosing stroke adjustment



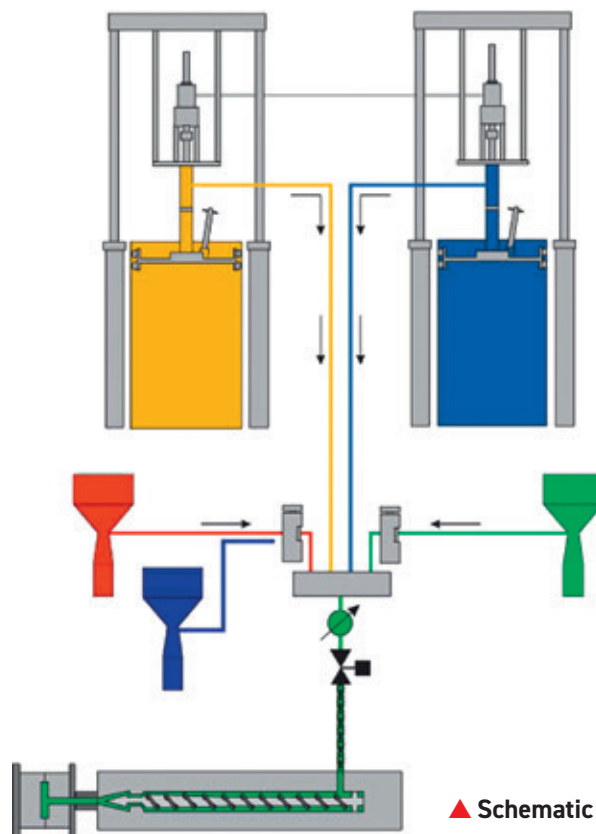
▲ Visualized 7" touch screen control (HMI)

TECHNICAL DATA

Viscosity	< 1,000,000 mPas
Output mixed material	1,000 g/min (depending on viscosity)
Mixing ratio	1:1 (variable +/- 5 %)
Colour metering	0.3 – 4 %

CONSUMPTION / CONNECTIONS

Actuation	hybrid (hydraulic with electro-servo)
Electrical data	380 – 480 VAC, 50 – 60 Hz (3P + PE), 16 A
Connection LIM machine	24 V
Pneumatic system	R1/4", 6 bar, low
Weight	appr. 800 kg
Dimensions	1,030 x 1,112 x 1,950 mm [W x D x H] (Attention: height + 950 mm if pump completely lifted!)



▲ Schematic

ADVANTAGES

- Pressure control of mixed material to adjust an homogenous density of LSR in the screw of the injection moulding machine
- Possible capacity savings through totally even, complete and constant emptying of the supply vessels
- Integrated roll-in device with automatic barrel bottom support to reduce the residual amount of material
- Marginal space required
- Noise reduction gratitude to detachable hydraulic system and the electro-servo drive

POSSIBLE ANNUAL SAVINGS IN A 3-SHIFT OPERATION

Shot weight 12 g, barrel change: once in 7 days
Savings: approx. 8,300.00 €/a

Shot weight 5 g, barrel change: once in 4 days
Savings: approx. 18,200.00 €/a

Shot weight 50 g, barrel change: once in 2 days
Savings: approx. 32,850.00 €/a

(calculation may vary due to cost of material)