

POLYMER  
METERING  
SYSTEMS

®

**2KM**

LIQUID  
SILICONE  
RUBBER

**LSR**

# SilcoStar e-Flow

SERVO ELECTRIC  
DRIVEN METERING  
SYSTEM WITH  
VARIABLE  
MIXING RATIO



[WWW.2KM.ORG](http://WWW.2KM.ORG)

FUTURE PROOF  
SOLUTIONS



## OPTIONS

### ELECTRO SERVO DRIVES

- Servo electric driven linear drive with fixing brake and planetary roller screw actuator
- Calculated life time of 10 years (at max. pressure of 200 bar and a max. consumption of 49 tons per year)

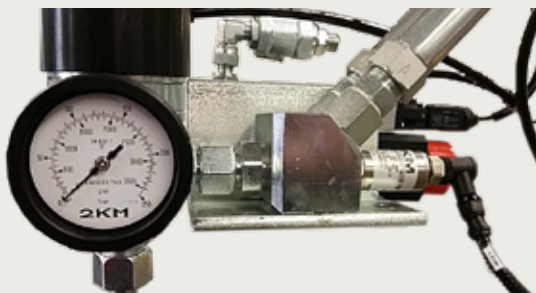
### OPTIMIZED BARREL EMPTYING

Thanks to the combination of two completely new developed systems the residual quantity in the 200 l barrel can easily and comfortably be reduced to a minimum. The required follower plate deaeration in case of change of barrel is effected automatically (optional) and reduced to a minimum quantity thanks to a new technology. The barrel floor support avoids dents in the baseboard.

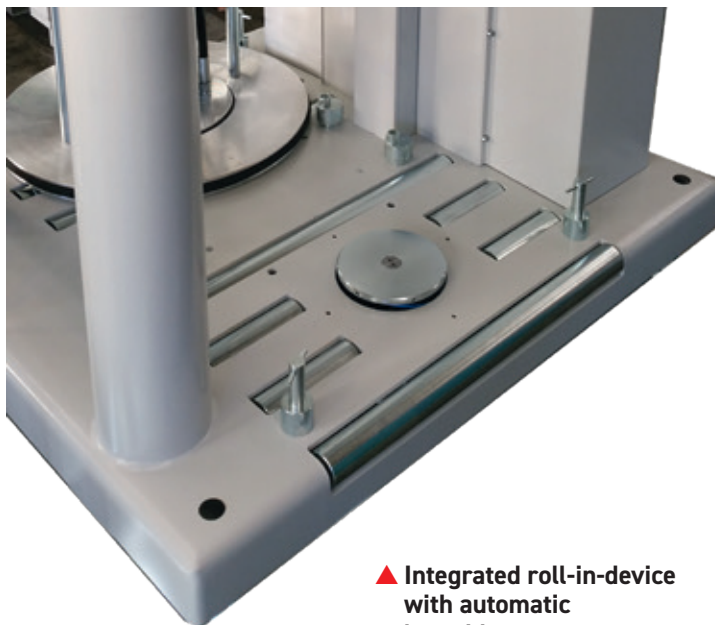
Different filling quantities of the A and B component may be balanced out by using of gravimetric adjustment. This technology helps to reduce the residual amount in the empty drum to < 1 %.

### BASIC EQUIPMENT

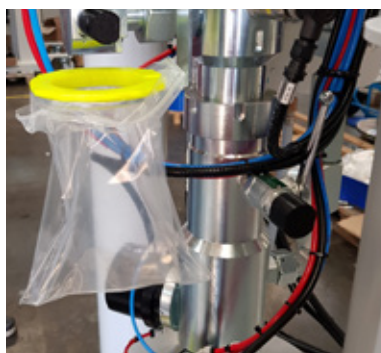
- Servo electric driven pumps
- Pressure sensors for lack of material and overpressure
- Pressure control of mixed material
- Variable mixing ratio
- Filling level control
- 10" display with 2KM-visio software
- Adjustable mounting foot for easy placement of the machine
- Varnishing in standard paint (RAL 7035 + 9003)



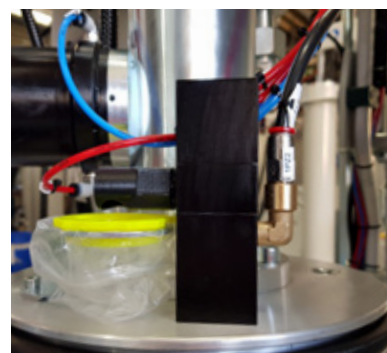
▲ Mixing block with mixed-pressure sensor



▲ Integrated roll-in-device with automatic barrel bottom support

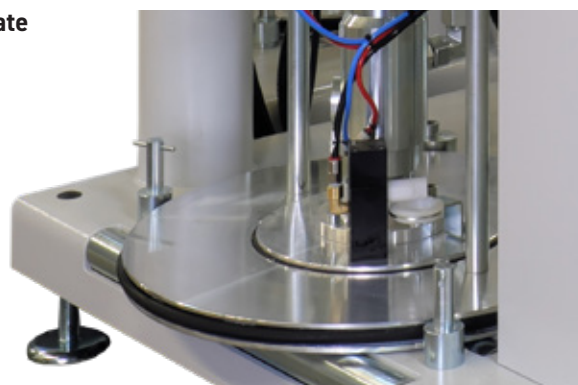


▲ Automatic pump deaeration with collection



▲ Follower plate with automatic deaeration

▶ Combo follower plate for 20 + 200 l





▲ 1 l colour supply pressure vessel with fill level indicator



▲ 10 l colour supply pump



▲ Movable 20 l colour supply pump with agitator



▲ Colour metering with metering valve and position indicator



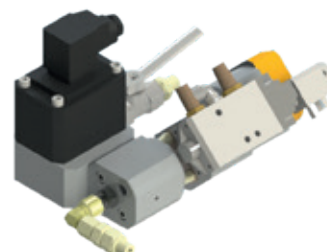
▲ Cooling jacket for static mixer



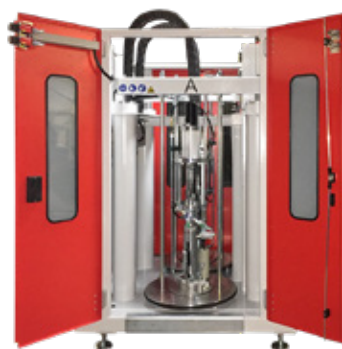
▲ Metering control of A + B



▲ Colour metering control with volume counter



▲ Housing

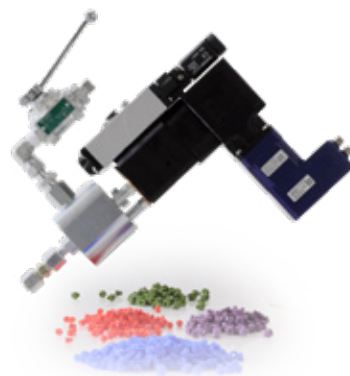


▲ CPP.reader



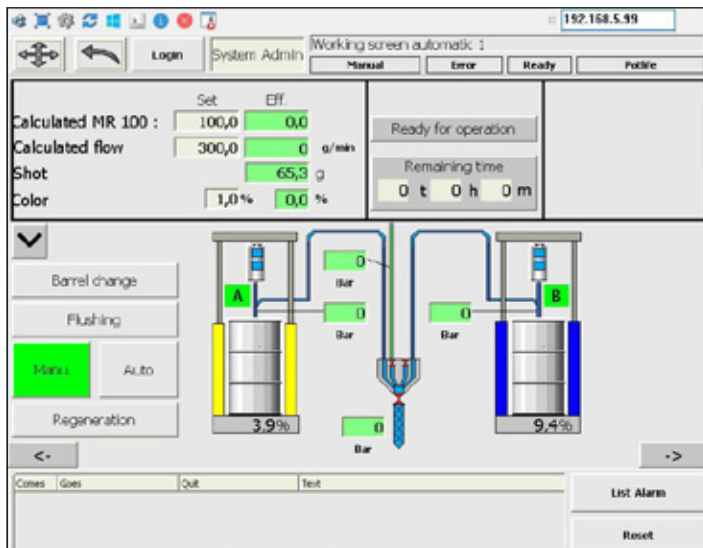
**OPC UA**  
**EUROMAP 82.3**

▲ CPP.interface



▲ Colourtech: automatic adjustment of dosing stroke





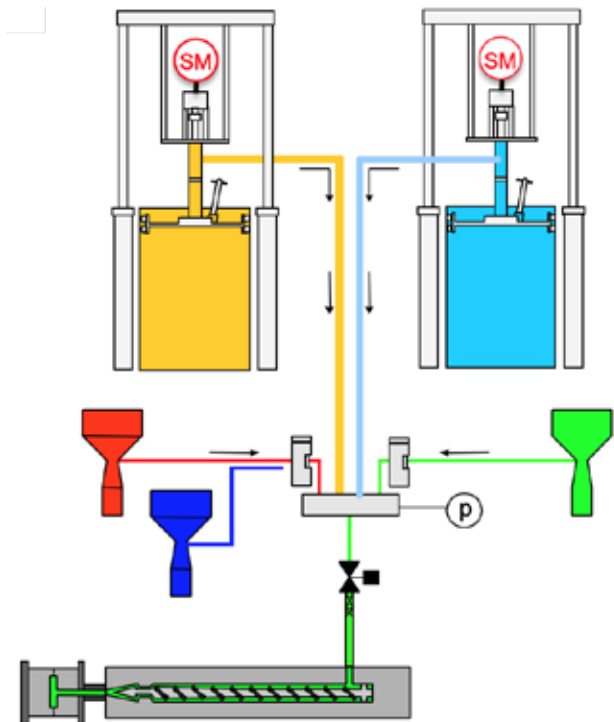
▲ Visualized 10" touch screen control (HMI)

#### TECHNICAL DATA

Viscosity	< 1,000,000 mPas
Output mixed material	1,000 g/min (depending on viscosity)
Mixing ratio	1:1 (variable)
Colour metering	0.3 – 4 %

#### CONSUMPTION / CONNECTIONS

Actuation	servo electric
Electrical data	380 – 480 VAC, 50 – 60 Hz (3P + PE), 16 A
Connection LIM machine	24 V
Pneumatic system	R1/4", 6 bar low
Weight	730 kg
Dimensions	1,030 x 1,112 x 1,950 mm [W x D x H] (Attention: height + 950 mm if pump completely lifted!)



▲ Schematic

#### ADVANTAGES

- Potential capacity savings through totally and constant emptying of the supply vessels
- Integrated roll-in device with automatic barrel bottom support
- 2-sides operation
- Marginal space required
- Low energy consumption

#### POSSIBLE ANNUAL SAVINGS IN A 3-SHIFT OPERATION

Shot weight 12 g, barrel change: once in 7 days

**Savings: approx. 8,300.00 €/a**

Shot weight 5 g, barrel change: once in 4 days

**Savings: approx. 18,200.00 €/a**

Shot weight 50 g, barrel change: once in 2 days

**Savings: approx. 32,850.00 €/a**

(calculation may vary due to cost of material)