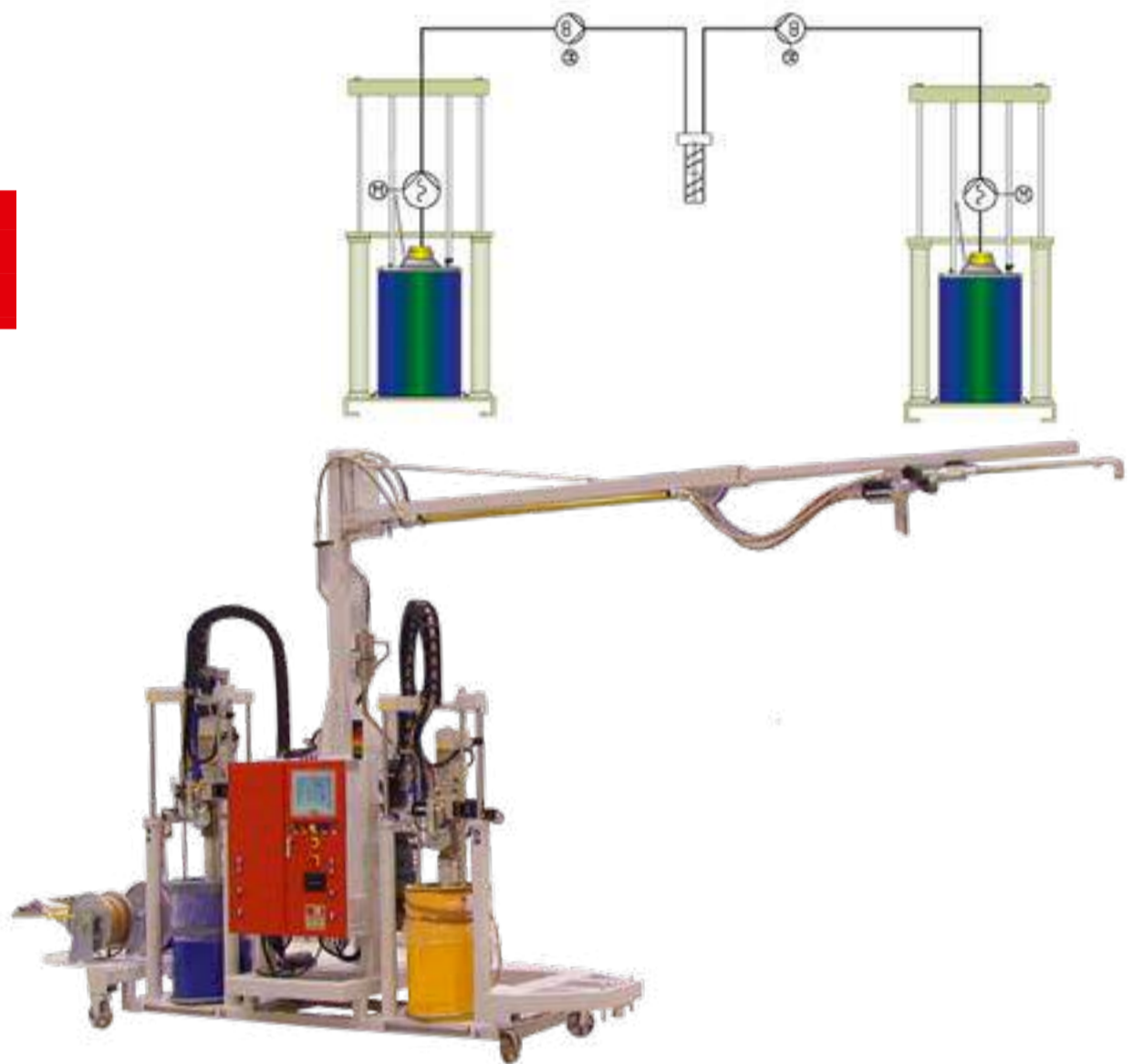


PolyMix 2000

**ELECTRICALLY ACTUATED METERING UNIT
FOR THE PROCESSING OF HIGH-VISCOSITY
EP AND PUR BONDING PASTE**

- Highest performance with 2KM 4-pump-technology.
- Robust and highly approved metering system for the bonding of blades for the windpower industry.
- Progressive cavity pumps feed the material pressure-regulated directly out of the 200l drums to the gear metering pumps.
- Output range and mixing ratio can be adjusted variable



PolyMix 2000 R

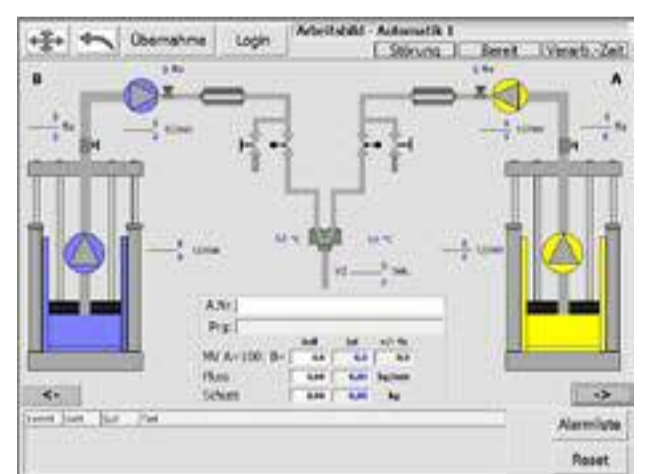


Supply system



back view with supply couplings, gear metering pumps, flow meters and pressure regulators for floating follower plates.

- The PolyMix 2000R is equipped with refillable vessels. This way, the usual change of barrels during bonding process is no longer required.
- Leakage-free rapid couplers connect the supply system with the PolyMix 2000 R unit.
- Thanks to the available level control it is possible to check whether the amount of adhesive is sufficient to finish the current blade bonding process



Visualized process control

Overview

PolyMix

ResinMix

ResinMix DI

VacuumCube