

# PERMANENT HOUSING CASE STUDY



**Title:** Local Solutions, Mount Desert Island, Maine, Supportive Housing for Intellectually and Developmentally Disabled Adults

**Property Name:** Parish House

**Basic Description:** Preservation and Rehabilitation project, six 1-bedroom units with shared kitchen and community space

**Developer:** Community Housing of Maine (CHOM)

**Property Management:** Community Housing of Maine (CHOM)

**Service Provider:** Volunteers of America (VOA)

**Tenant Profile:** Adults with intellectual and developmental disabilities

**Service Approach:** A plethora of supportive services are available to tenants onsite, including assistance with independent living skills, employment navigation and opportunities, and community engagement. VOA is funded through the Maine Department of Health and Human Services to provide onsite staff at the Parish House and manage service delivery to tenants.

## Project Background:

In 2011, a group of concerned parents came together in Mount Desert Island – a small, rural community off the coast of Maine with a population of 10,615 – to advocate for supportive housing opportunities for adults with intellectual and developmental disabilities (ID/D). Together, they created a grassroots nonprofit – Local Solutions – to advocate for housing and service needs for their disabled, adult children. Aging parents shared concerns about their adult children when the parents passed away and community partners banded together to create a renovation project – the Parish House – to ensure needed supportive housing for ID/D adults was provided. Prior to the Parish House development, no other supportive housing options for ID/D adults existed in the Mount Desert Island community.

The Parish House stood in the Mount Desert Island community for well over 100 years, after it was donated to St. Saviour's Episcopal Church by a grieving mother who had lost her daughter. While the Parish House had been used for many years as a community gathering and educational space for the church, the building was in serious decline and needed restoration. Responding to the grassroots efforts of Local Solutions, St. Saviour's Episcopal Church donated the Parish House to offer the infrastructure needed to create ID/D supportive housing.

---

## Key Features and Impact:

- Preservation and rehabilitation project of a historic home
- Development costs for the Parish House project were significantly mitigated, due to the building donation from St. Saviour Episcopal Church of Bar Harbor
- Shared kitchen and community space for tenants to engage with one another
- Onsite staff residence
- Tenants can access and live in Parish House through project-based, Section 8 vouchers
- Since the opening in 2017, all tenants have remain stably housed

# FINANCING INFORMATION

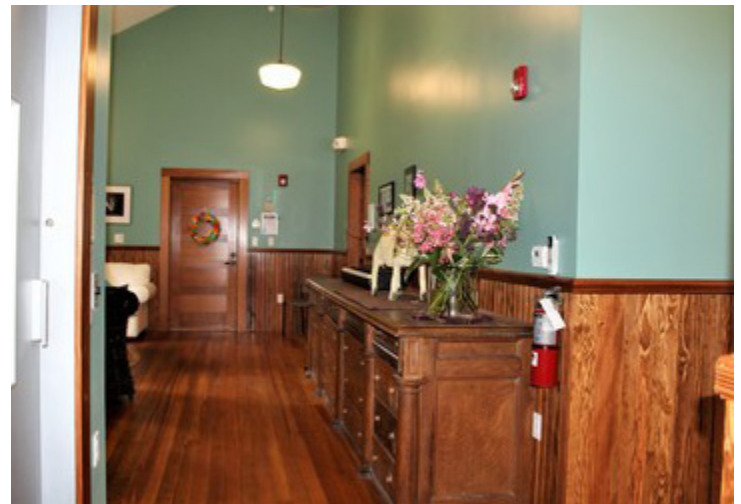
## Operations Budget

Funding Source	Amount Received
Local Private Fundraising	\$200,000
Section 8 Vouchers	6
<b>Total</b>	<b>\$200,000</b>

## DEVELOPER PROFILE

Community Housing of Maine (CHOM) is a nonprofit housing developer with extensive experience housing vulnerable populations since 1993. CHOM is currently housing more than 1,000 of Maine's most vulnerable people and is the largest housing provider for homeless populations (including Veterans and domestic violence survivors) in the state. CHOM has created, owns, and manages 78 housing sites in 31 communities spanning 10 counties with 747 units of affordable housing.

## PROJECT PICTURES



The development of each case study featured was made possible by the U. S. Department of Housing and Urban Development's Rural Capacity Building Program.

*"Connecting Communities at the Intersection of Housing & Health"*

**Collaborative Solutions, Inc.**  
P.O. Box 130159  
Birmingham, AL 35213  
(205) 939-0411  
[www.collaborative-solutions.net](http://www.collaborative-solutions.net)