



# TRANSFORMING TALENT'S A - M A Z E 2022 NAVIGATION GUIDE

MOVING FROM...  
TRANSACTION TO TRANSFORMATION  
INTENTION INTO REALITY  
AN IDEA TO A MOVEMENT -  
THAT IS THE AMAZE-ING JOURNEY OF 2022.

TRANSFORMATION  
PASSPORT

# TRANSFORMING TALENT'S A - M A Z E 2022 JOURNEY



A-MAZE 2022 JOURNEY  
IS A SERIES OF COLLABORATIVE  
#DOITTOLEARNIT  
EVENTS  
TO EXPERIENCE THE DIFFERENCE  
BETWEEN

"SO YOU SAY YOU ARE GONNA CHANGE..."  
AND  
BEING THE CHANGE.

READY TO COME ABOARD AND  
BE A-MAZED?

TRANSFORMATION  
PASSPORT

# A-MAZE PORTS OF CALL

*Your A-Mazing Journey: every 4th Thursday of the Month*

JANUARY

*Setting Sail on your A-Maze 2022 Journey*

FEBRUARY

*Barriers to Transformation*

MARCH

*Learning happens in the "wobble"*

APRIL

*Vitality -  
Viability -  
Vulnerability*

MAY

*Talent Development in  
A- MAZE  
-ment*

JUNE

*No Diggity No Doubt:  
Workplace Dignity*

JULY

*Scavenger Hunt  
Teaming*

AUGUST

*Co-Creator.Space:  
Evolution & Innovation*

SEPTEMBER

*Empowerment League*

OCTOBER

*Show-WEEN:  
Build Confidence -  
Build Competence*

NOVEMBER

*Working Remotely -  
Being Connected*

DECEMBER

*A-Maze 2022 Journey  
in Review*

# TRANSFORMING TALENT'S A - M A Z E 2022 JOURNEY

## TRANSFORMATION PASSPORT

*Your Chief Talent Navigator, Elizabeth Lembke has the charts and the #hashtags to captain you through the Transforming Talent Seas.*

**TRANSFORMING TALENT PRINCIPLES**  
*will guide our travel from port to port as we bring the # to life for Transforming Talent.*

### TRANSFORMING TALENT *Principles*

- MINDSET FIRST
- TALENT IS EVERYWHERE
- BUILD CONFIDENCE, BUILD COMPETENCE
- THE FUTURE OF WORK IS SOCIAL, ADAPTIVE, AND PERSONAL
- INNOVATION CAN HAPPEN ANYWHERE
- THE BEST IDEAS COME OUT OF CREATIVE COLLABORATION





SETTING SAIL ON  
YOUR  
A-MAZE 2022  
JOURNEY



TRANSFORMING TALENT'S  
A-MAZE  
2022  
JOURNEY

- WHAT WOULD YOU TRY IF YOU KNEW YOU COULD NOT FAIL?
- WHAT WOULD YOU LIKE TO BE YOUR BIGGEST TRIUMPH BY THE END OF THE YEAR?
- WHAT ADVICE WOULD YOU LIKE TO GIVE YOURSELF AS YOU BEGIN A-MAZE 2022?
- WHAT WOULD YOU BE MOST HAPPY ABOUT GOING INTO THE BRAVE ZONE OF LEARNING FOR?
- WHAT WATERS WOULD YOU LIKE TO HAVE TESTED BY THE END OF A-MAZE 2022?

*@ElizabethLembke*

SU	MO	TU	WE	TH	FR	SA
26	27	28	29	30	31	1
2	3	4	5	6	7	8
9	10	11	12	13	14	15
16	17	18	19	20	21	22
23	24	25	26	 27	28	29
30	31	1	2	3	4	5

WHAT DO YOU WANT TO LEARN?:  
.....  
.....  
.....

HOW WILL YOU BE ABLE TO SEE IT?:  
.....  
.....



A - M a z e  
2 0 2 2



BARRIERS TO



TRANSFORMATION

SU	MO	TU	WE	TH	FR	SA
30	31	1	2	3	4	5
6	7	8	9	10	11	12
13	14	15	16	17	18	19
20	21	22	23	24	25	26
27	28	1	2	3	4	5

WHAT DO YOU WANT TO LEARN?:

.....

.....

.....

HOW WILL YOU BE ABLE TO SEE IT?:

.....


.....



A - M a z e  
2 0 2 2

LEARNING HAPPENS IN THE "WOBBLE"



SU	MO	TU	WE	TH	FR	SA
27	28	1	2	3	4	5
6	7	8	9	10	11	12
13	14	15	16	17	18	19
20	21	22	23	 24	25	26
27	28	29	30	31	1	2

WHAT DO YOU WANT TO LEARN?:

.....

.....

.....

.....

HOW WILL YOU BE ABLE TO SEE IT?:

.....

.....

.....





VITALITY -  
VIABILITY -  
VULNERABILITY

**MY LIFE** *JUST BREATHE*

"It's not enough to be busy, so are the ants. The question is, what are we busy about?"  
*Henry David Thoreau*

TIME MONDAY TUESDAY DAY


**SELF ISOLATION**  
**STAY HOME**  
PROTECT YOUR SPACE  
SOCIAL DISTANCING

**The Imperative of our Time**  
"Timeboxing" the Virus and the Economic Shock

**1**  
Safeguard our lives  
1a. Suppress the virus as fast as possible  
1b. Expand testing, quarantining and treatment capacity  
1c. Find "cures"; treatment, drugs, vaccines

**2**  
Safeguard our livelihoods  
2a. Support people and businesses affected by lockdowns  
2b. Prepare to get back to work safely when the virus abates  
2c. Prepare to scale the recovery away from a -8 to -13% trough

*Through this together*  
@ELIZABETHLEMBKE

SU	MO	TU	WE	TH	FR	SA
27	28	29	30	31	1	2
3	4	5	6	7	8	9
10	11	12	13	14	15	16
17	18	19	20	21	22	23
24	25	26	27	 28	29	30

WHAT DO YOU WANT TO LEARN?:

.....

.....

.....

HOW WILL YOU BE ABLE TO SEE IT?:

.....

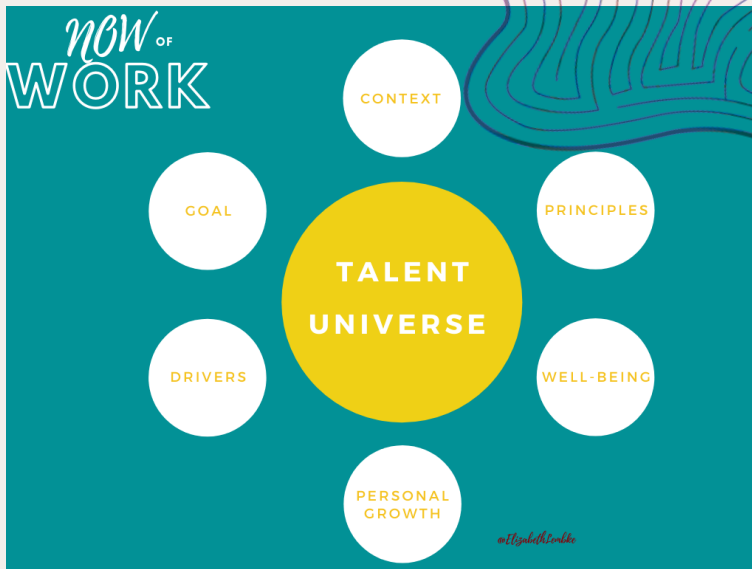
.....




A - M a z e  
2 0 2 2



TALENT  
DEVELOPMENT



IN  
A-MAZE  
-MENT

SU	MO	TU	WE	TH	FR	SA
1	2	3	4	5	6	7
8	9	10	11	12	13	14
15	16	17	18	19	20	21
22	23	24	25	 26	27	28
29	30	31	1	2	3	4

WHAT DO YOU WANT TO LEARN?:

.....

.....

.....

.....

HOW WILL YOU BE ABLE TO SEE IT?:

.....

.....

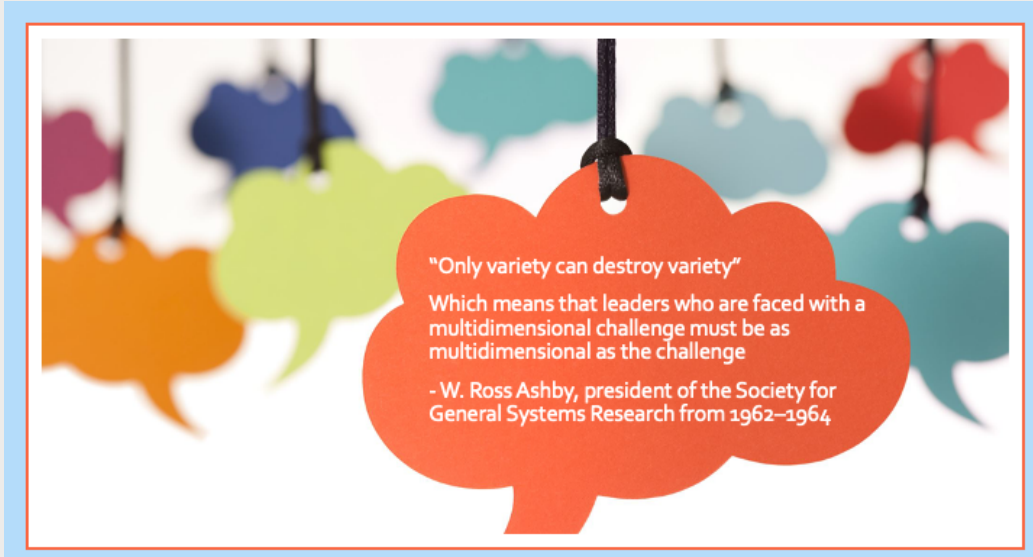
.....





**RESPECT**

# NO DIGGITY NO DOUBT: WORKPLACE DIGNITY



SU	MO	TU	WE	TH	FR	SA
29	30	31	1	2	3	4
5	6	7	8	9	10	11
12	13	14	15	16	17	18
19	20	21	22	 23	24	25
26	27	28	29	30	1	2

WHAT DO YOU WANT TO LEARN?:  
.....  
.....  
.....

HOW WILL YOU BE ABLE TO SEE IT?:  
.....  
.....





The best teaming is like a Scavenger Hunt:



Clear eye on the challenge



Associative thinking outside of the box is expected



The power of the team is leveraged in creative ways



Mistakes are seen as part of learning



All have a sense of ownership for reaching the goal



The energy derived from the fun of the challenge motivates to new strengths.

@ElizabethLembke

# SCAVENGER HUNT

# TEAMING

SU	MO	TU	WE	TH	FR	SA
26	27	28	29	30	1	2
3	4	5	6	7	8	9
10	11	12	13	14	15	16
17	18	19	20	21	22	23
24	25	26	27	 28	29	30
31	1	2	3	4	5	6

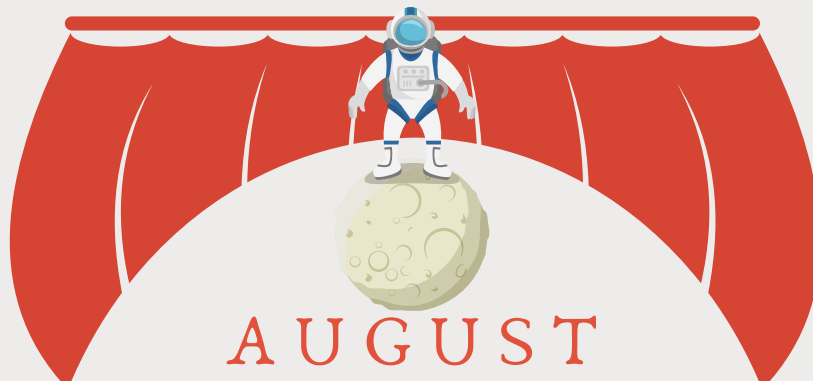
WHAT DO YOU WANT TO LEARN?:

HOW WILL YOU BE ABLE TO SEE IT?:




@ElizabethLembke

A - M a z e  
2 0 2 2



Co-Creator.Space

EVOLUTION  
INNOVATION

SU	MO	TU	WE	TH	FR	SA
31	1	2	3	4	5	6
7	8	9	10	11	12	13
14	15	16	17	18	19	20
21	22	23	24	 25	26	27
28	29	30	31	1	2	3

WHAT DO YOU WANT TO LEARN?:

.....

.....

.....

.....

HOW WILL YOU BE ABLE TO SEE IT?:

.....

.....

.....



A - M a z e  
2 0 2 2




EMPOWERMENT

LEAGUE

An Invitation to Brave Space by Micky ScottBey Jones

Together we will create brave space  
 Because there is no such thing as "safe space"  
 We exist in the real world  
 We all carry scars and we have all caused wounds.  
 In this space  
 We seek to turn down the volume of the outside world,  
 We amplify voices that fight to be heard elsewhere,  
 We call each other to more truth and love  
 We have the right to start somewhere and continue to grow.  
 We have the responsibility to examine what we think we know.  
 We will not be perfect.  
 This space will not be perfect.  
 It will not always be what we wish it to be  
 But  
 It will be our brave space together,  
 And  
 We will work on it side by side.



SU	MO	TU	WE	TH	FR	SA
28	29	30	31	1	2	3
4	5	6	7	8	9	10
11	12	13	14	15	16	17
18	19	20	21	22	23	24
25	26	27	28	 29	30	1

WHAT DO YOU WANT TO LEARN?:

.....  
 .....  
 .....

HOW WILL YOU BE ABLE TO SEE IT?:

.....  
 .....



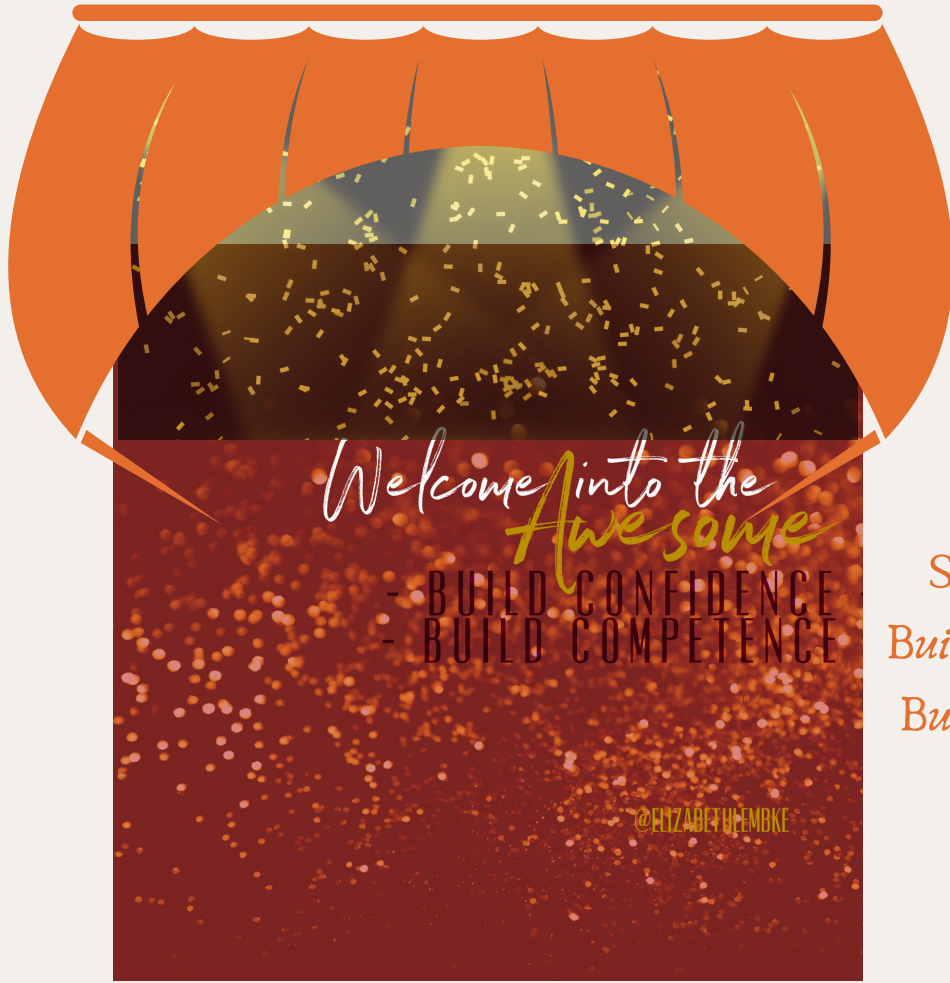
A - M a z e

2 0 2 2


@ElizabethLembke



# OCTOBER



Show-WEEN:  
Build Confidence -  
Build Competence

SU	MO	TU	WE	TH	FR	SA
25	26	27	28	29	30	1
2	3	4	5	6	7	8
9	10	11	12	13	14	15
16	17	18	19	20	21	22
23	24	25	26	 27	28	29
30	31	1	2	3	4	5

WHAT DO YOU WANT TO LEARN?:

.....

.....

.....

HOW WILL YOU BE ABLE TO SEE IT?:

.....

.....



A - M a z e

2022



# A-MAZE 2022 JOURNEY

YOUR  
&  
OUR



IN  
REVIEW

TRANSFORMING TALENT'S  
A-MAZE  
2022  
JOURNEY

- WHAT WOULD YOU TRY IF YOU KNEW YOU COULD NOT FAIL?
- WHAT DO YOU SEE AS YOUR BIGGEST TRIUMPH BY THE END OF THE YEAR?
- WHAT ADVICE WOULD YOU LIKE TO GIVE YOURSELF AS YOU END A-MAZE 2022?
- WHAT ARE YOU MOST HAPPY ABOUT GOING INTO THE BRAVE ZONE OF LEARNING FOR?
- WHAT WATERS DID YOU TEST BY THE END OF A-MAZE 2022?

@ElizabethLembke

SU	MO	TU	WE	TH	FR	SA
27	28	29	30	1	2	3
4	5	6	7	8	9	10
11	12	13	14	15	16	17
18	19	20	21	22	23	24
25	26	27	28	29	30	31

WHAT DO YOU WANT TO LEARN?:

.....

.....

.....

HOW WILL YOU BE ABLE TO SEE IT?:

.....

.....



A - M a z e  
2 0 2 2

# YOUR A-MAZE JOURNEY

WHAT DO YOU WANT TO LEARN?  
HOW WILL YOU BE ABLE TO SEE IT?

JANUARY

*Setting Sail on your A-  
Maze 2022 Journey*

FEBRUARY

*Barriers to  
Transformation*

MARCH

*Learning happens in the  
"wobble"*

APRIL

*Vitality - Viability -  
Vulnerability*

MAY

*Talent Development in  
A- MAZE  
ment*

JUNE

*No Diggity No Doubt  
Workplace Dignity*

JULY

*Scavenger Hunt  
as Teaming*

AUGUST

*Co-Creator.Space:  
Evolution & Innovation*

SEPTEMBER

*Empowerment League*

OCTOBER

*Show-WEEN:  
Build Confidence -  
Build Competence*

NOVEMBER

*Working Remotely -  
Being Connected*

DECEMBER

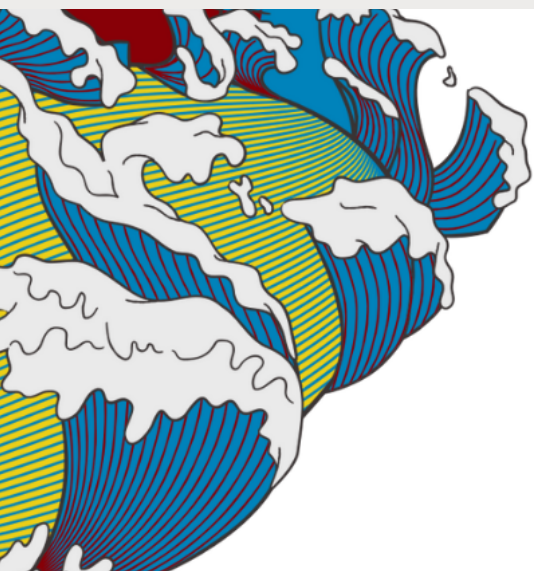
*A-Maze 2022 Journey  
in Review*

# TRANSFORMING TALENT'S A - MAZE 2022 JOURNEY



A-MAZE 2022 JOURNEY  
IS A SERIES OF COLLABORATIVE  
#DOITTOLEARNIT  
EVENTS.

TO RESERVE YOUR A-MAZE 2022 SEAT,  
CONTACT YOUR  
CHIEF TALENT NAVIGATOR  
ELIZABETH LEMBKE  
OR  
REGISTER VIA [EVENTBRITE](#) OR [LINKEDIN](#)



TRANSFORMING TALENT  
DIPL.-PSYCH.  
*Elizabeth M. Lembke*  
CHIEF TALENT NAVIGATOR

[www.transformingtalent.co](http://www.transformingtalent.co) (EN) [elembke@transformingtalent.de](mailto:elembke@transformingtalent.de)  
[www.transformingtalent.de](http://www.transformingtalent.de) (GER) +49 163 964 5337