



Bendigo Baseball Association

Governing Document #9

Senior Playing Rules

Contents

Sect#	
	Glossary of Terms
1.0	Preamble
2.0	Manager's Responsibility
3.0	Scorer's Responsibilities
4.0	Starting Matches
5.0	Pre — Match Diamond Warmup
6.0	Pre – Match Start: Plate Meeting
7.0	Designated Hitter Rule
8.0	Legal Game or Regulation Game
9.0	Substitute Runner for Catcher
10.0	Five Minute Rule
11.0	One – Sided Games (10 Run Rule)
12.0	Match Report Sheets and BBA Report Card (BBA Form #7)
13.0	Match Report for the Media
14.0	Reported Persons or Clubs
15.0	Most Valuable Player
16.0	Ground Equipment
17.0	Home Team at Neutral Venue
18.0	Uniforms and Equipment
19.0	Offensive Visits to the Pitcher by Pitching Coach or Manager
20.0	Time Wasting
21.0	Intentional Walks
22.0	Playing Field Dimensions

Interpretations

- 'ABF' means the Australian Baseball Federation
- 'BBA' means the Bendigo Baseball Association Inc.
- 'BV' means Baseball Victoria
- 'Home Manager' means the designated home team manager if playing on a neutral ground
- 'SR' means a Substitute Runner shall be used for the catcher when there are 2 outs if that player gets on base
- Any reference to 'Division 3' in these rules means the lowest senior playing division whether that be a three division competition or a two division competition.

1.0 Preamble

The Senior Playing competition rules are to be read in conjunction with the Governing Documents of the BBA and the Official Rules of Baseball.

2.0 Manager's Responsibility

- 2.1 To complete a line-up in quadruplicate.
- 2.2 To provide the scorers with his team's batting order and defence.
- 2.3 To meet the Umpire in Chief at home plate when he arrives to start the game.
- 2.4 To present the Umpire in Chief and the opposing manager their line-up.
- 2.5 To advise the Umpire in Chief and the opposing manager any ground rules unique to their venue. If these ground rules are acceptable to the opposing manager, they shall be legal. If these ground rules are unacceptable to the opposing manager, the decision lies with the Umpire in Chief. This ruling cannot conflict with official Rules of Baseball.
- 2.6 The Home Team must provide an Umpire in the event of the non-attendance of an umpire.
- 2.7 The Home manager is to provide the umpire with appropriate match balls.
- 2.8 The manager is the only team person, during the game, to approach the umpire to seek a ruling or a decision.
- 2.9 In the event of a protest during a match, to ensure that the scorebook is "ruled" as per baseball scorers' recommendations to reflect the position of all players and game situation. On issuing the initial response to protest to the umpire, allowing the umpire an opportunity to consider the objection and then deciding whether to continue the protest.
- 2.10 At the conclusion of a match, involving a protest, inform the Umpire in Chief, whether the protest is to proceed and endorse the Match Report Sheet appropriately.
- 2.11 To ensure that all umpires are remunerated for the match.
- 2.12 On completion of the match ensure that the Match Report Sheet, and if required the BBA Report Form (BBA Form#7) is sighted and signed.
- 2.13 Where required (see Section 13: Match Report for the Media), the winning manager will be responsible for ensuring that the Media Report is filled in and forwarded to the BBA Media representative, either by email or other approved format within 24 hours.

3.0 Scorer's Responsibilities

- 3.1 The home and away teams must both supply a scorer who must sit together, during the entirety of the match, in a designated area that is isolated away from players, officials and spectators.

3.1.1 Scorers are permitted to use electronic scoring system applications, however there must still be at least one physical scorebook completed. It is the responsibility of the home team to score in the physical score book and to complete the match sheet.

3.1.2 Any reference to 'scorebook' in BBA Governing Documents is inclusive of both electronic and physical scorebook options.

3.2 The scorers will transfer the line-ups of both teams onto their respective scorebooks and/or scoring application. The information contained on the "pink" line-up sheet given to them by the managers must be accurately transposed to the score book prior to the commencement of the match. Scorers must ensure that the Surname and First names are recorded in full and are identical to the registered name of the player as far as can be determined.

3.3 To record their own team's line-up onto the Match Report Sheet. This information to be accurately transposed from the "pink" line-up sheet supplied by their manager. The Surname and First name put on the Match Report Sheet should be the player's registered name as far as can be determined.

3.4 To score the match according to the "Official Scoring Rules of Baseball". The scorers shall have the authority to rule on any point not specifically covered in these rules but only by consensus. Both score books must be identical.

3.5 If the teams change sides before three players are out, the scorer shall immediately inform the umpire of the mistake.

3.6 If the game is protested or suspended, the scorer shall make note of the exact situation at the time of the protest or suspension. The information noted is usually done by "ruling" the scorers' books indicating the score, the number of outs, the position of any runners as well as the ball and strike count on the batter.

3.7 The scorer shall not make any decision conflicting with the Official Playing Rules or with the umpire's decision.

3.8 The scorer shall not call the attention of the umpires, or any member of either team, to the fact that a player is batting out of turn.

3.9 At the completion of a match the scorers must:

3.9.1 Note the pitchers on the Match Report Sheet;

3.9.2 Must record the pitch count of any pitcher who has not attained the age of 18 years on the Match Report Sheet;

3.9.3 Must complete a statistics sheet for the BBA Awards and forward to the BBA Competition Coordinator with 7 days.

3.10 The scorer, in conjunction with their manager, is to complete an injury form for any injury incurred by one of their players in the course of the match and forward it to the BBA Secretary.

4.0 Starting Matches

4.1 Games shall commence at times stated in fixtures, and these Governing Documents, unless other arrangements have been made via the mutual agreement of both clubs, and with the approval of the BBA Committee.

4.2 No games shall commence unless there are two scorers present.

4.3 The ground manager of the home club can declare the ground unsuitable for play, up to 15 minutes prior to game time. The ground manager should do this if:

4.3.1 There are pools of water on the playing surface, and it is raining.

4.3.2 The surface is too slippery to be safe.

4.3.3 The batting boxes, and / or the base paths are unsafe.

4.3.4 The ground does not pass a ground assessment.

4.4 Unless the home club shall have given previous notice that the game has been postponed, or will be delayed in starting, the umpire, or umpires, and the managers of both teams shall enter the playing field fifteen minutes before the time set for the game to begin and proceed directly to home base. They will then decide whether the game is to be abandoned due to adverse weather.

4.5 Unfit Playing Conditions

4.5.1 For any game, up to 15 minutes grace can be allowed to correct ground markings to a reasonable standard before the game needs to be forfeited.

4.5.2 Umpires shall give at least 10 minutes notice before the scheduled starting time, for any ground items requiring attention.

4.5.3 If, and when, a diamond is declared unfit to play by the umpire, the home team will be allowed time to rectify any issues subject to them being completed no later than 40 minutes past the scheduled game start time.

4.5.4 This time limit allows enough time for a legal game to be completed following pre-match warmups and plate meeting.

4.5.5 Where a game is abandoned due to unfit playing conditions which have arisen for reasons other than something outside their control, then the game shall be forfeited by the home team. A win will be awarded to the away team and the game score shall be 0-9 to the team in default and 3-0 to its opponent.

4.6 To "call" a game due to the fitness of the playing conditions, the umpire must be in attendance at the ground at the scheduled time of commencement. This ruling does not prevent the association abandoning a round due to weather etc.

4.7 No Game

4.7.1 Matches which are washed out (abandoned), will be declared a 'No Game' with no scores recorded and no match points awarded.

4.7.2 Matches which are abandoned prior to being declared a legal game due to unfit playing conditions as a result of weather-related impacts will be declared a 'No Game' with no scores recorded and no match points awarded.

4.8 If the umpire/umpires and the managers of both teams declare the ground suitable, then control of the game goes to the umpire.

4.9 No game should commence if it is raining.

4.10 Once a game is started, the umpire has sole control of decisions regarding the weather, but shall be guided as follows:

4.10.1 If the rain increases acutely, and affects visibility, the game should be halted.

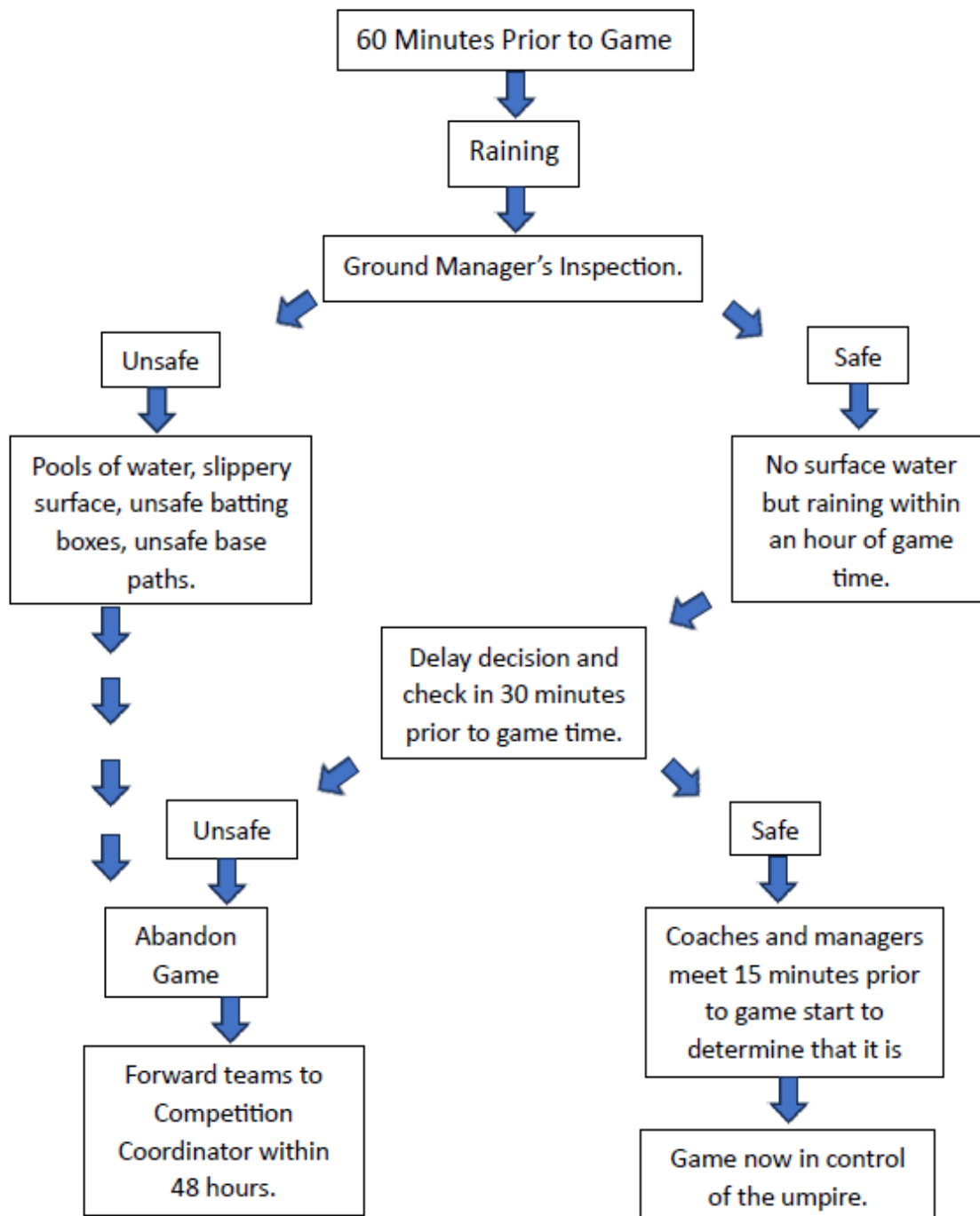
4.10.2 If the rain continues and becomes hard enough to cause pools of water on the ground, the game should be halted.

4.11 Any attempt made to clear water from the ground while it is still raining should only be made after consideration of the current and forecast weather conditions.

4.12 If the rain stops, the home team is to be instructed to remove all the water from the playing surface.

4.13 If this can be accomplished within a timeframe which allows for a legal game to be completed, the game can resume. If a legal game is not possible then the game will be abandoned.

RAIN DELAY FLOWCHART



Safe = No rain, no pools of water, no slippery surface or unsafe base paths and batting boxes. Raining but no pools of water, slippery surface or unsafe base paths or batting boxes.

Unsafe = Pools of water, slippery surface, unsafe base paths or batting boxes and it is still raining. Rain has stopped but ground cannot be made playable within 15 minutes of playing time.

5.0 Pre-Match Diamond Warmup

5.1 Fifteen minutes (15) prior to the scheduled start time, the visiting team may use the diamond for a maximum of 5 minutes.

5.2 Ten (10) minutes prior to the scheduled start time, the home team may use the diamond for a maximum of five (5) minutes.

6. Pre-Match Start: Plate Meeting

6.1 Five (5) minutes prior to the scheduled start time, the diamond is to be vacated. Managers from both teams are to meet with the umpires at the home plate to determine ground rules etc.

6.2 The home manager shall give their batting order to the umpire-in-chief, in duplicate.

6.3 Next the visiting manager shall give his batting order to the umpire-in-chief, in duplicate.

6.4 The umpire-in-chief shall make certain that the original and copies of the respective batting orders are identical, and then tender a copy of each batting order to the opposing manager. The copy retained by the umpire shall be the official batting order. The tender of the batting order by the umpire shall establish the batting orders. Thereafter, no substitutions shall be made by either manager, except as provided by the Official Rules of Baseball, and the BBA Governing Documents.

6.5 A copy of the batting orders are given to each scorer, by the managers.

6.6 As soon as the home team's batting order is handed to the umpire-in-chief, the umpires are in charge of the playing field, and from that moment they shall have sole authority to determine when a game shall be called, suspended or resumed on account of weather or the condition of the playing field.

7.0 Designated Hitter Rule

7.1 A hitter may be designated to bat for the starting pitcher and all subsequent pitchers in any game, without otherwise affecting the status of the pitcher/s in the game. A Designated Hitter for the pitcher must be selected prior to the game and must be included on the line up cards presented to the Umpire-in-Chief.

7.2 It is not mandatory that a club designate a hitter for the pitcher, but failure to do so prior to the game, precludes the use of the Designated Hitter for that game.

7.3 Pinch hitters for the Designated Hitter may be used. Any substitute hitter for a Designated Hitter, becomes the Designated Hitter. A replaced Designated Hitter shall not re-enter the game in any capacity.

7.4 The Designated Hitter may be used defensively, continuing to bat in the same position in the batting order, but the pitcher must then bat in the place of the substituted defensive player, unless more than one substitution is made, and the manager must then designate their spots in the batting order.

7.5 A runner may be substituted for the Designated Hitter, and the runner assumes the role of the Designated Hitter. A Designated Hitter may not pinch run.

7.6 A Designated Hitter is "locked" into the batting order. No multiple substitutions may be made that will alter the batting rotation of the Designated Hitter.

7.7 Once the game pitcher is switched from the mound to a defensive position, this move shall terminate the Designated Hitter role for the rest of the game.

7.8 Once a pinch hitter bats for any player in the batting order, and then re-enters the game to pitch, this move shall terminate the Designated Hitter role for the remainder of the game. (The game pitcher may only pinch hit for the Designated Hitter).

7.9 Once a Designated Hitter assumes a defensive position, this move shall terminate the Designated Hitter role for the remainder of the game. A substitute for the Designated Hitter need not be announced until it is the Designated Hitter's turn to bat.

8.0 Legal Game or Regulation Game

8.1 A regulation game consists of 2 hours (Div 1,2 and 3), or 90 minutes (Women's) unless extended due to finals, or shortened:

8.1.1 because the home team needs none of its half of the inning, or only a fraction of it; or

8.1.2 in the case of a Division 1 game, the time has reached 5.00pm; or

8.1.3 because the umpire calls the game.

8.2 A Legal Game shall be a minimum of 65 minutes for men's competition and 50 minutes for women's competition or a regulation game as per "Official Baseball Rules", Rule 4.10c.: If a game is called, it is a regulation game:

8.2.1 If five innings have been completed; or

8.2.2 If the home team has scored more runs in their four complete innings than the visiting team has scored in 5 complete half innings; or

8.2.3 If the home team scores one or more runs in its half of the 5th to tie the score.

8.3 If each team has the same number of runs when the game ends, the umpire shall declare it a "Tie Game".

8.4 If a game is called before it becomes a regulation game, the umpire shall declare it "No Game."

9.0 Substitute Runner for Catcher/Pitcher

9.1 A Substitute Runner (SR) **must** be used for the catcher when there are 2 outs, i.e. when the game catcher reaches base, a runner shall substitute immediately.

9.2 A Substitute Runner (SR) **may** be used for the catcher when they reach base, if there are less than 2 outs.

9.3 A Substitute Runner (SR) **may** be used for the pitcher when they reach base.

9.4 The SR shall be a bench player, and may be a player substituted from the game, however if there is no bench player, then the last player out **must** be the SR. **Note:** A player included in an extended batting line up is not considered a bench player.

10.0 Five Minute Rule

10.1 The Five-Minute Rule shall apply to all senior matches.

10.2 If the game has more than 5 minutes before the scheduled finish time from the call of "side away" after the third out, and even innings have been played, a further complete innings shall be played.

10.3 If the game has 5 minutes or less remaining to the scheduled finishing time, and completed innings have been played, the game will stop immediately.

10.4 If the game has 5 minutes or less to the scheduled finishing time and if the inning has not been completed with the home team ahead, then the game will stop immediately.

10.5 If the home team is tied or behind, then the game will continue until either the winning run is scored, or until the home side has been retired.

Note: The rule will be applied with a maximum of 10 minutes added to the scheduled finishing time. If the game fails to be completed within the 10 minutes added on to the scheduled finishing time, scores revert back to the last completed innings.

11.0 One Sided Games

11.1 Any Division 1 or 2 game which has a team leading by ten (10) or more runs after 7 completed innings will be concluded at that point, except if the home team is leading by ten runs or more, the bottom half of that innings will not be played. This rule also applies in the 8th inning and in all finals matches.

11.2 Any Division 1 or 2 game which has a team leading by 15 or more runs after 5 completed innings will be concluded at that point, except if the home team is leading by 15 runs or more, the bottom half of that innings will not be played. This rule also applies in the 6th inning and in all finals matches.

11.3 Any Division 3 or Women's game which has a team leading by ten (10) or more runs after 5 completed innings will be concluded at that point, except if the home team is leading by ten runs or more, the bottom half of that innings will not be played. This rule also applies in the 6th inning and all finals matches.

11.4 In order to prevent one sided games and to encourage participation in the lowest senior competition grade, the '7 run rule' will apply in each inning. Teams in this grade may also use an extended batting lineup of up to 12 players.

11.4.1 The 7 run rule applies to regular season and final series games. The half inning is complete once 7 runs are scored (even if subsequent runs score on the same play - automatic double or home run etc) or there are 3 outs, whichever occurs first. Runners left on base do not score.

11.4.2 An extended batting line-up (12 players maximum) may be used in the lowest senior division. All players commencing in the extended line up must be nominated on the line-up sheet handed to the umpire(s) and opposition manager in attendance prior to the commencement of the game. It is not compulsory for both teams to use this rule.

11.4.3 If a team has invoked the extended line up rule, players nominated on the extended line up can change fielding positions at any time during the game. There are no requirements for a player to play in the field at any time during the game.

11.4.4 Bench players who have not participated in the game may take the place of an injured or removed player. If teams do not use the extended line-up, then they are bound by the traditional removal of players and bench players coming into the game.

11.4.5 If a player on the extended batting line up does not take their turn at bat for any reason, then that batter is deemed to have been removed from the game and is then removed from the batting line up. The player can no longer participate in the game, and the line-up is compressed (no blanks) with all subsequent batters batting in order skipping the removed player.

11.4.6 A team can only compress an extended line-up back to nine (9) batters. Any additional players removed from the line-up (compression to seven (7) or eight (8) batters in the line-up) will result in a blank (and automatic out) in place of the removed players.

12.0 Match Report Sheets and BBA Report Card (BBA Form #7)

12.1 It is the responsibility of the Home Club to ensure that a Match Report Sheet and the BBA Report Card (Form #7) are available at senior matches.

12.2 In addition to the information requested on the Match Report Sheet, the following information is also required to be included:

12.2.1 Each pitcher must be noted on the sheet, by the letter "P" followed by a number denoting the order in which they came to the mound;

12.2.2 Any under-age pitchers who have a pitch count restriction, must have the number of pitches recorded against their name, in red;

12.2.3 Any under-age catchers to be noted as "C" in red.

12.3 The Match Report Sheet must be written in ink, not pencil.

12.4 Team managers or their substitute must come to the scorers' location and sign the Match Report Sheet and any Reported Persons Notice upon their completion by the Umpire.

12.5 The Match Report Sheet must not be altered after it is signed by the Umpire/s and managers or their delegates.

12.6 The **home** team must ensure the Match Report Sheet is delivered to the Competition Coordinator, electronically or in person, within 48 hours of the finish of the match.

12.7 Scorers are not to sign the Match Report Sheet.

13.0 Match Report for the Media

Media coverage is vital to the progress of baseball in the Greater Bendigo area. The BBA Committee will endeavour to appoint a Media Representative prior to each season.

13.1 Where a BBA media representative is appointed:

13.1.1 Each club will appoint a Club Media Representative who is responsible for ensuring that winning teams complete a Match Report for submission to the BBA.

13.1.2 The winning team of EVERY senior match is to complete a media report detailing the following:

- The box scores of the match
- Pitchers' statistics for both teams
- Batting statistics for both teams
- A summary of the game
- If possible minimum 3 high resolution photographs of the game in progress

13.2 The Club Media Representative is then responsible for getting the BBA Match Reports to the BBA Media Representative within 24 hours from the completion of the game.

14.0 Reported Persons or Clubs

14.1 Ejected persons must leave the playing field immediately and cannot re-enter the playing field while the umpire is still on the ground.

14.1.1 Rule of Baseball 6.04(d)

(When a manager, player, coach or trainer is ejected from a game, he shall leave the field immediately and take no further part in that game. He shall remain in the Club house or change to

street clothes and either leave the park or take a seat in the grandstand well removed from the vicinity of his team's bench or bullpen.) shall be enforced insofar as they are practicable in the circumstances of that particular game.

14.2 Ejected persons are not to approach the umpire after being ejected.

14.3 Team manager or their substitute must come to the Scorer's area and sign the Match Report Sheet, and any Report Card Form (BBA Form #7) upon their completion by the Umpire.

14.4 Signing of the Card/Notice is compulsory, and thereby endorses that the Manager and his/her club is aware of what is included on the Card/Notice.

14.5 The Card/Notice shall not then be amended or added to except for the description of the offence that will be completed by the Umpire and forwarded to the appropriate BBA Secretary.

14.6 A reported person's manager will **NOT** receive a copy of the Report Card Form (BBA Form #7). No other official notification of a report shall be forwarded to a Club or ejected person unless:

14.6.1 The club or the ejected person may via email or in writing, before a Tribunal hearing, request a copy of the Report Card (BBA Form #7). The appropriate Secretary must comply with this request so that the club and/or ejected person can examine the document at least 24 hours prior to the person or club appearing before the Tribunal.

14.6.2 If a club or any registered person wishes to see any Yellow, Blue or Red Card reports, not entailing a Tribunal appearance, then they must request so in writing or via email to the appropriate BBA Secretary. The request will be put to the BBA Committee if appropriate and if records are to be released.

15.0 Most Valuable Player

15.1 Three, two and one votes (no shared votes) are to be recorded by the Plate Umpire, in consultation with the base umpire(s), by clear endorsement on the Match Report Sheet provided.

15.2 Votes should reflect the contribution made to the game by the players receiving votes.

16.0 Ground Equipment

16.1 All ground equipment is to be provided by the host club.

16.2 Playing area:

16.2.1 The playing area shall be enclosed if possible; but

16.2.2 On all grounds not enclosed a net or distinguishing mark and a line shall be placed a maximum of 60 feet from the home plate; and

16.2.3 When the distance beyond the first or third base line exceeds 90 feet, a white line shall be marked at 60 feet parallel with the respective base line.

16.2.4 Limits and conditions (Ground Rules) are to be established by the Managers with the Umpire, before the game.

16.3 Back Net: a securely erected continuous back net at least 10 metres by 3 metres.

16.4 Bases: to be whitened and fixed.

16.5 Home Plate: to be whitened, fixed and flush to the surface. On constructed baseball fields, the plate shall be permanently fixed. 16.6 Pitching Mound: mounds are compulsory for all senior divisions.

16.7 Pitching mats: to be pegged on mound.

16.8 Foul flags: In the absence of fence markers, flags of cloth at least 450mm square on single poles at least 1.0m high. No discs or metal plates permitted.

16.9 Players' Benches: must be provided for all games. Scorers and/or statisticians are not permitted on the bench.

16.10 Home Run Fence: For all divisions is compulsory. Where there is no permanent Home Run Fence, clubs shall provide a temporary Home Run Fence 98 metres from the home plate to the nearest fence, stand or other obstruction on the right and left field foul lines, 114 metres to centre field unless other distances are approved by the BBA.

16.11 Any home run limits without a fence shall be defined by locating witches hats or flags of cloth, at least 450mm square, on single wooden poles. No discs or metal plates permitted. A white line is to be marked on the ground joining each marker, and is considered the top of the "fence."

16.12 The umpire may ask for two responsible persons at the Home Run "Fence" to assist him to judge decisions. Use of a temporary Home Run Fence is optional.

16.13 Match balls: In all senior games, two new approved leather water-proof baseballs of the same brand are to be provided by the Club nominated as the Home Team. Vinyl baseballs are not permitted in senior games. Match baseballs shall not be available for pre-inning warm-ups, except for use by the pitcher.

17.0 Home Team at Neutral Venue

Teams who are designated as the Home Team at neutral venues will incur a fine if they do not remove all equipment from the ground, and replace it back into storage, clean up the field and benches, smooth base paths and base areas.

18.0 Uniforms and Equipment

18.1 Uniforms shall be as registered. All players shall wear a club cap or helmet.

18.2 All Division 1 players who take the field shall be in **full club uniform**. Players who have been granted match permits must play in either the full uniform of their host club or the full uniform of their parent club.

18.3 Seven players at least in Divisions 2 and 3 shall be in full uniform, and remaining members shall be as near as possible to team uniform.

18.4 Coach's uniforms are not compulsory provided a club jacket or shirt, plus cap are worn.

18.5 **Undershirts** (if worn) must conform with the official uniform registered with the BBA.

18.6 **Jackets:** A pitcher may bat wearing a jacket. A batting pitcher who reaches base may remove or put on their jacket, provided it is readily available with the base coach. No other player may wear a jacket whilst playing.

Exception: If at the discretion of the umpire (due to inclement weather) outfielders may wear a jacket.

18.7 **Helmets:** The wearing of double eared helmets, whilst batting, and base running and for base coaches under 18 and batboys is compulsory. Base coaches 18 and over must wear helmet protection of at least a skull cap. Catchers shall wear helmet and mask protection. Should a player approach the batting box with an unsafe or one eared batting helmet, the umpire is to direct the player to change it immediately.

Exception: A player may wear a one eared helmet if a medical condition requires that he do so, however the batters leading ear must be covered

18.8 **Warm-up catchers:** must wear a mask (with a throat guard if a junior).

18.9 **Jewellery:**

18.9.1 Exposed jewellery such as wrist watches, bracelets and types of earrings, neck chains or any other items judged dangerous by the umpire, must not be worn during the game.

18.9.2 Medical alert bracelets or necklaces are not considered jewellery, but if worn, must be taped to the body.

18.9.3 Players must be asked to remove jewellery and in failing to do so, will be ejected from the game.

18.10 **Gloves:** No circle marking shall be different in colour to the glove.

18.11 **Sweatbands** of minimal size for wearing at the wrist to be in club colours, but white not permitted.

18.12 **Bats:** Wood or composite bats only may be used in all senior matches.

19.0 Offensive Visits to the Pitcher by Pitching Coach or Manager

19.1 A second visit to the same pitcher in any one inning means the automatic removal of that pitcher from the mound but may play in another position.

19.2 The Manager/Coach is permitted three free visits to the mound in any Division 1 game. On the fourth visit the pitcher **MUST** be removed from the mound but may play in another position. No

limit on the total visits in all other Senior/Youth grades. A Manager/Coach may at any time without penalty go on to the ground for the purpose of giving aid to a sick or injured player. A visit occurs as soon as the manager crosses the foul line, and ends as soon as he/she exits the mound. If he/she then revisits the pitcher, this is a second visit.

19.3 The Playing Coach must be nominated on the team sheet. Only a playing coach stationed in the infield can request time out to visit the mound. This visit is deemed one visit to the mound under this rule.

20.0 Time Wasting

20.1 It is contrary to the spirit of senior baseball for teams to engage in the practice of time wasting, particularly in the closing minutes of a time limit game.

20.2 Umpires are hereby instructed to take all necessary steps to prevent such malpractice and team managers are warned that the BBA will not tolerate such tactics.

21.0 Intentional Walks

21.1 In all senior divisions, a batter can be awarded first base at any time during the batters turn at bat, following a signal by the fielding team manager (and only by the manager), directly to and acknowledged by the plate umpire. The plate umpire shall signal the intentional walk by holding up four (4) fingers. The plate umpire will also inform the scorers of the intentional walk and 'IBB' will be indicated in the score book for the batter.

21.2 For an intentional walk, no pitches are included in the pitcher's pitch count unless they were thrown to the batter before the intentional walk is called.

22.0 Playing Field Dimensions

Senior and Under 18		Women	
Pitching Distance	60' 6" (18.44m)	Pitching Distance	60' 6" (18.44m)
Base Paths	90' (27.43m)	Base Paths	90' (27.43m)
Diagonal	127' 3 3/8" (38.79m)	Diagonal	127' 3 3/8" (38.79m)
Pass Ball Line	60' (18.29m)	Pass Ball Line	60' (18.29m)
Bases	Full Size	Bases	Full Size
Home Plate	Full Size	Home Plate	Full Size
Pitching Plate	Full Size	Pitching Plate	Full Size
Coach's Box	20' x 10'	Coach's Box	20' x 10'
Batting Box	6' x 4' (1.83m x 1.22m)	Batting Box	6' x 4' (1.83m x 1.22m)