

Direction Control Valve, Spool Type / Single Solenoid



Doc No.: f2.0/F4WE-/R0-2

Model F4WE6
Size NG6/ CETOP 3
Max Flow 60lpm
Max Pressure 315Kgf/cm²

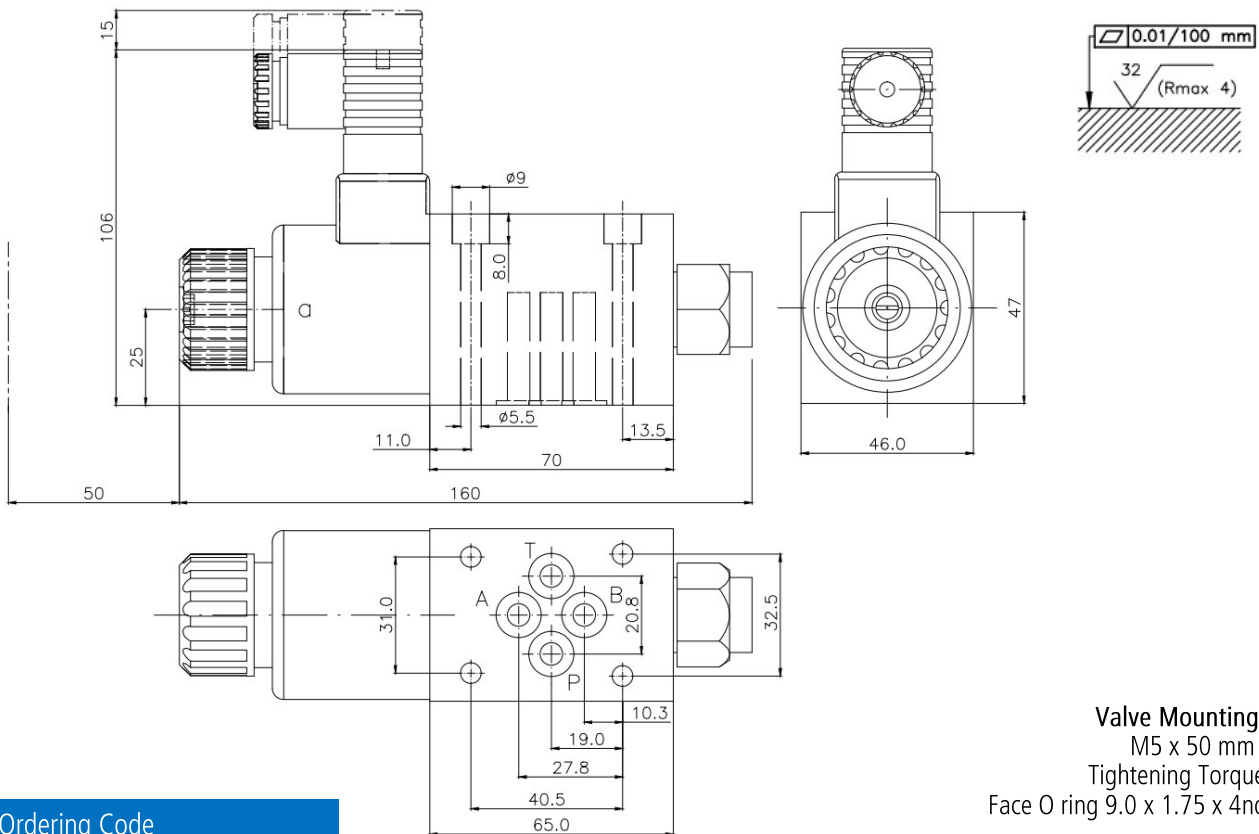


Description & Data

Direction control valves F4WE6 are used in hydraulics to change oil flow direction using electric solenoids. The valves use wet-pin AC or DC replaceable coils and are rated up to pressures of 315kgf/cm². A variety of spool configurations and coil voltages are available to meet the demands of various applications. The valves meet the requirement of CETOP 3 mounting interface (ISO4401) and are designed for use in vertical stacking assemblies.

Size	NG6	
Max. Flow	LPM	60
Max. Pressure	Kgf/cm ²	315
Max Pr. in Port T	Kgf/cm ²	160
Manual Override	Standard	
Oil Grade	Mineral Oil	ISO VG 32 - 100
Oil Cleanliness	ISO 4406	19 / 17 / 14
Operating Temp.	° C	+ 20 to 80
Weight	Kg	1.6

Dimension Data



Ordering Code

F4WE 6 D - G24 1x 1x = Series Code

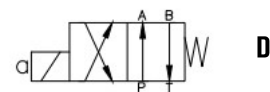
G24= Solenoid Voltage 24VDC
 A220= Solenoid Voltage 220VAC

6 = Size NG6/ CETOP 3

- = Omit for Spring Centred

Refer Spool Configurations for details...

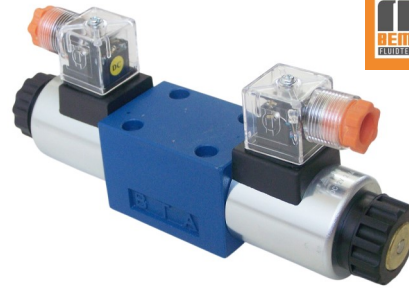
F4WE = FLUIDIK 4-port Direction Control Valve



Direction Control Valve, Spool Type

Model F4WE6

Size NG6/ CETOP 3
 Max Flow 60lpm
 Max Pressure 315Kgf/cm²



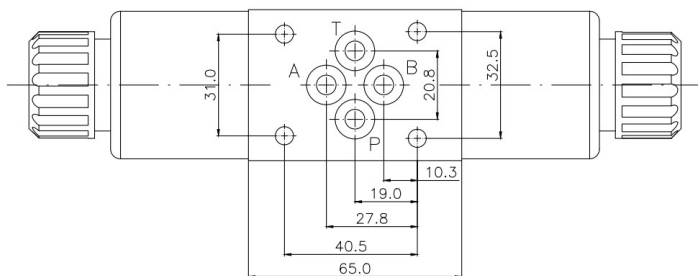
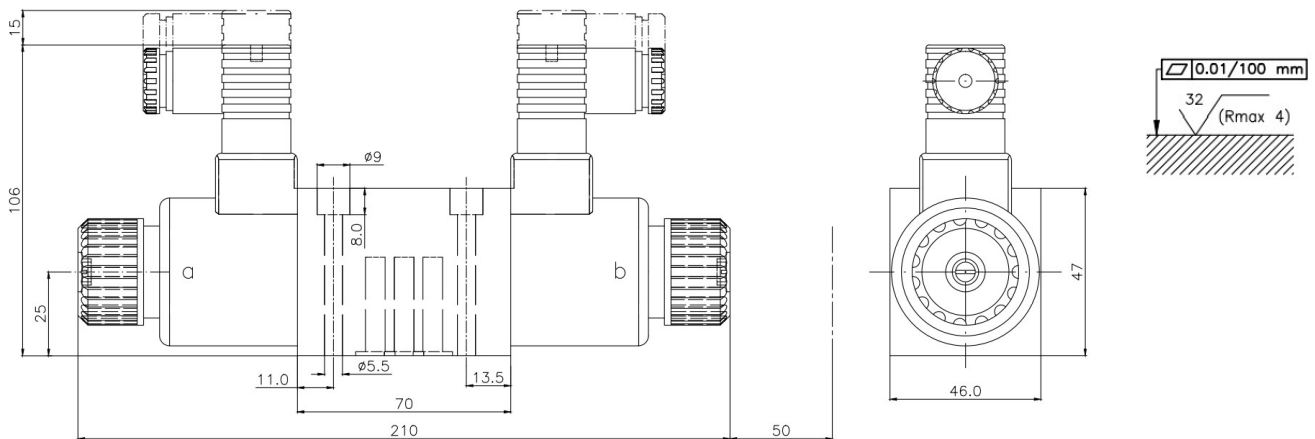
Doc No.: f2.0/F4WE/R0

Description & Data

Direction control valves F4WE6 are used in hydraulics to change oil flow direction using electric solenoids. The valves use wet-pin AC or DC replaceable coils and are rated up to pressures of 315kgf/cm². A variety of spool configurations and coil voltages are available to meet the demands of various applications. The valves meet the requirement of CETOP 3 mounting interface (ISO4401) and are designed for use in vertical stacking assemblies.

Size	NG6	
Max. Flow	LPM	60
Max. Pressure	Kgf/cm2	315
Max Pr. in Port T	Kgf/cm2	160
Manual Override	Standard	
Oil Grade	Mineral Oil	ISO VG 32 - 100
Oil Cleanliness	ISO 4406	19 / 17 / 14
Operating Temp.	° C	+ 20 to 80
Weight	Kg	2.0

Dimension Data



Valve Mounting Bolts:
 M5 x 50 mm x 4nos
 Tightening Torque 9 Nm
 Face O ring 9.0 x 1.75 x 4nos/NBR

Ordering Code

F4WE 6 G - G24 1x 1x = Series Code

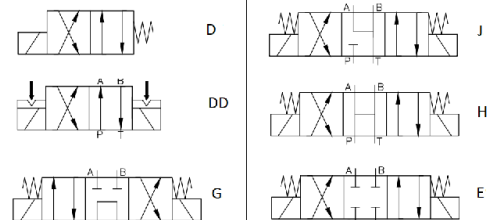
6 = Size NG6/ CETOP 3

G24= Solenoid Voltage 24VDC
 A220= Solenoid Voltage 220VAC

- = Omit for Spring Centred
 D = Detent (Only available with D spool)

Refer Spool Configurations for details...

F4WE = FLUIDIK 4-port Direction Control Valve



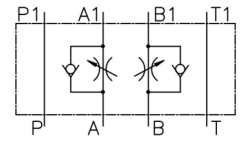
Double Throttle Check Valve, Sandwich



Doc No.: f2.0/FZ2FS6/R0

Model FZ2FS6

Size NG6/ CETOP 3
 Max Flow 60lpm
 Max Pressure 315Kgf/cm²

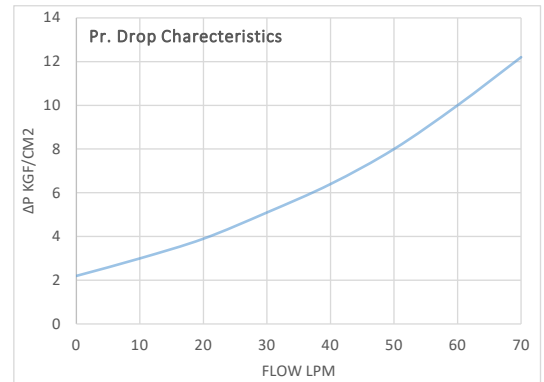
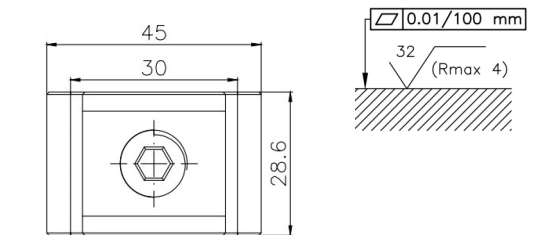
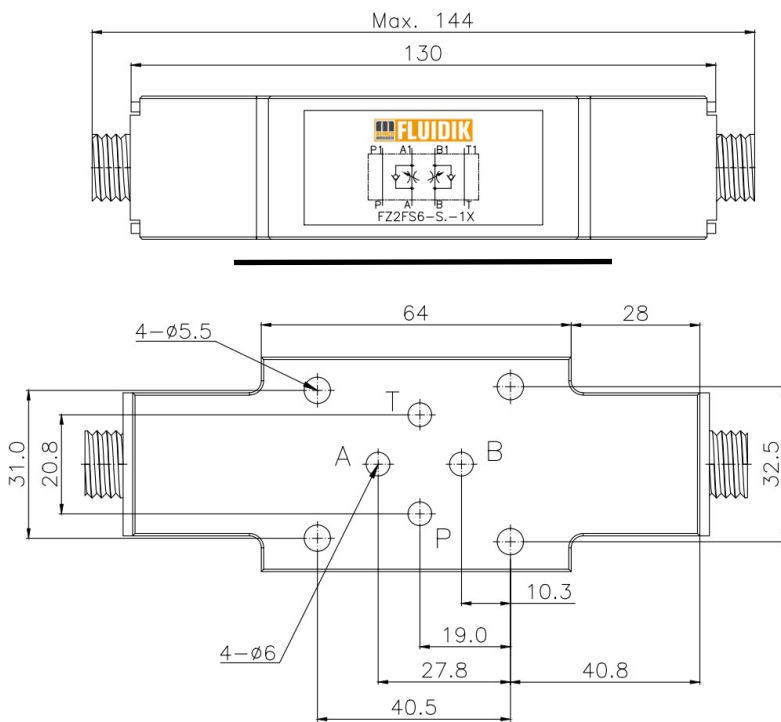


Description & Data

Sandwich throttle check valves are used in hydraulic circuits for limiting oil flow in A & B ports. The valves use adjustable throttle spools to control the oil flow in one direction and permit free flow in other direction. FZ2FS6 valves are available with meter-in (on request only) or meter-out circuits. The valves meet the requirement of CETOP 3 mounting interface (ISO4401) and are designed for use in vertical stacking assemblies.

Size	NG6	
Max. Flow	lpm	60
Max. Pressure	Kgf/cm2	315
Oil Grade	Mineral Oil	ISO VG 32 - 100
Oil Cleanliness	ISO 4406	19 / 17 / 14
Operating Temp.	° C	+ 20 to 80
Weight	Kg	0.9

Dimension Data



Ordering Code

Face O ring 9.0 x 1.75 x 4nos/NBR

FZ2FS 6 S - 1x

1x = Series Code

S = Meter-in/out (depends on the position of O-ring plate*)
 * supplied as standard with valve

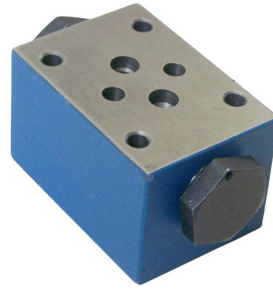
6 = Size NG6/ CETOP 3

FZ2S = FLUIDIK Sandwich Throttle Check Valve

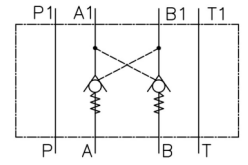
Pilot Operated Check Valve, Sandwich

Model FZ2S6

Size NG6/ CETOP 3
 Max Flow 60lpm
 Max Pressure 315Kgf/cm²



Doc No.: f2.0/FZ2S6/R0

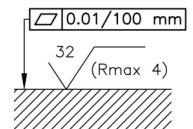
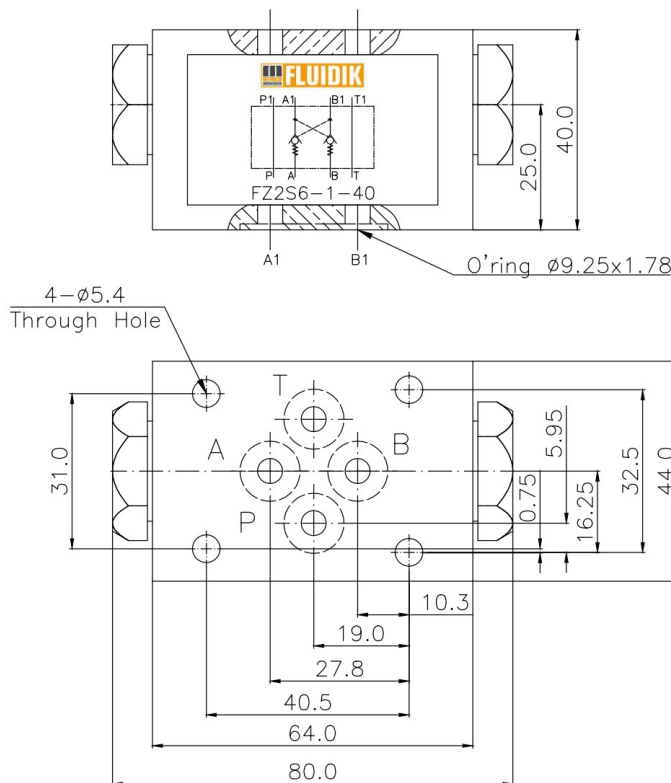


Description & Data

Sandwich pilot operated check valves are used in hydraulic circuits for leak free closure of A & B ports for long periods of time. The valves are designed as pilot-to-open using the pressure signal from internally connected opposite actuator port. The valves meet the requirement of CETOP 3 mounting interface (ISO4401) and are designed for use in vertical stacking assemblies.

Size	NG6	
Max. Flow	lpm	60
Max. Pressure	Kgf/cm2	315
Cracking Pressure	Kgf/cm2	1.5
Area Ratio		A1 : A2 = 1: 3
Oil Grade	Mineral Oil	ISO VG 32 - 100
Oil Cleanliness	ISO 4406	19 / 17 / 14
Operating Temp.	° C	+ 20 to 80
Weight	Kg	0.8

Dimension Data



Ordering Code

FZ2S 6 AB - 1x

1x = Series Code

No Code = Cracking Pressure 1.5bar

AB = Leak Free Ports A & B

6 = Size NG6/ CETOP 3

FZ2S = FLUIDIK Sandwich Double Pilot Check Valve

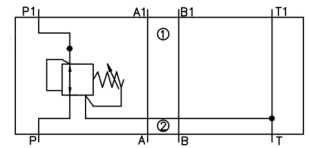
Pressure Reducing Valve, Sandwich

Model FZDR6

Size NG6/ CETOP 3
 Max Flow 30lpm
 Max Pressure 210Kgf/cm²



Doc No.: f2.0/FZZDR6/R0

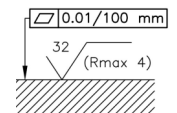
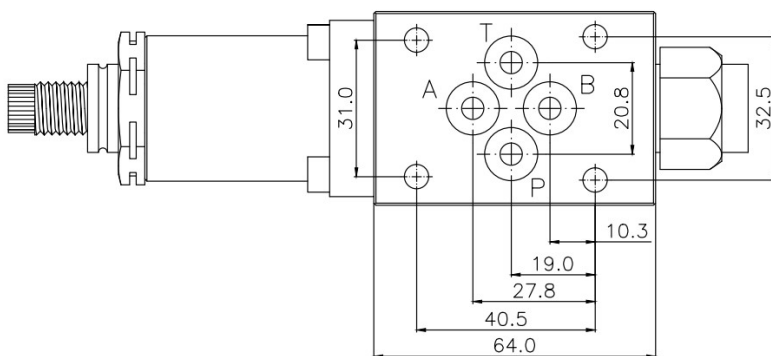
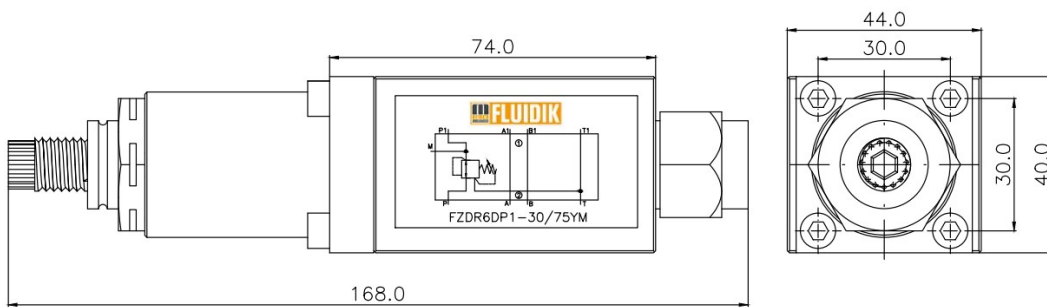


Description & Data

Sandwich pressure reducing valves are commonly used in hydraulics to reduce pressures in one segment of the circuit. The FZDR valves are 3-way direct operated valves in sandwich design with pressure relief function on the secondary side. The secondary pressure can be measured using a gauge port provided. The valves meet the requirement of CETOP 3 mounting interface (ISO4401) and are designed for use in vertical stacking assemblies.

Size	NG6	
Max. Flow	lpm	30
Secondary Pressure	Kgf/cm ²	210
Inlet Pressure	Kgf/cm ²	315
Back Pressure	Kgf/cm ²	Up to 60
Oil Grade	Mineral Oil	ISO VG 32 - 100
Oil Cleanliness	ISO 4406	19 / 17 / 14
Operating Temp.	° C	+ 20 to 80
Weight	Kg	1.2

Dimension Data



Ordering Code

Face O ring 9.0 x 1.75 x 4nos/NBR

FZDR 6 DP1 150 YM 1x 1x = Series Code

Y = internal pilot & external drain
 M = without check valve

DP1 = P-line

6 = Size NG6/ CETOP 3

75 = secondary Pressure up to 75bar
 150 = secondary Pressure up to 150bar
 210 = secondary Pressure up to 210bar

FZDR = FLUIDIK Sandwich Pressure Reducing Valve