

CHECK VALVE - CVK



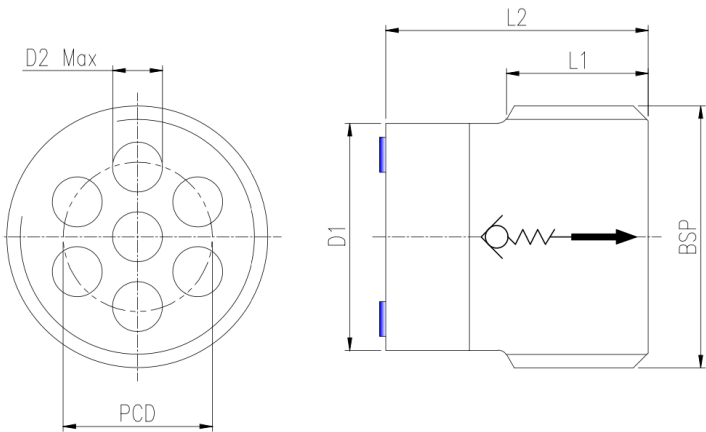
Ball Type | Direct Acting | Screw-in

Specification/ Technical Data

Max. Operating Pressure	700 bar
Maximum Flow	250 lpm
Max. Internal Leakage	0.3ml/min
Flow Direction	A to B
Cracking Pressure	1.5 bar
Custom Cracking Pressure	Upon Request
Material	Carbon Steel
Media	Mineral Oil
Oil Temperature Range	+10 to 80°C
Oil Viscosity	ISO VG 46-100
Oil Cleanliness (ISO 4406)	20/18 /15
Orientation	Any
Weight	0.05 - 0.15Kg



CVK valves are screw-in cartridge-type, direct-acting, ball-type spring-loaded non-return/ check valves. These valves are used for blocking or isolating a specific oil path or load holding in one direction. The valves allow oil flow in A-B direction (above the cracking pressure), but block oil flow in the reverse direction. Consult the factory for custom cracking pressures, stainless steel valves, or any other custom configurations.

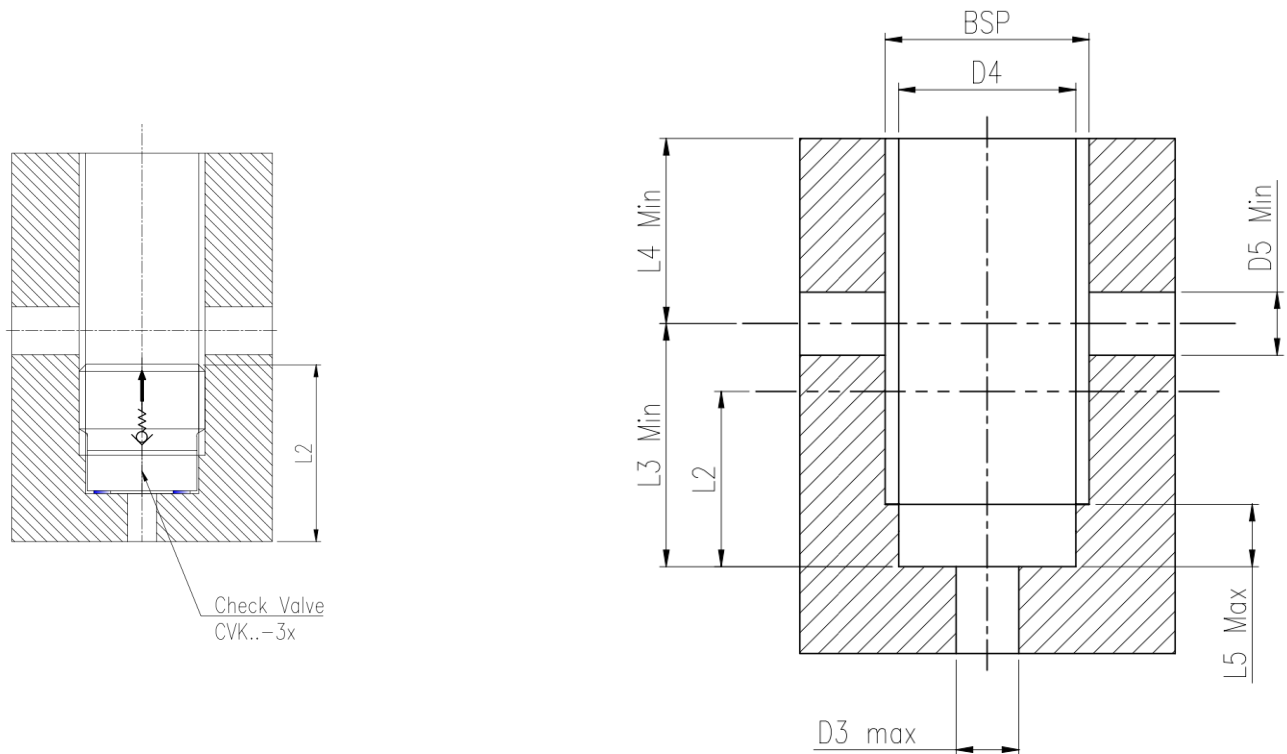


Note: Assembly Tool is available on request or refer page-3 for details  
Consult factory for stainless steel MOC

Ordering Information

Basic Code		CVK
Size/ NG	1/8" to 1" BSP	1... 5
Cracking Pr.	1.5 bar	No code
Seal Material	Viton	No code
Version		3x

Size	Flow LPM	Max Pr. Bar	Wt. Kg	Torque N-m
CVK 0	12	700	0.05	3
CVK 1	22	700	0.05	7
CVK 2	30	600	0.05	15
CVK 3	65	550	0.07	30
CVK 4	180	420	0.10	60
CVK 5	250	350	0.15	120



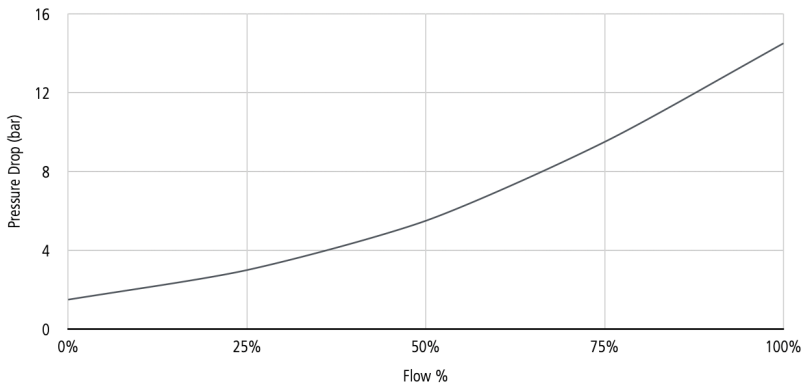
Size	BSP	øD1	øD2	øD3	øD4	øD5	PCD	L1	L2	L3	L4	L5
CVK0-3x	1/8"	8.5	2.0	3.0	8.8	5.0	6.0	6.5	10.0	14.0	15.0	4.0
CVK1-3x	1/4"	11.4	2.5	3.0	11.8	5.0	7.5	7.5	13.5	18.0	20.0	4.0
CVK2-3x	3/8"	14.75	3.0	5.0	15.25	7.0	9.5	10.0	18.0	23.0	20.0	6.0
CVK3-3x	1/2"	18.2	3.5	7.0	19.0	10.0	12.0	12.0	22.0	30.0	25.0	8.0
CVK4-3x	3/4"	23.7	5.5	12.0	24.5	14.0	16.0	16.0	30.0	40.0	30.0	12.0
CVK5-3x	1"	29.7	7.0	16.0	30.75	18.0	21.5	20.0	40.0	52.0	35.0	16.0

Spare List

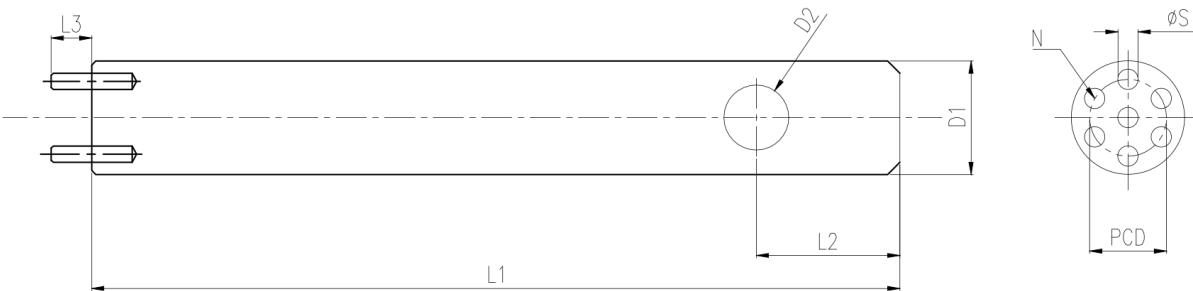
Rect. Ring CVK 0	ø5xø7.2x1.2mm thk
Rect. Ring CVK 1	ø6xø9.5x2mm thk
Rect. Ring CVK 2	ø8.5xø12.5x2mm thk
Rect. Ring CVK 3	ø11xø15x2mm thk
Rect. Ring CVK 4	ø17xø21x2mm thk
Rect. Ring CVK 5	ø21xø26x2.5mm thk

Performance Chart

Recorded at TOil = 40°C and 68 cSt.



Assembly Tool



Size	BSP	$\varnothing D1$	$\varnothing D2$	L1	L2	L3	PCD	N	$\varnothing S$
CVK0-3x	1/8"	8.0	4	60	10	5	6.0	7	1.5
CVK1-3x	1/4"	10.5	5	80	14	4	7.5	7	2.0
CVK2-3x	3/8"	14.5	7	90	18	7	9.5	7	2.5
CVK3-3x	1/2"	18	9	110	22	7	12.0	7	3.0
CVK4-3x	3/4"	24	12	140	30	9	16.0	7	5.0
CVK5-3x	1"	30	15	174	38	14	21.5	7	6.5

Ordering Information

Assembly Tool CVK0	ATCVK03x
Assembly Tool CVK1	ATCVK13x
Assembly Tool CVK2	ATCVK23x
Assembly Tool CVK3	ATCVK33x
Assembly Tool CVK4	ATCVK43x
Assembly Tool CVK5	ATCVK53x

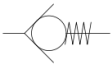
CHECK VALVE - CVMSR



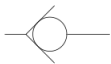
Cartridge Type | 420bar | 400lpm

Specification/ Technical Data

Max. Operating Pressure	400 bar
Maximum Flow	400 lpm
Max. Internal Leakage	0.3ml/min
Flow Direction	A to B
Cracking Pressure	0 or 1.5bar
Custom Cracking Pressure	Upon Request
Material	Carbon Steel
Media	Mineral Oil
Oil Temperature Range	+10 to 80°C
Oil Viscosity	ISO VG 46-100
Oil Cleanliness (ISO 4406)	20/18 /15
Orientation	Any
Weight (approx.)	0.4 - 1.0Kg

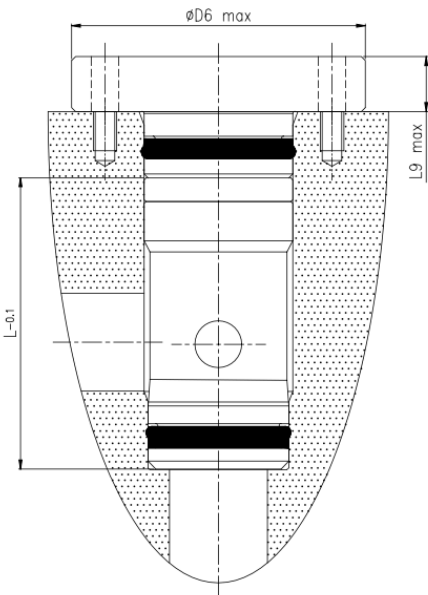


With Spring



Without Spring

Check valves or non-return valves are designed to allow oil flow through them in only one direction and block in opposite direction. The unique flange locking design facilitates superior performance and zero leak. The valve may also be used without flange for replacement purposes. These valves are ideal for high flow applications and are available without spring (0 bar cracking) or standard 1.5bar cracking pressures.



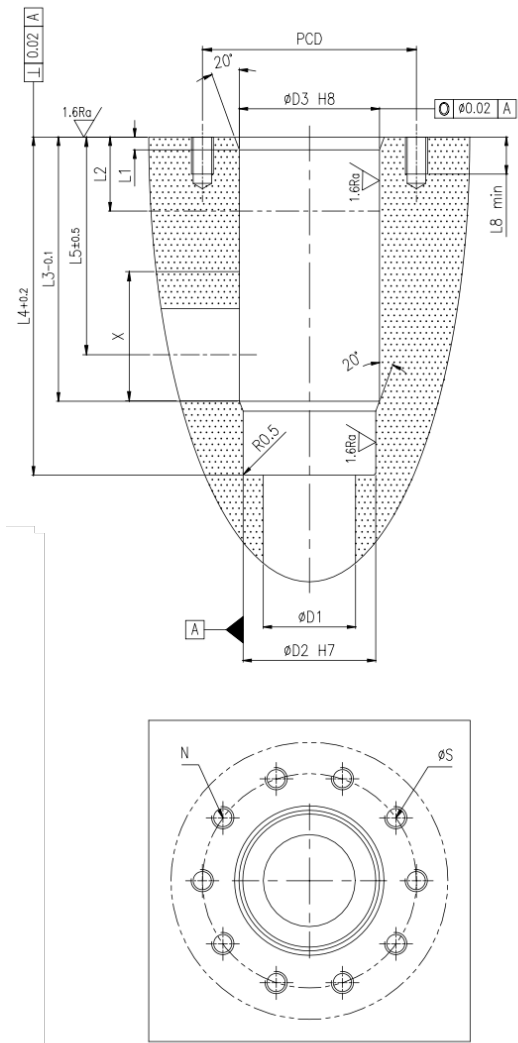
Note: CVMSR is supplied with mounting flange as standard, but cartridge (without flange) may be used as 1:1 replacement for spare requirements.

Ordering Information

Basic Code		CVMSR
Size/ NG	20,25,30	20...30
Cracking Pr.	0/ 1.5bar	0/1.5
Seal Material	Viton	No code
Version	Flange Type	2x

Model	Size	Max Flow	Max Pr.	Torque N-m	Weight Kg
CVMSR 20	NG 20	200 lpm	420 bar	10	0.40
CVMSR 25	NG 25	300 lpm	420 bar	10	0.65
CVMSR 30	NG 30	400 lpm	420 bar	20	1.00

Model	CVMSR 20	CVMSR 25	CVMSR 30
øD1	20	25	30
øD2	28	36	42
øD3	30	38	44
øD4	G1"	G1-1/4"	G1-1/2"
øD5	41	51	56
øD6	65	75	85
L1	3	3.5	3.5
L2	16	16	16
L3	56.5	72.5	79.5
L4	72	91	100
L5	44	57.5	62
L6	16	16	16
L7	20	20	20
L8	10	10	13
L9	14	14	14
L	55.3	74.3	83.3
X	40	40	45
øS	M6	M6	M8
N	6	10	8
PCD	50	58	66



Supplied without mounting bolts

All dimensions in mm

Spare List

CVMSR20...	SSVMSR202X
CVMSR25...	SSVMSR252X
CVMSR30...	SSVMSR302X

Performance Chart

Recorded at TOil = 40°C and 68 cSt.

