

CHECK VALVE - CVK



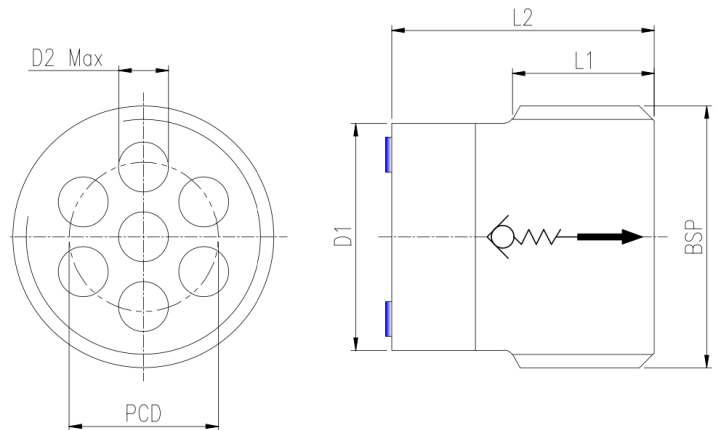
Ball Type | Direct Acting | Screw-in

Specification/ Technical Data

Max. Operating Pressure	700 bar
Maximum Flow	250 lpm
Max. Internal Leakage	0.3ml/min
Flow Direction	A to B
Cracking Pressure	1.5 bar
Custom Cracking Pressure	Upon Request
Material	Carbon Steel
Media	Mineral Oil
Oil Temperature Range	+10 to 80°C
Oil Viscosity	ISO VG 46-100
Oil Cleanliness (ISO 4406)	20/18 /15
Orientation	Any
Weight	0.05 - 0.15Kg



CVK valves are screw-in cartridge-type, direct-acting, ball-type spring-loaded non-return/ check valves. These valves are used for blocking or isolating a specific oil path or load holding in one direction. The valves allow oil flow in A-B direction (above the cracking pressure), but block oil flow in the reverse direction. Consult the factory for custom cracking pressures, stainless steel valves, or any other custom configurations.

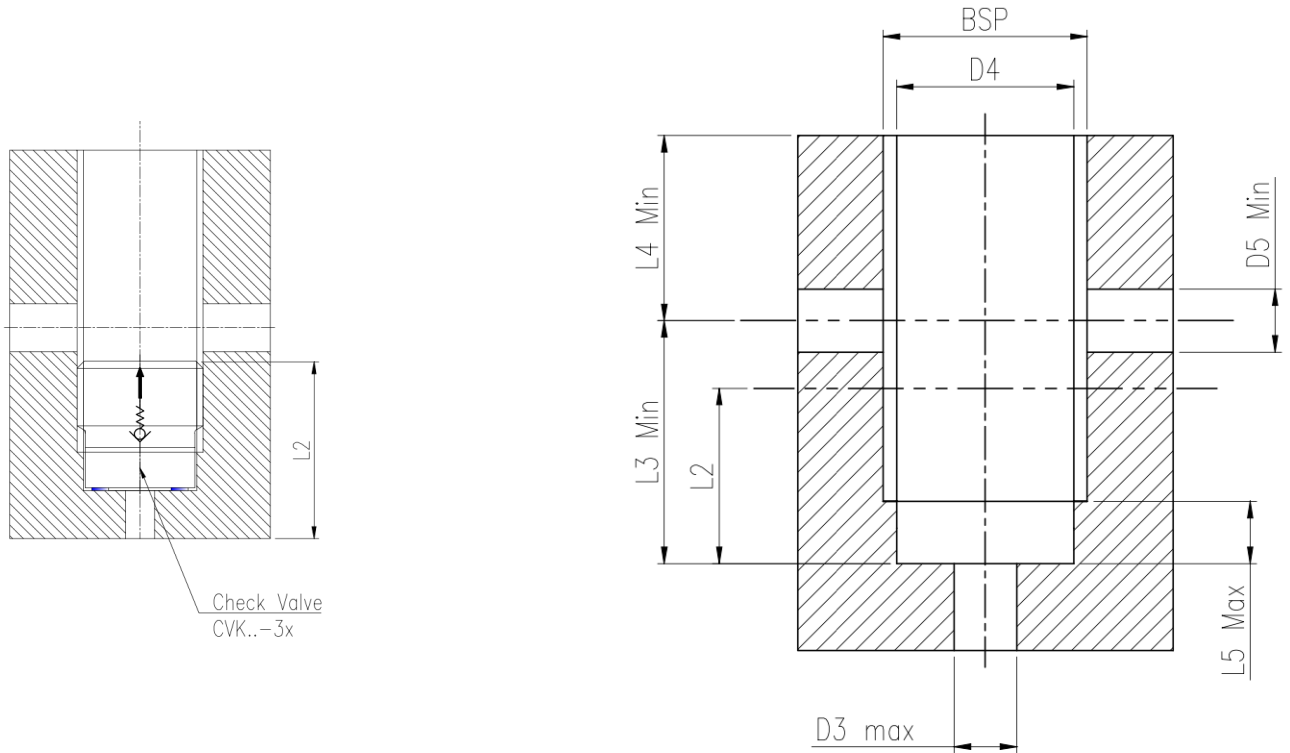


Note: Assembly Tool is available on request or refer page-3 for details
Consult factory for stainless steel MOC

Ordering Information

Basic Code		CVK
Size/ NG	1/8" to 1" BSP	1... 5
Cracking Pr.	1.5 bar	No code
Seal Material	Viton	No code
Version		3x

Size	Flow LPM	Max Pr. Bar	Wt. Kg	Torque N-m
CVK 0	12	700	0.05	3
CVK 1	22	700	0.05	7
CVK 2	30	600	0.05	15
CVK 3	65	550	0.07	30
CVK 4	180	420	0.10	60
CVK 5	250	350	0.15	120



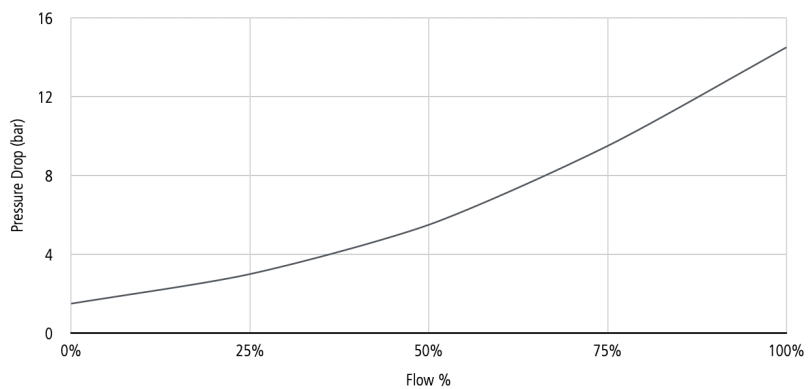
Size	BSP	øD1	øD2	øD3	øD4	øD5	PCD	L1	L2	L3	L4	L5
CVK0-3x	1/8"	8.5	2.0	3.0	8.8	5.0	6.0	6.5	10.0	14.0	15.0	4.0
CVK1-3x	1/4"	11.4	2.5	3.0	11.8	5.0	7.5	7.5	13.5	18.0	20.0	4.0
CVK2-3x	3/8"	14.75	3.0	5.0	15.25	7.0	9.5	10.0	18.0	23.0	20.0	6.0
CVK3-3x	1/2"	18.2	3.5	7.0	19.0	10.0	12.0	12.0	22.0	30.0	25.0	8.0
CVK4-3x	3/4"	23.7	5.5	12.0	24.5	14.0	16.0	16.0	30.0	40.0	30.0	12.0
CVK5-3x	1"	29.7	7.0	16.0	30.75	18.0	21.5	20.0	40.0	52.0	35.0	16.0

Spare List

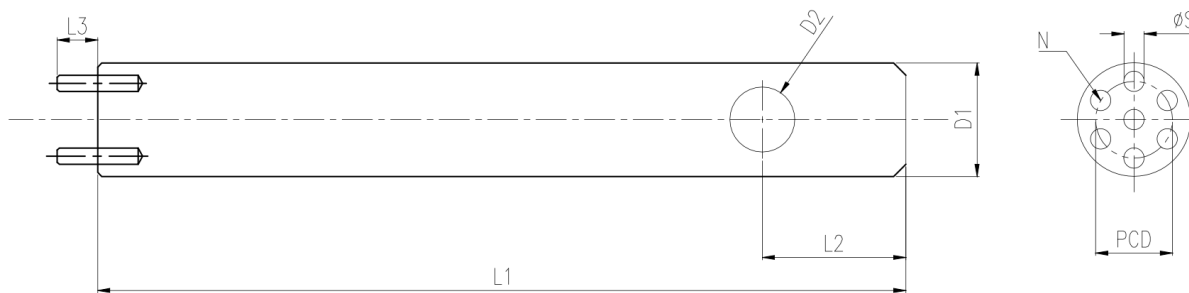
Rect. Ring CVK 0	ø5xø7.2x1.2mm thk
Rect. Ring CVK 1	ø6xø9.5x2mm thk
Rect. Ring CVK 2	ø8.5xø12.5x2mm thk
Rect. Ring CVK 3	ø11xø15x2mm thk
Rect. Ring CVK 4	ø17xø21x2mm thk
Rect. Ring CVK 5	ø21xø26x2.5mm thk

Performance Chart

Recorded at TOil = 40°C and 68 cSt.



Assembly Tool



Size	BSP	øD1	øD2	L1	L2	L3	PCD	N	øS
CVK0-3x	1/8"	8.0	4	60	10	5	6.0	7	1.5
CVK1-3x	1/4"	10.5	5	80	14	4	7.5	7	2.0
CVK2-3x	3/8"	14.5	7	90	18	7	9.5	7	2.5
CVK3-3x	1/2"	18	9	110	22	7	12.0	7	3.0
CVK4-3x	3/4"	24	12	140	30	9	16.0	7	5.0
CVK5-3x	1"	30	15	174	38	14	21.5	7	6.5

Ordering Information

Assembly Tool CVK0	ATCVK03x
Assembly Tool CVK1	ATCVK13x
Assembly Tool CVK2	ATCVK23x
Assembly Tool CVK3	ATCVK33x
Assembly Tool CVK4	ATCVK43x
Assembly Tool CVK5	ATCVK53x