

CHECK VALVE - CVL



Ball Type | Direct Acting | Line Mounted

Specification/ Technical Data

Max. Operating Pressure	315 bar
Maximum Flow	300 LPM
Max. Internal Leakage	0.3ml/min
Flow Direction	A to B
Cracking Pressure	0.5 bar
Sizes (BSP)	3/8" to 1-1/2"
Material	Carbon Steel
Media	Mineral Oil
Oil Temperature Range	+10 to 80°C
Oil Viscosity	ISO VG 46-100
Oil Cleanliness (ISO 4406)	20/18 /15
Orientation	Any
Weight	0.02 - 0.22Kg

Note: Consult factory for stainless steel (SS304) MOC, NPT or UNF threads and custom cracking pressures

Ordering Information

Basic Code		CVL
Size/ NG	3/8" to 1-1/2" BSP	2... 7
Cracking Pr.	0.5 bar	No code
ED Seal	With-E/ Without-W	E/ W
Seal Material	NBR	No code
Version		1x



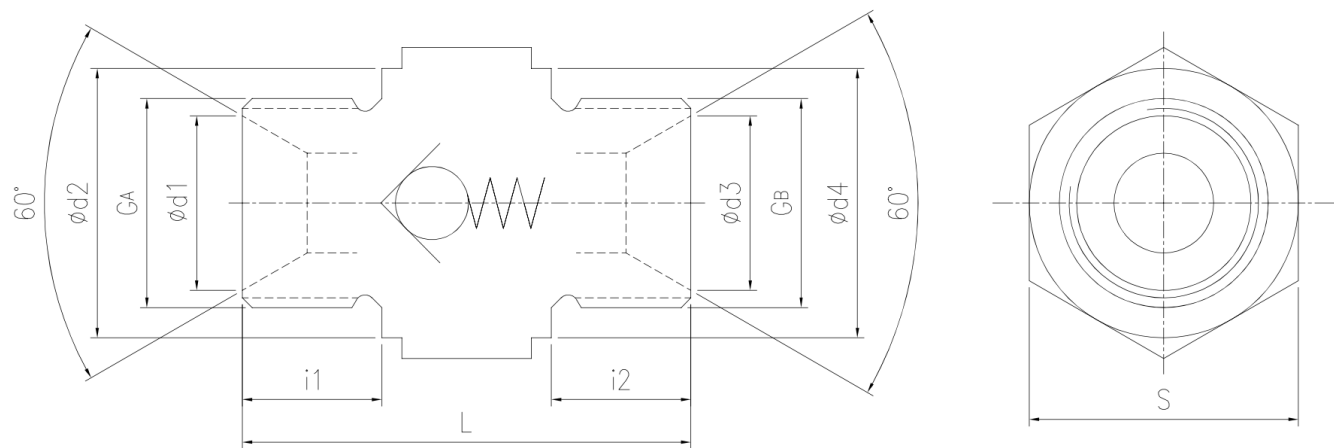
CVL valves are line-type, direct-acting, ball-type, spring-loaded non-return/ check valves. These valves are used for blocking or isolating a specific oil path or load holding in one direction. The valves allow oil flow in A-B direction (above the cracking pressure) but block oil flow in the reverse direction. These valves may be mounted directly to the pump delivery port or manifold block ports.

The unique feature of CVL-type valves is that they are built into a standard adapter-style fitting, thereby eliminating the need for additional fittings that are commonly used with line-mounted valves. This not only makes the assembly compact, but also eliminates potential leakage points. The valves are designed for reduced pressure differential at rated flows and for medium pressure applications.

A variety of customisations are possible, including custom cracking pressures, stainless steel MOC, and other custom configurations, including thread patterns and very low cracking pressures. Consult factory with details to tailor the product to your application requirements.

Size	Size	Flow LPM	Max Pr. Bar	Wt. Kg
CVL 2	G 3/8"	30	315	0.02
CVL 3	G 1/2"	60	315	0.05
CVL 4	G 3/4"	120	315	0.10
CVL 5	G 1"	160	315	0.15
CVL 6	G 1-1/4"	225	315	0.18
CVL 7	G 1-1/2"	300	315	0.22

ΔP = 5 bar at rated flows calculated considering ISO VG46 at 50° C



Size	GA	GB	$\phi d1$	$\phi d2$	$\phi d3$	$\phi d4$	i1	i2	L	S
CVL2-1x	G3/8"	G3/8"	14.0	21.0	14.0	21.0	12.0	12.0	38.0	22.0
CVL3-1x	G1/2"	G1/2"	17.5	26.0	17.5	26.0	14.0	14.0	45.0	27.0
CVL4-1x	G3/4"	G3/4"	22.9	32.0	22.9	32.0	16.0	16.0	48.0	32.0
CVL5-1x	G1"	G1"	28.7	39.0	28.7	39.0	19.0	19.0	55.0	41.0
CVL6-1x	G1.1/4"	G1.1/4"	36.8	49.0	36.8	49.0	20.0	20.0	61.0	50.0
CVL7-1x	G1.1/2"	G1.1/2"	42.7	55.0	42.7	55.0	22.0	22.0	66.0	55.0

All dimensions in mm

Spare List*

Seal Kit CVL2	SSVCVL2
Seal Kit CVL3	SSVCVL3
Seal Kit CVL4	SSVCVL4
Seal Kit CVL5	SSVCVL5
Seal Kit CVL6	SSVCVL6
Seal Kit CVL7	SSVCVL7

*Only for ED seal version