

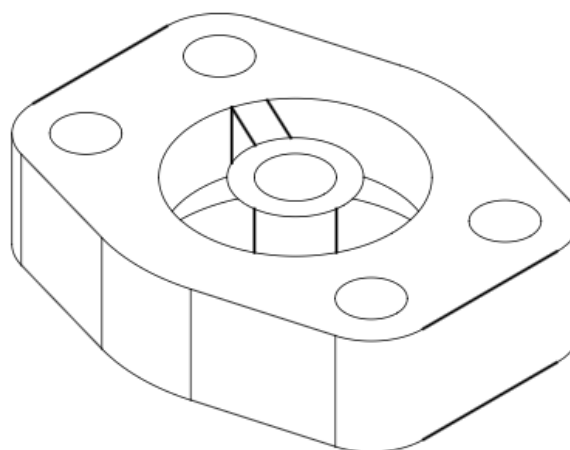
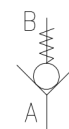


CHECK VALVE - SAE

Sandwich SAE Type | 1" to 2" | 3000/6000 psi

Specification/ Technical Data

Max. Operating Pressure	400 bar
Max Flow	750 LPM
Mounting	Sandwich Type
Design	Disc Type
Cracking Pressure	~ 1 bar
Surface Treatment	Zinc Plated
Body Material	Carbon Steel
Media	Mineral Oil
Oil Temperature Range	+10 to 60°C
Oil Viscosity	ISO VG 46-100
Oil Cleanliness (ISO 4406)	20/18 /15
Orientation	Any
Weight (approx.)	0.9...4.5 Kg



SAE flange mounted direct operated check valves can be mounted directly to the delivery port of pumps with SAE type 61 or 62 ports. These compact valves block oil flow in one direction and allow flow in opposite direction subject to a cracking pressure. While they may be mounted anywhere in an hydraulic circuit to isolate a specific branch of oil path, they are ideally suited for pump delivery ports since they protect the pumps from pressure spikes and shocks that may otherwise damage the pump.

Use of these compact valves eliminate the need for line mounted check valves on the pump delivery port and thereby reduce chances of leakage.

* Consult factory for other sizes & custom requirements

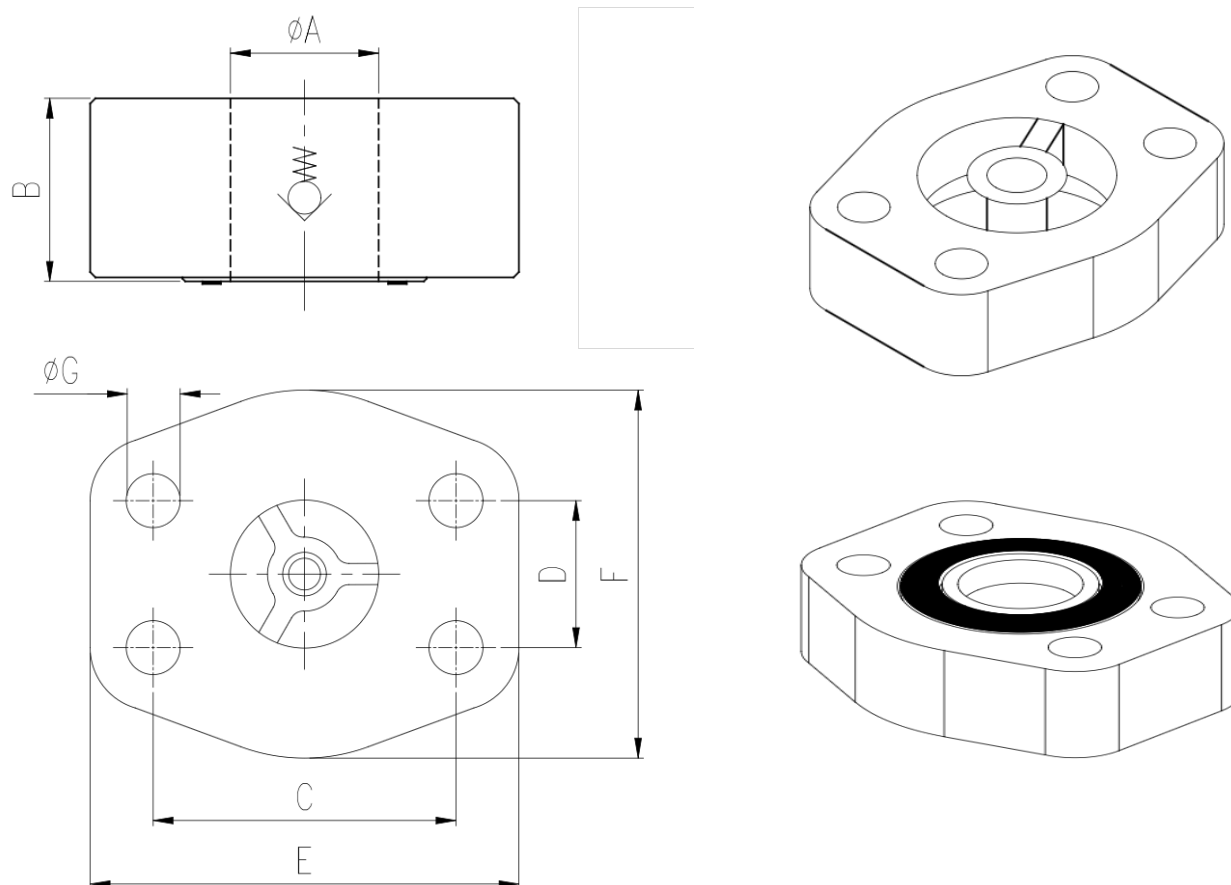
Ordering Information

Basic Code	Check Valve - SAE	CVSAE
Series	3000 (3)/ 6000 (6)PSI	3/ 6
Size	DN 25...50	25
Seals	Viton	-
Version		1x

Size	Size Inch	Max Flow LPM	Max Pressure Bar	Weight Kg
DN 25	1"	200	345 (400)	0.90 (1.20)
DN 32	1-1/4"	300	280 (350)	1.20 (1.70)
DN 40	1-1/2"	450	210 (350)	1.90 (2.80)
DN 50	2"	750	210 (350)	2.50 (4.50)

Figures in brackets () are for 6000PSI series

Dimensions



3000 PSI Standard Pressure Series (According to ISO 6162-1: 2012)

Nominal Size	Size Inch	ϕA	B	C	D	E	F	ϕG	Seal Size
DN 25	1"	38.5	30	52.4	26.2	70.0	58.4	10.5	$\phi 31.5 \times \phi 38.5 \times 3.5 \text{thk}$
DN 32	1-1/4"	43.7	32.5	58.7	30.2	79.5	72.6	10.5	$\phi 37.5 \times \phi 44.5 \times 3.5 \text{thk}$
DN 40	1-1/2"	50.8	38	69.9	35.7	94.0	82.2	13.0	$\phi 47.5 \times \phi 54.5 \times 3.5 \text{thk}$
DN 50	2"	62.8	40	77.8	42.9	102.0	96.4	13.0	$\phi 56.0 \times \phi 63.0 \times 3.5 \text{thk}$

6000 PSI Standard Pressure Series (According to ISO 6162-2: 2012)

Nominal Size	Size Inch	ϕA	B	C	D	E	F	ϕG	Seal Size
DN 25	1"	38.8	30	52.2	27.8	81	69.6	13	$\phi 31.5 \times \phi 38.5 \times 3.5 \text{thk}$
DN 32	1-1/4"	44.5	32.5	66.6	31.8	95	77.2	15	$\phi 37.5 \times \phi 44.5 \times 3.5 \text{thk}$
DN 40	1-1/2"	51.6	38	79.3	36.5	113	95.0	17	$\phi 47.5 \times \phi 54.5 \times 3.5 \text{thk}$
DN 50	2"	67.6	40	96.8	44.5	133	113.8	21	$\phi 56.0 \times \phi 63.0 \times 3.5 \text{thk}$

Bolt Kits are not supplied with the valves
All dimensions in mm