

DC MOTOR POWER-UNIT



12 & 24VDC | 160bar | With Metal Tank

Specification/ Technical Data

Max. Pressure	160 bar
Max Flow	5.4lpm
Supply Voltage	12 or 24VDC
Max Operating Duration	30 secs
Oil Tank Capacity	6 ltr
Tank Body	Metal (MS)
Starter Switch	Included
Media	Mineral Oil
Oil Temperature Range	+10 to 60°C
Oil Viscosity	ISO VG 46-100
Oil Cleanliness (ISO 4406)	20/18 /15
Orientation	Horizontal or Vertical
Weight (approx.)	15 - 20 Kg



DC motor-driven hydraulic power-units, are commonly used in mobile applications where an electric battery provides the supply voltage. The electric motor is mechanically coupled to a hydraulic gear pump, which is then connected to a hydraulic circuit to perform the required function. They are commonly used in forklifts, garage trucks, scissor lifts, etc.

FLUIDIK make DCPU systems are available in 12V and 24V supply voltages and come with a 6 L metal oil tank as standard and may be mounted either horizontally or vertically.

The product is available with three basic design options, namely, the P & T port version (PT), single-acting version (SA), and double-acting version (DA).

In the PT version, the unit will act only as a power source with built-in pressure relief and check valve, and the user is expected to build the hydraulic circuit downstream using hand lever valves.

In the single-acting (SA) version, the unit may be used to operate typical material handling equipment with single acting cylinder where the lowering is gravity controlled, but a throttle mechanism is built in to limit the lowering speed.

For precise control, many users may use a double-acting cylinder where the DA version is recommended. This version is available with an optional H spool with pilot check valve (POCV) version where load holding in an intermediate position may be required, viz., scissor lift applications or material loading lift. A throttle mechanism is also built in to control the lowering speed

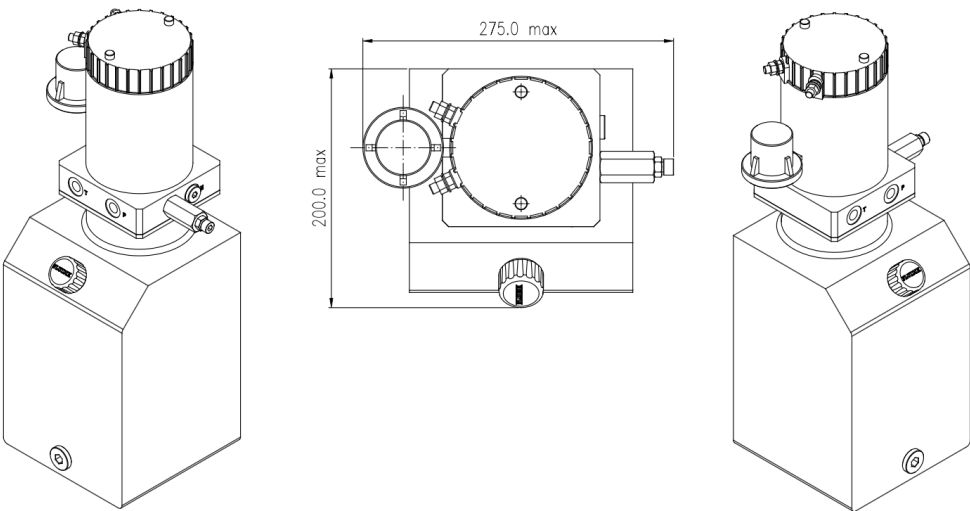
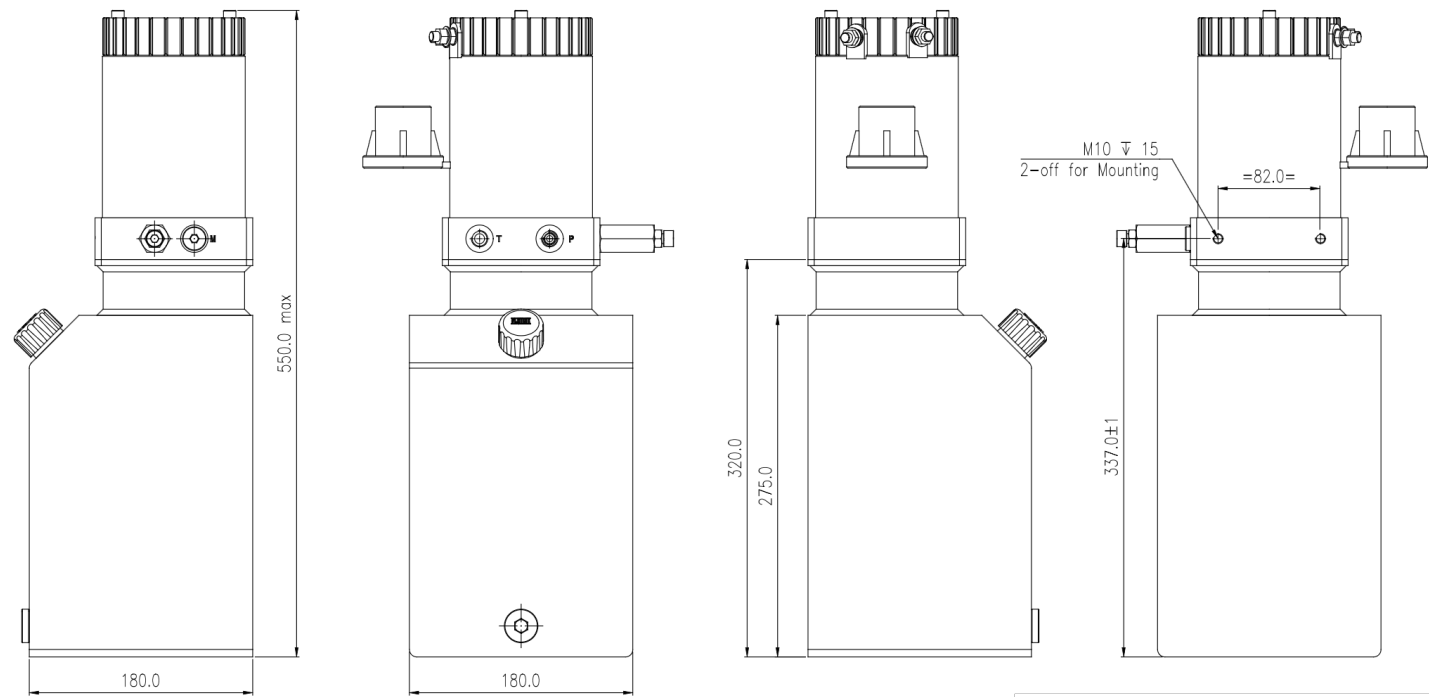
A control pendant with 3m wire is provided standard with SA and DA versions. All versions come with solenoid starting switch as standard.

Ordering Information

Basic Code	DC Motor Powerunit	DCPU
Type	PT/ SA/ DA	DA
Type	Type 1/ 2/ 3/ 4	3
Version		1x

Type 3 & 4 available only with DA version
Control Pendant with 3m wire is supplied as standard with SA and DA versions
Lowering control throttle valve is standard with SA and DA versions

DC - Pump Motor Version (DCPU - PT)

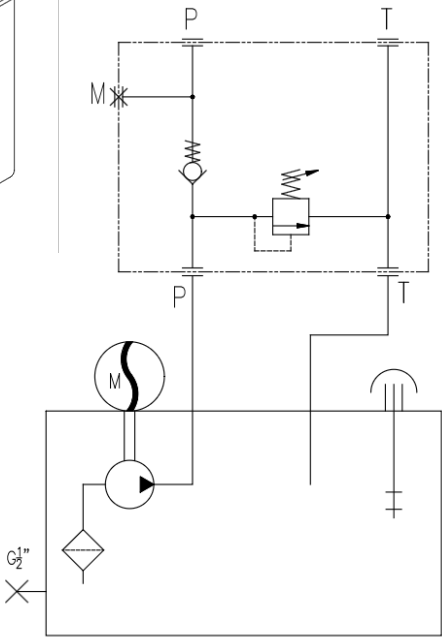


Type	Motor Rating	Pump LPM	Voltage V DC	Max Pressure (Bar)
Type 1	1.6kW	5.0	12V	130
Type 2	2.2kW	5.4	24V	160

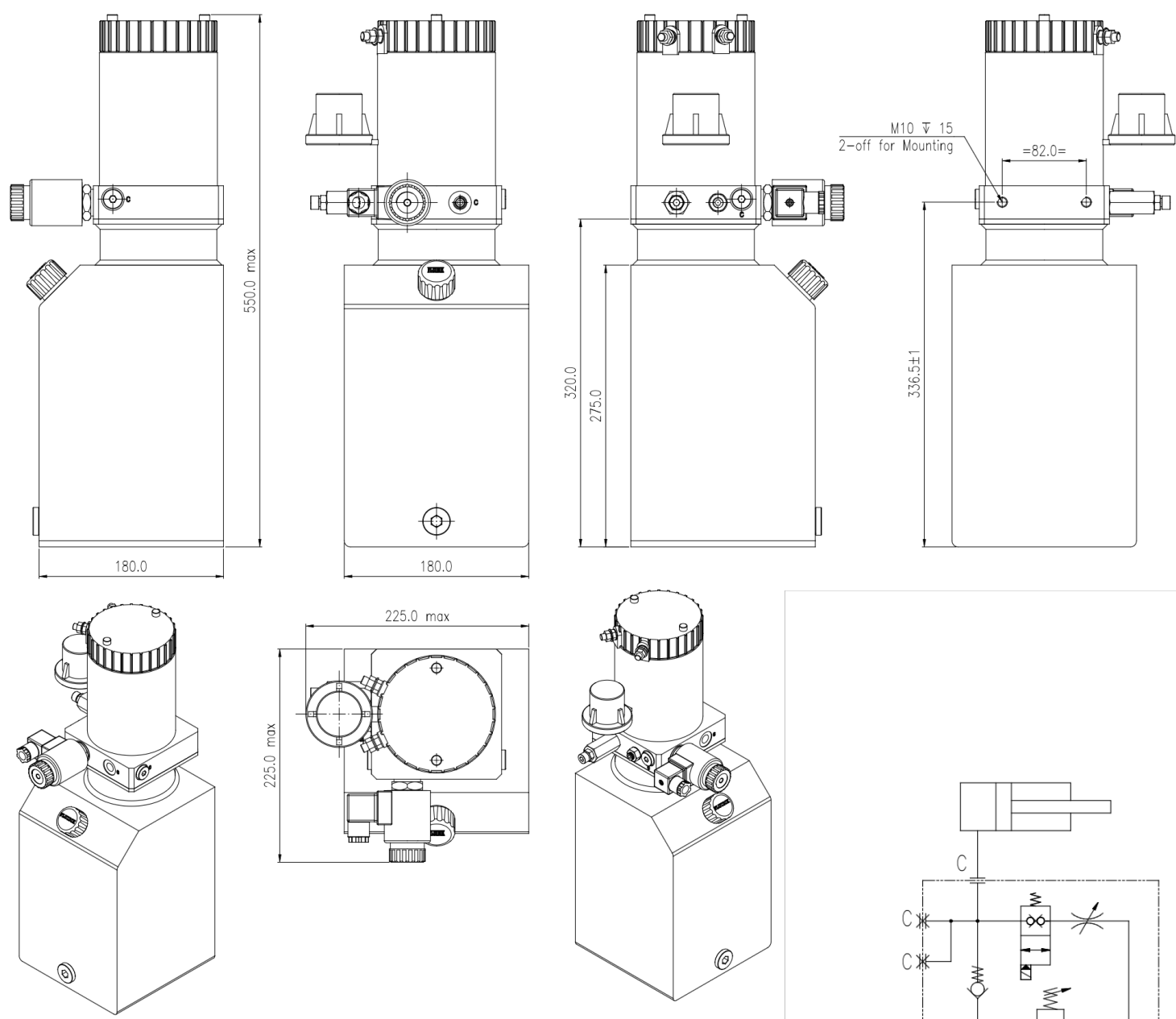
Note:
Port P,T & M: 1/4" (F) BSP
Oil tank powder coated - black (MOC MS)
Not be used continuously for more than 30 secs
All dimensions in mm

Spare List

SealKit	SSVDCPU-PT1x
---------	--------------



DC Power Unit - Single Acting (DCPU - SA)

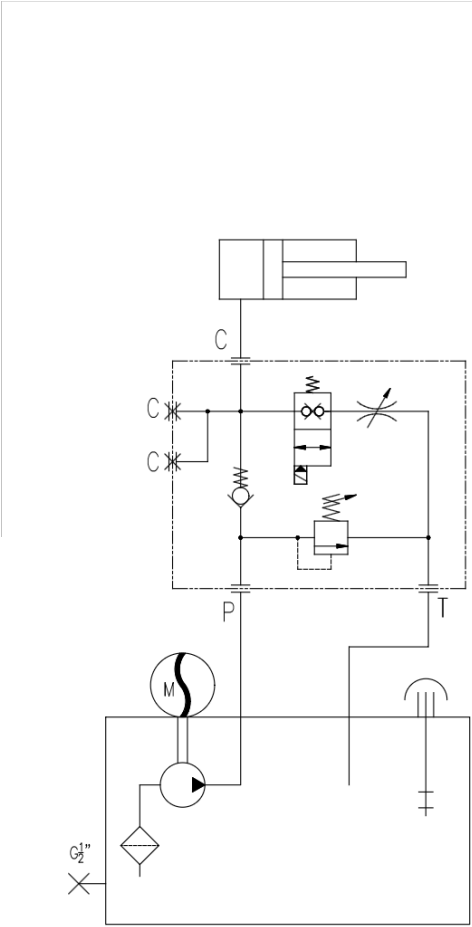


Type	Motor Rating	Pump LPM	Voltage V DC	Max Pressure (Bar)
Type 1	1.6kW	5.0	12V	130
Type 2	2.2kW	5.4	24V	160

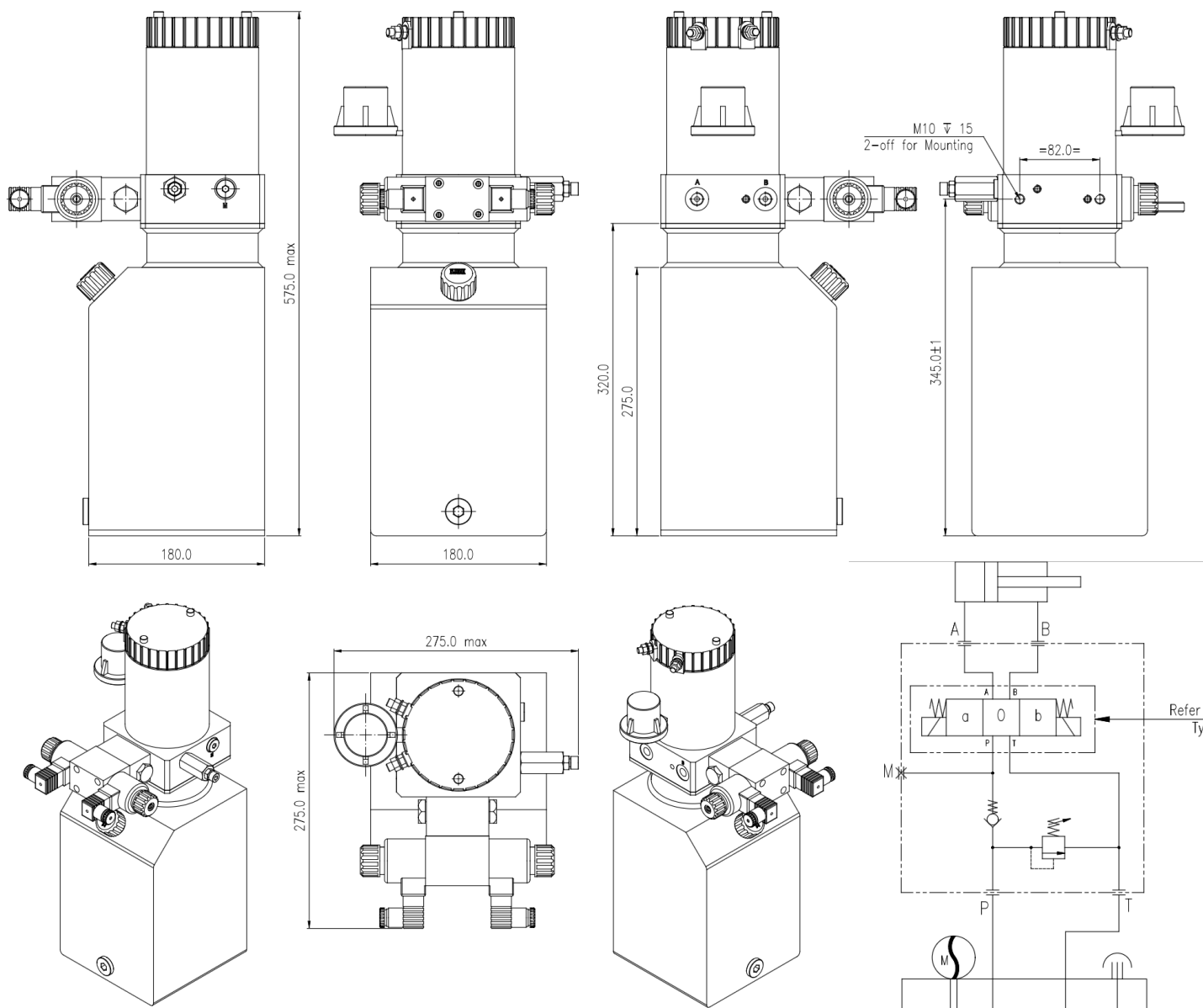
Note:
Port C: 1/4" (F) BSP
Oil tank powder coated - black (MOC MS)
Not be used continuously for more than 30 secs
All dimensions in mm

Spare List

SealKit	SSVDCPU-SA1x
---------	--------------



DC Power Unit - Double Acting (DCPU - DA)



Type	Motor Rating	Pump LPM	Voltage V DC	Max Pressure (Bar)	Spool Type
Type 1	1.6kW	5.0	12V	130	G
Type 2	1.6kW	5.0	12V	130	H with POCV
Type 3	2.2kW	5.4	24V	160	G
Type 4	2.2kW	5.4	24V	160	H with POCV

All dimensions in mm

Spare List

SealKit	SSVDCPU-DA1x
---------	--------------

Note:
Port A, B & M: 1/4" (F) BSP
Oil tank powder coated - black (MOC MS)
H Spool with POCV is recommended for intermediate position holding applications

