

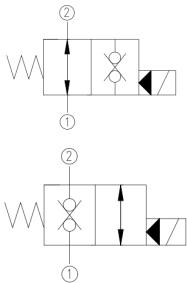
SOLENOID POPPET VALVE - DHF06



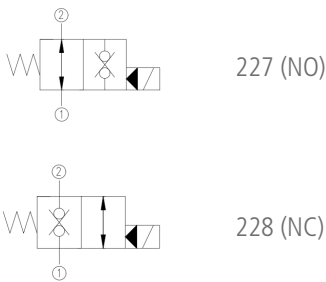
2/2 Type | NO/NC | Screw-in Cartridge

Specification/ Technical Data

Max. Operating Pressure	210 bar
Maximum Flow	16 lpm
Max. Internal Leakage	0.3ml/min
Flow Direction	1-2/ 2-1
Actuation	Solenoid
Min. Voltage (of nominal)	85%
Material	Carbon Steel
Media	Mineral Oil
Oil Temperature Range	+10 to 80°C
Oil Viscosity	ISO VG 46-100
Oil Cleanliness (ISO 4406)	20/18 /15
Orientation	Any
Weight (approx.)	2.0Kg

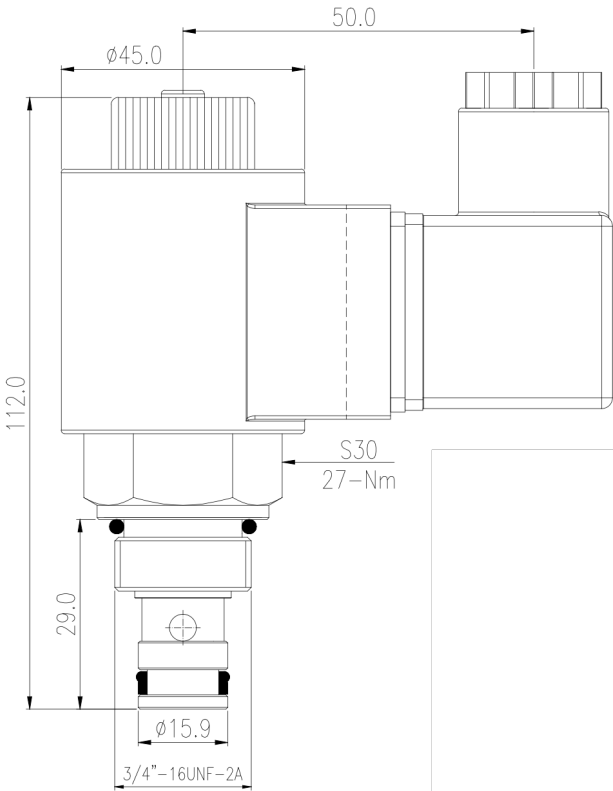


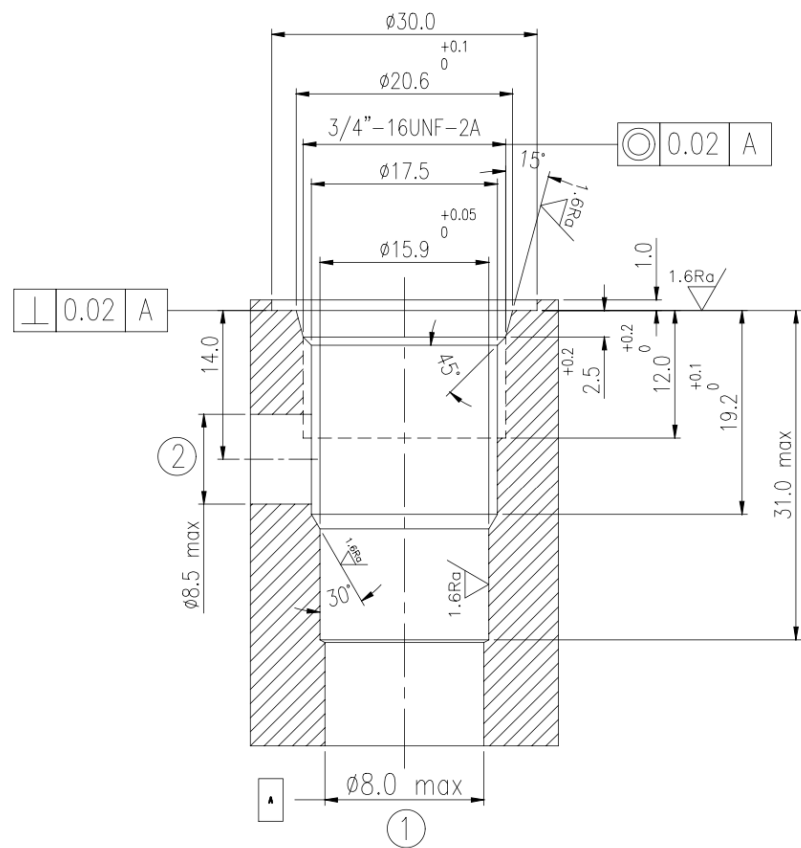
DHF 06 valves are solenoid-operated direct-acting poppet type 2-way and 2-position directional control valves that may be actuated by either DC or AC voltages to open or close the oil path. Once the coils are energised, the poppet opens/ closes and allows/ blocks oil flow from 1 to 2 or from 2 to 1 based on valve selection. The valve is designed for low pressure drop due to its design and is available in either 12/24VDC or 220VAC versions.



Ordering Information

Basic Code		DHF
Size/ NG	NG6	06
Type	227/ 228	227/ 228
Sol. Voltage	G12, 24/ A220	G12..A220
Seal Material	Viton	No code
Version		1x



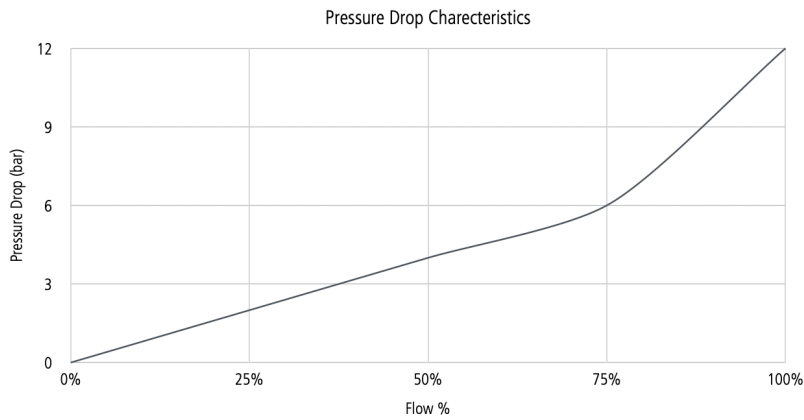


Spare List

SealKit	SSVDHF061x
---------	------------

Performance Chart

Recorded at TOil = 40°C and 68 cSt.



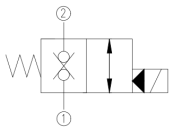
SOLENOID POPPET VALVE - DHF08



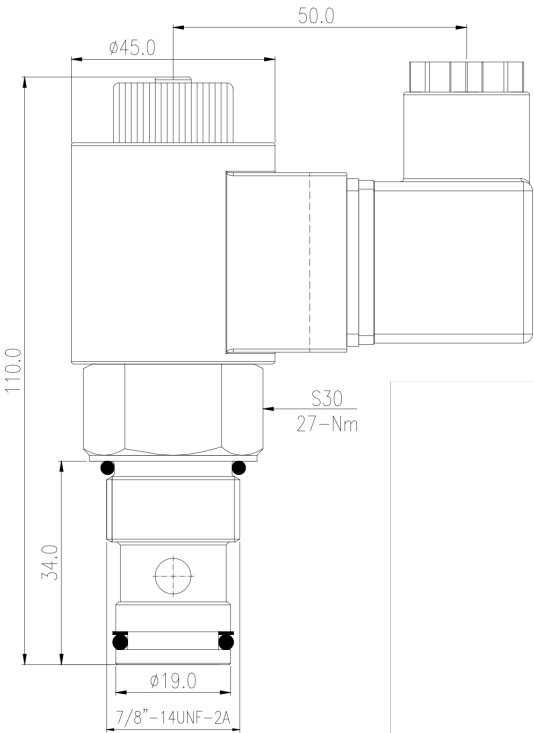
2/2 Type | NC | Screw-in Cartridge

Specification/ Technical Data

Max. Operating Pressure	210 bar
Maximum Flow	36 lpm
Max. Internal Leakage	0.3ml/min
Flow Direction	1-2/ 2-1
Actuation	Solenoid
Min. Voltage (of nominal)	85%
Material	Carbon Steel
Media	Mineral Oil
Oil Temperature Range	+10 to 80°C
Oil Viscosity	ISO VG 46-100
Oil Cleanliness (ISO 4406)	20/18 /15
Orientation	Any
Weight (approx.)	2.0Kg

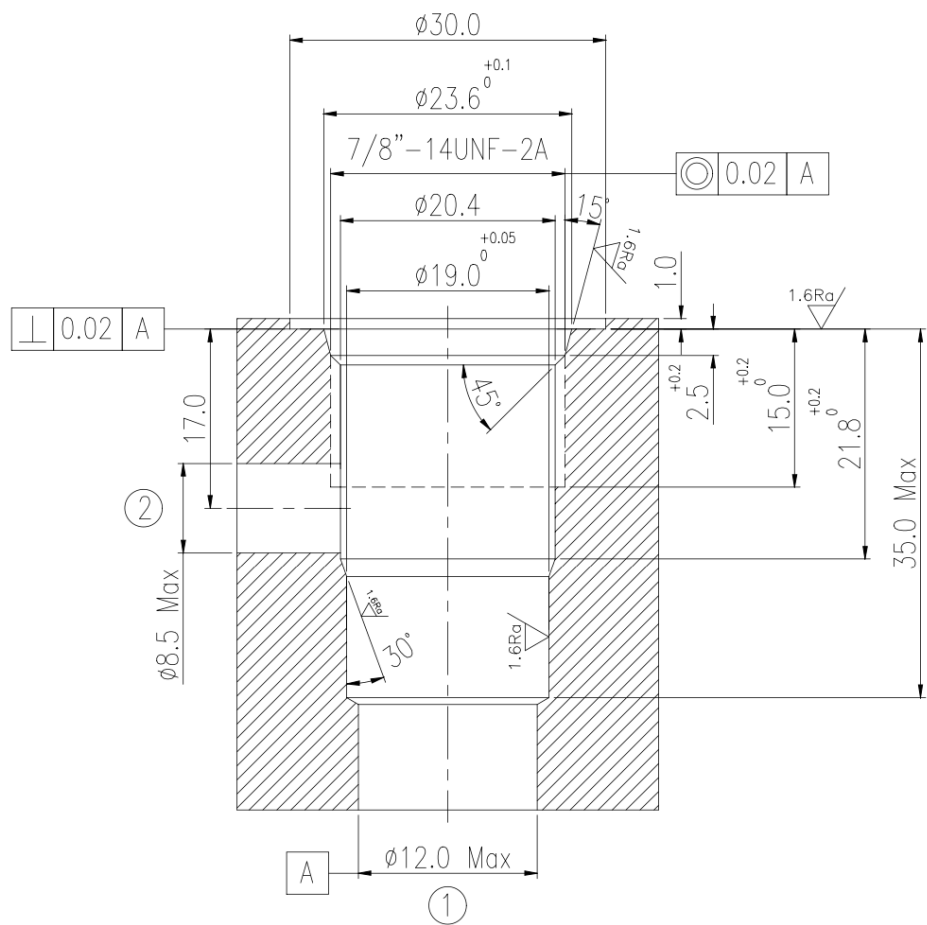


DHF 08 valves are solenoid-operated direct-acting poppet type 2-way and 2-position directional control valves that may be actuated by either DC or AC voltages to open the oil path. Once the coils are energised, the poppet opens and allows free flow from 1 to 2 or from 2 to 1 based on application requirements. The valve is designed for low pressure drop due to its design and is available in either 12/24VDC or 220VAC versions.



Ordering Information

Basic Code		DHF
Size/ NG	NG8	08
Type	Normally Closed	228
Sol. Voltage	G12, 24/ A220	G12..A220
Seal Material	Viton	No code
Version		1x



Spare List

SealKit	SSVDHF081x
---------	------------

Performance Chart

Recorded at TOil = 40°C and 68 cSt.

