

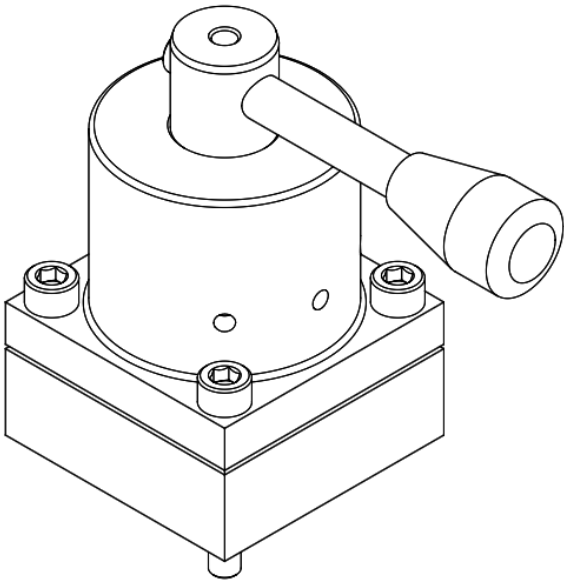
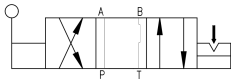
ROTARY DIRECTION CONTROL VALVE (F4RDC)



4/3 Type | Rotary Valve | 700 bar

Specification/ Technical Data

Max. Working Pressure	700 bar
Max Oil Flow	10 LPM
Mounting	Sub-Plate
Design	Rotary Disc Type
Body Material	Steel/ Aluminium
Operation	Detent Hand Lever
Interface	Factory Standard
Media	Mineral Oil
Oil Temperature Range	+10 to 60°C
Oil Viscosity	ISO VG 46-100
Oil Cleanliness (ISO 4406)	20/18 /15
Orientation	Any
Weight (approx.)	1.5 Kg (1.0Kg)



F4RDC valves are 4-way, 3-position manual valves that use a rotational movement to open, close and divert pressurised oil flow rather than the conventional sliding type design with spool. Unlike conventional valves, these “rotary” valves are compact, reduce internal leakages and are suitable for high pressure applications like hydraulic jacks, strand pullers and tensioning equipment.

A variety of flow paths are available as indicated in the following pages of the document and come with detent actuation as standard. The valves are available with both carbon steel or light weight high strength aluminium body.

The mounting is a sub-plate design with factory standard interface with specially designed hand lever for easy actuation. The valve is to be operated before pressurising or after depressurising the system to ensure longer life of the valve and prevent damage to internal components.

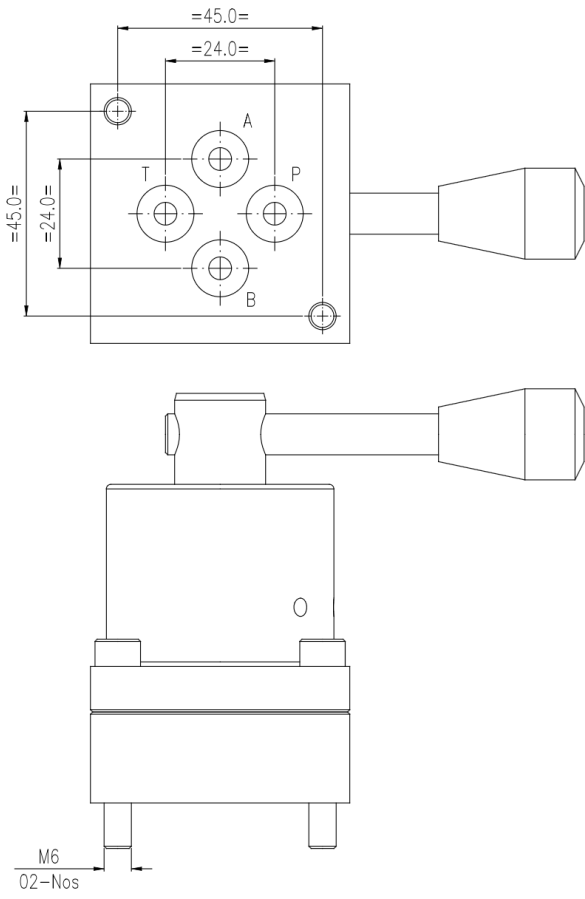
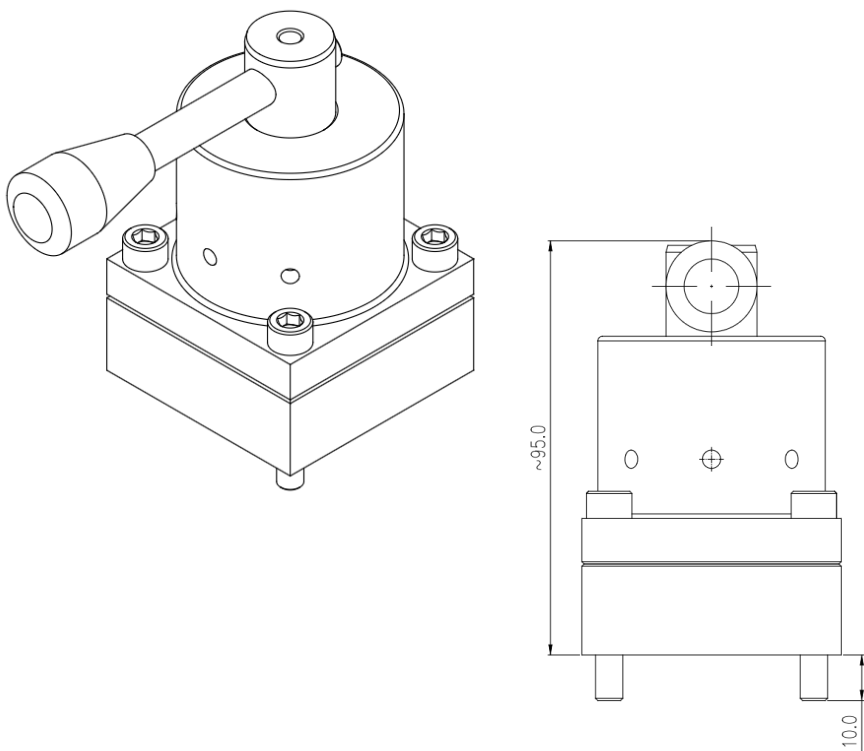
Consult factory for any customisation for higher flows, spool types or MOC requirements.

Refer Page 2 for spool options

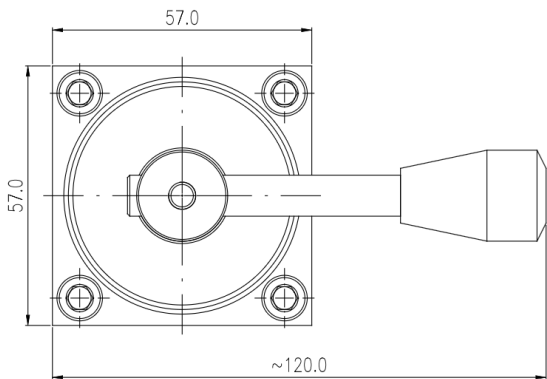
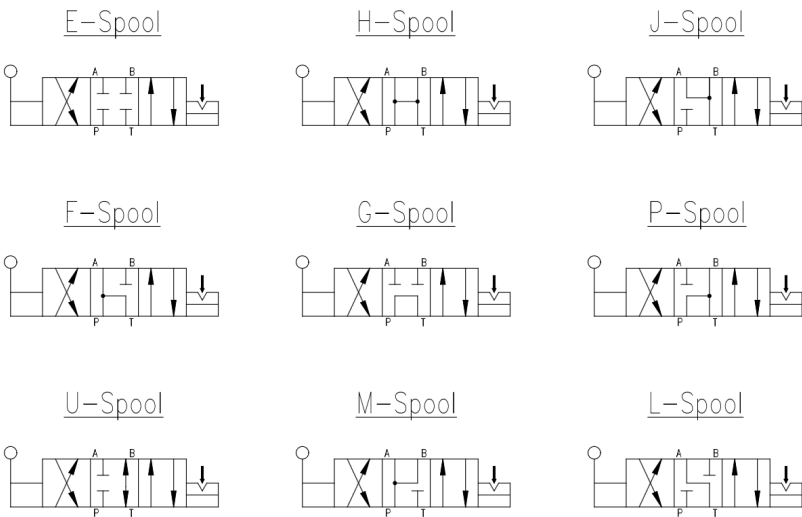
Ordering Information

Basic Code	Rotary DCV	F4RDC
Spool Type	E, H, J, F, G, P, U, M, L	G
Version	1x	1x
Body MOC	Steel / Aluminium	AL

Dimensions



Spool Options



Rectangular Ring $\varnothing 6 \times \varnothing 10 \times 2 \text{thk} \times 4 \text{nos}$
All dimensions in mm

Spare List

SealKit	SSVF4RDC1x
---------	------------