

DIRECTION CONTROL VALVE - F4WE6



CETOP 3 | Spool Type | 420bar

Specification/ Technical Data

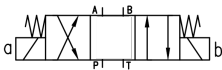
Maximum Pressure	420 bar
Maximum Flow	60 lpm
Max. Pressure in T port	160 bar
Max. Internal Leakage*	20ml/min
Mounting	CETOP 3
Manual Override	Standard
Body Material	SG Iron
Media	Mineral Oil
Oil Temperature Range	+10 to 80°C
Oil Viscosity	ISO VG 46-100
Oil Cleanliness (ISO 4406)	20/18 /15
Orientation	Any
Weight	1.5 - 2.2 Kg

\* max internal leakage per 100bar

Note: Direction control valve F4WE6 will be supplied with bolt-kit and LED solenoid plug

Ordering Information

Basic Code	4-way Spool Valve	F4WE
Size/ NG	NG6/ CETOP 3	6
Spool Config.	D, G, J, H, E	D
Spool Type	D - Detent/ Omit - Spring	-
Voltage	G12, G24, A220	G24
Seal Material	NBR	No code
Version		1x



Directional Control Valves (DCV) are spool type valves used in hydraulics to change the oil flow direction using electric solenoids. These valves use wet-pin solenoids in AC or DC voltages and are used for vertical stacking valve assemblies. A variety of spool configurations including 4-pos/3-way and 4-pos/2-way are available with 12, 24VDC and 220VAC. The valves meet the requirement of CETOP3 mounting interface (ISO4401) and are compatible with equivalent valves of other manufacturers.

G Spool

D Spool

H Spool

DD Spool

J Spool

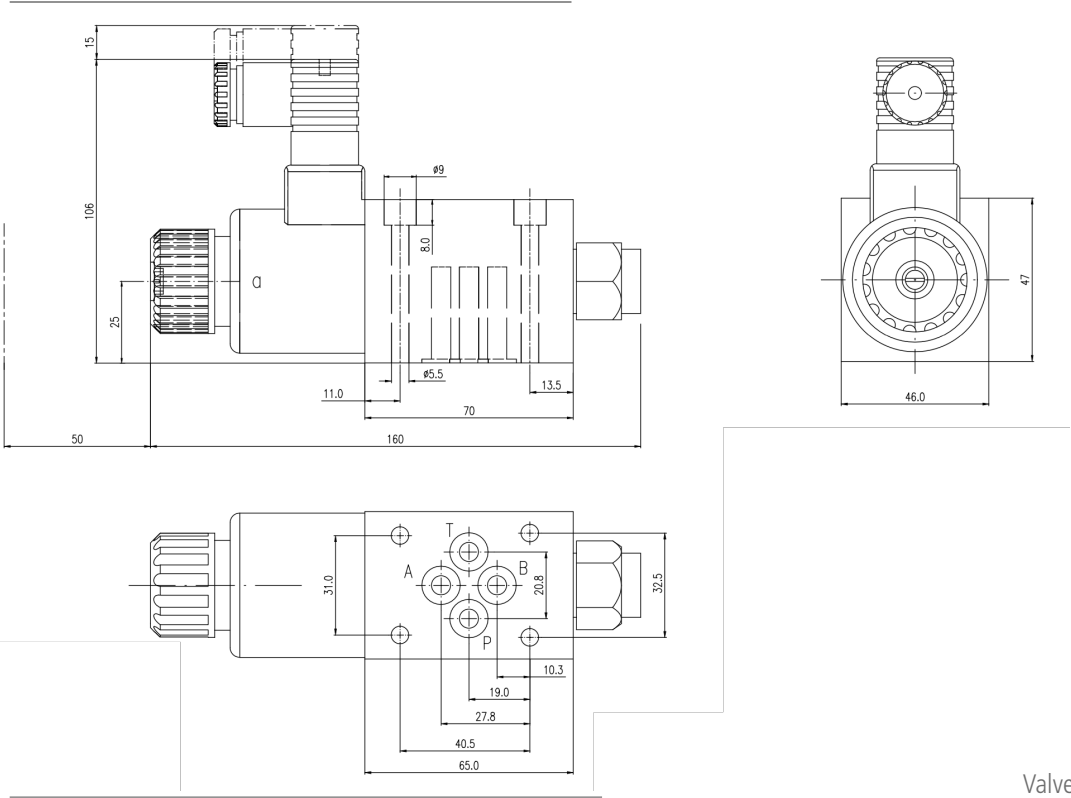
E Spool

Detent option available only in D spool

Pressure Drop+	P to A	P to B	A to T	B to T
G Spool	4 (12) bar	4 (12) bar	3 (10) bar	3 (10) bar
H Spool	3 (8) bar	3 (8) bar	3.5 (8) bar	3.5 (8) bar
J Spool	2.5 (9) bar	2.5 (9) bar	2.5 (8.5) bar	2.5 (8.5) bar
E Spool	3 (10) bar	3 (10) bar	3 (8.5) bar	3 (8.5) bar
D Spool	3 (12) bar	3 (12) bar	3 (10) bar	3 (10) bar

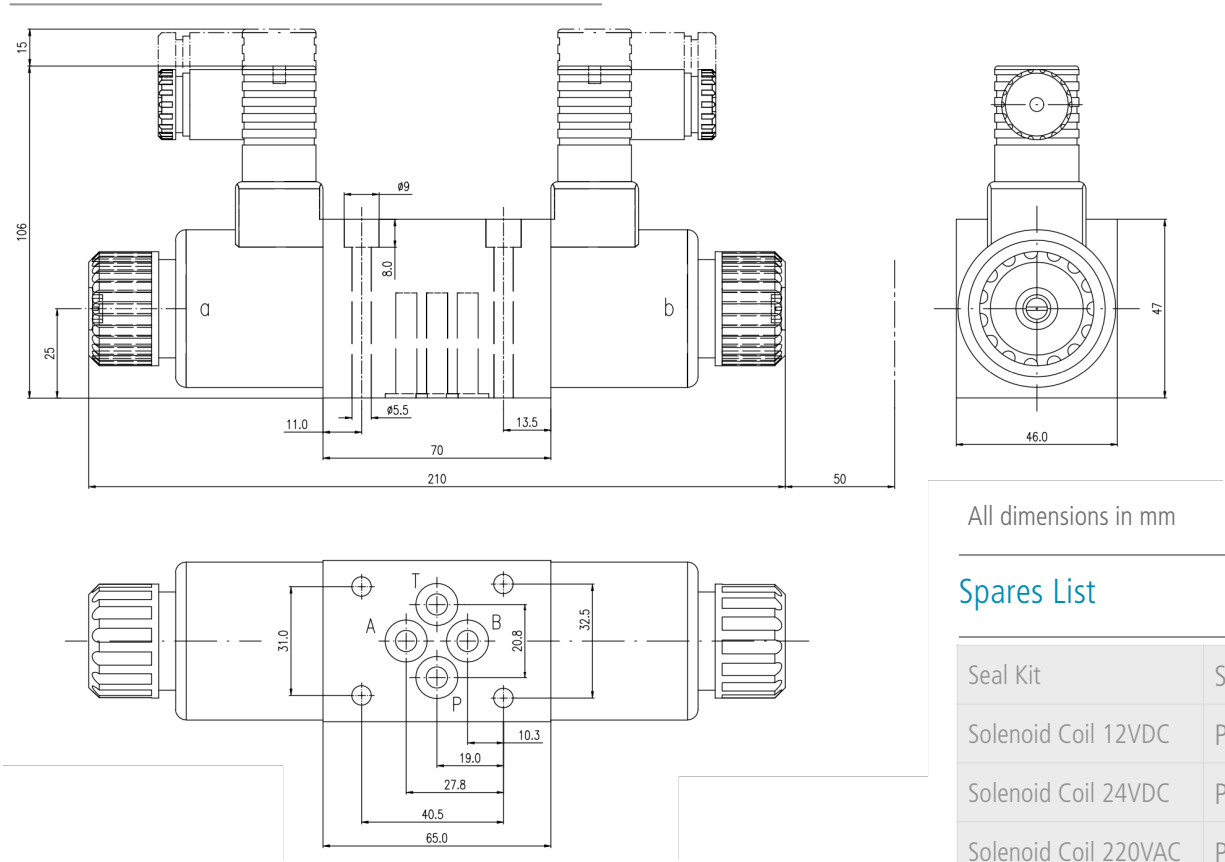
+ Measured at 30lpm and (60lpm). Recorded at TOil = 40°C and 68 cSt.

Single Solenoid



Valve Mounting Bolts M5 x 50mm x 4nos  
Tightening Torque 9N-m  
Face O ring 9.0 x 1.75mm x 4nos/ NBR

Double Solenoid



All dimensions in mm

Spares List

Seal Kit	SSVF4WE61x
Solenoid Coil 12VDC	PN01885R00
Solenoid Coil 24VDC	PN02005R00
Solenoid Coil 220VAC	PN01924R00