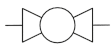


BALL VALVE - FKHM/ FKHF

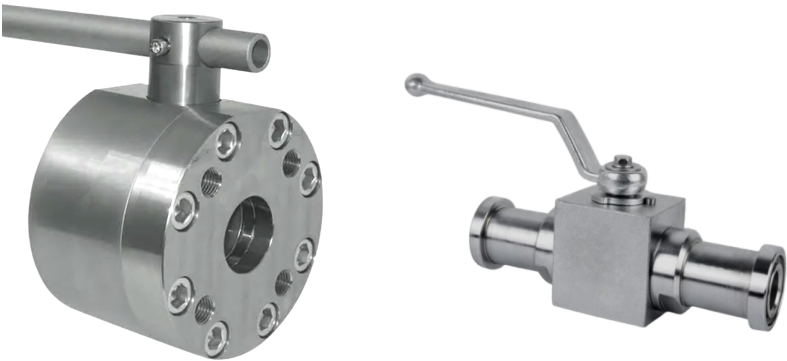


2-way | Carbon Steel | 1 to 3"



Specification/ Technical Data

Maximum Pressure	210/ 350 bar
Size	DN 25 - 80
Body	Steel
Ball	Steel
Stem	Steel
Mounting	SAE Type
Media	Mineral Oil
Oil Temperature Range	+10 to 80°C
Oil Viscosity	ISO VG 46-100
Oil Cleanliness (ISO 4406)	20/18 /15
Orientation	Any
Weight	4 - 55 Kg



High-pressure ball valves with SAE flanges are specialised valves designed for robust and leak-free operation in demanding hydraulic systems. These valves are primarily used as on/off devices or shut off the flow of hydraulic oil, water-glycol, and other mixed liquids in high-pressure applications. They are commonly found in industries like oil and gas, construction machinery, agricultural equipment, marine, and general industrial hydraulics.

Ball valve type FKHM and FKHF are 2-way bi-directional valves rated for pressures upto 350bar. The ball valves use carbon steel body with high strength hard chrome plated alloy steel ball. The sealing material used is low friction, high stiffness and with excellent dimensional stability for superior performance.

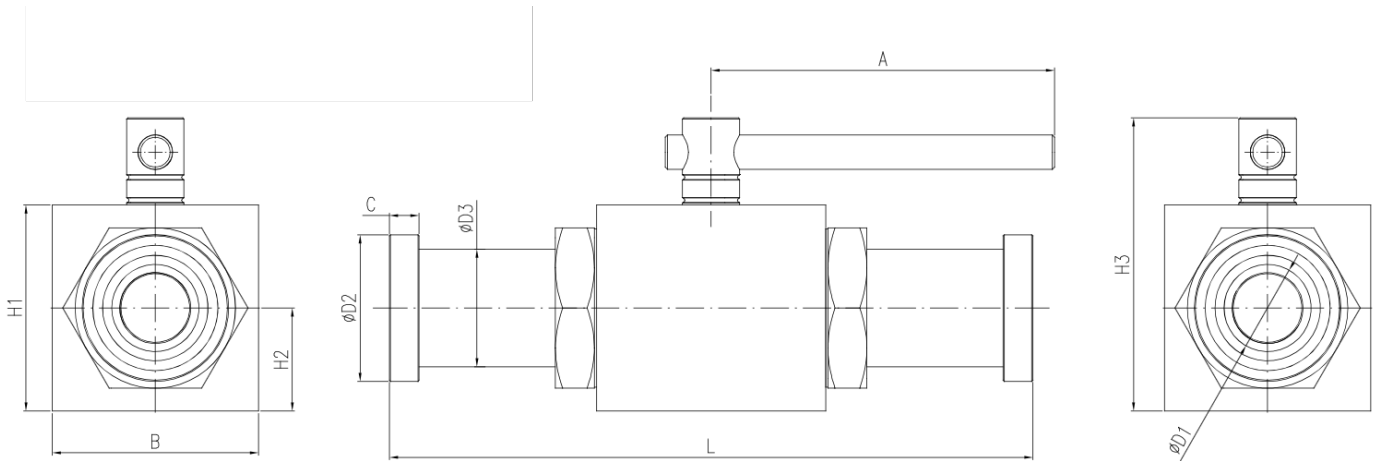
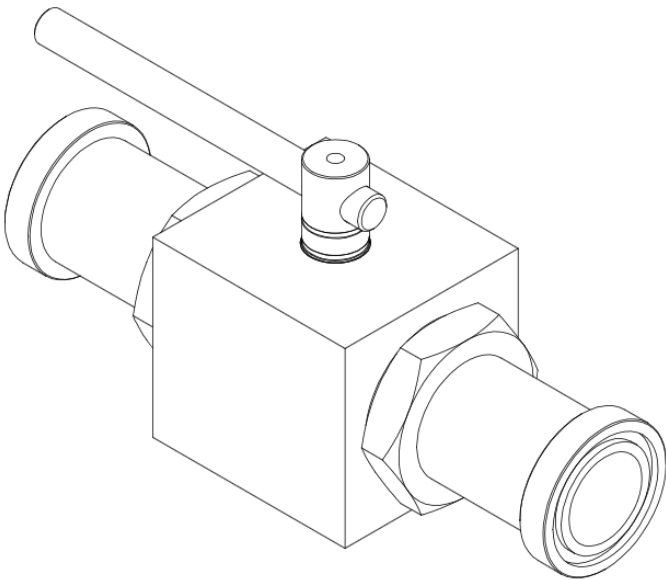
These valves are designed for use with SAE flanges, which adhere to ISO 6162-1 and ISO 6162-2 standards and provide reliable, leak-free, and easy-to-assemble/disassemble connection, where traditional threaded fittings might be challenging or not possible.

Ordering Information

Basic Code	2-way Ball Valve	FKHM/ FKHF
Sizes	1, 1-1/2, 2, 2-1/2, 3"	1...3"
Handle	Standard design	No code
Version		1x

Type	Size	Max. Pressure	Max. Pressure	Weight Kg
FKHM - 1	DN 25	350 bar	6000 psi	4
FKHM - 1-1/2"	DN 40	350 bar	6000 psi	7
FKHM - 2"	DN 50	350 bar	6000 psi	10
FKHF - 1-1/2"	DN 40	350 bar	6000 psi	18
FKHF - 2"	DN 50	350 bar	6000 psi	26
FKHF - 2-1/2"	DN 65	210 bar	3000 psi	45
FKHF - 3"	DN 80	210 bar	3000 psi	55

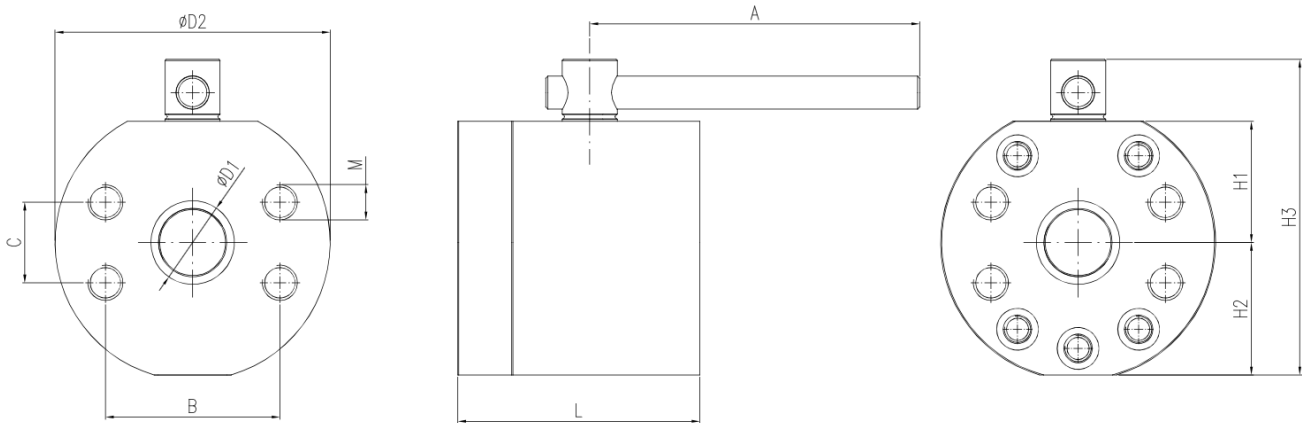
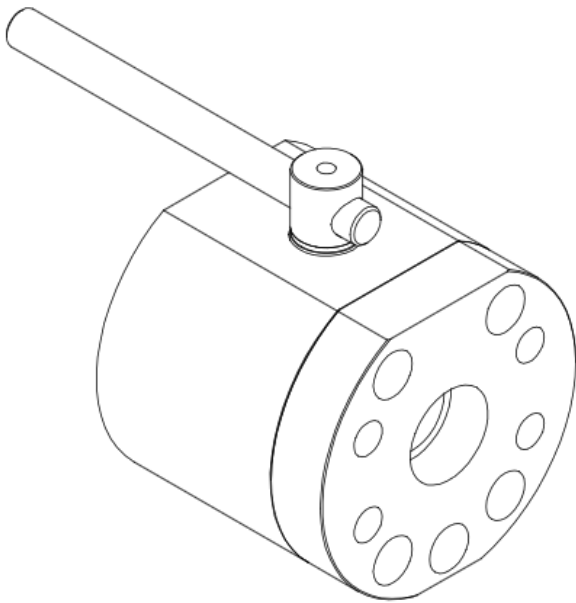
Ball Valve - FKHM



Model	Size	Max. Pressure (bar)	A	B	C	ØD1	ØD2	ØD3	H1	H2	H3	L
FKHM-1"	1" SAE 6000 psi	350	110	70	10	25	48.1	38.5	70	35	120	198
FKHM-1.1/2"	1.1/2" SAE 6000 psi	350	150	90	13	38	64.0	51.3	90	45	150	281
FKHM-2"	2" SAE 6000 psi	350	210	115	13	50	79.9	67.3	115	57.5	175	315

All dimensions in mm

Ball Valve - FKHF



Model	Size	Max. Pressure (bar)	A	B	C	ØD1	ØD2	H1	H2	H3	M	L
FKHF-1.1/2"	1.1/2" SAE 6000 psi	350	150	79.3	36.5	38	125	55	60	150	M16	110
FKHF-2"	2" SAE 6000 psi	350	160	96.8	44.5	50	150	65.5	72	180	M20	135
FKHF-2.1/2"	2.1/2" SAE 3000 psi	210	175	88.9	50.8	62.5	180	85	85	220	M12	150
FKHF-3"	3" SAE 3000 psi	210	175	106.4	61.9	75	190	87.5	87.5	225	M16	150

All dimensions in mm