

HAND PUMP CARTRIDGE - FHP



10cc/stroke | 250bar | Cartridge Type

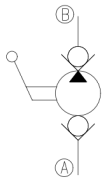
Specification/ Technical Data

Max. Operating Pressure	250 bar
Maximum Flow	10cc/ stroke
Max. Internal Leakage	0.3ml/min
Flow Direction	A to B
Manual Torque	250N-m
Operation	Push to Pressurise
Material	Carbon Steel
Media	Mineral Oil
Oil Temperature Range	+10 to 80°C
Oil Viscosity	ISO VG 46-100
Oil Cleanliness (ISO 4406)	20/18 /15
Orientation	Any
Weight (aprox.)	0.3Kg

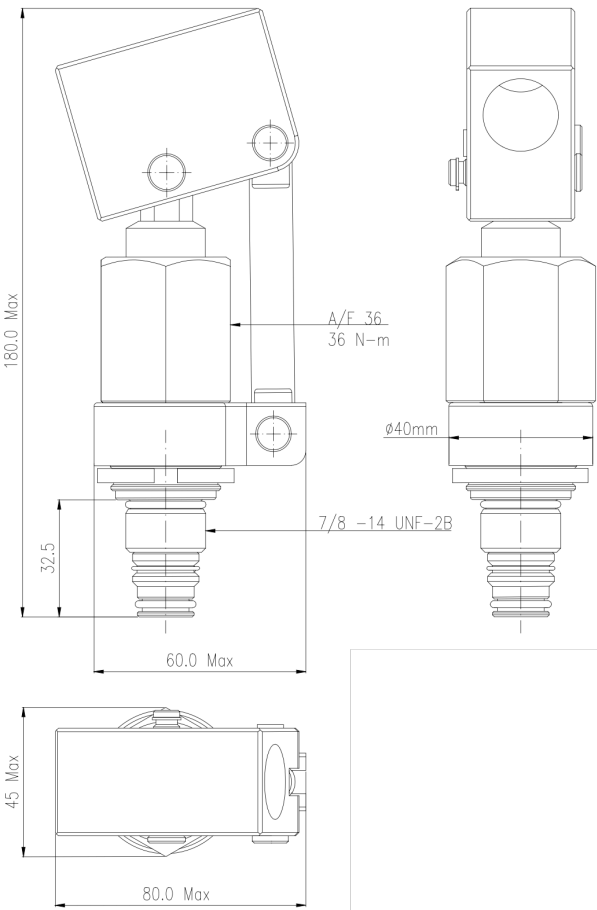
Note: Contact factory for stainless steel MOC and handle

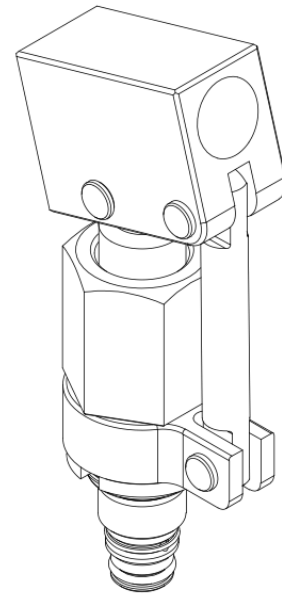
Ordering Information

Basic Code		FHP
Size	10cc/ stroke	10
Max. Pressure	250bar	250
Type	Cartridge/ Line/ Tank	K/L/T
Seal Material	Viton	No code
Version		1x



FHP hand-pumps are cartridge-type manual pumps that are designed with built-in check valves for hydraulic applications. These hand-pumps are designed for pressures up to 250 bar and are available as cartridge or line or tank-mounted versions. The pump can be supplied with a suitable handle (to be ordered separately). The product is ideal for applications where there is a need for manual actuation in case of power failure or emergency requirements.



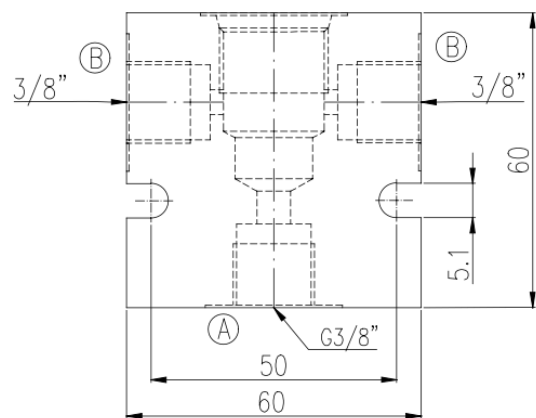


Technical drawing of a mechanical part, likely a bracket or base plate, showing dimensions and features.

Dimensions and features:

- Overall width: 60
- Overall height: 60
- Central circular feature (A) diameter:  $\phi 5$
- Distance from center of feature A to the left edge: 50
- Distance from center of feature A to the right edge: 50
- Distance from center of feature A to the top edge: 30
- Distance from center of feature A to the bottom edge: 1.5
- Distance from center of feature A to the left side feature (B): 3/8"
- Distance from center of feature A to the right side feature (B): 3/8"
- Distance from center of feature A to the bottom edge: 5.1
- Side features (B) are located at the top corners.

### Tank Mounted Block



### Line Mounted Block

## Spare List

SealKit	SSPFHP10K1x
---------	-------------



[www.fluidik.co](http://www.fluidik.co)