

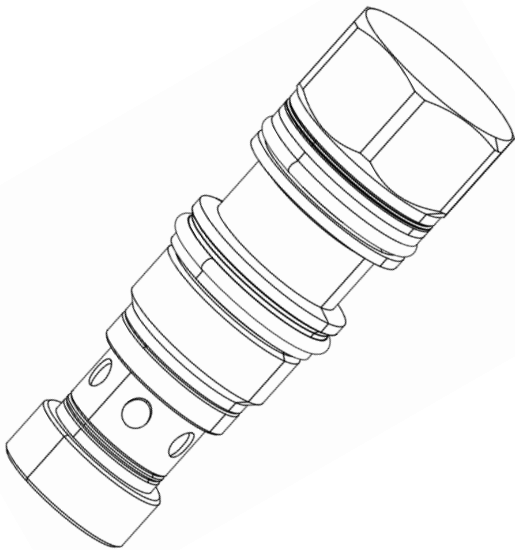
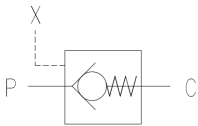
PILOT CHECK VALVE - CARTRIDGE (FKCB)



Ball Type | Cartridge or Line Mounted | 350 bar

Specification/ Technical Data

Max. Operating Pressure	350 bar
Cracking Pressure	~ 1.0 bar
Pilot Pressure	350 bar
Area Ratio	3:1
Max Flow at ΔP 15bar	40 LPM
Design	Spring Loaded Ball
Body Material	Carbon Steel
Media	Mineral Oil
Oil Temperature Range	+10 to 60°C
Oil Viscosity	ISO VG 46-100
Oil Cleanliness (ISO 4406)	20/18 /15
Orientation	Any
Weight (approx.)	0.25 (1.0) Kg



Pilot operated check valves are non-return valves that block oil flow in one direction and can be released using a hydraulic pilot line. In the opposite direction, the valves will allow free oil flow.

FKCB valves are cartridge type valves that fit into a standard cavities. These valves are ideal for applications where load holding functions are required or where creeping movement of the hydraulic cylinders need to be arrested.

A line mounted version is also available with independent P, C and X threaded ports.

Key Features:

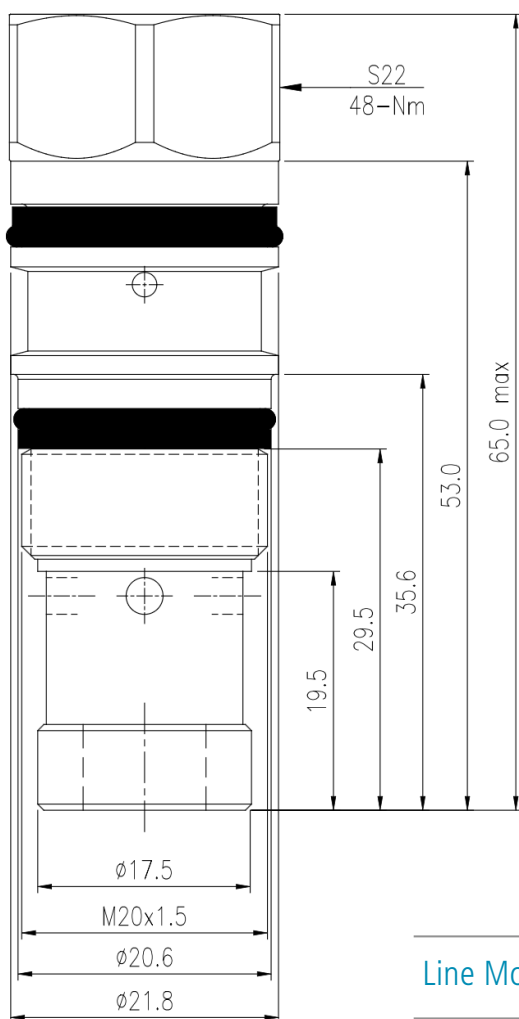
- Designed to fit into standard cavity
- Customisation option available
- Low leakage design
- Viton seals as standard

Note: Refer PCV-05 catalogue for 700bar version

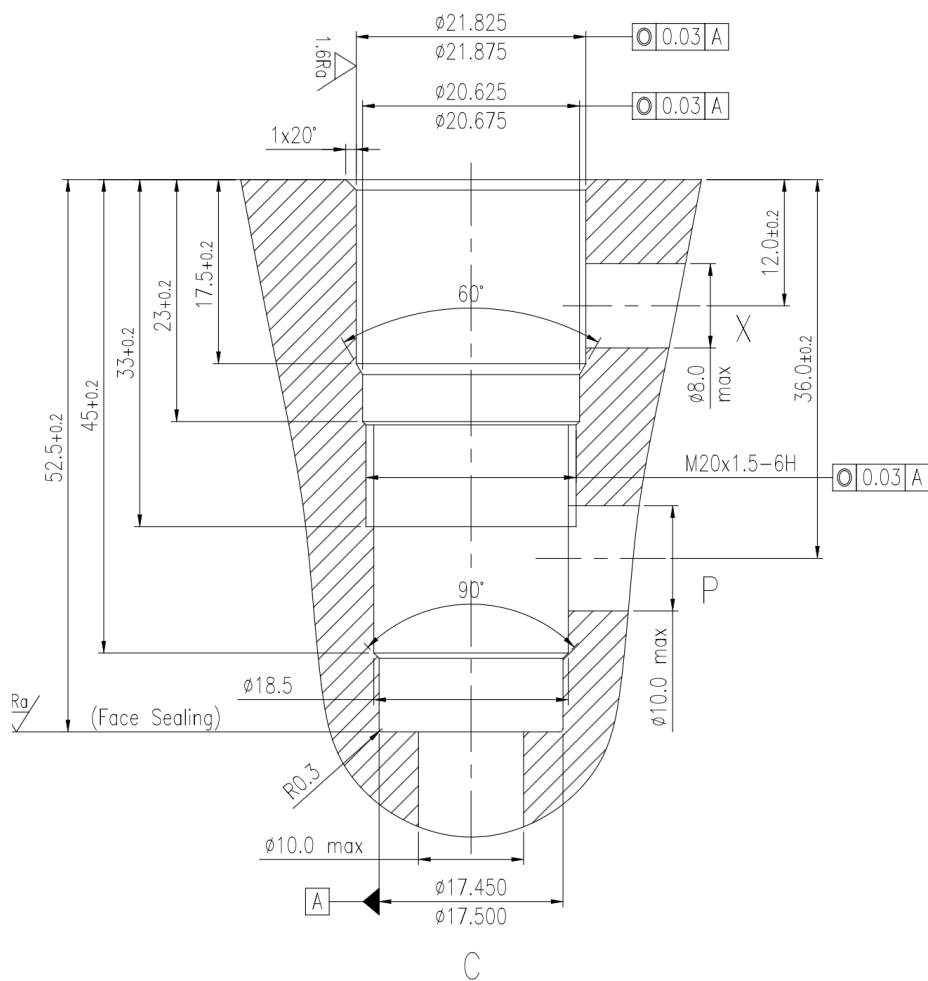
Ordering Information

Basic Code	Pilot Check Valve	FKCB
Cracking Pr.	1.0 bar	-
Seal MOC	Viton	-
Type	Cartridge/ Line (L)	No code/ L
Version		1x

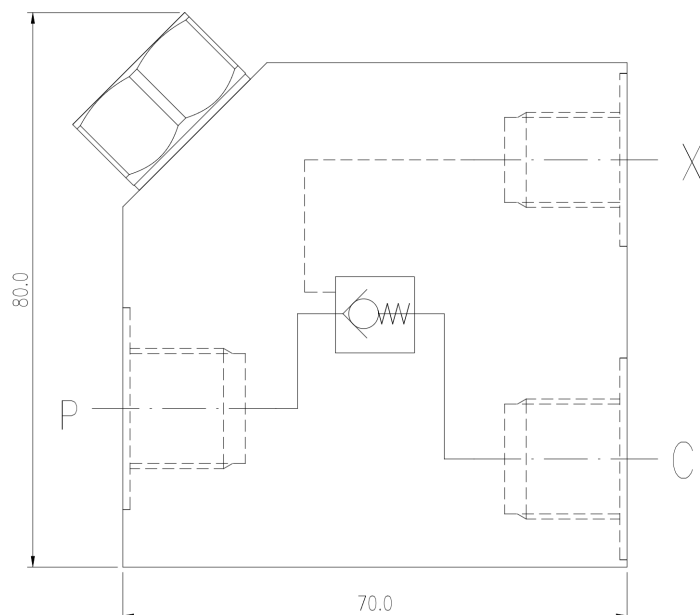
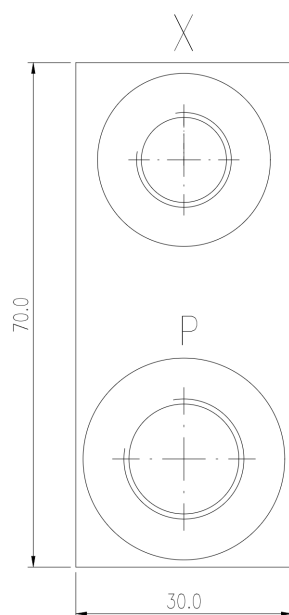
## Dimensions



## Cavity Details



## Line Mounted Version



P & C ports: 3/8" BSP (F)

X port: 1/4" BSP (F)

All dimensions in mm

## Spare List

SealKit	SSVFKCB1x
---------	-----------

BEMCO FLUIDTECHNIK LLP, Khanapur Road, Udyambag, Belgaum - 590 008 KA IN +91 831 4263001 [info@fluidik.co](mailto:info@fluidik.co)

This document including the data, specifications and other product information are the exclusive property of BEMCO FLUIDTECHNIK LLP. It may not be reproduced or shared to third parties without written consent. The data specified above only serve to describe the product and no statements concerning a certain condition or suitability for a certain application can be derived from this information. The information given does not release the user from the obligation of own judgment and verification of suitability of the product for the application requirements.

