

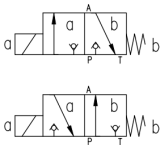
SOLENOID POPPET VALVE - FM3...



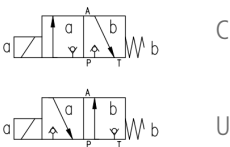
3/2 Type | 700bar | CETOP3

Specification/ Technical Data

Max. Operating Pressure	700 bar
Maximum Flow	20 lpm
Max. Internal Leakage	0.3ml/min
Max Pr. On T port	80 bar
Actuation	Solenoid
Min. Voltage (of nominal)	85%
Material	Cast Body
Media	Mineral Oil
Oil Temperature Range	+10 to 80°C
Oil Viscosity	ISO VG 46-100
Oil Cleanliness (ISO 4406)	20/18 /15
Orientation	Any
Weight (approx.)	2.5Kg



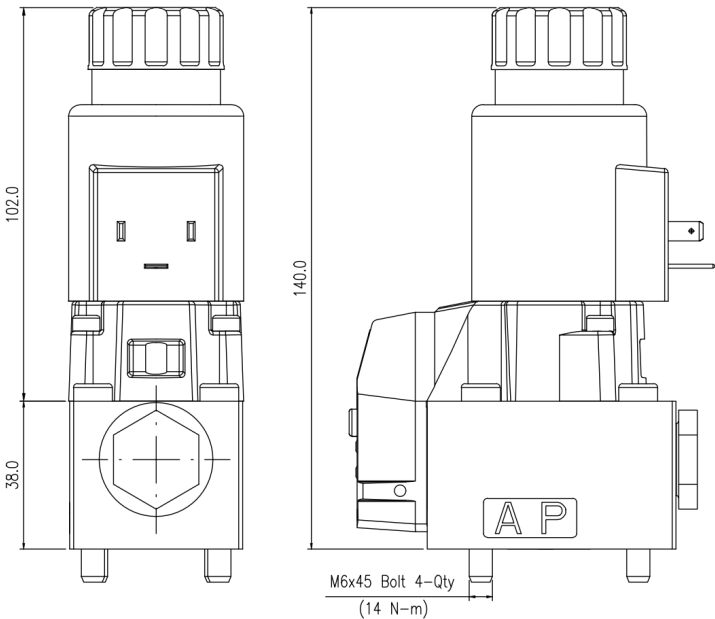
FM3... directional control valves are 3/2 direct operated poppet type valves rated for operating pressures up to 700bar. The valves use wet-pin type 24VDC or 220VAC solenoid coils and meet CETOP3 mounting requirements as per ISO4401. The valves are designed for vertical stacking and come with in-built manual override feature.

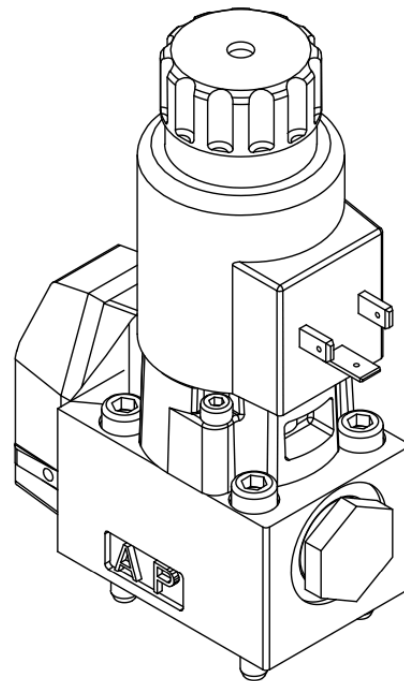
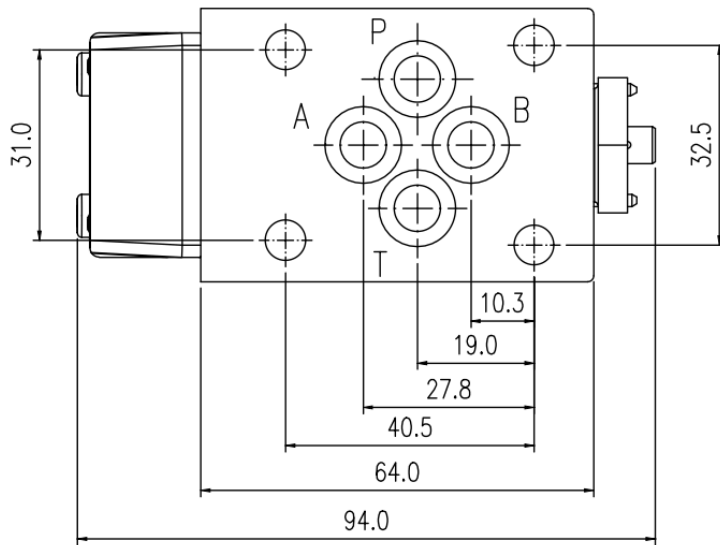


Note: Consult factory for pneumatically actuated valves

Ordering Information

Basic Code		FM3SEW
Type	C/U	C/U
Actuation	Solenoid	No code
Sol. Voltage	G24/ A220	G24/A220
Seal Material	Viton	No code
Version		1x





Spare List

BEMCO FLUIDTECHNIK LLP, Khanapur Road, Udyambag, Belgaum - 590 008 KA IN +91 831 4263001 info@fluidik.co


FLUIDIK

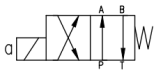
SOLENOID POPPET VALVE - FM4...



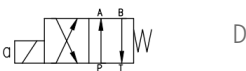
4/2 Type | 700bar | CETOP3

Specification/ Technical Data

Max. Operating Pressure	700 bar
Maximum Flow	20 lpm
Max. Internal Leakage	0.3ml/min
Max Pr. On T port	80 bar
Actuation	Solenoid
Min. Voltage (of nominal)	85%
Material	Cast Body
Media	Mineral Oil
Oil Temperature Range	+10 to 80°C
Oil Viscosity	ISO VG 46-100
Oil Cleanliness (ISO 4406)	20/18 /15
Orientation	Any
Weight	3.0Kg



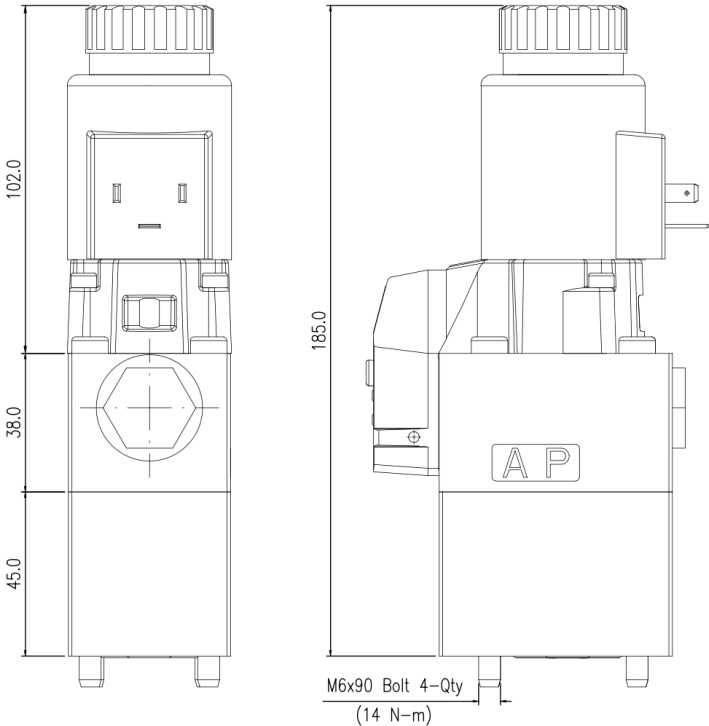
FM4... directional control valves are 4/2 direct operated poppet type valves rated for operating pressures up to 700bar. The valves use wet-pin type 24VDC or 220VAC solenoid coils and meet CETOP3 mounting requirements as per ISO4401. The valves are designed for vertical stacking and come with in-built manual override feature.

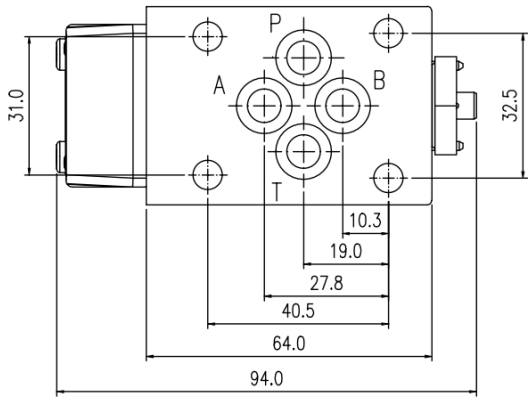
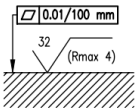


Note: Consult factory for pneumatically actuated valves

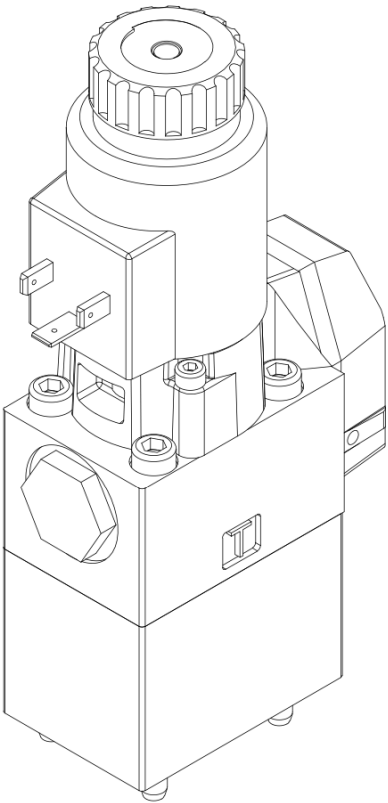
Ordering Information

Basic Code		FM4SEW
Type	Flow Pattern D	D
Pump Flow	1 <5lpm, 5 if >5lpm	5
Actuation	Solenoid	No code
Sol. Voltage	G24/ A220	G24/A220
Seal Material	Viton	No code
Version		1x





Note: Add suitable orifice or throttle in A line for hydraulic jack applications



Spare List

SealKit	SSVFM3-41x
---------	------------

BEMCO FLUIDTECHNIK LLP, Khanapur Road, Udyambag, Belgaum - 590 008 KA IN +91 831 4263001 info@fluidik.co

This document including the data, specifications and other product information are the exclusive property of BEMCO FLUIDTECHNIK LLP. It may not be reproduced or shared to third parties without written consent. The data specified above only serve to describe the product and no statements concerning a certain condition or suitability for a certain application can be derived from this information. The information given does not release the user from the obligation of own judgment and verification of suitability of the product for the application requirements.

