

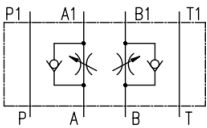
DOUBLE THROTTLE CHECK VALVE - FZ2FS6



CETOP 3 | Sandwich Type | 315bar

Specification/ Technical Data

Maximum Pressure	315 bar
Maximum Flow	60 lpm
Type	Sandwich
Mounting	CETOP 3
Control	Meter-in/ out
Pressure Compensation	No
Body Material	SG Iron
Media	Mineral Oil
Oil Temperature Range	+10 to 80°C
Oil Viscosity	ISO VG 46-100
Oil Cleanliness (ISO 4406)	20/18 /15
Orientation	Any
Weight	1.2 Kg



Sandwich type double throttle cum check valves are used in hydraulic circuits to limit the oil flow in A and B ports. The valves allow free flow of oil from ports A to A1 and B to B1 via the by-pass check valves. In oil flow direction A1 to A and B1 to B, the adjustable throttle can be used to throttle the flow as per requirement. The valves are designed to be used in meter-out (discharge throttle) and/ or meter-in (supply throttle) circuits dependent on position of seal plate (or O ring plate).

The valves meet the requirement of CETOP3 mounting interface (ISO4401) and are compatible with equivalent valves of other manufacturers.

*Meter-in or Meter-out is dependent on position of seal plate supplied as standard with valve

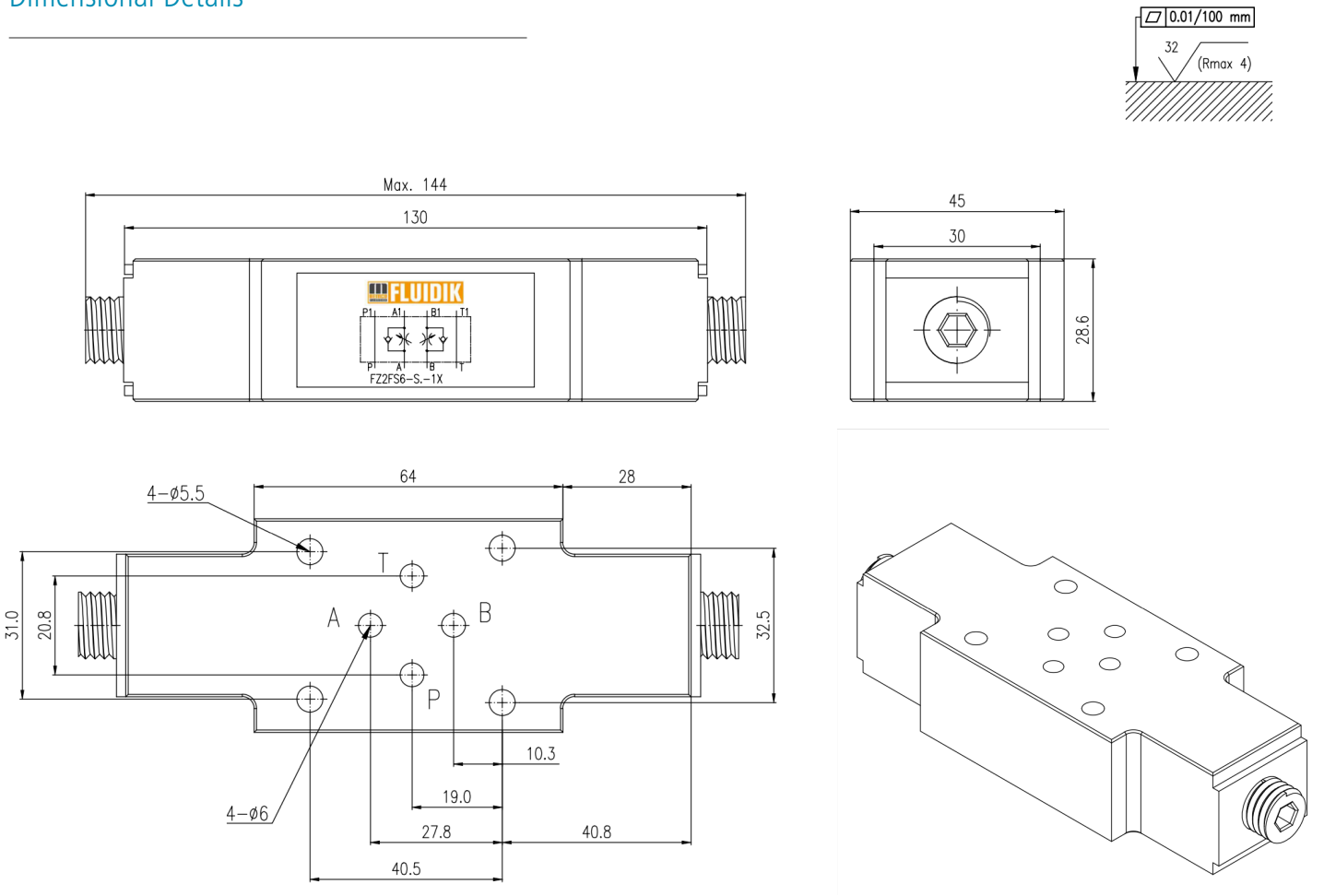
Ordering Information

Basic Code	Sandwich DPOCV	FZ2FS
Size/ NG	NG6/ CETOP 3	6
Control	A&B line	AB
Type*	S1-Meter-in/ S2-Meter-out	No code
Seal Material	NBR	No code
Version		1x



To adjust the oil flow rate, tighten or loosen the adjustment screw in clockwise or counter-clockwise direction. Rotating it clock-wise direction decreases the flow and counterclockwise increases the flow. Use the numbering on the valve adjustment screw as reference and, if required, use lock-nut (not in scope) to lock/ fix the adjusted throttle spool position.

Dimensional Details

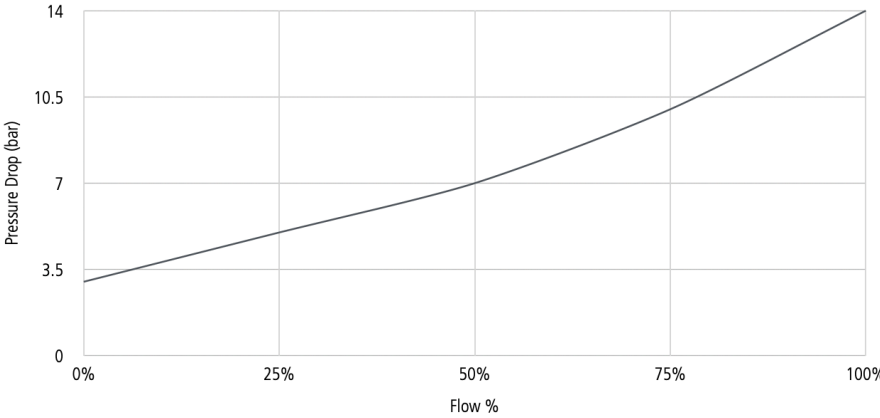


Face O ring 9.0 x 1.75mm x 4nos/ NBR

Performance Chart

Recorded at TOil = 40°C and 68 cSt.

Pressure Drop Charecteristics



+ Measured over check valve with throttle valve closed

All dimensions in mm

Spares List

Seal Kit	SSVF4WE61x
----------	------------