

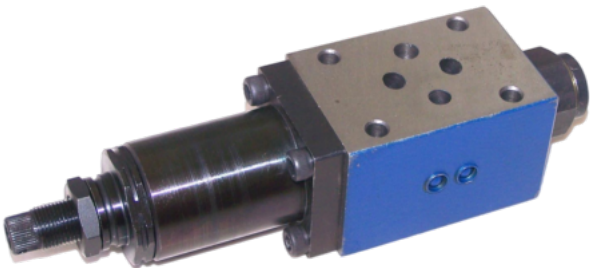
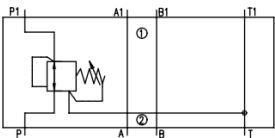
PRESSURE REDUCING VALVE - FZDR6



CETOP 3 | Sandwich Type | 315bar

Specification/ Technical Data

Maximum Inlet Pressure	315 bar
Maximum Flow	30 lpm
Secondary Control Pressure	150bar
Type	Sandwich
Mounting	CETOP 3
Back Pressure	Up to 60 bar
Body Material	SG Iron
Media	Mineral Oil
Oil Temperature Range	+10 to 80°C
Oil Viscosity	ISO VG 46-100
Oil Cleanliness (ISO 4406)	20/18 /15
Orientation	Any
Weight	1.2 Kg



Sandwich pressure reducing valves FZDR6 are commonly used in hydraulics to reduce pressures in one segment or branch of circuit. These are 3-way direct operated valves in sandwich design suitable for vertical stacking with CETOP3 (ISO4401) mounting interfaces. The reduced pressure (secondary pressure) can be monitored through gauge port available as standard on the valve.

Note: A line control available in 75bar version only

Ordering Information

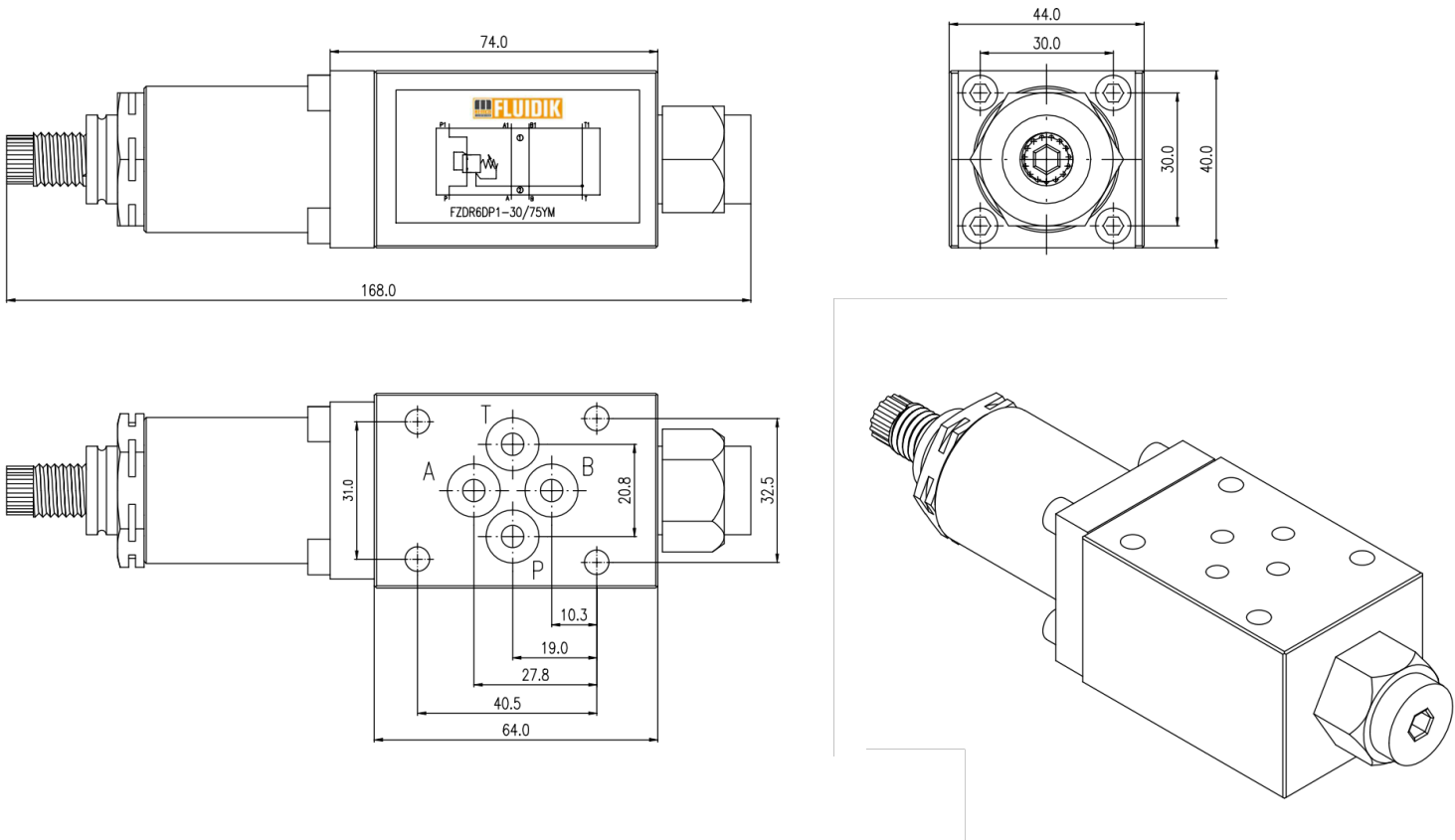
Basic Code	Sandwich Pr. Reducing	FZDR
Size/ NG	NG6/ CETOP 3	6
Type	Direct Operated	D
Control Line	P or A line	P or A*
Adjustment	1 - set screw type	1
Sec. Pressure	75/ 150bar	75
Variant	Internal pilot, w/o check valve	YM
Seal Material	NBR	No code
Version		1x

These valves are direct operated type with pressure reducing in P or A lines as option. The standard valves are internally piloted with external pilot oil return. When the primary pressure is lower than the secondary pressure setting, the oil flows from P to P1 without any intervention of the reducing valve, but the pressure is monitored through internal pilot line. When the primary pressure increases beyond the secondary pressure setting, the secondary pressure is maintained as per setting.

In the event of fluctuations in actuator side and secondary pressure increases, the valve relieves the additional pressure and functions as a reducing cum relieving valve.

The secondary pressure may be increased by adjusting the screw in clock-wise direction and rotation in counter clock-wise direction will reduce the set pressure. The FZDR6 valves are sensitive to flow through the valves and refer the flow Vs minimum adjustment graph when selecting the suitable valve for the application.

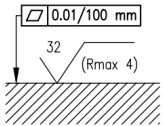
Dimensional Details



All dimensions in mm

Spares List

Seal Kit	SSVF4WE61x
----------	------------



Face O ring 9.0 x 1.75mm x 4nos/ NBR

Performance Chart

Recorded at TOil = 40°C and 68 cSt.

