

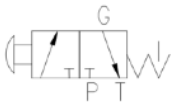
PRESSURE GAUGE ISOLATOR - PGI



Single Station | Panel/ Line Mount | 315 bar

Specification/ Technical Data

|                            |               |
|----------------------------|---------------|
| Max. Operating Pressure    | 315 bar       |
| Internal Leakage           | 50 ml/min     |
| Design                     | Spool Type    |
| Mounting                   | Line or Panel |
| Reading Mechanism          | Push to Read  |
| Locking Mechanism          | Push and Turn |
| Body Material              | Carbon Steel  |
| Media                      | Mineral Oil   |
| Oil Temperature Range      | +10 to 60°C   |
| Oil Viscosity              | ISO VG 46-100 |
| Oil Cleanliness (ISO 4406) | 20/18 /15     |
| Orientation                | Any           |
| Weight (approx.)           | 0.7 Kg        |



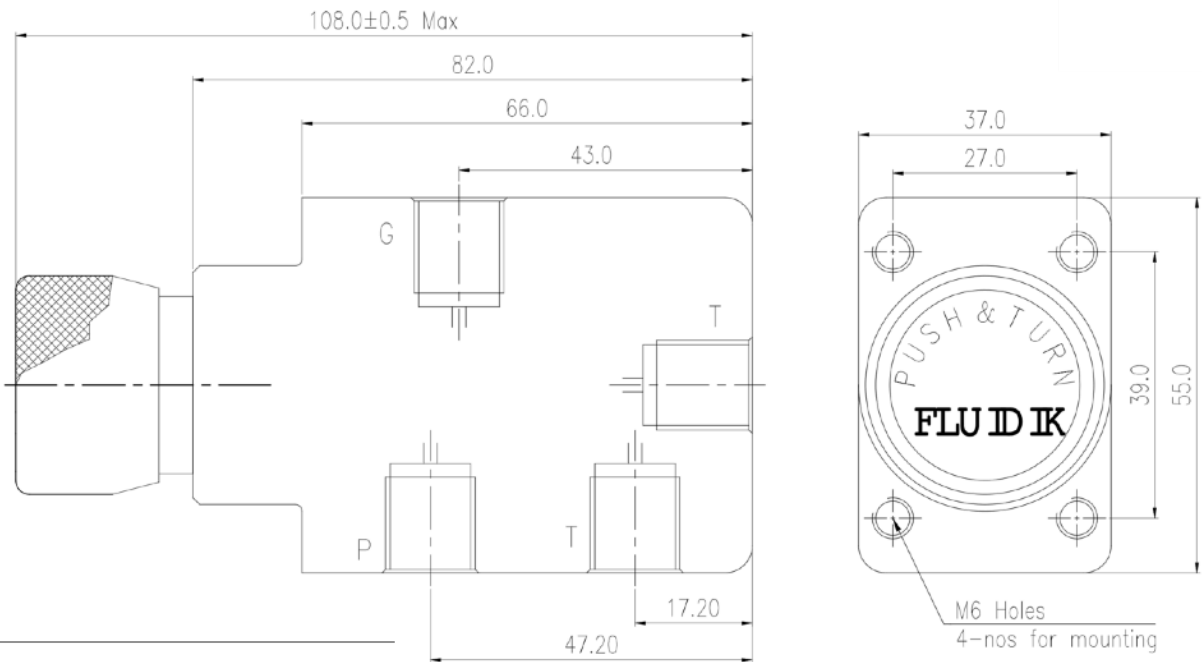
Pressure gauge isolators are safety devices that protect pressure gauges from the damaging effects of pressure spikes and pulsations. They work by isolating the gauge from the system until a measurement is needed, preventing constant exposure to pressurised fluid. By preventing direct contact with the fluid, they also protect the gauge from contamination present in the oil. The isolator's internal spool is activated by a push button, briefly connecting the gauge to the pressure line. This intermittent connection ensures the gauge only registers pressure readings on demand. The measurement may also be kept in the ON position by locking it in the continuous reading position if required.

Ordering Information

|            |                         |     |
|------------|-------------------------|-----|
| Basic Code | Pressure Gauge Isolator | PGI |
| Pr. Rating | 315 bar                 | 315 |
| Mounting   | Line or Panel           | -   |
| Seals      | NBR                     | -   |
| Version    |                         | 2x  |

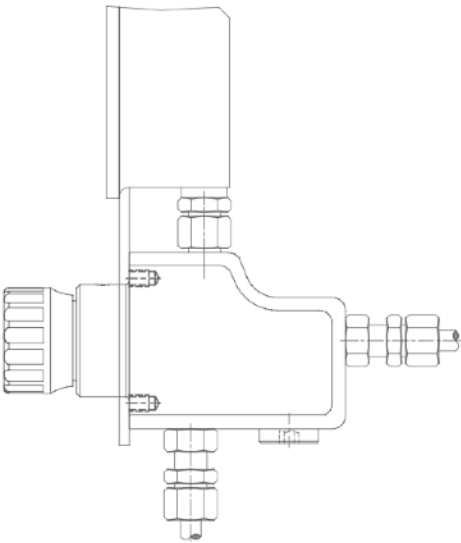
Pressure gauge isolator, model PGI, is designed such that they may be mounted on a gauge panel or line-mounted as may be required. Refer the following pages for installation guidelines. The product is a single-station isolator and is designed for a maximum pressure of 315 bar. There is an in-built tank line that needs to be connected to ensure that the gauge pressure is relieved once the push knob is moved back to home position.

Dimensions

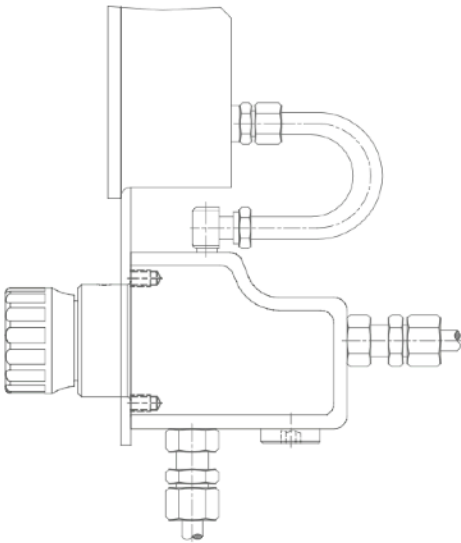


Installation Position

All dimensions in mm  
Ports P, T & G 1/4" BSP



Pressure gauge is mounted directly on PGI. Assembly may be mounted on a gauge panel.



Pressure gauge is connected to PGI through piping/ hose. Assembly may be mounted on a gauge panel.

Spare List

|               |          |
|---------------|----------|
| SealKit - PGI | SSVPGI2x |
|---------------|----------|