

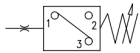
HYDRAULIC PRESSURE SWITCH PSB/PST...



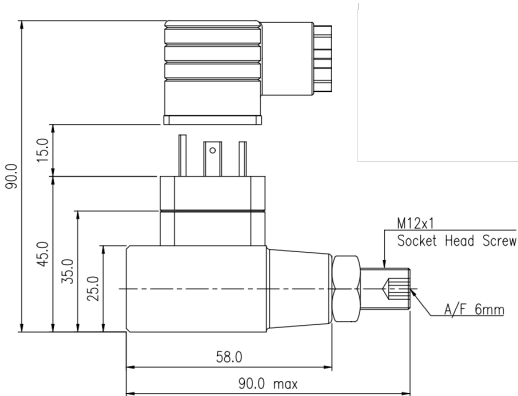
Electro-Mechanical Type | 700bar | Sub-plate/ Threaded

Specification/ Technical Data

Max. Operating Pressure	700 bar
Operating Range	20-700bar
Hysteresis	<15 % of FS
Switching Frequency	20 times/ min
Switching Accuracy	+/- 1% of FS
Contact Resistance	< 10 milli Ω
Body Material	Carbon Steel
Media	Mineral Oil
Oil Temperature Range	+10 to 80°C
Oil Viscosity	ISO VG 46-100
Oil Cleanliness (ISO 4406)	20/18 /15
Orientation	Any
Weight (approx.)	0.35-0.45Kg



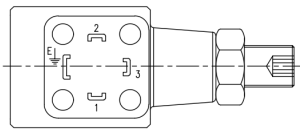
PSB pressure switches are electro-hydraulic type switches rated up to pressures of 700bar. These piston type switches are used to trigger electrical signal when a set pressure is achieved and can be configured as either NO or NC type. Designed for rugged and trouble free operation, these switches are available as sub-plate or line mounted versions (except 700bar). The standard non-LED plug-in connectors as per DIN 43650/ ISO 4400 are provided as standard with the product.



Note: Refer PSR type for 2-bolt mounted version

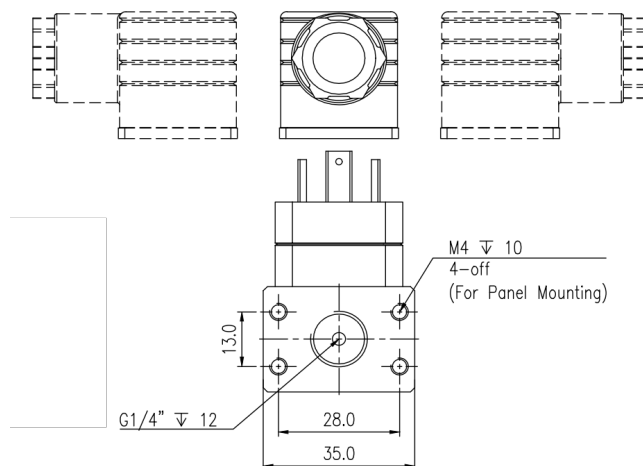
Ordering Information

Basic Code	B - Manifold/ T- Line	PSB/ PST
Max Pressure	75,160, 400, 700bar	75...700
Electrical	250V-5A Potential Free	A
Adjustment	Socket Type	S
Seal Material	Viton	N
Version		2x



Note: Vibrations and pressure spikes will impact life of the pressure switch. Care should be taken to isolate the switch from pressure surges and vibrations. Calibration of the pressure switch for set point and hysteresis is recommended after every 50,000 cycles or once every 12 months, whichever is earlier.

Threaded/ Line Mounted



Technical drawing of the M12x1 Socket Head Screw. The main view shows the screw with dimensions: 90.0 (total length), 15.0 (thread length), 45.0 (unthreaded length), 35.0 (length to the start of the thread), 25.0 (length of the unthreaded section), 78.0 (length of the cylindrical body), and 110.0 max (total length including the hex head). The detail view shows the hex head with dimensions: 2 (width of the hex head), 3 (width of the hex head), and 1 (width of the hex head). The detail view also shows the thread and the unthreaded section.

SealKit - PSB/T	SSVPSBT2x
-----------------	-----------