

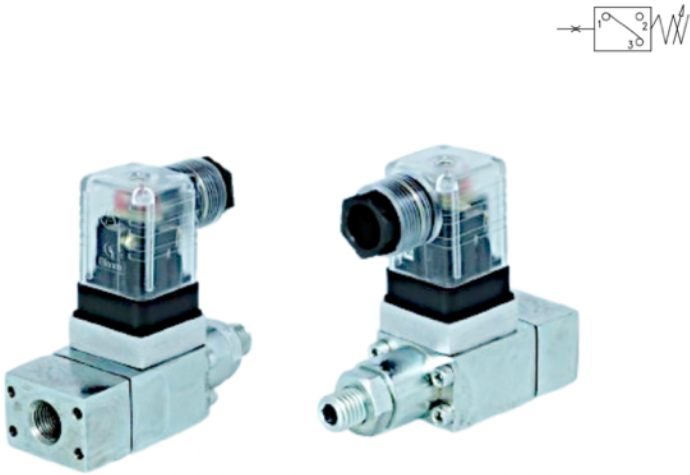
PRESSURE SWITCH PSB/ PST/ PSR



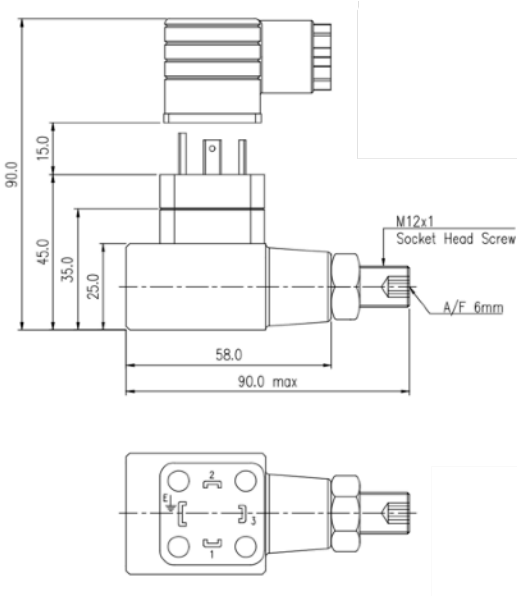
Electro-Mechanical Type | 700bar | Sub-plate/ Threaded

Specification/ Technical Data

Max. Operating Pressure	700 bar
Operating Range	20-700bar
Hysteresis	<15 % of FS
Switching Frequency	20 times/ min
Switching Accuracy	+/- 1% of FS
Contact Resistance	< 10 milli Ω
Body Material	Carbon Steel
Media	Mineral Oil
Oil Temperature Range	+10 to 80°C
Oil Viscosity	ISO VG 46-100
Oil Cleanliness (ISO 4406)	20/18 /15
Orientation	Any
Weight (approx.)	0.35-0.45Kg



PSB pressure switches are electro-hydraulic type switches rated up to pressures of 700bar. These piston type switches are used to trigger electrical signal when a set pressure is achieved and can be configured as either NO or NC type. Designed for rugged and trouble free operation, these switches are available as sub-plate (4-bolt or 2-bolt) or line mounted versions. The standard non-LED plug-in connectors as per DIN 43650/ ISO 4400 are provided as standard with the product.



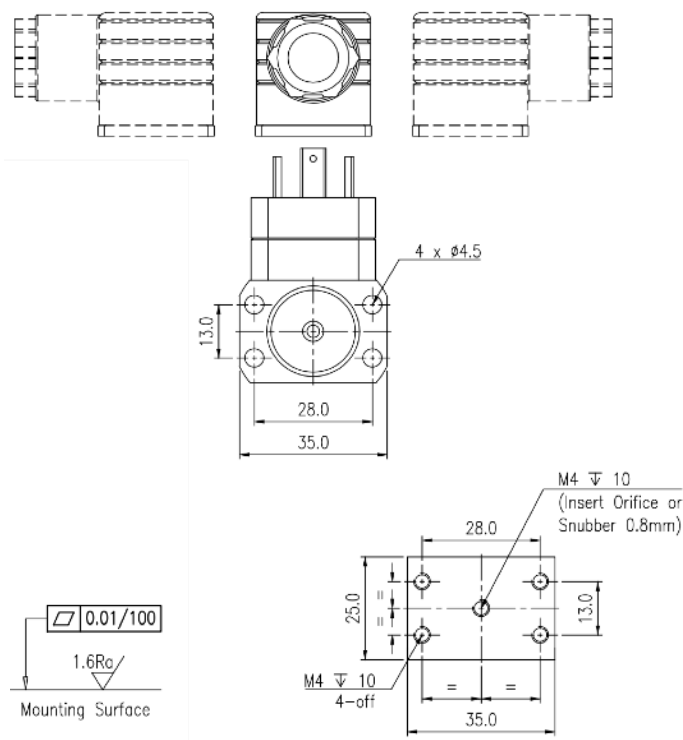
700bar version is available only in PSB version

Ordering Information

Basic Code	4-bolt-B/Line-T/2-bolt-R	PSB/T/R
Max Pressure	75, 160, 400, 700bar	75..700
Electrical	250V-5A Potential Free	A
Adjustment	Socket Type	S
Seal Material	Viton	N
Version		2x

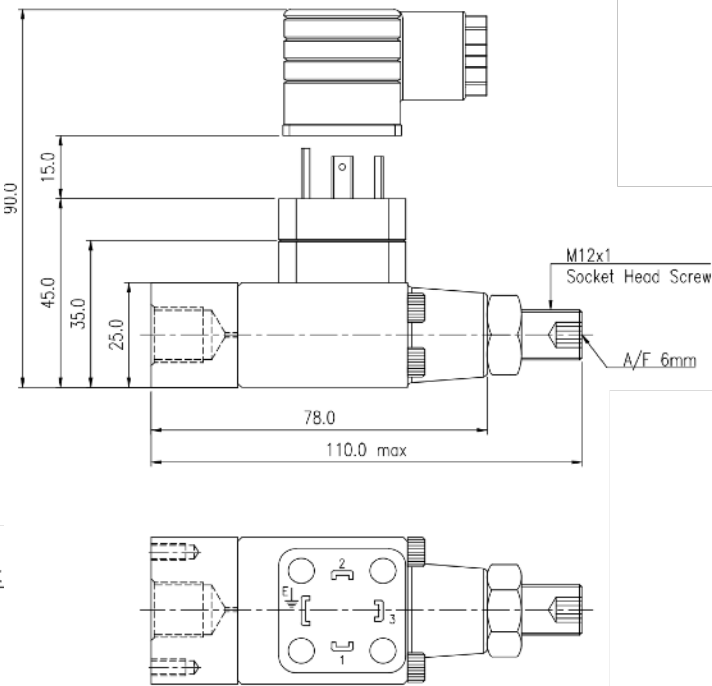
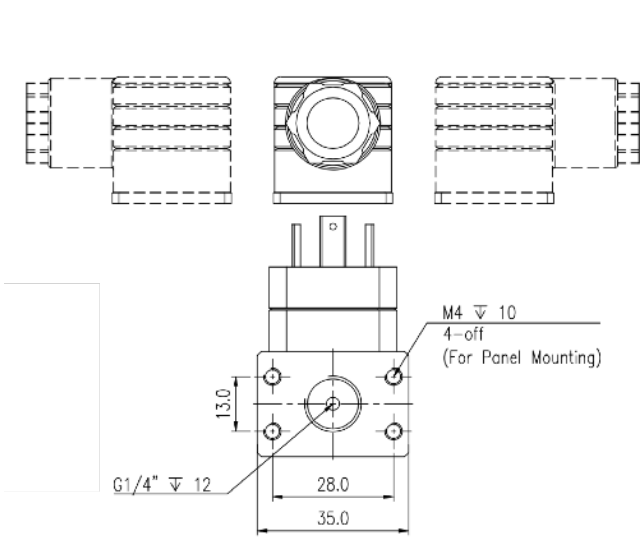
Note: Vibrations and pressure spikes will impact life of the pressure switch. Care should be taken to isolate the switch from pressure surges and vibrations. Calibration of the pressure switch for set point and hysteresis is recommended after every 50,000 cycles or once every 12 months, whichever is earlier.

Sub-Plate Mounted/ 4-Bolt

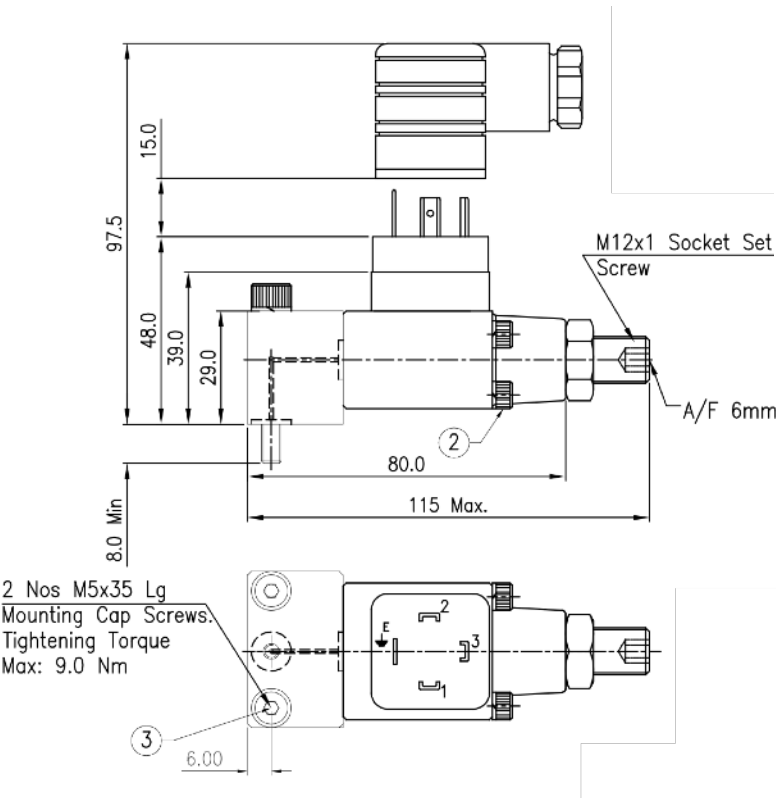


Mounting Bolt: M4 x 50mm x 4nos (not supplied with item)

Threaded/ Line Mounted



Sub-Plate Mounted/ 2-Bolt



Spare List

SealKit - PSB/T	SSVPSBT2x
-----------------	-----------