

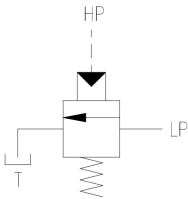
PUMP UNLOADING VALVE - CARTRIDGE



Ball Seat Type | Cartridge | 700 bar

Specification/ Technical Data

Working Pressure	50...130 bar
Max Pilot Pressure	700 bar
Max Flow	10 LPM
Design	Ball Seat Type
Mounting	Screw-in Cartridge
User Adjustable	No (Factory Set)
Body Material	Carbon Steel
Media	Mineral Oil
Oil Temperature Range	+10 to 60°C
Oil Viscosity	ISO VG 46-100
Oil Cleanliness (ISO 4406)	20/18 /15
Orientation	Any
Weight (approx.)	0.32 Kg



Pump unloading valve type PUV06 is crucial in high-low hydraulic circuits to efficiently manage system pressure and flow. Its primary purpose is to bypass the flow from the high-flow pump back to the tank when the system pressure reaches a predetermined set point, thereby "unloading" the pump. This unloading action significantly reduces the power required from the electric motor driving the high-pressure pump, as it no longer has to work against full system pressure and flow.

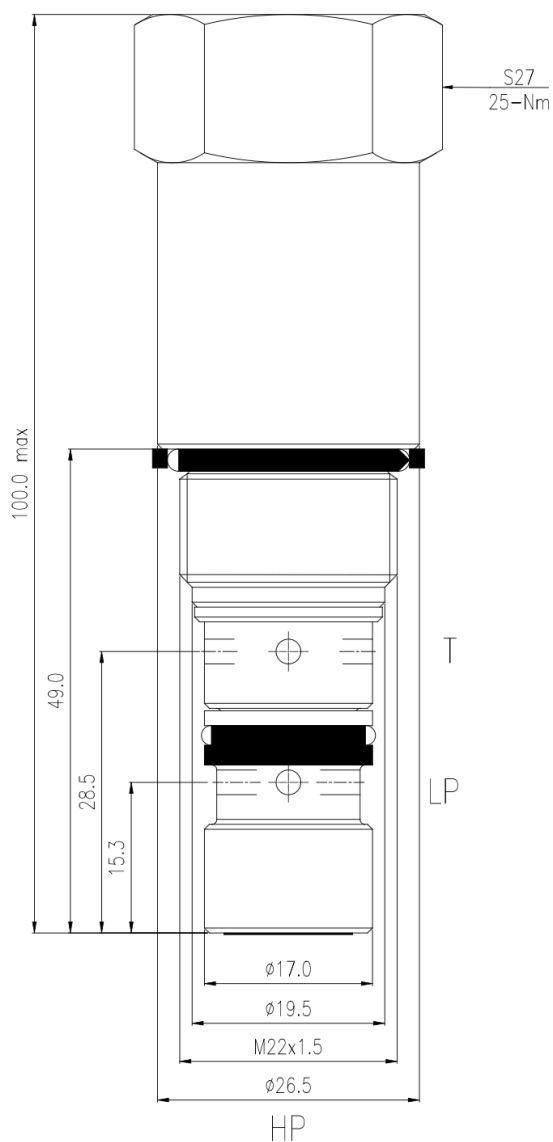
By unloading the low-pressure pump, the motor only needs to power the high-pressure pump during the work cycle, leading to significant energy savings. The use of an unloading valve also helps in reducing heat generation within the hydraulic system, as less energy is wasted through throttling or relief valve operation. This design enhances the overall efficiency and longevity of the hydraulic power unit by minimising continuous stress on the motor and pumps.

Multiple pump unloading valves may be used in a hydraulic circuit to design a 2 or 3 stage systems thereby bringing higher efficiency into circuit design.

Ordering Information

Basic Code	Unloading Valve	PUV
Size	NG 06	06
Unload Pressure	50...130	50...130
Adjustment	Factory Set	-
Version		2x

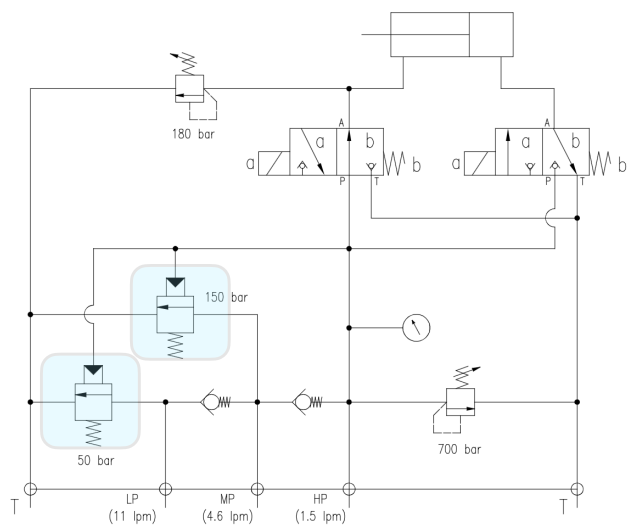
Dimensions



Spare List

SealKit - PCV05	SSVPUV062x
-----------------	------------

Example - 3 Stage Pump Circuit



Cavity Details

