

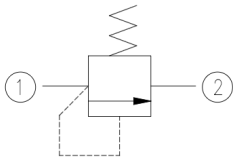
PRESSURE LIMITING/ RELIEF VALVE - CARTRIDGE



Ball Seat Type | Cartridge | 700 bar

Specification/ Technical Data

Max. Operating Pressure	700 bar
Max Flow at ΔP 15bar	10 LPM
Type	Direct Operated
Design	Ball Seat Type
Mounting	Screw-in Cartridge
User Adjustable	Yes
Body Material	Carbon Steel
Media	Mineral Oil
Oil Temperature Range	+10 to 60°C
Oil Viscosity	ISO VG 46-100
Oil Cleanliness (ISO 4406)	20/18 /15
Orientation	Any
Weight (approx.)	0.3 Kg



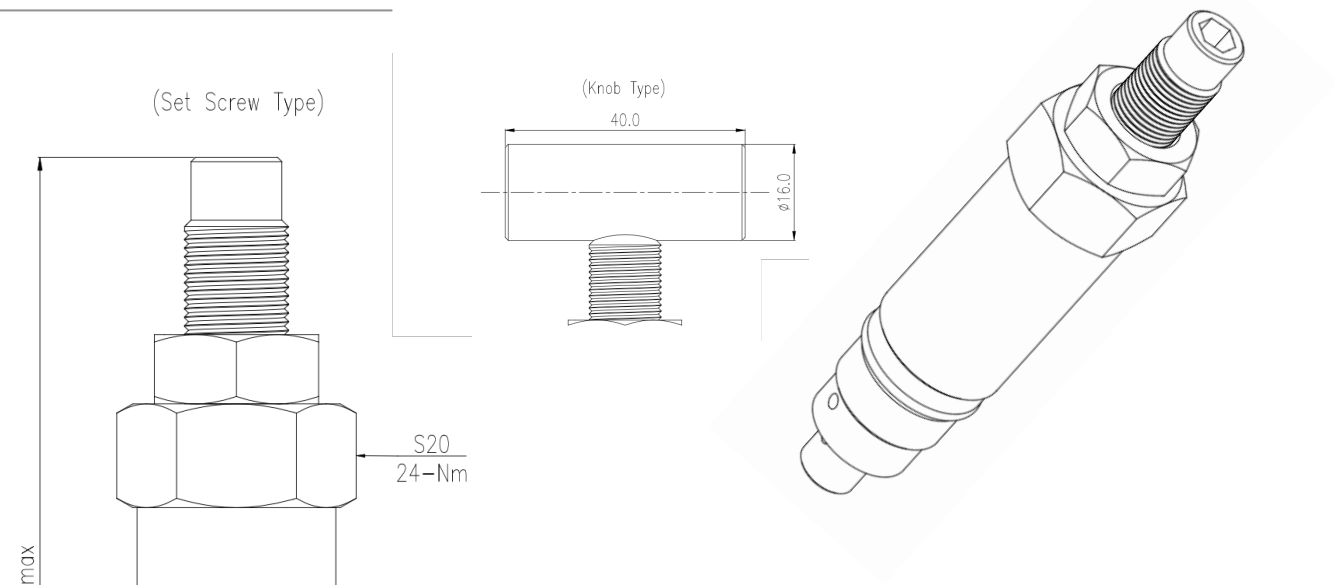
Pressure relief or limiting valve cartridge RVK is a compact, screw-in type valve designed to safeguard hydraulic systems from excessive pressure. It functions as a normally closed valve and remains so until the system pressure reaches a pre-determined maximum setting that may damage the components or elements in the system. Once this set pressure is exceeded, the cartridge's internal mechanism opens, diverting excess hydraulic fluid back to the reservoir (T). This controlled release of pressure prevents damage to pumps, cylinders, and other components by ensuring that the system operates within safe working limits. Essentially, it acts as a critical safety net, preventing system, component and line failure due to over pressurisation.

Ordering Information

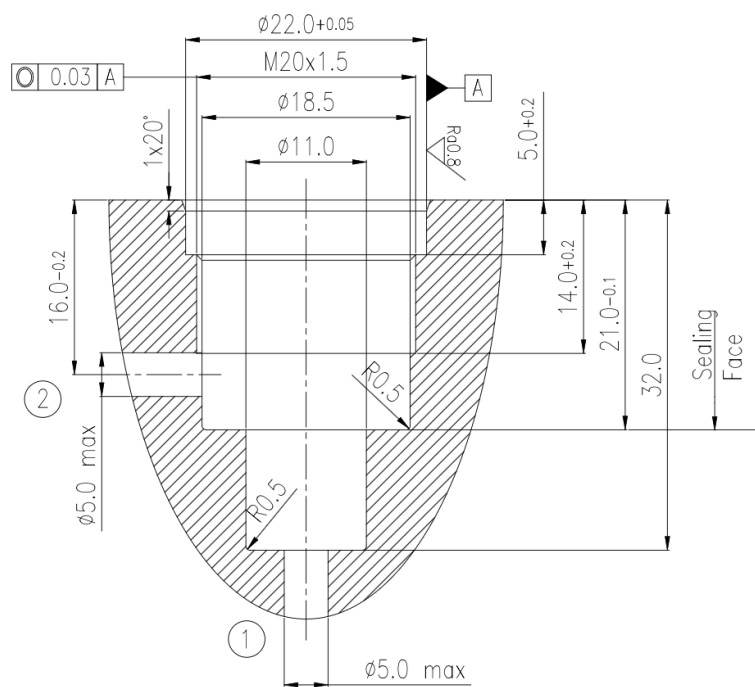
Basic Code	Relief Valve	RV
Type	Cartridge	K
Pr. Rating	210/350/500/700 bar	210...700
Adjustment	S-Set Screw/ H-Knob	S/ H
Version		1x

Model	Rated Flow	Max Pressure	Working Range
RVK 700	5 LPM	700 bar	150...700
RVK 500	5 LPM	500 bar	100...500
RVK 350	10 LPM	350 bar	70...350
RVK 210	10 LPM	210 bar	40...210

Dimensions



Cavity Details



Spare List

SealKit - PCV05	SSVRVK1x
-----------------	----------