

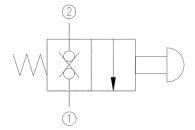
MANUAL POPPET VALVE - DHFM



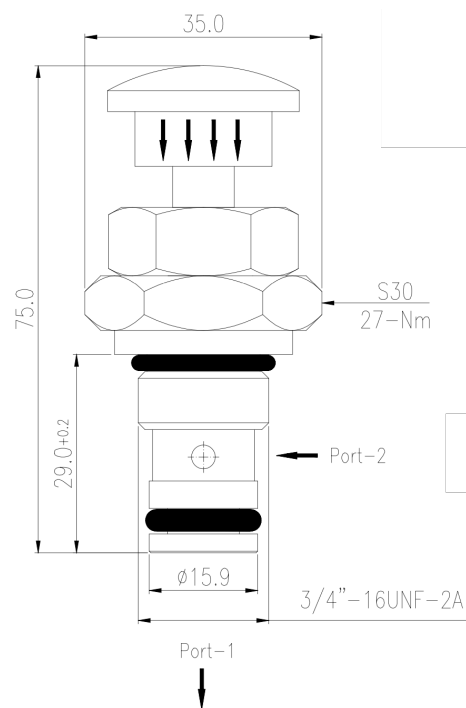
2/2 Type | NC | Screw-in Cartridge

Specification/ Technical Data

Max. Operating Pressure	200 bar
Maximum Flow	16 lpm
Max. Internal Leakage	0.3ml/min
Flow Direction	2 to 1
Actuation	Manual-Push
Push Force (min)	4Kg
Material	Carbon Steel
Media	Mineral Oil
Oil Temperature Range	+10 to 80°C
Oil Viscosity	ISO VG 46-100
Oil Cleanliness (ISO 4406)	20/18 /15
Orientation	Any
Weight (approx.)	>0.2Kg



DHFM 06 valves are manual operated direct acting poppet type directional control valves that may be actuated by a spring return push knob to open the oil path. These are normally closed (NC) valves that are ideal for applications where emergency pressure release functions are required. When actuated, the valve allows oil to flow freely from port 2 to 1 and in closed position, the flow path is blocked in both directions.



Note: Consult factory for stainless steel MOC

Ordering Information

Basic Code		DHFM
Size/ NG	NG6	06
Type	Cartridge	No code
Seal Material	Viton	No code
Version		1x

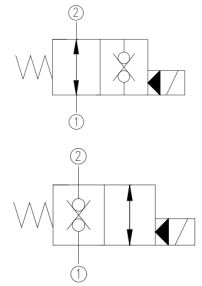
SOLENOID POPPET VALVE - DHF06



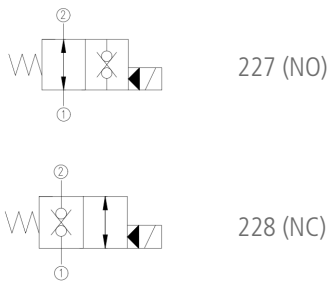
2/2 Type | NO/NC | Screw-in Cartridge

Specification/ Technical Data

Max. Operating Pressure	210 bar
Maximum Flow	16 lpm
Max. Internal Leakage	0.3ml/min
Flow Direction	1-2/ 2-1
Actuation	Solenoid
Min. Voltage (of nominal)	85%
Material	Carbon Steel
Media	Mineral Oil
Oil Temperature Range	+10 to 80°C
Oil Viscosity	ISO VG 46-100
Oil Cleanliness (ISO 4406)	20/18 /15
Orientation	Any
Weight (approx.)	2.0Kg

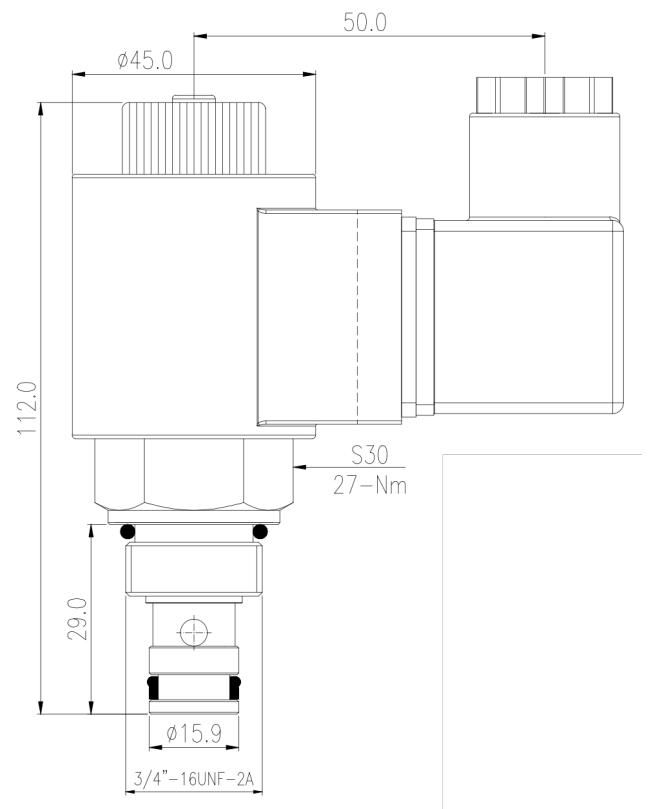


DHF 06 valves are solenoid-operated direct-acting poppet type 2-way and 2-position directional control valves that may be actuated by either DC or AC voltages to open or close the oil path. Once the coils are energised, the poppet opens/ closes and allows/ blocks oil flow from 1 to 2 or from 2 to 1 based on valve selection. The valve is designed for low pressure drop due to its design and is available in either 12/24VDC or 220VAC versions.



Ordering Information

Basic Code		DHF
Size/ NG	NG6	06
Type	227/ 228	227/ 228
Sol. Voltage	G12, 24/ A220	G12..A220
Seal Material	Viton	No code
Version		1x



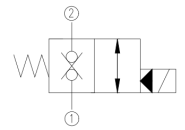
SOLENOID POPPET VALVE - DHF08



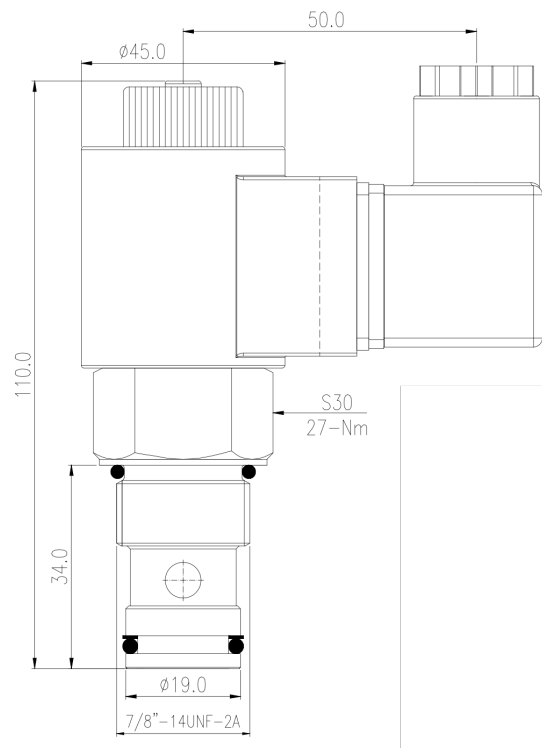
2/2 Type | NC | Screw-in Cartridge

Specification/ Technical Data

Max. Operating Pressure	210 bar
Maximum Flow	36 lpm
Max. Internal Leakage	0.3ml/min
Flow Direction	1-2/ 2-1
Actuation	Solenoid
Min. Voltage (of nominal)	85%
Material	Carbon Steel
Media	Mineral Oil
Oil Temperature Range	+10 to 80°C
Oil Viscosity	ISO VG 46-100
Oil Cleanliness (ISO 4406)	20/18 /15
Orientation	Any
Weight (approx.)	2.0Kg



DHF 08 valves are solenoid-operated direct-acting poppet type 2-way and 2-position directional control valves that may be actuated by either DC or AC voltages to open the oil path. Once the coils are energised, the poppet opens and allows free flow from 1 to 2 or from 2 to 1 based on application requirements. The valve is designed for low pressure drop due to its design and is available in either 12/24VDC or 220VAC versions.



Ordering Information

Basic Code		DHF
Size/ NG	NG8	08
Type	Normally Closed	228
Sol. Voltage	G12, 24/ A220	G12..A220
Seal Material	Viton	No code
Version		1x

